

Alta TRUE BLUE SIRE DIRECTORY

August 2022



AltaZAREK Daughter Group - Italy



Alta CONCEPT PLUS

Est. 2001



4 Reasons to Trust

the Alta CONCEPT PLUS sire fertility evaluation

32%

breedings in the US that are conventional dairy semen used on cows

Other sire fertility evaluations only measure conventional semen used on cows

That means those evaluations are only relevant to 1/3 of the breedings in the US

5

Number of different Alta CONCEPT PLUS evaluations to account for semen type and where you use it

- Conventional dairy semen on cows
- Conventional dairy semen on heifers
- Sexed semen used on cows
- Sexed semen used on heifers
- Beef semen used on dairy cows

2001

The year Alta CONCEPT PLUS was first introduced

That means progressive dairies have trusted Alta CONCEPT PLUS to create more pregnancies in their herds for 21 years – that's seven years longer than SCR

2x

How much more accurate Alta CONCEPT PLUS is at predicting the next pregnancy in your herd as compared to SCR

Because Alta CONCEPT PLUS accounts for semen type and where you use it

Work with your Alta advisor and use high fertility CONCEPT PLUS sires to create more pregnancies in your herd.

altagenetics.com

THE TOP 10's Select the right bulls for you!

£ PLI	
AltaSEVERUS	954
AltaKEVLOW	921
AltaLINGUIST	902
AltaZEOLITE	882
AltaSOLACE	872
AltaMAINSTREAM	863
AltaALANZO	859
AltaPLINKO	857
AltaLUMIFY	853
AltaFIRST TIME	843

TPI	
AltaFIRST TIME	3060
AltaKEVLOW	3036
AltaMAINSTREAM	3035
AltaEXEMPLARY	3034
AltaALANZO	3033
AltaLUMIFY	2992
AltaSEVERUS	2988
AltaSOLACE	2987
AltaPOWERBUCK	2977
AltaZEOLITE	2973

NM\$	
AltaMAINSTREAM	1151
AltaSEVERUS	1110
AltaLINGUIST	1085
AltaFIRST TIME	1077
AltaKEVLOW	1068
AltaLUMIFY	1047
AltaALL ACCESS	1015
AltaPLINKO	1012
AltaZEOLITE	1010
AltaSOLACE	1001

DWP\$	
AltaMAINSTREAM	1316
AltaLINGUIST	1274
AltaWHEELHOUSE	1218
AltaSEVERUS	1188
AltaSOLACE	1184
AltaINSCAPE	1183
AltaFIRST TIME	1165
AltaEXEMPLARY	1164
AltaKEVLOW	1159
AltaZEOLITE	1153

FAT KGS	
AltaLUMIFY	60.0
AltaHAWKIN	59.1
AltaLAJOY	54.7
AltaREGULUS	52.9
AltaLINGUIST	52.7
AltaMAINSTREAM	52.2
AltaFIRST TIME	51.9
AltaZEOLITE	51.2
AltaALANZO	51.2
AltaEXEMPLARY	49.2

FAT PC	
AltaMAINSTREAM	0.38
AltaREGULUS	0.34
AltaEXEMPLARY	0.33
AltaMONTU-PP	0.30
AltaFUTURAMA	0.22
AltaGUSHER	0.26
AltaALLARIC	0.26
AltaLAJOY	0.25
AltaMAGNIFIQUE	0.24
AltaLUMIFY	0.24

PROTEIN KGS	
AltaKEVLOW	43.0
AltaPLINKO	41.7
AltaALL ACCESS	41.4
AltaSEVERUS	38.2
AltaALANZO	37.5
AltaZEOLITE	36.9
AltaMAINSTREAM	36.5
AltaTIKI	36.4
AltaLIENONME	36.4
AltaAVITUS	35.7

PROTEIN PC	
AltaEXEMPLARY	0.15
AltaSULIEN	0.15
AltaFUTURAMA	0.14
AltaFIRST TIME	0.14
AltaREGULUS	0.13
Alta ALL ACCESS	0.12
Alta ALLARIC	0.12
AltaIZZA	0.11
AltaMAGNIFIQUE	0.11
AltaMONTU PP	0.11

MILK	
AltaDREAMDATE	1243
AltaPOWERBUCK	1101
AltaTIKI	1083
AltaREFINE RED	1047
AltaKEVLOW	1045
AltaPLINKO	1030
AltaLIENONME	967
AltaLUMIFY	943
AltaINDIGO	939
AltaSEVERUS	939

SCC %	
AltaZINGLER	-34
AltaSOLACE	-29
AltaPOWERBUCK	-26
AltaAVITUS	-26
AltaTIKI	-25
AltaTOP-RED	-25
AltaCRAZED	-25
AltaBOOYAH	-25
AltaENTRANCED	-25
AltaFUTURAMA	-25

LIFESPAN	
AltaCOSTANZO-RED	195
AltaZINGLER	180
AltaPOWERBUCK	174
AltaTOP-RED	165
AltaSEVERUS	156
AltaBOOYAH	149
AltaGUSHER	143
AltaREFINE RED	140
AltaGAINES	137
AltaMAINSTREAM	134

DAUGHTER FERTILITY	
AltaSEVERUS	15.3
AltaSOLACE	15.0
AltaZINGLER	14.8
AltaENTRANCED	12.1
AltaPOWERBUCK	11.1
Alta ALL ACCESS	11.1
AltaGAINES	10.6
AltaALLARIC	9.7
AltaMAGNIFIQUE	9.6
AltaZEOLITE	9.5

DIRECT CALVING EASE	
AltaCRAZED	1.0
AltaPLINKO	0.9
AltaALLARIC	0.6
AltaALL ACCESS	0.6
AltaLINGUIST	0.5
AltaGULLIVER	0.4
AltaGAINES	0.4
AltaLIENONME	0.4
AltaENTRANCED	0.4
AltaWHEELHOUSE	0.3

TYPE MERIT	
AltaTOP-RED	2.00
AltaBARBAZZA	2.00
AltaSULIEN	1.70
AltaREFINE RED	1.76
AltaPOWERBUCK	1.69
AltaGULLIVER	1.65
AltaEXEMPLARY	1.59
AltaWHEELHOUSE	1.57
AltaLUMIFY	1.52
AltaTRY RED	1.51

MAMMARY	
AltaTOP-RED	2.42
AltaBARBAZZA	2.29
AltaBARBAZZA	2.14
AltaTRY-RED	2.02
AltaZAREK	1.86
AltaBEAMING-RED	1.85
AltaFUTURAMA	1.80
AltaLUMIFY	1.77
AltaPOWERBUCK	1.73
AltaIZZA	1.71

LEGS & FEET	
AltaTOP-RED	1.88
AltaREFINE RED	1.87
AltaSULIEN	1.82
AltaSWAG	1.65
AltaEXEMPLARY	1.52
AltaBOOYAH	1.46
AltaENTRANCED	1.37
AltaANTONIO	1.36
AltaGULLIVER	1.23
AltaPOWERBUCK	1.07



PLI **+859** Rel 63%

AltaALANZO

65003215425521 | HO6978

PEAK ALTAALANZO-ET
 AltaZAZZLE X GUINNESS X JEDI
 HO840M003215425521 | DOB 5/24/2020
 aAa 213 | DMS 126,123 | EFI 11.3 %
 Kappa-Casein: AB Beta-Casein: A2A2
 Haplotype: HH6C | Genetic Codes: TC TD TL TP TR TV TY
 AHDB Dairy & Holstein UK 08/2022 - GENOMIC



CONFORMATION (0 UK Daughters in 0 UK Herds)

	-2	-1	0	1	2		
Stature						+0.84	Tall
Chest Width						-0.99	Narrow
Body Depth						-0.73	Shallow
Angularity						+1.40	Open Rib
Rump Angle						-0.43	High Pins
Thurl Width						+0.53	Wide
R. Legs-S View						-1.28	Straight
Foot Angle						+1.06	Steep
Locomotion						+0.58	Excellent
F. Udder Att.						+1.19	Tight
R. Udder Ht.						+1.12	Very high
Udder Cleft						-0.06	Broken
Udder Depth						+1.33	Above hock
F. Teat Place						+0.10	Close
R. Teat Place						-0.55	Apart
Teat Length						-0.57	Short
Teat Sideview						+0.39	Apart

Alta UK abide by the ADHB & Holstein UK established code of Advertising. Bulls tested free for genetic recessives will not show these codes for formatting reasons. Prices are subject to change. Terms and conditions apply.

CONFORMATION

Type Merit	0.95	Mammary	1.23
Legs & Feet	0.74	Rel	53%

PRODUCTION (0 UK Daughters in 0 UK Herds)

Milk	+905 Kgs	+67% Rel
Protein	+37.5 Kgs	+0.09%
Fat	+51.2 Kgs	+0.16%

HEALTH & MANAGEMENT

Lifespan	92	Ease of Milk	+1.72
Fertility	+6.7	Temperament	+0.2
SCC	-10	Maintenance	-1
MAST	0	Dairy Carcass	0.0
Calf Survival	+1.7	TB Advantage	1.7 40%
Lameness Advantage	+3.0	Gestation Length	0 53%
Digital Dermatitis	+0.3	Feed Advantage	+131 45%
Healthy Cow	+181 56%	Enviro Cow	+4.1 65%

CALVING TRAITS

Direct CE	0.1 +63% Rel	Maternal CE	1.1 +53% Rel
-----------	--------------	-------------	--------------



PLI **+816** Rel 63%

AltaALL ACCESS

65003215425626 | 011HO15679

NEW

PEAK ALTAALL ACCESS-ET
 AltaPLINKO X POSITIVE X MEDLEY
 HO840M003215425626 | DOB 7/1/2020
 aAa 432 | DMS 234,123 | EFI 11.0 %
 Kappa-Casein AB | Beta-Casein A2A2
 Genetic Codes TC TD TL TV TY
 AHDB Dairy & Holstein UK 08/2022 - GENOMIC



CONFORMATION (0 UK Daughters in 0 UK Herds)

	-2	-1	0	1	2		
Stature						+0.38	Tall
Chest Width						+0.48	Wide
Body Depth						-0.39	Shallow
Angularity						+0.34	Course
Rump Angle						+2.70	Low Pins
Thurl Width						+0.03	Wide
R. Legs-S View						-0.58	Straight
Foot Angle						-0.05	Low
Locomotion						+0.06	Excellent
F. Udder Att.						-0.39	Loose
R. Udder Ht.						-0.01	Very low
Udder Cleft						-0.14	Broken
Udder Depth						-0.45	Below hock
F. Teat Place						-0.05	Outside
R. Teat Place						+0.40	Close
Teat Length						-0.96	Short
Teat Sideview						+0.33	Apart

Alta UK abide by the ADHB & Holstein UK established code of Advertising. Bulls tested free for genetic recessives will not show these codes for formatting reasons. Prices are subject to change. Terms and conditions apply. Proud to use independent data powered by AHDB Dairy.

CONFORMATION

Type Merit	+0.26	Mammary	+0.00
Legs & Feet	+0.52	Rel	53%

PRODUCTION (0 UK Daughters in 0 UK Herds)

Milk	+895 Kgs	67% Rel
Protein	+40.1 Kgs	+0.12%
Fat	+46.3 Kgs	+0.11%

HEALTH & MANAGEMENT

Lifespan	98	Ease of Milk	+0.35
Fertility	+9.2	Temperament	+0.3
SCC	-2	Maintenance	5
Mastitis	0	Dairy Carcass	+0.8
Calf Survival	+0.03	TB Advantage	2.4 40%
Lameness Advantage	+2.2	Gestation Length	-3 55%
Digital Dermatitis	+0.1	Feed Advantage	+42 45%
Healthy Cow	+152 56%	Enviro Cow	+3.8 65%

CALVING TRAITS

Direct CE	+0.7 63% Rel	Maternal CE	+1.2 53% Rel
-----------	--------------	-------------	--------------



PLI **+675** Rel 63%

AltaALLARIC

65003215425229 | HO6790

PEAK ALTAALLARIC-ET
 MAESTRO X MARIUS X AltaTOPSHOT
 HO840M003215425229 | DOB 2/14/2020
 aAa 324 | DMS 561,135 | EFI 11.5 %
 Kappa-Casein: BB Beta-Casein: A1A1
 Genetic Codes: TC TD TL TP TR TV TY
 AHDB Dairy & Holstein UK 08/2022 - GENOMIC



CONFORMATION (0 UK Daughters in 0 UK Herds)

	-2	-1	0	1	2		
Stature						-0.49	Short
Chest Width						+1.29	Wide
Body Depth						+0.72	Deep
Angularity						-0.20	Coarse
Rump Angle						-0.08	High Pins
Thurl Width						+0.95	Wide
R. Legs-S View						+0.02	Sickled
Foot Angle						+0.18	Steep
Locomotion						+0.99	Excellent
F. Udder Att.						+0.05	Tight
R. Udder Ht.						+0.19	Very high
Udder Cleft						+0.52	Strong
Udder Depth						-0.30	Below Hock
F. Teat Place						+1.99	Close
R. Teat Place						+1.04	Close
Teat Length						-1.21	Short
Teat Sideview						+0.82	Apart

Alta UK abide by the ADHB & Holstein UK established code of Advertising. Bulls tested free for genetic recessives will not show these codes for formatting reasons. Prices are subject to change. Terms and conditions apply.

CONFORMATION

Type Merit	0.78	Mammary	0.48
Legs & Feet	0.78	Rel	54%

PRODUCTION (0 UK Daughters in 0 UK Herds)

Milk	+414 Kgs	+67% Rel
Protein	+24.0 Kgs	+0.12%
Fat	+39.3 Kgs	+0.26%

HEALTH & MANAGEMENT

Lifespan	79	Ease of Milk	+1.02
Fertility	+9.7	Temperament	+0.4
SCC	-10	Maintenance	4
MAST	-1	Dairy Carcass	0.1
Calf Survival	+1.0	TB Advantage	0.7 43%
Lameness Advantage	+1.5	Gestation Length	-1 48%
Digital Dermatitis	+0.4	Feed Advantage	+37 45%
Healthy Cow	+185 55%	Enviro Cow	+2.9 66%

CALVING TRAITS

Direct CE	0.6 +63% Rel	Maternal CE	1.1 +52% Rel
-----------	--------------	-------------	--------------



PLI **+830** Rel 63%

AltaAVITUS

65003215425267 | HO6789

PEAK ALTAAVITUS-ET
 FASTBALL X MARIUS X AltaROBSON
 HO840M003215425267 | DOB 2/27/2020
 aAa 243 | DMS 561,126 | EFI 11.2 %
 Kappa-Casein: BE Beta-Casein: A1A2
 Genetic Codes: TC TD TL TP TR TV TY
 AHDB Dairy & Holstein UK 08/2022 - GENOMIC



CONFORMATION (0 UK Daughters in 0 UK Herds)

	-2	-1	0	1	2		
Stature						-0.91	Short
Chest Width						+0.90	Wide
Body Depth						-0.57	Shallow
Angularity						-0.22	Coarse
Rump Angle						-0.06	High Pins
Thurl Width						-0.05	Narrow
R. Legs-S View						-0.06	Straight
Foot Angle						+0.29	Steep
Locomotion						+0.87	Excellent
F. Udder Att.						+0.57	Tight
R. Udder Ht.						+0.54	Very high
Udder Cleft						-0.32	Broken
Udder Depth						+0.44	Above hock
F. Teat Place						-1.19	Outside
R. Teat Place						-1.16	Apart
Teat Length						-0.83	Short
Teat Sideview						+0.51	Apart

Alta UK abide by the ADHB & Holstein UK established code of Advertising. Bulls tested free for genetic recessives will not show these codes for formatting reasons. Prices are subject to change. Terms and conditions apply. Proud to use independent data powered by AHDB Dairy.

CONFORMATION

Type Merit	0.88	Mammary	0.77
Legs & Feet	0.80	Rel	53%

PRODUCTION (0 UK Daughters in 0 UK Herds)

Milk	+898 Kgs	+67% Rel
Protein	+35.7 Kgs	+0.07%
Fat	+36.1 Kgs	0.00%

HEALTH & MANAGEMENT

Lifespan	134	Ease of Milk	+0.99
Fertility	+5.5	Temperament	+1.0
SCC	-26	Maintenance	-3
MAST	-2	Dairy Carcass	2.5
Calf Survival	+2.0	TB Advantage	2.7 43%
Lameness Advantage	+2.1	Gestation Length	-3 48%
Digital Dermatitis	+0.2	Feed Advantage	+130 45%
Healthy Cow	+227 56%	Enviro Cow	+3.9 65%

CALVING TRAITS

Direct CE	0.0 +63% Rel	Maternal CE	0.6 +53% Rel
-----------	--------------	-------------	--------------



PLI **+725** Rel 63%

AltaBARBAZZA

NEW

65003224956190 | 011H016074

PEAK ALTABARBAZZA-ET
 AltaHAILED X PURSUIT X AltaROBSON
 HO840M003224956190 | DOB 2/23/2021
 aAa 243 | DMS 561,456 | EFI 10.60 %
 Kappa-Casein AB | Beta-Casein A1A2
 Genetic Codes TC TD TL TV TY
 AHDB Dairy & Holstein UK 08/2022 - GENOMIC



CONFORMATION (0 UK Daughters in 0 UK Herds)

Type Merit	+2.00	Mammary	+2.14
Legs & Feet	+1.01	Rel	53%

PRODUCTION (0 UK Daughters in 0 UK Herds)

Milk	+838 Kgs	67% Rel
Protein	+31.6 Kgs	+0.04%
Fat	+38.0 Kgs	+0.05%

HEALTH & MANAGEMENT

Lifespan	79	Ease of Milk	+0.66
Fertility	+8.0	Temperament	+0.2
SCC	-16	Maintenance	2
Mastitis	-3	Dairy Carcass	+1.3
Calf Survival	+1.8	TB Advantage	3.3 41%
Lameness Advantage	+2.2	Gestation Length	-2 55%
Digital Dermatitis	+0.1	Feed Advantage	+7 45%
Healthy Cow	+233 56%	Enviro Cow	+2.8 65%

CALVING TRAITS

Direct CE	0.0	64% Rel	Maternal CE	1.2	49% Rel
-----------	-----	---------	-------------	-----	---------

CONFORMATION (0 UK Daughters in 0 UK Herds)

	-2	-1	0	1	2	
Stature						+0.18 Tall
Chest Width						+0.52 Wide
Body Depth						-0.43 Shallow
Angularity						+1.02 Course
Rump Angle						-2.33 High Pins
Thurl Width						+1.20 Wide
R. Legs-S View						+0.35 Sickled
Foot Angle						+0.03 Steep
Locomotion						+1.02 Excellent
F. Udder Att.						+1.87 Tight
R. Udder Ht.						+1.95 Very high
Udder Cleft						+1.18 Strong
Udder Depth						+1.23 Above hock
F. Teat Place						+0.27 Close
R. Teat Place						+0.45 Close
Teat Length						+0.89 Long
Teat Sideview						+0.37 Apart

Alta UK abide by the ADHB & Holstein UK established code of Advertising. Bulls tested free for genetic recessives will not show these codes for formatting reasons. Prices are subject to change. Terms and conditions apply.



PLI **+658** Rel 64%

AltaBOOYAH

65003210590092 | HO6750

CO-OP ALTABOYAH-ET
 AltaRNR X IMAX X TROY
 HO840M003210590092 | DOB 10/29/2019
 aAa 423 | DMS 246,126 | EFI 11.7 %
 Kappa-Casein: AB Beta-Casein: A2A2
 Genetic Codes: TC TD TL TP TR TV TY
 AHDB Dairy & Holstein UK 08/2022 - GENOMIC



CONFORMATION (0 UK Daughters in 0 UK Herds)

Type Merit	1.46	Mammary	1.60
Legs & Feet	1.46	Rel	53%

PRODUCTION (0 UK Daughters in 0 UK Herds)

Milk	+509 Kgs	+67% Rel
Protein	+23.5 Kgs	+0.08%
Fat	+33.5 Kgs	+0.15%

HEALTH & MANAGEMENT

Lifespan	149	Ease of Milk	+0.08
Fertility	+7.5	Temperament	+0.3
SCC	-25	Maintenance	18
MAST	-3	Dairy Carcass	1.5
Calf Survival	-0.7	TB Advantage	2.4 45%
Lameness Advantage	+2.6	Gestation Length	-1 94%
Digital Dermatitis	+0.4	Feed Advantage	-23 45%
Healthy Cow	+246 56%	Enviro Cow	+2.8 66%

CALVING TRAITS

Direct CE	-0.9	+71% Rel	Maternal CE	1.1	+53% Rel
-----------	------	----------	-------------	-----	----------

CONFORMATION (0 UK Daughters in 0 UK Herds)

	-2	-1	0	1	2	
Stature						+0.94 Tall
Chest Width						+1.56 Wide
Body Depth						+0.11 Deep
Angularity						+0.06 Open Rib
Rump Angle						+0.15 Low Pins
Thurl Width						+0.64 Wide
R. Legs-S View						-1.26 Straight
Foot Angle						+1.43 Steep
Locomotion						+1.53 Excellent
F. Udder Att.						+1.46 Tight
R. Udder Ht.						+1.05 Very high
Udder Cleft						+0.22 Strong
Udder Depth						+1.89 Above hock
F. Teat Place						+0.05 Close
R. Teat Place						-0.44 Apart
Teat Length						-0.56 Short
Teat Sideview						+0.84 Apart

Alta UK abide by the ADHB & Holstein UK established code of Advertising. Bulls tested free for genetic recessives will not show these codes for formatting reasons. Prices are subject to change. Terms and conditions apply. Proud to use independent data powered by AHDB Dairy.



PLI **+703** Rel 65%

AltaCRAZED

65003205436551 | HO6422

PEAK ALTACRAZED-ET
 AltaCABOT X FRAZZLED X MONTROSS
 HO840M003205436551 | DOB 6/18/2019
 aAa 354 | DMS 345,135 | EFI 11.6 %
 Kappa-Casein: BB Beta-Casein: A2A2
 Haplotype: HH6C | Genetic Codes: TC TD TL TP TR TV TY
 AHDB Dairy & Holstein UK 08/2022 - GENOMIC



CONFORMATION (0 UK Daughters in 0 UK Herds)

	-2	-1	0	1	2		
Stature						-1.51	Short
Chest Width						+0.57	Wide
Body Depth						-0.78	Shallow
Angularity						-1.01	Coarse
Rump Angle						+0.22	Low Pins
Thurl Width						-0.17	Narrow
R. Legs-S View						+0.11	Sickled
Foot Angle						-0.36	Low
Locomotion						+1.02	Excellent
F. Udder Att.						+0.84	Tight
R. Udder Ht.						+0.83	Very high
Udder Cleft						+0.20	Strong
Udder Depth						+0.54	Above hock
F. Teat Place						+0.25	Close
R. Teat Place						-0.02	Apart
Teat Length						-0.52	Short
Teat Sideview						+0.20	Apart

Alta UK abide by the ADHB & Holstein UK established code of Advertising. Bulls tested free for genetic recessives will not show these codes for formatting reasons. Prices are subject to change. Terms and conditions apply.

CONFORMATION

Type Merit	0.86	Mammary	1.30
Legs & Feet	0.74	Rel	55%

PRODUCTION (0 UK Daughters in 0 UK Herds)

Milk	+559 Kgs	+68% Rel
Protein	+24.2 Kgs	+0.07%
Fat	+37.9 Kgs	+0.17%

HEALTH & MANAGEMENT

Lifespan	79	Ease of Milk	-0.11
Fertility	+2.9	Temperament	+0.2
SCC	-25	Maintenance	-9
MAST	-2	Dairy Carcass	2.5
Calf Survival	+1.1	TB Advantage	1.1 46%
Lameness Advantage	+1.9	Gestation Length	-4 99%
Digital Dermatitis		Feed Advantage	+166 45%
Healthy Cow	+181 58%	Enviro Cow	+3.3 66%

CALVING TRAITS

Direct CE	1.1 +75% Rel	Maternal CE	0.6 +53% Rel
-----------	--------------	-------------	--------------



PLI **+681** Rel 63%

AltaDREAMDATE

65003213001209 | HO7115

PEAK ALTADREAMDATE-ET
 AltaTIKI X AltaBUNDLE X JEDI
 HO840M003213001209 | DOB 9/16/2020
 aAa 324 | DMS 456,246 | EFI 11.6 %
 Kappa-Casein: AE Beta-Casein: A1A2
 Genetic Codes: TC TD TL TV TY
 AHDB Dairy & Holstein UK 08/2022 - GENOMIC



CONFORMATION (0 UK Daughters in 0 UK Herds)

	-2	-1	0	1	2		
Stature						+0.41	Tall
Chest Width						+2.04	Wide
Body Depth						+0.98	Deep
Angularity						+0.89	Open Rib
Rump Angle						+0.60	Low Pins
Thurl Width						+1.17	Wide
R. Legs-S View						-0.88	Straight
Foot Angle						+0.17	Steep
Locomotion						+0.01	Excellent
F. Udder Att.						+0.04	Tight
R. Udder Ht.						+0.93	Very high
Udder Cleft						+1.22	Strong
Udder Depth						-0.27	Below Hock
F. Teat Place						-0.35	Outside
R. Teat Place						+1.08	Close
Teat Length						+0.16	Long
Teat Sideview						+1.37	Apart

Alta UK abide by the ADHB & Holstein UK established code of Advertising. Bulls tested free for genetic recessives will not show these codes for formatting reasons. Prices are subject to change. Terms and conditions apply. Proud to use independent data powered by AHDB Dairy.

CONFORMATION

Type Merit	0.93	Mammary	0.90
Legs & Feet	-0.05	Rel	53%

PRODUCTION (0 UK Daughters in 0 UK Herds)

Milk	+1243 Kgs	+67% Rel
Protein	+36.9 Kgs	-0.04%
Fat	+41.6 Kgs	-0.09%

HEALTH & MANAGEMENT

Lifespan	79	Ease of Milk	+0.74
Fertility	+5.8	Temperament	+0.8
SCC	-18	Maintenance	15
MAST	-1	Dairy Carcass	1.4
Calf Survival	+0.6	TB Advantage	2.2 40%
Lameness Advantage	+1.1	Gestation Length	-2 53%
Digital Dermatitis	-0.3	Feed Advantage	+9 45%
Healthy Cow	+147 56%	Enviro Cow	+2.9 65%

CALVING TRAITS

Direct CE	-0.4 +63% Rel	Maternal CE	1.0 +53% Rel
-----------	---------------	-------------	--------------



PLI **+729** Rel 63%

AltaENTRANCED

65003219939710 | HO7095

PEAK ALTAENTRANCED-ET
 FORTNITE X AltaEXPLOSION X AltaROBSON
 HO840M003219939710 | DOB 10/10/2020

aAa 423 | DMS 135,561 | EFI 11.5 %
 Kappa-Casein: AE Beta-Casein: A1A2
 Genetic Codes: TC TD TL TV TY

AHDB Dairy & Holstein UK 08/2022 - GENOMIC



CONFORMATION

Type Merit	1.45	Mammary	1.23
Legs & Feet	1.37	Rel	53%

PRODUCTION (0 UK Daughters in 0 UK Herds)

Milk	+581 Kgs	+67% Rel
Protein	+21.5 Kgs	+0.03%
Fat	+43.6 Kgs	+0.23%

HEALTH & MANAGEMENT

Lifespan	131	Ease of Milk	+0.89
Fertility	+12.1	Temperament	+0.7
SCC	-24	Maintenance	7
MAST	-2	Dairy Carcass	2.3
Calf Survival	+0.9	TB Advantage	2.7 42%
Lameness Advantage	+2.9	Gestation Length	-1 49%
Digital Dermatitis	+0.4	Feed Advantage	+24 45%
Healthy Cow	+286 56%	Enviro Cow	+3.0 66%

CALVING TRAITS

Direct CE	0.4 +64% Rel	Maternal CE	1.4 +53% Rel
-----------	--------------	-------------	--------------

CONFORMATION (0 UK Daughters in 0 UK Herds)

	-2	-1	0	1	2		
Stature						+0.47	Tall
Chest Width						+0.69	Wide
Body Depth						-0.63	Shallow
Angularity						+0.70	Open Rib
Rump Angle						+1.41	Low Pins
Thurl Width						+0.38	Wide
R. Legs-S View						-0.53	Straight
Foot Angle						+0.91	Steep
Locomotion						+1.25	Excellent
F. Udder Att.						+1.46	Tight
R. Udder Ht.						+0.36	Very high
Udder Cleft						-0.06	Broken
Udder Depth						+1.31	Above hock
F. Teat Place						+0.49	Close
R. Teat Place						-0.05	Apart
Teat Length						-1.23	Short
Teat Sideview						+0.05	Apart

Alta UK abide by the ADHB & Holstein UK established code of Advertising. Bulls tested free for genetic recessives will not show these codes for formatting reasons. Prices are subject to change. Terms and conditions apply.



PLI **+689** Rel 63%

AltaEXEMPLARY

NEW

65003228352424

PEAK ALTAEXEMPLARY-ET
 ESPN X PURSUIT X AltaROBSON
 HO840M003228352424 | DOB 3/24/2021

aAa 324 | DMS 345,456 | EFI 11.0 %
 Kappa-Casein: AB Beta-Casein: A2A2

AHDB Dairy & Holstein UK 08/2022 - GENOMIC



CONFORMATION

Type Merit	1.59	Mammary	1.60
Legs & Feet	1.52	Rel	53%

PRODUCTION (0 UK Daughters in 0 UK Herds)

Milk	+505 Kgs	+67% Rel
Protein	+29.3 Kgs	+0.15%
Fat	+49.2 Kgs	+0.33%

HEALTH & MANAGEMENT

Lifespan	88	Ease of Milk	+1.22
Fertility	+3.9	Temperament	+0.1
SCC	-6	Maintenance	21
MAST	0	Dairy Carcass	1.7
Calf Survival	+0.6	TB Advantage	2.1 41%
Lameness Advantage	+1.1	Gestation Length	-2 53%
Digital Dermatitis	+0.1	Feed Advantage	-24 45%
Healthy Cow	+133 56%	Enviro Cow	+3.1 65%

CALVING TRAITS

Direct CE	-1.2 +63% Rel	Maternal CE	1.1 +49% Rel
-----------	---------------	-------------	--------------

CONFORMATION (0 UK Daughters in 0 UK Herds)

	-2	-1	0	1	2		
Stature						+1.56	Tall
Chest Width						+1.48	Wide
Body Depth						+0.69	Deep
Angularity						+1.30	Open Rib
Rump Angle						-0.69	High Pins
Thurl Width						+1.11	Wide
R. Legs-S View						+0.03	Sickled
Foot Angle						+0.74	Steep
Locomotion						+1.51	Excellent
F. Udder Att.						+1.21	Tight
R. Udder Ht.						+1.45	Very high
Udder Cleft						+0.96	Strong
Udder Depth						+0.95	Above hock
F. Teat Place						+0.39	Close
R. Teat Place						+0.60	Close
Teat Length						+0.34	Long
Teat Sideview						+1.15	Apart

Alta UK abide by the ADHB & Holstein UK established code of Advertising. Bulls tested free for genetic recessives will not show these codes for formatting reasons. Prices are subject to change. Terms and conditions apply. Proud to use independent data powered by AHDB Dairy.



PLI **+843** Rel 63%

AltaFIRSTTIME

NEW

65003225323219 | 011HO16088

FB ALTAFIRSTTIME-ET
 AltaZAZZLE X ACURA X ROLAN
 HO840M003225323219 | DOB 7/16/2021
 aAa 213 | DMS 246,234 | EFI 11.3 %
 Kappa-Casein AB | Beta-Casein A1A2
 Haplotype: HH6C | Genetic Codes TC TD TL TV TY
 AHDB Dairy & Holstein UK 08/2022 - GENOMIC



CONFORMATION

Type Merit	+1.45	Mammary	+1.46
Legs & Feet	+1.02	Rel	53%

PRODUCTION (0 UK Daughters in 0 UK Herds)

Milk	+463 Kgs	67% Rel
Protein	+27.1 Kgs	+0.14%
Fat	+51.9 Kgs	+0.38%

HEALTH & MANAGEMENT

Lifespan	131	Ease of Milk	+0.76
Fertility	+7.3	Temperament	+0.4
SCC	-13	Maintenance	-9
Mastitis	-2	Dairy Carcass	+0.3
Calf Survival	+1.6	TB Advantage	1.9 39%
Lameness Advantage	+2.5	Gestation Length	-1 54%
Digital Dermatitis	+0.1	Feed Advantage	+136 45%
Healthy Cow	+224 56%	Enviro Cow	+4.1 65%

CALVING TRAITS

Direct CE	-0.5 63% Rel	Maternal CE	+0.9 53% Rel
-----------	--------------	-------------	--------------

CONFORMATION (0 UK Daughters in 0 UK Herds)

	-2	-1	0	1	2	
Stature						-0.48 Short
Chest Width						-0.51 Narrow
Body Depth						-0.42 Shallow
Angularity						+0.80 Course
Rump Angle						+0.33 Low Pins
Thurl Width						-0.26 Narrow
R. Legs-S View						+0.10 Sickled
Foot Angle						+0.27 Steep
Locomotion						+0.94 Excellent
F. Udder Att.						+1.31 Tight
R. Udder Ht.						+1.39 Very high
Udder Cleft						+0.88 Strong
Udder Depth						+0.44 Above hock
F. Teat Place						+1.11 Close
R. Teat Place						+0.72 Close
Teat Length						+0.38 Long
Teat Sideview						-0.39 Close



PLI **+791** Rel 63%

AltaFUTURAMA

NEW

65003215425949

PEAK ALTAFUTURAMA-ET
 AltaZAZZLE X CASCADE X REASON
 HO840M003215425949 | DOB 11/8/2020
 aAa 324 | DMS 246,456 | EFI 11.4 %
 Kappa-Casein: AB Beta-Casein: A1A2
 Haplotype: HH6C | Genetic Codes: TC TD TL TV TY
 AHDB Dairy & Holstein UK 08/2022 - GENOMIC



CONFORMATION

Type Merit	1.23	Mammary	1.80
Legs & Feet	0.43	Rel	53%

PRODUCTION (0 UK Daughters in 0 UK Herds)

Milk	+542 Kgs	+67% Rel
Protein	+30.0 Kgs	+0.14%
Fat	+47.3 Kgs	+0.29%

HEALTH & MANAGEMENT

Lifespan	82	Ease of Milk	+0.92
Fertility	+7.2	Temperament	
SCC	-24	Maintenance	11
MAST	-3	Dairy Carcass	0.1
Calf Survival	+1.3	TB Advantage	1.5 39%
Lameness Advantage	+1.4	Gestation Length	-1 55%
Digital Dermatitis	-0.2	Feed Advantage	+53 45%
Healthy Cow	+214 56%	Enviro Cow	+3.4 65%

CALVING TRAITS

Direct CE	-0.6 +63% Rel	Maternal CE	1.0 +52% Rel
-----------	---------------	-------------	--------------

CONFORMATION (0 UK Daughters in 0 UK Herds)

	-2	-1	0	1	2	
Stature						+1.21 Tall
Chest Width						+0.37 Wide
Body Depth						+0.61 Deep
Angularity						+1.46 Open Rib
Rump Angle						-0.20 High Pins
Thurl Width						+0.94 Wide
R. Legs-S View						+0.52 Sickled
Foot Angle						+1.02 Steep
Locomotion						0.00 Poor
F. Udder Att.						+2.12 Tight
R. Udder Ht.						+1.60 Very high
Udder Cleft						+0.99 Strong
Udder Depth						+1.29 Above hock
F. Teat Place						+1.84 Close
R. Teat Place						+1.26 Close
Teat Length						-0.39 Short
Teat Sideview						+0.52 Apart

Alta UK abide by the ADHB & Holstein UK established code of Advertising. Bulls tested free for genetic recessives will not show these codes for formatting reasons. Prices are subject to change. Terms and conditions apply. Proud to use independent data powered by AHDB Dairy.



PLI **+796** Rel 63%

AltaGAINES

65003215425484 | HO6886

PEAK ALTAGAINES-ET
 AltaZAZZLE X POSITIVE X MEDLEY
 HO840M003215425484 | DOB 5/19/2020
 aAa 423 | DMS 123,135 | EFI 10.6 %
 Kappa-Casein: BB Beta-Casein: A2A2
 Haplotype: HH6C | Genetic Codes: TC TD TL TP TR TV TY
 AHDB Dairy & Holstein UK 08/2022 - GENOMIC



CONFORMATION (0 UK Daughters in 0 UK Herds)

	-2	-1	0	1	2		
Stature			█			+0.21	Tall
Chest Width						-0.01	Narrow
Body Depth			█			-0.27	Shallow
Angularity				█		+0.67	Open Rib
Rump Angle				█		+0.73	Low Pins
Thurl Width			█			+0.19	Wide
R. Legs-S View			█			+0.51	Sickled
Foot Angle		█				-0.51	Low
Locomotion			█			+0.14	Excellent
F. Udder Att.				█		+1.37	Tight
R. Udder Ht.				█		+1.08	Very high
Udder Cleft			█			+0.14	Strong
Udder Depth				█		+0.83	Above hock
F. Teat Place				█		+1.06	Close
R. Teat Place				█		+0.57	Close
Teat Length		█				-0.88	Short
Teat Sideview			█			+0.34	Apart

Alta UK abide by the ADHB & Holstein UK established code of Advertising. Bulls tested free for genetic recessives will not show these codes for formatting reasons. Prices are subject to change. Terms and conditions apply.

CONFORMATION

Type Merit	0.99	Mammary	1.46
Legs & Feet	0.07	Rel	53%

PRODUCTION (0 UK Daughters in 0 UK Herds)

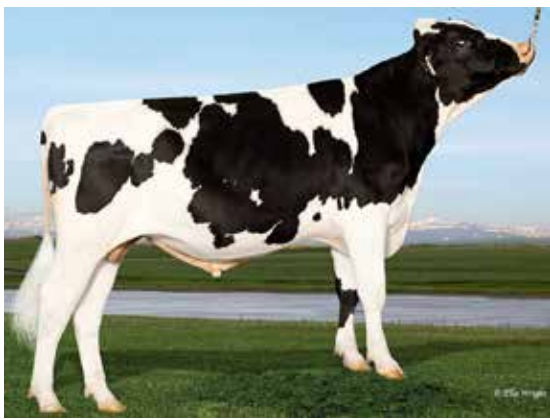
Milk	+780 Kgs	+67% Rel
Protein	+31.2 Kgs	+0.06%
Fat	+42.3 Kgs	+0.12%

HEALTH & MANAGEMENT

Lifespan	137	Ease of Milk	+1.24
Fertility	+10.6	Temperament	+1.0
SCC	-13	Maintenance	0
MAST	-2	Dairy Carcass	0.1
Calf Survival	+0.2	TB Advantage	3.1 40%
Lameness Advantage	+3.2	Gestation Length	-2 55%
Digital Dermatitis	+0.2	Feed Advantage	+88 45%
Healthy Cow	+236 56%	Enviro Cow	+3.7 65%

CALVING TRAITS

Direct CE	0.4 +64% Rel	Maternal CE	1.3 +53% Rel
-----------	--------------	-------------	--------------



PLI **+820** Rel 64%

AltaGULLIVER

65003209641634 | HO6752

PEAK ALTAGULLIVER-ET
 PURSUIT X FABULOUS X AltaTOPSHOT
 HO840M003209641634 | DOB 11/27/2019
 aAa 435 | DMS 234,246 | EFI 11.5 %
 Kappa-Casein: AB Beta-Casein: A1A2
 Genetic Codes: TC TD TL TP TR TV TY
 AHDB Dairy & Holstein UK 08/2022 - GENOMIC



CONFORMATION (0 UK Daughters in 0 UK Herds)

	-2	-1	0	1	2		
Stature			█			+0.30	Tall
Chest Width				█		+0.77	Wide
Body Depth			█			+0.23	Deep
Angularity				█		+1.39	Open Rib
Rump Angle				█		+0.47	Low Pins
Thurl Width				█		+0.84	Wide
R. Legs-S View			█			+0.02	Sickled
Foot Angle				█		+0.65	Steep
Locomotion				█		+1.05	Excellent
F. Udder Att.				█		+0.47	Tight
R. Udder Ht.				█		+1.27	Very high
Udder Cleft				█		+0.61	Strong
Udder Depth				█		-0.06	Below Hock
F. Teat Place				█		+0.07	Close
R. Teat Place				█		-0.29	Apart
Teat Length		█				-0.36	Short
Teat Sideview				█		+1.99	Apart

Alta UK abide by the ADHB & Holstein UK established code of Advertising. Bulls tested free for genetic recessives will not show these codes for formatting reasons. Prices are subject to change. Terms and conditions apply. Proud to use independent data powered by AHDB Dairy.

CONFORMATION

Type Merit	1.65	Mammary	1.18
Legs & Feet	1.23	Rel	55%

PRODUCTION (0 UK Daughters in 0 UK Herds)

Milk	+922 Kgs	+67% Rel
Protein	+34.3 Kgs	+0.04%
Fat	+47.2 Kgs	+0.11%

HEALTH & MANAGEMENT

Lifespan	134	Ease of Milk	+0.16
Fertility	+4.0	Temperament	+0.5
SCC	-22	Maintenance	5
MAST	-2	Dairy Carcass	1.1
Calf Survival	+1.3	TB Advantage	0.5 42%
Lameness Advantage	+1.1	Gestation Length	-1 98%
Digital Dermatitis	+0.2	Feed Advantage	+100 45%
Healthy Cow	+209 56%	Enviro Cow	+3.9 66%

CALVING TRAITS

Direct CE	0.4 +64% Rel	Maternal CE	1.5 +53% Rel
-----------	--------------	-------------	--------------



PLI **+816** Rel 64%

AltaGUSHER

65003201895193 | HO6527

CO-OP ALTAGUSHER-ET
 AltaSOHOT X SPECTRE X MAGNATE
 HO840M003201895193 | DOB 8/31/2019
 aAa 513 | DMS 234,123 | EFI 10.9 %
 Kappa-Casein: BB Beta-Casein: A2A2
 Genetic Codes: TC TD TL TP TR TV TY
 AHDB Dairy & Holstein UK 08/2022 - GENOMIC



CONFORMATION (0 UK Daughters in 0 UK Herds)

	-2	-1	0	1	2		
Stature						-1.62	Short
Chest Width						+0.67	Wide
Body Depth						-0.56	Shallow
Angularity						-0.80	Coarse
Rump Angle						-0.04	High Pins
Thurl Width						+0.04	Wide
R. Legs-S View						-0.42	Straight
Foot Angle						+0.08	Steep
Locomotion						+0.57	Excellent
F. Udder Att.						+0.64	Tight
R. Udder Ht.						-0.18	Very Low
Udder Cleft						+0.81	Strong
Udder Depth						+0.45	Above hock
F. Teat Place						+0.60	Close
R. Teat Place						+1.51	Close
Teat Length						-1.37	Short
Teat Sideview						+0.90	Apart

Alta UK abide by the ADHB & Holstein UK established code of Advertising. Bulls tested free for genetic recessives will not show these codes for formatting reasons. Prices are subject to change. Terms and conditions apply.

CONFORMATION

Type Merit	0.52	Mammary	0.90
Legs & Feet	0.31	Rel	54%

PRODUCTION (0 UK Daughters in 0 UK Herds)

Milk	+614 Kgs	+67% Rel
Protein	+26.1 Kgs	+0.07%
Fat	+47.8 Kgs	+0.26%

HEALTH & MANAGEMENT

Lifespan	143	Ease of Milk	-0.09
Fertility	+5.0	Temperament	+0.5
SCC	-20	Maintenance	-10
MAST	-3	Dairy Carcass	0.8
Calf Survival	+1.4	TB Advantage	2.0 43%
Lameness Advantage	+2.9	Gestation Length	-3 88%
Digital Dermatitis	+0.6	Feed Advantage	+173 45%
Healthy Cow	+212 57%	Enviro Cow	+4.1 66%

CALVING TRAITS

Direct CE	-1.1 +72% Rel	Maternal CE	1.0 +53% Rel
-----------	---------------	-------------	--------------



PLI **+523** Rel 65%

AltaHAILED

65003207410295 | HO6526

MATCREST HAILED-ET
 AltaHOTJOB X BURLEY X MONTROSS
 HO840M003207410295 | DOB 5/2/2019
 aAa 423 | DMS 345,135 | EFI 9.8 %
 Kappa-Casein: AA Beta-Casein: A1A2
 Genetic Codes: TC TD TL TP TR TV TY
 AHDB Dairy & Holstein UK 08/2022 - GENOMIC



CONFORMATION (0 UK Daughters in 0 UK Herds)

	-2	-1	0	1	2		
Stature						+0.63	Tall
Chest Width						+0.99	Wide
Body Depth						-0.05	Shallow
Angularity						+0.68	Open Rib
Rump Angle						-1.26	High Pins
Thurl Width						+1.04	Wide
R. Legs-S View						+0.03	Sickled
Foot Angle						+0.14	Steep
Locomotion						+0.33	Excellent
F. Udder Att.						+1.67	Tight
R. Udder Ht.						+2.24	Very high
Udder Cleft						+1.63	Strong
Udder Depth						+1.19	Above hock
F. Teat Place						+0.15	Close
R. Teat Place						+0.66	Close
Teat Length						-0.07	Short
Teat Sideview						+1.24	Apart

Alta UK abide by the ADHB & Holstein UK established code of Advertising. Bulls tested free for genetic recessives will not show these codes for formatting reasons. Prices are subject to change. Terms and conditions apply. Proud to use independent data powered by AHDB Dairy.

CONFORMATION

Type Merit	1.57	Mammary	2.29
Legs & Feet	0.33	Rel	56%

PRODUCTION (0 UK Daughters in 0 UK Herds)

Milk	+805 Kgs	+68% Rel
Protein	+24.8 Kgs	-0.02%
Fat	+34.7 Kgs	+0.03%

HEALTH & MANAGEMENT

Lifespan	88	Ease of Milk	+1.25
Fertility	+3.9	Temperament	+0.7
SCC	-2	Maintenance	10
MAST	-1	Dairy Carcass	0.9
Calf Survival	+0.8	TB Advantage	2.5 46%
Lameness Advantage	+2.2	Gestation Length	-3 98%
Digital Dermatitis	+0.3	Feed Advantage	-35 45%
Healthy Cow	+145 58%	Enviro Cow	+2.2 66%

CALVING TRAITS

Direct CE	0.3 +77% Rel	Maternal CE	1.0 +53% Rel
-----------	--------------	-------------	--------------



PLI **+549** Rel 65%

Alta**IZZA**

65003200824743 | H06305

PEAK ALTAIZZA-ET
AltaHOTJOB X JEDI X BOMBERO
H0840M003200824743 | DOB 1/20/2019

aAa 324 | DMS 561,126 | EFI 11.2 %
Kappa-Casein: AB Beta-Casein: A1A2
Genetic Codes: TC TD TL TP TR TV TY

AHDB Dairy & Holstein UK 08/2022 - GENOMIC



CONFORMATION (0 UK Daughters in 0 UK Herds)

	-2	-1	0	1	2		
Stature						+0.95	Tall
Chest Width						+1.06	Wide
Body Depth						+0.64	Deep
Angularity						+0.75	Open Rib
Rump Angle						+0.05	Low Pins
Thurl Width						+0.56	Wide
R. Legs-S View						-1.10	Straight
Foot Angle						+0.44	Steep
Locomotion						+0.22	Excellent
F. Udder Att.						+0.98	Tight
R. Udder Ht.						+1.55	Very high
Udder Cleft						+1.13	Strong
Udder Depth						+0.64	Above hock
F. Teat Place						+0.37	Close
R. Teat Place						+0.94	Close
Teat Length						-0.04	Short
Teat Sideview						+1.72	Apart

Alta UK abide by the ADHB & Holstein UK established code of Advertising. Bulls tested free for genetic recessives will not show these codes for formatting reasons. Prices are subject to change. Terms and conditions apply.

CONFORMATION

Type Merit	1.15	Mammary	1.71
Legs & Feet	0.35	Rel	57%

PRODUCTION (0 UK Daughters in 0 UK Herds)

Milk	+612 Kgs	+68% Rel
Protein	+29.6 Kgs	+0.11%
Fat	+30.6 Kgs	+0.07%

HEALTH & MANAGEMENT

Lifespan	92	Ease of Milk	+0.88
Fertility	+3.7	Temperament	+0.9
SCC	-12	Maintenance	14
MAST	-1	Dairy Carcass	1.3
Calf Survival	-2.1	TB Advantage	1.1 44%
Lameness Advantage	+0.8	Gestation Length	-3 99%
Digital Dermatitis	-0.0	Feed Advantage	-61 45%
Healthy Cow	+113 59%	Enviro Cow	+2.4 67%

CALVING TRAITS

Direct CE	0.0	+78% Rel	Maternal CE	1.3	+54% Rel
-----------	-----	----------	-------------	-----	----------



PLI **+921** Rel 63%

Alta**KEVLOW**

65003212150639 | H07217

PEAK ALTAKEVLOW-ET
AltaPLINKO X MARIUS X DUKE
H0840M003212150639 | DOB 6/25/2020

aAa 234 | DMS 123,135 | EFI 11.7 %
Kappa-Casein: BE Beta-Casein: A1A1
Haplotype: HH5C | Genetic Codes: TC TD TL TP TR TV TY

AHDB Dairy & Holstein UK 08/2022 - GENOMIC



CONFORMATION (0 UK Daughters in 0 UK Herds)

	-2	-1	0	1	2		
Stature						+0.33	Tall
Chest Width						-0.05	Narrow
Body Depth						-0.20	Shallow
Angularity						+1.16	Open Rib
Rump Angle						-0.09	High Pins
Thurl Width						+0.93	Wide
R. Legs-S View						-0.01	Straight
Foot Angle						+0.33	Steep
Locomotion						-0.09	Poor
F. Udder Att.						+0.95	Tight
R. Udder Ht.						+0.85	Very high
Udder Cleft						+0.56	Strong
Udder Depth						+0.54	Above hock
F. Teat Place						+0.18	Close
R. Teat Place						+0.37	Close
Teat Length						-0.38	Short
Teat Sideview						+0.92	Apart

Alta UK abide by the ADHB & Holstein UK established code of Advertising. Bulls tested free for genetic recessives will not show these codes for formatting reasons. Prices are subject to change. Terms and conditions apply. Proud to use independent data powered by AHDB Dairy.

CONFORMATION

Type Merit	0.91	Mammary	1.17
Legs & Feet	0.06	Rel	53%

PRODUCTION (0 UK Daughters in 0 UK Herds)

Milk	+1045 Kgs	+67% Rel
Protein	+43.0 Kgs	+0.09%
Fat	+58.4 Kgs	+0.18%

HEALTH & MANAGEMENT

Lifespan	61	Ease of Milk	+0.13
Fertility	+4.0	Temperament	+1.0
SCC	-18	Maintenance	0
MAST	-2	Dairy Carcass	1.1
Calf Survival	+0.5	TB Advantage	1.4 39%
Lameness Advantage	+1.7	Gestation Length	-4 54%
Digital Dermatitis		Feed Advantage	+127 45%
Healthy Cow	+145 56%	Enviro Cow	+4.3 65%

CALVING TRAITS

Direct CE	0.3	+63% Rel	Maternal CE	1.1	+53% Rel
-----------	-----	----------	-------------	-----	----------



PLI **+840** Rel 63%

AltaLAJOY

65003215425433 | HO6947

PEAK ALTALAJoy-ET
 AltaZAZZLE X POSITIVE X JEDI
 HO840M003215425433 | DOB 4/26/2020
 aAa 234 | DMS 135,123 | EFI 11.4 %
 Kappa-Casein: BB Beta-Casein: A1A2
 Haplotype: HH6C | Genetic Codes: TC TD TL TP TR TV TY
 AHDB Dairy & Holstein UK 08/2022 - GENOMIC



CONFORMATION (0 UK Daughters in 0 UK Herds)

	-2	-1	0	1	2		
Stature						-0.44	Short
Chest Width						-0.19	Narrow
Body Depth						-0.06	Shallow
Angularity						+1.00	Open Rib
Rump Angle						-0.49	High Pins
Thurl Width						-0.99	Narrow
R. Legs-S View						-0.30	Straight
Foot Angle						-0.03	Low
Locomotion						+0.12	Excellent
F. Udder Att.						+1.31	Tight
R. Udder Ht.						+0.79	Very high
Udder Cleft						+0.35	Strong
Udder Depth						+0.86	Above hock
F. Teat Place						+0.73	Close
R. Teat Place						+0.22	Close
Teat Length						-1.13	Short
Teat Sideview						+0.54	Apart

Alta UK abide by the ADHB & Holstein UK established code of Advertising. Bulls tested free for genetic recessives will not show these codes for formatting reasons. Prices are subject to change. Terms and conditions apply.

CONFORMATION

Type Merit	1.12	Mammary	1.26
Legs & Feet	0.28	Rel	53%

PRODUCTION (0 UK Daughters in 0 UK Herds)

Milk	+791 Kgs	+67% Rel
Protein	+34.2 Kgs	+0.09%
Fat	+54.7 Kgs	+0.25%

HEALTH & MANAGEMENT

Lifespan	116	Ease of Milk	+1.21
Fertility	+2.8	Temperament	+0.3
SCC	-11	Maintenance	-7
MAST	-1	Dairy Carcass	0.5
Calf Survival	+0.8	TB Advantage	0.8 40%
Lameness Advantage	+2.6	Gestation Length	-1 55%
Digital Dermatitis	+0.2	Feed Advantage	+147 45%
Healthy Cow	+154 56%	Enviro Cow	+4.3 65%

CALVING TRAITS

Direct CE	0.3 +64% Rel	Maternal CE	1.6 +53% Rel
-----------	--------------	-------------	--------------



PLI **+729** Rel 63%

AltaLIENONME

65003215425732 | HO7096

PEAK ALTALIENONME-ET
 AltaTIKI X POSITIVE X JEDI
 HO840M003215425732 | DOB 8/13/2020
 aAa 234 | DMS 234,345 | EFI 11.6 %
 Kappa-Casein: AB Beta-Casein: A1A2
 Genetic Codes: TC TD TL TR TV TY
 AHDB Dairy & Holstein UK 08/2022 - GENOMIC



CONFORMATION (0 UK Daughters in 0 UK Herds)

	-2	-1	0	1	2		
Stature						-0.25	Short
Chest Width						+0.93	Wide
Body Depth						-0.22	Shallow
Angularity						+0.78	Open Rib
Rump Angle						+0.07	Low Pins
Thurl Width						+0.61	Wide
R. Legs-S View						+0.55	Sickled
Foot Angle						-0.60	Low
Locomotion						+0.38	Excellent
F. Udder Att.						+1.28	Tight
R. Udder Ht.						+1.42	Very high
Udder Cleft						+0.05	Strong
Udder Depth						+0.71	Above hock
F. Teat Place						+0.08	Close
R. Teat Place						+0.48	Close
Teat Length						+0.08	Long
Teat Sideview						+0.11	Apart

Alta UK abide by the ADHB & Holstein UK established code of Advertising. Bulls tested free for genetic recessives will not show these codes for formatting reasons. Prices are subject to change. Terms and conditions apply. Proud to use independent data powered by AHDB Dairy.

CONFORMATION

Type Merit	1.35	Mammary	1.57
Legs & Feet	0.14	Rel	53%

PRODUCTION (0 UK Daughters in 0 UK Herds)

Milk	+967 Kgs	+67% Rel
Protein	+36.4 Kgs	+0.05%
Fat	+44.8 Kgs	+0.06%

HEALTH & MANAGEMENT

Lifespan	88	Ease of Milk	+1.43
Fertility	+2.6	Temperament	+0.8
SCC	-11	Maintenance	2
MAST	0	Dairy Carcass	0.9
Calf Survival	+1.1	TB Advantage	3.2 40%
Lameness Advantage	+1.4	Gestation Length	-3 55%
Digital Dermatitis	-0.1	Feed Advantage	+59 45%
Healthy Cow	+129 56%	Enviro Cow	+3.5 65%

CALVING TRAITS

Direct CE	0.4 +63% Rel	Maternal CE	1.5 +53% Rel
-----------	--------------	-------------	--------------



PLI **+902** Rel 63%

AltaLINGUIST

65003215425475 | HO7292

PEAK ALTALINGUIST-ET
 AltaZAZZLE X POSITIVE X JEDI
 HO840M003215425475 | DOB 5/12/2020
 aAa 243 | DMS 135,561 | EFI 10.9 %
 Kappa-Casein: BB Beta-Casein: A1A2
 Haplotype: HH6C | Genetic Codes: TC TD TL TP TR TV TY
 AHDB Dairy & Holstein UK 08/2022 - GENOMIC



CONFORMATION (0 UK Daughters in 0 UK Herds)

	-2	-1	0	1	2		
Stature						-1.15	Short
Chest Width						-1.35	Narrow
Body Depth						-1.42	Shallow
Angularity						+0.66	Open Rib
Rump Angle						+0.62	Low Pins
Thurl Width						-0.87	Narrow
R. Legs-S View						-0.40	Straight
Foot Angle						-0.25	Low
Locomotion						+0.22	Excellent
F. Udder Att.						+0.63	Tight
R. Udder Ht.						+0.48	Very high
Udder Cleft						+0.31	Strong
Udder Depth						+0.15	Above hock
F. Teat Place						+1.14	Close
R. Teat Place						+0.15	Close
Teat Length						-1.48	Short
Teat Sideview						-0.31	Close

Alta UK abide by the ADHB & Holstein UK established code of Advertising. Bulls tested free for genetic recessives will not show these codes for formatting reasons. Prices are subject to change. Terms and conditions apply.

CONFORMATION

Type Merit	0.58	Mammary	0.91
Legs & Feet	0.18	Rel	53%

PRODUCTION (0 UK Daughters in 0 UK Herds)

Milk	+831 Kgs	+67% Rel
Protein	+34.9 Kgs	+0.08%
Fat	+52.7 Kgs	+0.21%

HEALTH & MANAGEMENT

Lifespan	119	Ease of Milk	+1.14
Fertility	+6.9	Temperament	+0.6
SCC	-10	Maintenance	-21
MAST	-1	Dairy Carcass	0.3
Calf Survival	+1.2	TB Advantage	1.8 40%
Lameness Advantage	+2.7	Gestation Length	-1 55%
Digital Dermatitis	+0.2	Feed Advantage	+224 45%
Healthy Cow	+187 56%	Enviro Cow	+4.6 65%

CALVING TRAITS

Direct CE	0.5 +64% Rel	Maternal CE	1.4 +53% Rel
-----------	--------------	-------------	--------------



PLI **+853** Rel 63%

AltaLUMIFY

65003215425429 | HO7009

PEAK ALTALUMIFY-ET
 AltaZAZZLE X POSITIVE X JEDI
 HO840M003215425429 | DOB 4/25/2020
 aAa 234 | DMS 234,123 | EFI 11.5 %
 Kappa-Casein: AB Beta-Casein: A1A2
 Haplotype: HH6C | Genetic Codes: TC TD TL TP TR TV TY
 AHDB Dairy & Holstein UK 08/2022 - GENOMIC



CONFORMATION (0 UK Daughters in 0 UK Herds)

	-2	-1	0	1	2		
Stature						-0.02	Short
Chest Width						-0.66	Narrow
Body Depth						-0.32	Shallow
Angularity						+1.94	Open Rib
Rump Angle						+0.59	Low Pins
Thurl Width						+0.02	Wide
R. Legs-S View						+0.17	Sickled
Foot Angle						+0.28	Steep
Locomotion						-0.15	Poor
F. Udder Att.						+1.42	Tight
R. Udder Ht.						+1.56	Very high
Udder Cleft						+0.71	Strong
Udder Depth						+0.71	Above hock
F. Teat Place						+1.05	Close
R. Teat Place						+0.96	Close
Teat Length						-1.12	Short
Teat Sideview						+0.29	Apart

Alta UK abide by the ADHB & Holstein UK established code of Advertising. Bulls tested free for genetic recessives will not show these codes for formatting reasons. Prices are subject to change. Terms and conditions apply. Proud to use independent data powered by AHDB Dairy.

CONFORMATION

Type Merit	1.52	Mammary	1.77
Legs & Feet	0.05	Rel	53%

PRODUCTION (0 UK Daughters in 0 UK Herds)

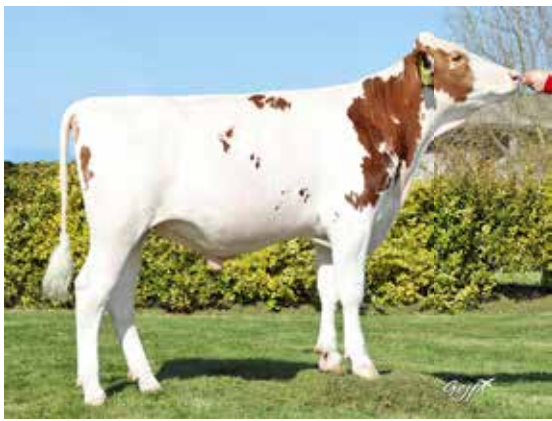
Milk	+943 Kgs	+67% Rel
Protein	+34.6 Kgs	+0.04%
Fat	+60.0 Kgs	+0.24%

HEALTH & MANAGEMENT

Lifespan	95	Ease of Milk	+1.21
Fertility	+2.6	Temperament	+1.2
SCC	-18	Maintenance	-8
MAST	-2	Dairy Carcass	0.9
Calf Survival	+1.1	TB Advantage	2.4 40%
Lameness Advantage	+1.7	Gestation Length	-2 55%
Digital Dermatitis		Feed Advantage	+160 45%
Healthy Cow	+159 56%	Enviro Cow	+4.2 65%

CALVING TRAITS

Direct CE	-0.4 +64% Rel	Maternal CE	1.2 +53% Rel
-----------	---------------	-------------	--------------



PLI **+727** Rel 64%

AltaCOSTANZO-RED

63000597117835 | HO6895

KOEPON ALTACOSTANZO-RED-ET
AltaTOP-RED X SALVATORE RC X RUBICON
HONLDM000597117835 | DOB 3/17/2020

aAa 435 | DMS 135,345 | EFI 11.2 %
Kappa-Casein: EE Beta-Casein: A1A1
Genetic Codes: TC TD TL TV TY
AHDB Dairy & Holstein UK 08/2022 - GENOMIC



CONFORMATION (0 UK Daughters in 0 UK Herds)

	-2	-1	0	1	2		
Stature						+0.35	Tall
Chest Width						+0.51	Wide
Body Depth						-0.88	Shallow
Angularity						-0.77	Coarse
Rump Angle						+1.79	Low Pins
Thurl Width						+0.41	Wide
R. Legs-S View						-0.06	Straight
Foot Angle						+0.82	Steep
Locomotion						+1.61	Excellent
F. Udder Att.						+1.23	Tight
R. Udder Ht.						+1.05	Very high
Udder Cleft						+0.36	Strong
Udder Depth						+1.11	Above hock
F. Teat Place						+0.74	Close
R. Teat Place						+0.46	Close
Teat Length						+0.76	Long
Teat Sideview						+0.08	Apart

Alta UK abide by the ADHB & Holstein UK established code of Advertising. Bulls tested free for genetic recessives will not show these codes for formatting reasons. Prices are subject to change. Terms and conditions apply.

CONFORMATION

Type Merit	1.31	Mammary	1.56
Legs & Feet	1.58	Rel	53%

PRODUCTION (0 UK Daughters in 0 UK Herds)

Milk	+778 Kgs	+67% Rel
Protein	+26.1 Kgs	+0.01%
Fat	+35.2 Kgs	+0.04%

HEALTH & MANAGEMENT

Lifespan	195	Ease of Milk	-1.12
Fertility	+8.2	Temperament	+0.9
SCC	-21	Maintenance	7
MAST	-2	Dairy Carcass	1.4
Calf Survival	+0.7	TB Advantage	2.2 42%
Lameness Advantage	+2.7	Gestation Length	-1 54%
Digital Dermatitis	+0.7	Feed Advantage	+42 45%
Healthy Cow	+275 57%	Enviro Cow	+3.4 66%

CALVING TRAITS

Direct CE	-0.5 +64% Rel	Maternal CE	1.1 +53% Rel
-----------	---------------	-------------	--------------



PLI **+755** Rel 64%

AltaREFINE-RED

63000597117020 | HO7114

KOEPON ALTAREFINE-RED-ET
AltaTOP-RED X SALVATORE RC X RUBICON
HONLDM000597117020 | DOB 6/23/2020

aAa 243 | DMS 126,123 | EFI 11.1 %
Kappa-Casein: EE Beta-Casein: A1A1
Genetic Codes: TC TD TL TP TV TY
AHDB Dairy & Holstein UK 08/2022 - GENOMIC



CONFORMATION (0 UK Daughters in 0 UK Herds)

	-2	-1	0	1	2		
Stature						+0.30	Tall
Chest Width						-0.34	Narrow
Body Depth						-0.73	Shallow
Angularity						+1.02	Open Rib
Rump Angle						-0.67	High Pins
Thurl Width						+0.24	Wide
R. Legs-S View						-0.10	Straight
Foot Angle						+0.23	Steep
Locomotion						+2.33	Excellent
F. Udder Att.						+0.55	Tight
R. Udder Ht.						+1.76	Very high
Udder Cleft						+0.45	Strong
Udder Depth						+0.50	Above hock
F. Teat Place						+0.32	Close
R. Teat Place						+0.21	Close
Teat Length						+0.25	Long
Teat Sideview						+1.08	Apart

Alta UK abide by the ADHB & Holstein UK established code of Advertising. Bulls tested free for genetic recessives will not show these codes for formatting reasons. Prices are subject to change. Terms and conditions apply. Proud to use independent data powered by AHDB Dairy.

CONFORMATION

Type Merit	1.76	Mammary	1.39
Legs & Feet	1.87	Rel	53%

PRODUCTION (0 UK Daughters in 0 UK Herds)

Milk	+1047 Kgs	+67% Rel
Protein	+31.7 Kgs	-0.03%
Fat	+34.3 Kgs	-0.08%

HEALTH & MANAGEMENT

Lifespan	140	Ease of Milk	-0.94
Fertility	+7.0	Temperament	+0.6
SCC	-25	Maintenance	-2
MAST	-2	Dairy Carcass	1.1
Calf Survival	+0.9	TB Advantage	2.0 42%
Lameness Advantage	+2.4	Gestation Length	-1 54%
Digital Dermatitis	+0.7	Feed Advantage	+131 45%
Healthy Cow	+246 57%	Enviro Cow	+3.5 66%

CALVING TRAITS

Direct CE	-0.9 +64% Rel	Maternal CE	0.7 +53% Rel
-----------	---------------	-------------	--------------



PLI **+532** Rel 65%

AltaTOP-RED

63000648499675 | HO6181

KOEPON ALTATOP-RED-ET
 SALVATORE RC X DELTA X CASHCOIN
 HONLDM000648499675 | DOB 4/25/2018
 aAa 243651 | DMS 123,126 | EFI 11.0 %
 Kappa-Casein: AE Beta-Casein: A1A2
 Genetic Codes: TC TD TL TP TV TY
 AHDB Dairy & Holstein UK 08/2022 - GENOMIC



CONFORMATION (0 UK Daughters in 0 UK Herds)

	-2	-1	0	1	2		
Stature						+0.64	Tall
Chest Width						+0.52	Wide
Body Depth						-0.79	Shallow
Angularity						-0.16	Coarse
Rump Angle						-0.03	High Pins
Thurl Width						-0.65	Narrow
R. Legs-S View						-1.03	Straight
Foot Angle						+1.35	Steep
Locomotion						+2.06	Excellent
F. Udder Att.						+2.28	Tight
R. Udder Ht.						+2.20	Very high
Udder Cleft						+1.05	Strong
Udder Depth						+1.88	Above hock
F. Teat Place						+1.02	Close
R. Teat Place						+1.05	Close
Teat Length						-0.53	Short
Teat Sideview						+0.53	Apart

Alta UK abide by the ADHB & Holstein UK established code of Advertising. Bulls tested free for genetic recessives will not show these codes for formatting reasons. Prices are subject to change. Terms and conditions apply.

CONFORMATION

Type Merit	2.00	Mammary	2.42
Legs & Feet	1.88	Rel	56%

PRODUCTION (0 UK Daughters in 0 UK Herds)

Milk	+866 Kgs	+68% Rel
Protein	+21.8 Kgs	-0.07%
Fat	+20.6 Kgs	-0.16%

HEALTH & MANAGEMENT

Lifespan	165	Ease of Milk	-0.76
Fertility	+5.7	Temperament	+0.9
SCC	-25	Maintenance	9
MAST	-2	Dairy Carcass	0.4
Calf Survival	+0.3	TB Advantage	1.6 46%
Lameness Advantage	+2.6	Gestation Length	-2 99%
Digital Dermatitis	+0.7	Feed Advantage	-13 45%
Healthy Cow	+255 63%	Enviro Cow	+2.2 67%

CALVING TRAITS

Direct CE	-0.9 +85% Rel	Maternal CE	0.9 +54% Rel
-----------	---------------	-------------	--------------



PLI **+561** Rel 64%

AltaTRY-RED

65003213815980 | HO7215

TRENT-WAY-JS ALTATRY-RED-ET
 TOMCRUISE X KING ROYAL X SILVER
 HO840M003213815980 | DOB 6/17/2020
 aAa 432 | DMS 234,246 | EFI 11.3 %
 Kappa-Casein: BB Beta-Casein: A1A1
 Genetic Codes: TC TD TL TP TV TY
 AHDB Dairy & Holstein UK 08/2022 - GENOMIC



CONFORMATION (0 UK Daughters in 0 UK Herds)

	-2	-1	0	1	2		
Stature						+1.03	Tall
Chest Width						+1.06	Wide
Body Depth						+1.06	Deep
Angularity						+1.10	Open Rib
Rump Angle						-0.47	High Pins
Thurl Width						+1.05	Wide
R. Legs-S View						-1.39	Straight
Foot Angle						+0.76	Steep
Locomotion						+0.57	Excellent
F. Udder Att.						+1.73	Tight
R. Udder Ht.						+1.92	Very high
Udder Cleft						+1.34	Strong
Udder Depth						+1.02	Above hock
F. Teat Place						+1.21	Close
R. Teat Place						+1.30	Close
Teat Length						-0.94	Short
Teat Sideview						+1.14	Apart

Alta UK abide by the ADHB & Holstein UK established code of Advertising. Bulls tested free for genetic recessives will not show these codes for formatting reasons. Prices are subject to change. Terms and conditions apply. Proud to use independent data powered by AHDB Dairy.

CONFORMATION

Type Merit	1.51	Mammary	2.02
Legs & Feet	0.59	Rel	53%

PRODUCTION (0 UK Daughters in 0 UK Herds)

Milk	+650 Kgs	+67% Rel
Protein	+30.1 Kgs	+0.10%
Fat	+32.9 Kgs	+0.08%

HEALTH & MANAGEMENT

Lifespan	34	Ease of Milk	+1.73
Fertility	+2.0	Temperament	+0.5
SCC	-9	Maintenance	14
MAST	0	Dairy Carcass	0.8
Calf Survival	+0.7	TB Advantage	1.0 44%
Lameness Advantage	+1.5	Gestation Length	-1 49%
Digital Dermatitis	+0.3	Feed Advantage	-11 45%
Healthy Cow	+92 57%	Enviro Cow	+2.4 66%

CALVING TRAITS

Direct CE	-1.0 +62% Rel	Maternal CE	0.4 +53% Rel
-----------	---------------	-------------	--------------



PLI **+718** Rel 63%

AltaMONTU-PP

NEW

65003210987593

TTM-LFD ALTAMONTU-PP
LIMELIGHT-P X KENNEDY X JEDI
HO840M003210987593 | DOB 6/8/2020
aAa 351 | DMS 246,234 | EFI 10.5 %
Kappa-Casein: EE Beta-Casein: A1A1
Genetic Codes: PP TC TD TL TR TV TY
AHDB Dairy & Holstein UK 08/2022 - GENOMIC



CONFORMATION (0 UK Daughters in 0 UK Herds)

	-2	-1	0	1	2		
Stature						-0.39	Short
Chest Width						-0.39	Narrow
Body Depth						-0.27	Shallow
Angularity						-0.12	Coarse
Rump Angle						-0.07	High Pins
Thurl Width						+0.54	Wide
R. Legs-S View						+1.06	Sickled
Foot Angle						-0.85	Low
Locomotion						+0.43	Excellent
F. Udder Att.						+1.30	Tight
R. Udder Ht.						+0.29	Very high
Udder Cleft						+0.02	Strong
Udder Depth						+1.04	Above hock
F. Teat Place						+0.38	Close
R. Teat Place						+0.36	Close
Teat Length						-0.43	Short
Teat Sideview						+0.29	Apart

Alta UK abide by the ADHB & Holstein UK established code of Advertising. Bulls tested free for genetic recessives will not show these codes for formatting reasons. Prices are subject to change. Terms and conditions apply.

CONFORMATION

Type Merit	0.69	Mammary	1.04
Legs & Feet	0.43	Rel	54%

PRODUCTION (0 UK Daughters in 0 UK Herds)

Milk	+535 Kgs	+67% Rel
Protein	+27.4 Kgs	+0.11%
Fat	+47.5 Kgs	+0.30%

HEALTH & MANAGEMENT

Lifespan	31	Ease of Milk	-0.09
Fertility	+2.9	Temperament	+0.7
SCC	-17	Maintenance	-6
MAST	-1	Dairy Carcass	0.1
Calf Survival	+1.6	TB Advantage	0.4 41%
Lameness Advantage	+2.5	Gestation Length	0 48%
Digital Dermatitis		Feed Advantage	+117 45%
Healthy Cow	+133 56%	Enviro Cow	+3.2 66%

CALVING TRAITS

Direct CE	0.2 +63% Rel	Maternal CE	1.0 +52% Rel
-----------	--------------	-------------	--------------



PLI **+662** Rel 63%

AltaWYLEE-PP-RC

65003214292445 | H07216

WINSTAR ALTAWYLEE-PP-ET
MONUMENT-P X WINDFALL X POWERBALL-P
HO840M003214292445 | DOB 4/13/2020
aAa 423 | DMS 345,135 | EFI 9.7 %
Kappa-Casein: AB Beta-Casein: A2A2
Genetic Codes: PO PP RC TC TD TL TV TY
AHDB Dairy & Holstein UK 08/2022 - GENOMIC



CONFORMATION (0 UK Daughters in 0 UK Herds)

	-2	-1	0	1	2		
Stature						-0.91	Short
Chest Width						+0.42	Wide
Body Depth						-0.71	Shallow
Angularity						+0.10	Open Rib
Rump Angle						+0.30	Low Pins
Thurl Width						-0.49	Narrow
R. Legs-S View						+0.17	Sickled
Foot Angle						-0.23	Low
Locomotion						-0.21	Poor
F. Udder Att.						+1.04	Tight
R. Udder Ht.						+0.67	Very high
Udder Cleft						+0.71	Strong
Udder Depth						+0.27	Above hock
F. Teat Place						+0.59	Close
R. Teat Place						+1.21	Close
Teat Length						-1.40	Short
Teat Sideview						+0.76	Apart

Alta UK abide by the ADHB & Holstein UK established code of Advertising. Bulls tested free for genetic recessives will not show these codes for formatting reasons. Prices are subject to change. Terms and conditions apply. Proud to use independent data powered by AHDB Dairy.

CONFORMATION

Type Merit	0.76	Mammary	1.21
Legs & Feet	-0.08	Rel	53%

PRODUCTION (0 UK Daughters in 0 UK Herds)

Milk	+831 Kgs	+67% Rel
Protein	+28.2 Kgs	+0.01%
Fat	+36.7 Kgs	+0.04%

HEALTH & MANAGEMENT

Lifespan	79	Ease of Milk	+0.18
Fertility	+4.6	Temperament	+1.0
SCC	-11	Maintenance	-6
MAST	0	Dairy Carcass	1.0
Calf Survival	+2.8	TB Advantage	2.8 42%
Lameness Advantage	+1.5	Gestation Length	0 53%
Digital Dermatitis	+0.1	Feed Advantage	+142 45%
Healthy Cow	+144 56%	Enviro Cow	+3.2 66%

CALVING TRAITS

Direct CE	-0.5 +63% Rel	Maternal CE	0.7 +50% Rel
-----------	---------------	-------------	--------------



PLI **+754** Rel 64%

AltaMAGNIFIQUE

65003213001110 | HO6776

PEAK ALTAMAGNIFIQUE-ET
 MAESTRO X POSITIVE X MEDLEY
 HO840M003213001110 | DOB 1/20/2020
 aAa 423 | DMS 123,126 | EFI 10.8 %
 Kappa-Casein: AB Beta-Casein: A1A2
 Genetic Codes: TC TD TL TP TR TV TY
 AHDB Dairy & Holstein UK 08/2022 - GENOMIC



CONFORMATION (0 UK Daughters in 0 UK Herds)

	-2	-1	0	1	2		
Stature						+0.33	Tall
Chest Width						+1.91	Wide
Body Depth						+0.98	Deep
Angularity						+0.19	Open Rib
Rump Angle						+2.00	Low Pins
Thurl Width						+1.40	Wide
R. Legs-S View						-0.16	Straight
Foot Angle						+0.52	Steep
Locomotion						+0.32	Excellent
F. Udder Att.						+1.21	Tight
R. Udder Ht.						+0.53	Very high
Udder Cleft						+0.16	Strong
Udder Depth						+0.41	Above hock
F. Teat Place						+1.84	Close
R. Teat Place						+1.69	Close
Teat Length						-1.80	Short
Teat Sideview						+0.21	Apart

Alta UK abide by the ADHB & Holstein UK established code of Advertising. Bulls tested free for genetic recessives will not show these codes for formatting reasons. Prices are subject to change. Terms and conditions apply.

CONFORMATION

Type Merit	1.10	Mammary	1.20
Legs & Feet	0.39	Rel	54%

PRODUCTION (0 UK Daughters in 0 UK Herds)

Milk	+601 Kgs	+67% Rel
Protein	+29.7 Kgs	+0.11%
Fat	+45.4 Kgs	+0.24%

HEALTH & MANAGEMENT

Lifespan	110	Ease of Milk	+1.14
Fertility	+9.6	Temperament	+0.6
SCC	-12	Maintenance	15
MAST	-1	Dairy Carcass	0.9
Calf Survival	+0.1	TB Advantage	2.7 43%
Lameness Advantage	+0.8	Gestation Length	-2 49%
Digital Dermatitis	-0.2	Feed Advantage	+47 45%
Healthy Cow	+183 56%	Enviro Cow	+3.5 66%

CALVING TRAITS

Direct CE	-0.5	+71% Rel	Maternal CE	1.2	+52% Rel
-----------	------	----------	-------------	-----	----------



PLI **+863** Rel 63%

AltaMAINSTREAM

NEW

65003215425626 | 011HO16080

PEAK ALTAMAINSTREAM-ET
 AltaWHEELHOUSE X RIVETING X AltaTOPSHOT
 HO840M003236692372 | DOB 5/27/2021
 aAa 432 | DMS 234,123 | EFI 10.8 %
 Kappa-Casein AB | Beta-Casein A2A2
 Genetic Codes: TC TD TL TV TY
 AHDB Dairy & Holstein UK 08/2022 - GENOMIC



CONFORMATION (0 UK Daughters in 0 UK Herds)

	-2	-1	0	1	2		
Stature						+0.06	Tall
Chest Width						+0.82	Wide
Body Depth						+0.17	Deep
Angularity						+1.47	Course
Rump Angle						+0.51	Low Pins
Thurl Width						+0.65	Wide
R. Legs-S View						+1.28	Sickled
Foot Angle						-0.52	Low
Locomotion						+0.06	Excellent
F. Udder Att.						-0.20	Loose
R. Udder Ht.						+0.78	Very high
Udder Cleft						+0.91	Strong
Udder Depth						-0.54	Below hock
F. Teat Place						+1.27	Close
R. Teat Place						+1.90	Close
Teat Length						-1.17	Short
Teat Sideview						+1.47	Apart

Alta UK abide by the ADHB & Holstein UK established code of Advertising. Bulls tested free for genetic recessives will not show these codes for formatting reasons. Prices are subject to change. Terms and conditions apply. Proud to use independent data powered by AHDB Dairy.

CONFORMATION

Type Merit	+1.31	Mammary	+0.68
Legs & Feet	+0.82	Rel	53%

PRODUCTION (0 UK Daughters in 0 UK Herds)

Milk	+922 Kgs	67% Rel
Protein	+36.5 Kgs	+0.07%
Fat	+52.2 Kgs	+0.17%

HEALTH & MANAGEMENT

Lifespan	134	Ease of Milk	+0.20
Fertility	+4.0	Temperament	+0.0
SCC	-17	Maintenance	+2
Mastitis	-1	Dairy Carcass	+1.5
Calf Survival	+2.2	TB Advantage	2.6 40%
Lameness Advantage	+3.1	Gestation Length	0 54%
Digital Dermatitis	+0.4	Feed Advantage	+114 45%
Healthy Cow	+195 56%	Enviro Cow	+4.2 65%

CALVING TRAITS

Direct CE	-0.6	63% Rel	Maternal CE	+0.7	53% Rel
-----------	------	---------	-------------	------	---------



PLI **+857** Rel 65%

AltaPLINKO

65003200824505 | HO6125

PEAK ALTAPLINKO-ET
 MARIUS X AltaTOPSHOT X YODER
 HO840M003200824505 | DOB 10/17/2018
 aAa 423 | DMS 345,234 | EFI 12.0 %
 Kappa-Casein: AB Beta-Casein: A1A2
 Genetic Codes: TC TD TL TP TR TV TY
 AHDB Dairy & Holstein UK 08/2022 - GENOMIC



CONFORMATION (0 UK Daughters in 0 UK Herds)

	-2	-1	0	1	2		
Stature			█			-0.24	Short
Chest Width		█				-0.79	Narrow
Body Depth		█				-0.81	Shallow
Angularity				█		+0.71	Open Rib
Rump Angle				█		+0.99	Low Pins
Thurl Width				█		-0.02	Narrow
R. Legs-S View				█		+0.34	Sickled
Foot Angle			█			-0.32	Low
Locomotion				█		+0.21	Excellent
F. Udder Att.				█		-0.16	Loose
R. Udder Ht.				█		+0.35	Very high
Udder Cleft				█		+0.14	Strong
Udder Depth			█			-0.51	Below Hock
F. Teat Place		█				-0.87	Outside
R. Teat Place				█		-0.03	Apart
Teat Length				█		+0.73	Long
Teat Sideview				█		+0.72	Apart

Alta UK abide by the ADHB & Holstein UK established code of Advertising. Bulls tested free for genetic recessives will not show these codes for formatting reasons. Prices are subject to change. Terms and conditions apply.

CONFORMATION

Type Merit	0.32	Mammary	0.25
Legs & Feet	0.20	Rel	56%

PRODUCTION (0 UK Daughters in 0 UK Herds)

Milk	+1030 Kgs	+68% Rel
Protein	+41.7 Kgs	+0.08%
Fat	+48.7 Kgs	+0.08%

HEALTH & MANAGEMENT

Lifespan	55	Ease of Milk	+0.35
Fertility	+4.9	Temperament	+0.5
SCC	-14	Maintenance	-9
MAST	-1	Dairy Carcass	1.3
Calf Survival	+0.8	TB Advantage	0.5 43%
Lameness Advantage	+2.3	Gestation Length	-5 99%
Digital Dermatitis	+0.2	Feed Advantage	+151 45%
Healthy Cow	+136 59%	Enviro Cow	+4.1 66%

CALVING TRAITS

Direct CE	0.9 +75% Rel	Maternal CE	1.0 +53% Rel
-----------	--------------	-------------	--------------



PLI **+828** Rel 63%

AltaPOWERBUCK

NEW

65003213001199 | HO7219

PEAK ALTAPOWERBUCK-ET
 AltaTIKI X PURSUIT X MEDLEY
 HO840M003213001199 | DOB 9/12/2020
 aAa 432 | DMS 246,234 | EFI 11.4 %
 Kappa-Casein: AB Beta-Casein: A1A2
 Genetic Codes: TC TD TL TV TY
 AHDB Dairy & Holstein UK 08/2022 - GENOMIC



CONFORMATION (0 UK Daughters in 0 UK Herds)

	-2	-1	0	1	2		
Stature			█			-0.39	Short
Chest Width				█		+1.64	Wide
Body Depth		█				-0.56	Shallow
Angularity				█		-0.17	Coarse
Rump Angle				█		+0.24	Low Pins
Thurl Width				█		+0.74	Wide
R. Legs-S View				█		-0.47	Straight
Foot Angle				█		+0.55	Steep
Locomotion				█		+0.95	Excellent
F. Udder Att.				█		+1.27	Tight
R. Udder Ht.				█		+1.28	Very high
Udder Cleft				█		+0.30	Strong
Udder Depth				█		+0.85	Above hock
F. Teat Place				█		+0.17	Close
R. Teat Place				█		-0.10	Apart
Teat Length				█		+0.23	Long
Teat Sideview				█		+0.62	Apart

Alta UK abide by the ADHB & Holstein UK established code of Advertising. Bulls tested free for genetic recessives will not show these codes for formatting reasons. Prices are subject to change. Terms and conditions apply. Proud to use independent data powered by AHDB Dairy.

CONFORMATION

Type Merit	1.69	Mammary	1.73
Legs & Feet	1.07	Rel	53%

PRODUCTION (0 UK Daughters in 0 UK Herds)

Milk	+1101 Kgs	+67% Rel
Protein	+33.9 Kgs	-0.02%
Fat	+38.3 Kgs	-0.06%

HEALTH & MANAGEMENT

Lifespan	174	Ease of Milk	+0.73
Fertility	+11.1	Temperament	+0.6
SCC	-26	Maintenance	6
MAST	-3	Dairy Carcass	1.9
Calf Survival	+0.8	TB Advantage	1.2 40%
Lameness Advantage	+1.8	Gestation Length	-2 55%
Digital Dermatitis	+0.1	Feed Advantage	+50 45%
Healthy Cow	+302 56%	Enviro Cow	+3.6 65%

CALVING TRAITS

Direct CE	0.2 +64% Rel	Maternal CE	1.4 +53% Rel
-----------	--------------	-------------	--------------



PLI +817 Rel 63%

AltaREGULUS

65003212150609 | HO6888

WINSTAR ALTAREGULUS-ET
 AltaZAZZLE X CRIMSON X JEDI
 HO840M003212150609 | DOB 6/6/2020
 aAa 423 | DMS 345,234 | EFI 11.5 %
 Kappa-Casein: BB Beta-Casein: A2A2
 Genetic Codes: TC TD TL TP TR TV TY
 AHDB Dairy & Holstein UK 08/2022 - GENOMIC



CONFORMATION (0 UK Daughters in 0 UK Herds)

	-2	-1	0	1	2		
Stature						+0.31	Tall
Chest Width						+0.44	Wide
Body Depth						-0.29	Shallow
Angularity						+0.36	Open Rib
Rump Angle						+0.42	Low Pins
Thurl Width						+0.71	Wide
R. Legs-S View						-0.38	Straight
Foot Angle						+0.43	Steep
Locomotion						-0.51	Poor
F. Udder Att.						+1.00	Tight
R. Udder Ht.						+0.39	Very high
Udder Cleft						+0.27	Strong
Udder Depth						+1.11	Above hock
F. Teat Place						+0.82	Close
R. Teat Place						+0.73	Close
Teat Length						+0.07	Long
Teat Sideview						+0.50	Apart

Alta UK abide by the ADHB & Holstein UK established code of Advertising. Bulls tested free for genetic recessives will not show these codes for formatting reasons. Prices are subject to change. Terms and conditions apply.

CONFORMATION

Type Merit	0.53	Mammary	1.18
Legs & Feet	-0.45	Rel	54%

PRODUCTION (0 UK Daughters in 0 UK Herds)

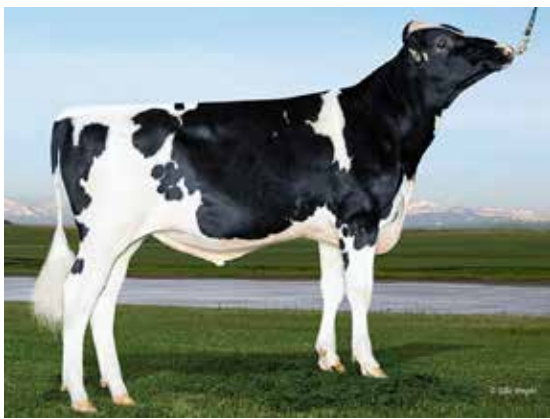
Milk	+572 Kgs	+67% Rel
Protein	+30.2 Kgs	+0.13%
Fat	+52.9 Kgs	+0.34%

HEALTH & MANAGEMENT

Lifespan	107	Ease of Milk	+0.76
Fertility	+6.3	Temperament	+0.4
SCC	-20	Maintenance	5
MAST	-2	Dairy Carcass	1.5
Calf Survival	+1.4	TB Advantage	0.9 41%
Lameness Advantage	+2.5	Gestation Length	-2 55%
Digital Dermatitis	-0.1	Feed Advantage	+68 45%
Healthy Cow	+192 57%	Enviro Cow	+3.8 66%

CALVING TRAITS

Direct CE	-0.6 +64% Rel	Maternal CE	1.5 +53% Rel
-----------	---------------	-------------	--------------



ONLY SEXED AVAILABLE

PLI +954 Rel 63%

AltaSEVERUS

65003224956127 | HO7221

PEAK ALTASEVERUS-ET
 AltaPLINKO X CRIMSON X DUKE
 HO840M003224956127 | DOB 2/8/2021
 aAa 324 | DMS 345,456 | EFI 11.0 %
 Kappa-Casein: AB Beta-Casein: A2A2
 Genetic Codes: TC TD TL TV TY
 AHDB Dairy & Holstein UK 08/2022 - GENOMIC



CONFORMATION (0 UK Daughters in 0 UK Herds)

	-2	-1	0	1	2		
Stature						-0.09	Short
Chest Width						+0.03	Wide
Body Depth						-0.46	Shallow
Angularity						+0.35	Open Rib
Rump Angle						+2.11	Low Pins
Thurl Width						-0.16	Narrow
R. Legs-S View						+0.27	Sickled
Foot Angle						+0.53	Steep
Locomotion						-0.10	Poor
F. Udder Att.						-0.21	Loose
R. Udder Ht.						-0.98	Very Low
Udder Cleft						-0.23	Broken
Udder Depth						-0.16	Below Hock
F. Teat Place						-0.33	Outside
R. Teat Place						+0.16	Close
Teat Length						+0.19	Long
Teat Sideview						+0.02	Apart

Alta UK abide by the ADHB & Holstein UK established code of Advertising. Bulls tested free for genetic recessives will not show these codes for formatting reasons. Prices are subject to change. Terms and conditions apply. Proud to use independent data powered by AHDB Dairy.

CONFORMATION

Type Merit		Mammary	-0.08
Legs & Feet	-0.14	Rel	53%

PRODUCTION (0 UK Daughters in 0 UK Herds)

Milk	+939 Kgs	+67% Rel
Protein	+38.2 Kgs	+0.08%
Fat	+46.6 Kgs	+0.10%

HEALTH & MANAGEMENT

Lifespan	156	Ease of Milk	-0.46
Fertility	+15.3	Temperament	+0.5
SCC	-23	Maintenance	-2
MAST	-2	Dairy Carcass	1.3
Calf Survival	+0.4	TB Advantage	2.3 41%
Lameness Advantage	+2.1	Gestation Length	-3 55%
Digital Dermatitis		Feed Advantage	+150 45%
Healthy Cow	+272 56%	Enviro Cow	+4.5 66%

CALVING TRAITS

Direct CE	0.3 +63% Rel	Maternal CE	1.5 +53% Rel
-----------	--------------	-------------	--------------



PLI **+872** Rel 63%

AltaSOLACE

NEW

65003224956159

PEAK ALTASOLACE-ET
 AltaPLINKO X CRIMSON X DUKE
 HO840M003224956159 | DOB 2/13/2021
 aAa 423 | DMS 345,234 | EFI 11.6 %
 Kappa-Casein: AB Beta-Casein: A1A1
 Genetic Codes: TC TD TL TV TY
 AHDB Dairy & Holstein UK 08/2022 - GENOMIC



CONFORMATION (0 UK Daughters in 0 UK Herds)

	-2	-1	0	1	2		
Stature						+0.44	Tall
Chest Width						+1.10	Wide
Body Depth						-0.48	Shallow
Angularity						-0.58	Coarse
Rump Angle						+1.80	Low Pins
Thurl Width						+0.24	Wide
R. Legs-S View						-1.15	Straight
Foot Angle						+0.44	Steep
Locomotion						-0.06	Poor
F. Udder Att.						+1.07	Tight
R. Udder Ht.						+0.13	Very high
Udder Cleft						+1.02	Strong
Udder Depth						+1.22	Above hock
F. Teat Place						+0.42	Close
R. Teat Place						+1.52	Close
Teat Length						-0.30	Short
Teat Sideview						+0.48	Apart

Alta UK abide by the ADHB or Holstein UK established code of Advertising. Bulls tested free for genetic recessives will not show these codes for formatting reasons. Prices are subject to change. Terms and conditions apply.

CONFORMATION

Type Merit	0.49	Mammary	1.32
Legs & Feet	-0.22	Rel	53%

PRODUCTION (0 UK Daughters in 0 UK Herds)

Milk	+720 Kgs	+67% Rel
Protein	+32.2 Kgs	+0.10%
Fat	+43.3 Kgs	+0.16%

HEALTH & MANAGEMENT

Lifespan	131	Ease of Milk	-0.59
Fertility	+15.0	Temperament	+0.3
SCC	-29	Maintenance	12
MAST	-3	Dairy Carcass	1.9
Calf Survival	+1.4	TB Advantage	0.3 41%
Lameness Advantage	+1.8	Gestation Length	-2 55%
Digital Dermatitis	-0.1	Feed Advantage	+26 45%
Healthy Cow	+301 56%	Enviro Cow	+3.5 66%

CALVING TRAITS

Direct CE	0.2 +63% Rel	Maternal CE	1.2 +53% Rel
-----------	--------------	-------------	--------------



PLI **+746** Rel 64%

AltaSULIEN

NEW

65003215425626 | 011H015430

PEAK ALTASULIEN-ET
 PURSUIT X AltaROBSON X DENVER
 HO840M003209641528 | DOB 10/26/2019
 aAa 243 | DMS 234,345 | EFI 10.7 %
 Kappa-Casein AB | Beta-Casein A1A2
 Genetic Codes TC TD TL TP TR TV TY
 AHDB Dairy & Holstein UK 08/2022 - GENOMIC



CONFORMATION (0 UK Daughters in 0 UK Herds)

	-2	-1	0	1	2		
Stature						+0.53	Tall
Chest Width						+1.57	Wide
Body Depth						+1.12	Deep
Angularity						+0.90	Course
Rump Angle						+0.30	Low Pins
Thurl Width						+1.32	Wide
R. Legs-S View						+0.27	Sickled
Foot Angle						+0.54	Steep
Locomotion						+1.75	Excellent
F. Udder Att.						+0.62	Tight
R. Udder Ht.						+0.57	Very high
Udder Cleft						-0.12	Broken
Udder Depth						+0.22	Above hock
F. Teat Place						+0.53	Close
R. Teat Place						-0.58	Apart
Teat Length						+0.57	Long
Teat Sideview						+0.78	Apart

Alta UK abide by the ADHB or Holstein UK established code of Advertising. Bulls tested free for genetic recessives will not show these codes for formatting reasons. Prices are subject to change. Terms and conditions apply. Proud to use independent data powered by AHDB Dairy.

CONFORMATION

Type Merit	+1.70	Mammary	+1.01
Legs & Feet	+1.82	Rel	55%

PRODUCTION (0 UK Daughters in 0 UK Herds)

Milk	+480 Kgs	67% Rel
Protein	+28.6 Kgs	+0.15%
Fat	+38.2 Kgs	+0.22%

HEALTH & MANAGEMENT

Lifespan	119	Ease of Milk	+0.93
Fertility	+5.8	Temperament	+0.6
SCC	-18	Maintenance	13
Mastitis	-3	Dairy Carcass	+0.4
Calf Survival	+0.5	TB Advantage	2.9 43%
Lameness Advantage	+1.5	Gestation Length	-2 55%
Digital Dermatitis	+0.1	Feed Advantage	+43 45%
Healthy Cow	+212 57%	Enviro Cow	+3.4 66%

CALVING TRAITS

Direct CE	-0.2 72% Rel	Maternal CE	+0.7 53% Rel
-----------	--------------	-------------	--------------



PLI **+651** Rel 65%

AltaTIKI

65003200824142 | HO6291

PEAK ALTATIKI-ET

MILKTIME X AltaROBSON X JOSUPER

HO840M003200824142 | DOB 11/12/2018

aAa 243 | DMS 234,345 | EFI 11.1 %

Kappa-Casein: AB Beta-Casein: A2A2

Genetic Codes: TC TD TL TP TR TV TY

AHDB Dairy & Holstein UK 08/2022 - GENOMIC



CONFORMATION (0 UK Daughters in 0 UK Herds)

	-2	-1	0	1	2		
Stature						-0.33	Short
Chest Width						+2.10	Wide
Body Depth						+0.46	Deep
Angularity						+0.46	Open Rib
Rump Angle						-0.20	High Pins
Thurl Width						+1.42	Wide
R. Legs-S View						-0.45	Straight
Foot Angle						-0.38	Low
Locomotion						+0.80	Excellent
F. Udder Att.						-0.14	Loose
R. Udder Ht.						+0.47	Very high
Udder Cleft						+0.05	Strong
Udder Depth						-0.40	Below Hock
F. Teat Place						-0.44	Outside
R. Teat Place						+0.35	Close
Teat Length						-0.17	Short
Teat Sideview						+1.28	Apart

Alta UK abide by the ADHB & Holstein UK established code of Advertising. Bulls tested free for genetic recessives will not show these codes for formatting reasons. Prices are subject to change. Terms and conditions apply.

CONFORMATION

Type Merit	1.01	Mammary	0.49
Legs & Feet	0.55	Rel	55%

PRODUCTION (0 UK Daughters in 0 UK Herds)

Milk	+1083 Kgs	+68% Rel
Protein	+36.4 Kgs	+0.01%
Fat	+32.8 Kgs	-0.11%

HEALTH & MANAGEMENT

Lifespan	88	Ease of Milk	+0.85
Fertility	+0.9	Temperament	+0.4
SCC	-25	Maintenance	9
MAST	-2	Dairy Carcass	1.7
Calf Survival	+1.0	TB Advantage	1.3 40%
Lameness Advantage	+1.9	Gestation Length	-4 99%
Digital Dermatitis	+0.1	Feed Advantage	-7 45%
Healthy Cow	+149 59%	Enviro Cow	+2.8 66%

CALVING TRAITS

Direct CE	0.0 +78% Rel	Maternal CE	1.2 +53% Rel
-----------	--------------	-------------	--------------



PLI **+641** Rel 64%

AltaTRACKSTER

65003205436268 | HO6602

NEW

PEAK ALTATRACKSTER-ET

PURSUIT X RESOLVE X YODER

HO840M003205436268 | DOB 8/16/2019

aAa 342 | DMS 246,456 | EFI 10.5 %

Kappa-Casein: AB Beta-Casein: A1A2

Genetic Codes: TC TD TL TP TR TV TY

AHDB Dairy & Holstein UK 08/2022 - GENOMIC



CONFORMATION (0 UK Daughters in 0 UK Herds)

	-2	-1	0	1	2		
Stature						+1.69	Tall
Chest Width						+1.30	Wide
Body Depth						+0.20	Deep
Angularity						+0.32	Open Rib
Rump Angle						-0.74	High Pins
Thurl Width						+1.72	Wide
R. Legs-S View						-1.17	Straight
Foot Angle						+1.80	Steep
Locomotion						+1.08	Excellent
F. Udder Att.						+2.03	Tight
R. Udder Ht.						+1.48	Very high
Udder Cleft						+1.34	Strong
Udder Depth						+2.20	Above hock
F. Teat Place						+1.45	Close
R. Teat Place						+0.79	Close
Teat Length						-0.04	Short
Teat Sideview						+0.42	Apart

Alta UK abide by the ADHB & Holstein UK established code of Advertising. Bulls tested free for genetic recessives will not show these codes for formatting reasons. Prices are subject to change. Terms and conditions apply. Proud to use independent data powered by AHDB Dairy.

CONFORMATION

Type Merit	1.54	Mammary	2.21
Legs & Feet	1.46	Rel	55%

PRODUCTION (0 UK Daughters in 0 UK Herds)

Milk	+392 Kgs	+67% Rel
Protein	+22.4 Kgs	+0.11%
Fat	+25.9 Kgs	+0.12%

HEALTH & MANAGEMENT

Lifespan	128	Ease of Milk	+1.22
Fertility	+9.9	Temperament	+0.1
SCC	-23	Maintenance	23
MAST	-4	Dairy Carcass	0.1
Calf Survival	+0.6	TB Advantage	1.9 42%
Lameness Advantage	+1.9	Gestation Length	-1 54%
Digital Dermatitis	+0.1	Feed Advantage	-43 45%
Healthy Cow	+280 57%	Enviro Cow	+2.4 66%

CALVING TRAITS

Direct CE	-0.6 +64% Rel	Maternal CE	1.4 +53% Rel
-----------	---------------	-------------	--------------



PLI +732 Rel 64%

AltaWHEELHOUSE

65003209641362 | HO6603

PEAK WHEELHOUSE-ET

PURSUIT X DUKE X RUBICON

HO840M003209641362 | DOB 9/2/2019

aAa 423 | DMS 135,345 | EFI 11.1 %

Kappa-Casein: AB Beta-Casein: A2A2

Genetic Codes: TC TD TL TR TV TY

AHDB Dairy & Holstein UK 08/2022 - GENOMIC



CONFORMATION (0 UK Daughters in 0 UK Herds)

	-2	-1	0	1	2		
Stature						+0.47	Tall
Chest Width						+2.07	Wide
Body Depth						+0.84	Deep
Angularity						+1.00	Open Rib
Rump Angle						+1.61	Low Pins
Thurl Width						+2.20	Wide
R. Legs-S View						-0.03	Straight
Foot Angle						+0.43	Steep
Locomotion						+0.71	Excellent
F. Udder Att.						+0.67	Tight
R. Udder Ht.						+0.95	Very high
Udder Cleft						+0.88	Strong
Udder Depth						+0.23	Above hock
F. Teat Place						+1.65	Close
R. Teat Place						+1.44	Close
Teat Length						-1.10	Short
Teat Sideview						+0.66	Apart

Alta UK abide by the ADHB & Holstein UK established code of Advertising. Bulls tested free for genetic recessives will not show these codes for formatting reasons. Prices are subject to change. Terms and conditions apply.

CONFORMATION

Type Merit	1.55	Mammary	1.30
Legs & Feet	0.79	Rel	55%

PRODUCTION (0 UK Daughters in 0 UK Herds)

Milk	+746 Kgs	+67% Rel
Protein	+29.5 Kgs	+0.06%
Fat	+43.1 Kgs	+0.15%

HEALTH & MANAGEMENT

Lifespan	125	Ease of Milk	+0.43
Fertility	+7.9	Temperament	+0.2
SCC	-15	Maintenance	15
MAST	-1	Dairy Carcass	1.0
Calf Survival	+1.0	TB Advantage	2.4 43%
Lameness Advantage	+1.9	Gestation Length	-1 98%
Digital Dermatitis	-0.1	Feed Advantage	+23 45%
Healthy Cow	+212 57%	Enviro Cow	+3.3 66%

CALVING TRAITS

Direct CE	0.3 +76% Rel	Maternal CE	1.3 +53% Rel
-----------	--------------	-------------	--------------



PLI +882 Rel 63%

AltaZEOLITE

65003215425436 | HO7222

PEAK ALTAZEOLITE-ET

AltaZAZZLE X POSITIVE X MEDLEY

HO840M003215425436 | DOB 4/27/2020

aAa 432 | DMS 561,135 | EFI 11.0 %

Kappa-Casein: BB Beta-Casein: A1A2

Haplotype: HH6C | Genetic Codes: TC TD TL TP TR TV TY

AHDB Dairy & Holstein UK 08/2022 - GENOMIC



CONFORMATION (0 UK Daughters in 0 UK Herds)

	-2	-1	0	1	2		
Stature						+0.11	Tall
Chest Width						+0.82	Wide
Body Depth						-0.31	Shallow
Angularity						+0.17	Open Rib
Rump Angle						+1.23	Low Pins
Thurl Width						+0.47	Wide
R. Legs-S View						-0.17	Straight
Foot Angle						+0.33	Steep
Locomotion						+0.11	Excellent
F. Udder Att.						+0.99	Tight
R. Udder Ht.						+0.63	Very high
Udder Cleft						-0.18	Broken
Udder Depth						+0.60	Above hock
F. Teat Place						+0.21	Close
R. Teat Place						-0.10	Apart
Teat Length						-1.68	Short
Teat Sideview						+0.56	Apart

Alta UK abide by the ADHB & Holstein UK established code of Advertising. Bulls tested free for genetic recessives will not show these codes for formatting reasons. Prices are subject to change. Terms and conditions apply. Proud to use independent data powered by AHDB Dairy.

CONFORMATION

Type Merit	0.70	Mammary	0.93
Legs & Feet	0.05	Rel	53%

PRODUCTION (0 UK Daughters in 0 UK Herds)

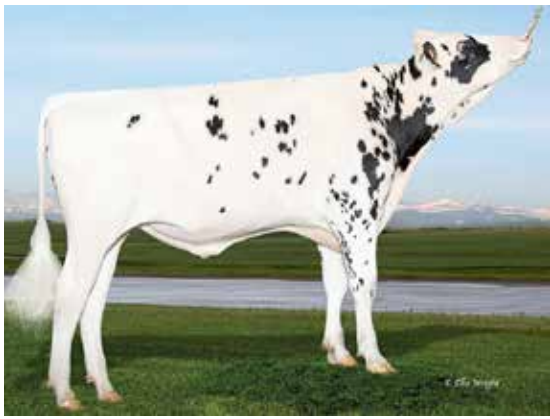
Milk	+926 Kgs	+67% Rel
Protein	+36.9 Kgs	+0.07%
Fat	+51.2 Kgs	+0.15%

HEALTH & MANAGEMENT

Lifespan	134	Ease of Milk	+0.24
Fertility	+9.5	Temperament	+0.6
SCC	-19	Maintenance	6
MAST	-2	Dairy Carcass	0.4
Calf Survival	+0.1	TB Advantage	0.0 40%
Lameness Advantage	+1.9	Gestation Length	-1 55%
Digital Dermatitis	+0.2	Feed Advantage	+83 45%
Healthy Cow	+218 56%	Enviro Cow	+4.1 65%

CALVING TRAITS

Direct CE	0.1 +64% Rel	Maternal CE	1.5 +53% Rel
-----------	--------------	-------------	--------------



PLI **+812** Rel 63%

AltaZINGLER

65003213001126 | HO6887

PEAK ALTAZINGLER-ET
 AltaZAZZLE X AltaROBERT X FRAZZLED
 HO840M003213001126 | DOB 4/4/2020
 aAa 234 | DMS 561,126 | EFI 10.9 %
 Kappa-Casein: AB Beta-Casein: A1A2
 Genetic Codes: TC TD TL TP TR TV TY
 AHDB Dairy & Holstein UK 08/2022 - GENOMIC



CONFORMATION (0 UK Daughters in 0 UK Herds)

	-2	-1	0	1	2		
Stature						+0.08	Tall
Chest Width						-0.10	Narrow
Body Depth						-1.07	Shallow
Angularity						-0.56	Coarse
Rump Angle						+0.54	Low Pins
Thurl Width						+0.14	Wide
R. Legs-S View						+0.20	Sickled
Foot Angle						-0.18	Low
Locomotion						+0.20	Excellent
F. Udder Att.						+1.59	Tight
R. Udder Ht.						-0.09	Very Low
Udder Cleft						-0.58	Broken
Udder Depth						+1.30	Above hock
F. Teat Place						-0.53	Outside
R. Teat Place						-0.74	Apart
Teat Length						-0.11	Short
Teat Sideview						-0.16	Close

Alta UK abide by the ADHB & Holstein UK established code of Advertising. Bulls tested free for genetic recessives will not show these codes for formatting reasons. Prices are subject to change. Terms and conditions apply.

CONFORMATION

Type Merit	0.38	Mammary	0.89
Legs & Feet	0.19	Rel	53%

PRODUCTION (0 UK Daughters in 0 UK Herds)

Milk	+620 Kgs	+67% Rel
Protein	+26.0 Kgs	+0.06%
Fat	+34.5 Kgs	+0.11%

HEALTH & MANAGEMENT

Lifespan	180	Ease of Milk	+0.01
Fertility	+14.8	Temperament	+0.4
SCC	-29	Maintenance	1
MAST	-3	Dairy Carcass	1.0
Calf Survival	+1.0	TB Advantage	1.1 41%
Lameness Advantage	+2.1	Gestation Length	-2 55%
Digital Dermatitis	+0.3	Feed Advantage	+106 45%
Healthy Cow	+321 56%	Enviro Cow	+3.7 65%

CALVING TRAITS

Direct CE	0.3 +64% Rel	Maternal CE	1.2 +53% Rel
-----------	--------------	-------------	--------------

BEEF x DAIRY

ASK YOUR BREEDING ADVISOR ABOUT OUR RANGE OF AVAILABLE BEEF SIRES

BLACK ANGUS



HIGHWAY

UK959342703271
 AI code AA1784
 Birthdate 04-24-2019

BELGIAN BLUE



AltaKJELD

NL 944457429
 AI code BB1655
 Birthdate 13-02-2017

SIMMENTAL



MISSILE

3594131
 AI code SG1366
 Birthdate 04-16-2018

LIMOUSIN



IFOR

MGD13-8897
 AI code LN2553
 Birthdate 09-26-2013



FRESH START



Give them both a **FRESH START**

This fresh cow needs support to get off to the best possible start in her lactation. This calf requires support from essential colostral protein for her best possible start in life.

The Alta **FRESH START** Maternity Package



FOR YOUR FRESH COW

RumiLife CAL24 nutritional supplement

- ◆ Uniquely formulated calcium bolus
- ◆ Contains Vitamin D & Magnesium
- ◆ Sustained 24 hour calcium release
- ◆ 100gm Calcium application
- ◆ 2 boluses with 1 application



FOR YOUR NEWBORN CALF

Calf's Choice Total 100

- ◆ Natural Bovine Colostrum
- ◆ Safe & Effective
- ◆ High in colostral fat
- ◆ Convenient
- ◆ Sourced in Europe

Contact us for more details on how to incorporate the **FRESH START** Maternity Package on your dairy.

uk.altagenetics.com/products

Fugazza Antonio Tapla
Fugazza Holsteins Farm; Italy



PLI **+693** Rel 92%

CONFORMATION (84 UK Daughters in 15 UK Herds) (695 D | 196 H 95%R US)

	-2	-1	0	1	2		
Stature						-0.44	Short
Chest Width						+0.84	Wide
Body Depth						+0.81	Deep
Angularity						+0.98	Open Rib
Rump Angle						+0.50	Low Pins
Thurl Width						+0.58	Wide
R. Legs-S View						+1.65	Sickled
Foot Angle						-1.98	Low
Locomotion						+1.59	Excellent
F. Udder Att.						+0.03	Tight
R. Udder Ht.						+0.20	Very high
Udder Cleft						-0.10	Broken
Udder Depth						-1.04	Below Hock
F. Teat Place						+1.70	Close
R. Teat Place						+1.05	Close
Teat Length						-1.38	Short
Teat Sideview						+1.19	Apart

Alta UK abide by the ADHB & Holstein UK established code of Advertising. Bulls tested free for genetic recessives will not show these codes for formatting reasons. Prices are subject to change. Terms and conditions apply.

AltaANTONIO

65003138948148 | H05198

AURORA ALTAANTONIO-ET
BANDARES X COMMANDER X MAYFIELD
HO840M003138948148 | DOB 10/16/2016
aAa 351 | DMS 135,561 | EFI 10.0 %
Kappa-Casein: BB Beta-Casein: A2A2
Genetic Codes: TC TD TL TP TR TV TY
AHDB Dairy & Holstein UK 08/2022 - PROVEN



CONFORMATION

Type Merit	1.38	Mammary	0.59
Legs & Feet	1.36	Rel	89%

PRODUCTION (201 UK Daughters in 42 UK Herds)(2059D | 461H 20%US)

Milk	+847 Kgs	+97% Rel
Protein	+29.9 Kgs	+0.02%
Fat	+38.2 Kgs	+0.05%

HEALTH & MANAGEMENT

Lifespan	128	Ease of Milk	+2.44
Fertility	+4.8	Temperament	+0.4
SCC	-11	Maintenance	-1
MAST	0	Dairy Carcass	1.2
Calf Survival	+2.7	TB Advantage	-4.3 91%
Lameness Advantage	+2.1	Gestation Length	+1 99%
Digital Dermatitis	+0.6	Feed Advantage	+76 61%
Healthy Cow	+182 83%	Enviro Cow	+3.3 95%

CALVING TRAITS

Direct CE	-0.7 +90% Rel	Maternal CE	0.6 +72% Rel
-----------	---------------	-------------	--------------

AltaINDIGO

65003147839890 | H05843

PEAK ALTAINDIGO-ET
IMAX X DRACO X SUPERSIRE
HO840M003147839890 | DOB 11/21/2017
aAa 342 | DMS 345,135 | EFI 11.2 %
Kappa-Casein: AE Beta-Casein: A1A2
Genetic Codes: TC TD TL TP TR TV TY
AHDB Dairy & Holstein UK 08/2022 - PROVEN



CONFORMATION

Type Merit	1.24	Mammary	1.43
Legs & Feet	0.74	Rel	69%

PRODUCTION (0 UK Daughters in 0 UK Herds)(266 D | 31 H 100% US)

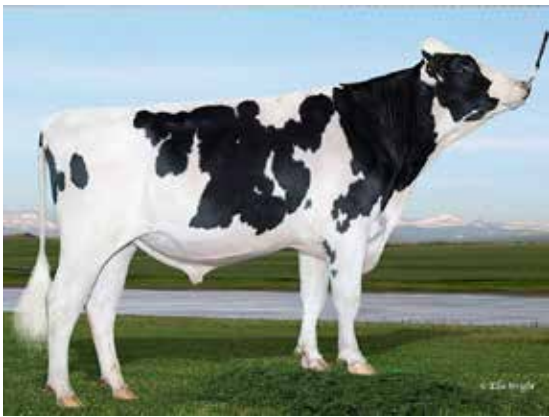
Milk	+939 Kgs	+81% Rel
Protein	+31.7 Kgs	+0.01%
Fat	+38.6 Kgs	+0.01%

HEALTH & MANAGEMENT

Lifespan	73	Ease of Milk	+0.75
Fertility	0.0	Temperament	+0.3
SCC	-4	Maintenance	17
MAST	0	Dairy Carcass	0.3
Calf Survival	+3.4	TB Advantage	3.2 46%
Lameness Advantage	+2.2	Gestation Length	-1 99%
Digital Dermatitis	+0.4	Feed Advantage	-2 53%
Healthy Cow	+121 65%	Enviro Cow	+2.7 77%

CALVING TRAITS

Direct CE	0.0 +76% Rel	Maternal CE	0.7 +61% Rel
-----------	--------------	-------------	--------------



PLI **+603** Rel 76%

CONFORMATION (0 UK Daughters in 0 UK Herds) (52 D | 10 H 87%R US)

	-2	-1	0	1	2		
Stature						+0.91	Tall
Chest Width						+1.57	Wide
Body Depth						+0.22	Deep
Angularity						+0.69	Open Rib
Rump Angle						+0.57	Low Pins
Thurl Width						+1.38	Wide
R. Legs-S View						+0.16	Sickled
Foot Angle						+0.25	Steep
Locomotion						+0.75	Excellent
F. Udder Att.						+0.94	Tight
R. Udder Ht.						+1.70	Very high
Udder Cleft						+0.28	Strong
Udder Depth						+0.68	Above hock
F. Teat Place						+0.03	Close
R. Teat Place						+0.40	Close
Teat Length						+0.71	Long
Teat Sideview						+1.87	Apart

Alta UK abide by the ADHB & Holstein UK established code of Advertising. Bulls tested free for genetic recessives will not show these codes for formatting reasons. Prices are subject to change. Terms and conditions apply. Proud to use independent data powered by AHDB Dairy.



Cristella Swag 445 V687
Cristella Holsteins; Italy

PLI **+518** Rel 93%

AltaSWAG

65003136264642 | HO5103

OCD ALTASWAG-ET
MODESTY X MOHAWK X ROBUST
HO840M003136264642 | DOB 4/18/2016
aAa 324 | DMS 345,234 | EFI 10.5 %
Kappa-Casein: AE Beta-Casein: A1A2
Genetic Codes: TC TD TL TP TR TV TY
AHDB Dairy & Holstein UK 08/2022 - PROVEN



CONFORMATION (51 UK Daughters in 12 UK Herds) (864 D | 159 H 95%R US)

	-2	-1	0	1	2		
Stature						+0.25	Tall
Chest Width						+1.84	Wide
Body Depth						+0.69	Deep
Angularity						+0.19	Open Rib
Rump Angle						+0.07	Low Pins
Thurl Width						+0.13	Wide
R. Legs-S View						+0.44	Sickled
Foot Angle						+0.11	Steep
Locomotion						+1.31	Excellent
F. Udder Att.						+1.51	Tight
R. Udder Ht.						+1.14	Very high
Udder Cleft						-0.86	Broken
Udder Depth						+0.81	Above hock
F. Teat Place						-0.30	Outside
R. Teat Place						-1.12	Apart
Teat Length						-0.04	Short
Teat Sideview						-0.69	Close

Alta UK abide by the ADHB & Holstein UK established code of Advertising. Bulls tested free for genetic recessives will not show these codes for formatting reasons. Prices are subject to change. Terms and conditions apply.

CONFORMATION

Type Merit	1.53	Mammary	0.94
Legs & Feet	1.65	Rel	87%

PRODUCTION (348 UK Daughters in 45 UK Herds)(4346D | 566H 49%US)

Milk	+706 Kgs	+98% Rel
Protein	+25.9 Kgs	+0.03%
Fat	+41.4 Kgs	+0.15%

HEALTH & MANAGEMENT

Lifespan	3	Ease of Milk	+0.94
Fertility	-0.2	Temperament	+0.4
SCC	-6	Maintenance	13
MAST	0	Dairy Carcass	-0.4
Calf Survival	+0.6	TB Advantage	0.8 93%
Lameness Advantage	+3.1	Gestation Length	0 99%
Digital Dermatitis	+0.5	Feed Advantage	-42 61%
Healthy Cow	+74 85%	Enviro Cow	+1.9 95%

CALVING TRAITS

Direct CE	-0.5 +85% Rel	Maternal CE	1.7 +67% Rel
-----------	---------------	-------------	--------------



Ansal Zarek Lampada
Ansal Holstein Farm; Italy

PLI **+669** Rel 86%

AltaZAREK

63000685695366 | HO5734

PEAK ALTAZAREK-ET
AltaTOPSHOT X RUBICON X JABIR
HONLDM000685695366 | DOB 7/16/2017
aAa 342516 | DMS 123,126 | EFI 11.0 %
Kappa-Casein: AB Beta-Casein: A2A2
Genetic Codes: TC TD TL TP TR TV TY
AHDB Dairy & Holstein UK 08/2022 - PROVEN



CONFORMATION (42 UK Daughters in 10 UK Herds) (411 D | 117 H 94%R US)

	-2	-1	0	1	2		
Stature						-0.35	Short
Chest Width						-0.99	Narrow
Body Depth						-2.05	Shallow
Angularity						+0.03	Open Rib
Rump Angle						-0.79	High Pins
Thurl Width						-0.85	Narrow
R. Legs-S View						+2.23	Sickled
Foot Angle						-1.33	Low
Locomotion						+1.04	Excellent
F. Udder Att.						+2.00	Tight
R. Udder Ht.						+0.74	Very high
Udder Cleft						-1.19	Broken
Udder Depth						+1.77	Above hock
F. Teat Place						-0.91	Outside
R. Teat Place						-1.76	Apart
Teat Length						+0.21	Long
Teat Sideview						+0.30	Apart

Alta UK abide by the ADHB & Holstein UK established code of Advertising. Bulls tested free for genetic recessives will not show these codes for formatting reasons. Prices are subject to change. Terms and conditions apply. Proud to use independent data powered by AHDB Dairy.

CONFORMATION

Type Merit	1.28	Mammary	1.86
Legs & Feet	0.82	Rel	85%

PRODUCTION (100 UK Daughters in 15 UK Herds)(1547D | 314H 33%US)

Milk	+859 Kgs	+95% Rel
Protein	+27.2 Kgs	-0.01%
Fat	+38.8 Kgs	+0.05%

HEALTH & MANAGEMENT

Lifespan	128	Ease of Milk	+0.38
Fertility	+2.3	Temperament	+0.2
SCC	-14	Maintenance	-10
MAST	-2	Dairy Carcass	3.1
Calf Survival	+1.6	TB Advantage	1.9 85%
Lameness Advantage	+4.0	Gestation Length	-3 99%
Digital Dermatitis	+0.7	Feed Advantage	+81 60%
Healthy Cow	+199 75%	Enviro Cow	+3.1 89%

CALVING TRAITS

Direct CE	-0.1 +93% Rel	Maternal CE	0.7 +67% Rel
-----------	---------------	-------------	--------------

Celebrating Milestones

from the past 10 years of the Alta CONCEPT PLUS sire fertility evaluation



Alta
CONCEPT PLUS

Est. 2001



70 Million

Units of high fertility
CONCEPT PLUS semen sold



91

Countries where high fertility
CONCEPT PLUS sires have
been used



31,540

Farmers who have trusted CONCEPT PLUS
sires to create more pregnancies
in their herd



1,179

Alta bulls that have earned the
high fertility CONCEPT PLUS
designation



Work with your Alta advisor and use high fertility CONCEPT PLUS sires to create more pregnancies in your herd.

Alta Ltd

Fountain Court, 2 Victoria Square
St Albans, Hertfordshire AL1 3TF
Tel: 01727884534
info@altagenetics.com | uk.altagenetics.com



Alta

Create Value ▲ Build Trust ▲ Deliver Results