

Alta TRUE BLUE SIRE DIRECTORY

December 2022



AltaGOPRO Daughters; Italy

Improve Conception Rates

with Alta CONCEPT PLUS high fertility sires



CONCEPT PLUS DxD
High fertility sires

2-5%

CONVENTIONAL SEMEN
conception rate advantage
with CONCEPT PLUS **DxD sires**



CONCEPT PLUS 511
High fertility sexed UltraPlus™ sires

3-7%

SEXED SEMEN
conception rate advantage
with CONCEPT PLUS **511 sires**

Work with your Alta advisor and use high fertility CONCEPT PLUS sires to create more pregnancies in your herd.

Contact Tracey 02920 617770 | tracey.gretton@altagenetics.com
or contact your local team today! | uk.altagenetics.com/products

THE TOP 10's Select the right bulls for you!

£ PLI	
AltaSEVERUS	922
AltaMORPHEUS	912
AltaLINGUIST	900
AltaKEVLOW	893
AltaZEOLITE	861
AltaOVERTAKE	859
AltaSOLACE	844
AltaSANDRO	834
AltaAVITUS	833
AltaLUMIFY	831

TPI	
AltaFIRST TIME	3084
AltaOVERTAKE	3056
AltaEXQUISITE	3054
AltaAMICK	3033
AltaKEVLOW	3015
AltaEXEMPLARY	3009
AltaALANZO	3006
AltaMAINSTREAM	3005
AltaMAMADI	3003
AltaENDYMION	2990

NM\$	
AltaMAINSTREAM	1130
AltaMORPHEUS	1110
AltaEXQUISITE	1106
AltaSEVERUS	1105
AltaFIRSTTIME	1105
AltaLINGUIST	1093
AltaAMICK	1082
AltaKEVLOW	1067
AltaMAMADI	1047
AltaLUMIFY	1040

DWP\$	
AltaMORPHEUS	1435
AltaAMICK	1274
AltaLINGUIST	1218
AltaMAINSTREAM	1188
AltaEXQUISITE	1184
AltaWINX	1183
AltaWHEELHOUSE	1165
AltaEXEMPLARY	1164
AltaDOUBLOON	1100
AltaMAMADI	1062

FAT KGS	
AltaLUMIFY	58.7
AltaKEVLOW	57.6
AltaLAJOY	53.4
AltaZEMINI	52.9
AltaREGULUS	52.2
AltaLINGUIST	52.1
AltaSONADOR	51.2
AltaFIRSTTIME	51.1
AltaALANZO	50.7
AltaMAINSTREAM	50.1

FAT PC	
AltaAMICK	0.37
AltaFIRST TIME	0.36
AltaREGULUS	0.35
AltaMAMADI	0.34
AltaEXEMPLARY	0.32
AltaMONTU-PP	0.31
AltaFUTURAMA	0.29
AltaALLARIC	0.27
AltaLUMIFY	0.25
AltaLAJOY	0.25

PROTEIN KGS	
AltaKEVLOW	43.3
AltaPLINKO	41.8
AltaALL ACCESS	38.9
AltaGO PRO	38.7
AltaZEMINI	38.7
AltaSEVERUS	37.7
AltaALANZO	37.3
AltaZEOLITE	36.3
AltaAVITUS	36.0
AltaLIENONME	35.6

PROTEIN PC	
AltaMAMADI	0.20
AltaSULIEN	0.15
AltaFUTURAMA	0.14
AltaAMICK	0.14
AltaEXEMPLARY	0.14
Alta FIRST TIME	0.14
Alta ALLARIC	0.13
AltaREGULUS	0.13
AltaROZEBOOM	0.13
AltaCABOT	0.12

MILK	
AltaGO PRO	1479
AltaWINX	1189
AltaDREAMDATE	1178
AltaPOWERBUCK	1083
ALTARUTLAND RED	1047
AltaREFINE RED	1039
AltaPLINKO	1035
AltaKEVLOW	1031
AltaTIKI	999
AltaSANDRO	989

SCC %	
AltaAMICK	-32
AltaSOLACE	-29
AltaKAMARA RED	-26
AltaAVITUS	-25
AltaCRAZED	-25
AltaPOWERBUCK	-25
AltaREFINE RED	-25
AltaTIKI	-24
AltaMAMADI	-24
AltaRUTLAND RED	-24

LIFESPAN	
AltaMORPHEUS	183
AltaPOWERBUCK	180
AltaDOUBLOON	177
AltaAMICK	159
AltaSEVERUS	156
AltaEXQUISITE	153
AltaSANDRO	149
AltaREFINE RED	146
AltaGULLIVER	143
AltaWINX	143

DAUGHTER FERTILITY	
AltaSOLACE	15.0
AltaSEVERUS	14.8
AltaMAMADI	13.8
AltaAMICK	11.5
AltaMORPHEUS	11.3
AltaENTRANCED	11.2
AltaGAINES	10.2
AltaPOWERBUCK	9.6
AltaDOUBLOON	9.4
AltaZEOLITE	9.2

DIRECT CALVING EASE	
AltaALL ACCESS	0.7
AltaCRAZED	0.7
AltaENTRANCED	0.5
AltaLINGUIST	0.4
AltaGIVEAWAY	0.4
AltaSEVERUS	0.3
AltaLIENONME	0.3
AltaDOUBLOON	0.2
AltaMAMADI	0.2
AltaWHEELHOUSE	0.2

TYPE MERIT	
AltaKAMARA RED	2.46
AltaBARBAZZA	1.90
AltaREFINE RED	1.83
AltaPOWERBUCK	1.65
AltaSULIEN	1.64
AltaGULLIVER	1.56
AltaDOUBLOON	1.55
AltaTRACKSTER	1.53
AltaSWAG	1.52
AltaWINX	1.50

MAMMARY	
AltaDEE-JAY	3.66
AltaKAMARA -RED	2.83
AltaTRACKSTER	2.24
AltaHAILED	2.22
AltaBARBAZZA	2.06
AltaTRY RED	1.92
AltaFUTURAMA	1.74
AltaIZZA	1.68
AltaPOWERBUCK	1.64
AltaLUMIFY	1.54

LEGS & FEET	
AltaSULIEN	1.67
AltaRUTLAND-RED	1.57
AltaSWAG	1.53
AltaBOOYAH	1.46
AltaANTONIO	1.38
AltaTRACKSTER	1.37
AltaEXEMPLARY	1.37
AltaKAMARA-RED	1.35
AltaENTRANCED	1.33
AltaCABOT	1.31



PLI **+840** Rel 63%

AltaALANZO

65003215425521 | HO6978

PEAK ALTAALANZO-ET
 AltaZAZZLE X GUINNESS X JEDI
 HO840M003215425521 | DOB 5/24/2020
 aAa 213 | DMS 126,123 | EFI 11.4 %
 Kappa-Casein: AB Beta-Casein: A2A2
 Genetic Codes: TC TD TL TP TR TV TY
 AHDB DAIRY & HOLSTEIN UK 12/2022- GENOMIC



CONFORMATION (0 UK Daughters in 0 UK Herds)

	-2	-1	0	1	2		
Stature						+0.89	Tall
Chest Width						-1.03	Narrow
Body Depth						-0.79	Shallow
Angularity						+1.46	Open Rib
Rump Angle						-0.46	High Pins
Thurl Width						+0.50	Wide
R. Legs-S View						-1.33	Straight
Foot Angle						+1.10	Steep
Locomotion						+0.61	Excellent
F. Udder Att.						+1.08	Tight
R. Udder Ht.						+1.13	Very high
Udder Cleft						-0.06	Broken
Udder Depth						+1.30	Above hock
F. Teat Place						+0.07	Close
R. Teat Place						-0.62	Apart
Teat Length						-0.84	Short
Teat Sideview						+0.27	Apart

Alta UK abide by the ADHB & Holstein UK established code of Advertising. Bulls tested free for genetic recessives will not show these codes for formatting reasons. Prices are subject to change. Terms and conditions apply.

CONFORMATION

Type Merit	0.90	Mammary	1.11
Legs & Feet	0.81	Rel	53%

PRODUCTION (0 UK Daughters in 0 UK Herds)

Milk	+908 Kgs	+67% Rel
Protein	+37.3 Kgs	+0.08%
Fat	+50.7 Kgs	+0.16%

HEALTH & MANAGEMENT

Lifespan	85	Ease of Milk	+1.57
Fertility	+6.1	Temperament	+0.1
SCC	-7	Maintenance	-1
MAST	0	Dairy Carcass	0.0
Calf Survival	+2.0	TB Advantage	0.4 40%
Lameness Advantage	+3.0	Gestation Length	0 53%
Digital Dermatitis	+0.4	Feed Advantage	+129 45%
Healthy Cow	+170 57%	Enviro Cow	+4.0 65%

CALVING TRAITS

Direct CE	-0.1 +72% Rel	Maternal CE	1.0 +53% Rel
-----------	---------------	-------------	--------------



PLI **+759** Rel 63%

AltaALL ACCESS

65003215425626 | HO7368

PEAK ALL ACCESS-ET
 AltaPLINKO X POSITIVE X MEDLEY
 HO840M003215425626 | DOB 7/1/2020
 aAa 432 | DMS 234,123 | EFI 11.0 %
 Kappa-Casein: AB Beta-Casein: A2A2
 Genetic Codes: TC TD TL TV TY
 AHDB DAIRY & HOLSTEIN UK 12/2022- GENOMIC



CONFORMATION (0 UK Daughters in 0 UK Herds)

	-2	-1	0	1	2		
Stature						+0.36	Tall
Chest Width						+0.56	Wide
Body Depth						-0.37	Shallow
Angularity						+0.32	Open Rib
Rump Angle						+2.71	Low Pins
Thurl Width						+0.02	Wide
R. Legs-S View						-0.58	Straight
Foot Angle						+0.05	Steep
Locomotion						+0.51	Excellent
F. Udder Att.						-0.36	Loose
R. Udder Ht.						+0.04	Very high
Udder Cleft						-0.20	Broken
Udder Depth						-0.45	Below Hock
F. Teat Place						-0.02	Outside
R. Teat Place						+0.42	Close
Teat Length						-1.00	Short
Teat Sideview						+0.43	Apart

Alta UK abide by the ADHB & Holstein UK established code of Advertising. Bulls tested free for genetic recessives will not show these codes for formatting reasons. Prices are subject to change. Terms and conditions apply. Proud to use independent data powered by AHDB Dairy.

CONFORMATION

Type Merit	0.23	Mammary	-0.06
Legs & Feet	0.50	Rel	53%

PRODUCTION (0 UK Daughters in 0 UK Herds)

Milk	+874 Kgs	+67% Rel
Protein	+38.8 Kgs	+0.11%
Fat	+44.2 Kgs	+0.10%

HEALTH & MANAGEMENT

Lifespan	88	Ease of Milk	+0.30
Fertility	+8.8	Temperament	+0.3
SCC	0	Maintenance	6
MAST	+1	Dairy Carcass	1.0
Calf Survival	-0.5	TB Advantage	1.7 40%
Lameness Advantage	+2.0	Gestation Length	-3 55%
Digital Dermatitis	+0.1	Feed Advantage	+33 45%
Healthy Cow	+124 57%	Enviro Cow	+3.6 66%

CALVING TRAITS

Direct CE	0.7 +63% Rel	Maternal CE	1.1 +53% Rel
-----------	--------------	-------------	--------------



PLI **+807** Rel 63%

AltaAMICK

65003224956015

PEAK ALTAAMICK-ET
 AltaAZZLE X PURSUIT X AltaROBSON
 HO840M003224956015 | DOB 1/5/2021
 aAa 234 | DMS 456,246 | EFI 11.3 %
 Kappa-Casein: AB Beta-Casein: A1A2
 Genetic Codes: TC TD TL TV TY
 AHDB DAIRY & HOLSTEIN UK 12/2022- GENOMIC



CONFORMATION (0 UK Daughters in 0 UK Herds)

	-2	-1	0	1	2		
Stature						+0.52	Tall
Chest Width						-0.24	Narrow
Body Depth						-1.15	Shallow
Angularity						+0.42	Open Rib
Rump Angle						+0.01	Low Pins
Thurl Width						+0.28	Wide
R. Legs-S View						+0.03	Sickled
Foot Angle						+0.16	Steep
Locomotion						+0.75	Excellent
F. Udder Att.						+0.90	Tight
R. Udder Ht.						+0.63	Very high
Udder Cleft						+0.26	Strong
Udder Depth						+1.01	Above hock
F. Teat Place						+0.70	Close
R. Teat Place						-0.03	Apart
Teat Length						+0.45	Long
Teat Sideview						+0.16	Apart

Alta UK abide by the ADHB & Holstein UK established code of Advertising. Bulls tested free for genetic recessives will not show these codes for formatting reasons. Prices are subject to change. Terms and conditions apply.

CONFORMATION

Type Merit	0.85	Mammary	0.99
Legs & Feet	0.92	Rel	53%

PRODUCTION (0 UK Daughters in 0 UK Herds)

Milk	+324 Kgs	+67% Rel
Protein	+22.4 Kgs	+0.14%
Fat	+44.5 Kgs	+0.37%

HEALTH & MANAGEMENT

Lifespan	159	Ease of Milk	-0.33
Fertility	+11.5	Temperament	+0.0
SCC	-32	Maintenance	2
MAST	-4	Dairy Carcass	0.1
Calf Survival	+0.2	TB Advantage	2.2 40%
Lameness Advantage	+2.3	Gestation Length	-1 55%
Digital Dermatitis	+0.3	Feed Advantage	+50 45%
Healthy Cow	+302 57%	Enviro Cow	+3.5 65%

CALVING TRAITS

Direct CE	0.0 +64% Rel	Maternal CE	1.3 +53% Rel
-----------	--------------	-------------	--------------



PLI **+833** Rel 63%

AltaAVITUS

65003215425267 | HO6789

PEAK ALTAAVITUS-ET
 FASTBALL X MARIUS X AltaROBSON
 HO840M003215425267 | DOB 2/27/2020
 aAa 243 | DMS 561,126 | EFI 11.3 %
 Kappa-Casein: BE Beta-Casein: A1A2
 Genetic Codes: TC TD TL TP TR TV TY
 AHDB DAIRY & HOLSTEIN UK 12/2022- GENOMIC



CONFORMATION (0 UK Daughters in 0 UK Herds)

	-2	-1	0	1	2		
Stature						-0.91	Short
Chest Width						+0.88	Wide
Body Depth						-0.58	Shallow
Angularity						-0.02	Coarse
Rump Angle						-0.07	High Pins
Thurl Width						-0.08	Narrow
R. Legs-S View						-0.07	Straight
Foot Angle						+0.25	Steep
Locomotion						+1.17	Excellent
F. Udder Att.						+0.40	Tight
R. Udder Ht.						+0.77	Very high
Udder Cleft						-0.35	Broken
Udder Depth						+0.13	Above hock
F. Teat Place						-1.31	Outside
R. Teat Place						-1.24	Apart
Teat Length						-0.41	Short
Teat Sideview						+0.64	Apart

Alta UK abide by the ADHB & Holstein UK established code of Advertising. Bulls tested free for genetic recessives will not show these codes for formatting reasons. Prices are subject to change. Terms and conditions apply. Proud to use independent data powered by AHDB Dairy.

CONFORMATION

Type Merit	1.08	Mammary	0.83
Legs & Feet	1.05	Rel	54%

PRODUCTION (0 UK Daughters in 0 UK Herds)

Milk	+929 Kgs	+67% Rel
Protein	+36.0 Kgs	+0.06%
Fat	+37.4 Kgs	0.00%

HEALTH & MANAGEMENT

Lifespan	125	Ease of Milk	+0.92
Fertility	+5.4	Temperament	+1.1
SCC	-25	Maintenance	-3
MAST	-2	Dairy Carcass	2.6
Calf Survival	+2.0	TB Advantage	1.9 41%
Lameness Advantage	+2.1	Gestation Length	-3 96%
Digital Dermatitis	+0.3	Feed Advantage	+139 45%
Healthy Cow	+222 56%	Enviro Cow	+3.9 66%

CALVING TRAITS

Direct CE	-0.2 +71% Rel	Maternal CE	0.6 +52% Rel
-----------	---------------	-------------	--------------



PLI **+683** Rel 63%

AltaBARBAZZA

65003224956190 | H07369

PEAK ALTABARBAZZA-ET
 AltaHAILED X PURSUIT X AltaROBSON
 H0840M003224956190 | DOB 2/23/2021
 aAa 243 | DMS 561,456 | EFI 10.6 %
 Kappa-Casein: AB Beta-Casein: A1A2
 Genetic Codes: TC TD TL TR TV TY
 AHDB DAIRY & HOLSTEIN UK 12/2022- GENOMIC



CONFORMATION (0 UK Daughters in 0 UK Herds)

	-2	-1	0	1	2		
Stature						+0.22	Tall
Chest Width						+0.36	Wide
Body Depth						-0.48	Shallow
Angularity						+1.13	Open Rib
Rump Angle						-2.24	High Pins
Thurl Width						+1.17	Wide
R. Legs-S View						+0.43	Sickled
Foot Angle						+0.12	Steep
Locomotion						+0.95	Excellent
F. Udder Att.						+1.86	Tight
R. Udder Ht.						+2.02	Very high
Udder Cleft						+1.19	Strong
Udder Depth						+1.26	Above hock
F. Teat Place						+0.19	Close
R. Teat Place						+0.43	Close
Teat Length						+1.04	Long
Teat Sideview						+0.47	Apart

Alta UK abide by the ADHB & Holstein UK established code of Advertising. Bulls tested free for genetic recessives will not show these codes for formatting reasons. Prices are subject to change. Terms and conditions apply.

CONFORMATION

Type Merit	1.90	Mammary	2.06
Legs & Feet	0.90	Rel	53%

PRODUCTION (0 UK Daughters in 0 UK Herds)

Milk	+794 Kgs	+67% Rel
Protein	+30.8 Kgs	+0.05%
Fat	+36.6 Kgs	+0.05%

HEALTH & MANAGEMENT

Lifespan	82	Ease of Milk	+0.55
Fertility	+7.0	Temperament	+0.3
SCC	-14	Maintenance	2
MAST	-2	Dairy Carcass	1.3
Calf Survival	+1.6	TB Advantage	2.7 42%
Lameness Advantage	+2.1	Gestation Length	-2 55%
Digital Dermatitis	+0.1	Feed Advantage	+6 45%
Healthy Cow	+206 56%	Enviro Cow	+2.8 65%

CALVING TRAITS

Direct CE	-0.2 +64% Rel	Maternal CE	1.1 +50% Rel
-----------	---------------	-------------	--------------



PLI **+740** Rel 65%

AltaCRAZED

65003205436551 | H06422

PEAK ALTACRAZED-ET
 AltaCABOT X FRAZZLED X MONTROSS
 H0840M003205436551 | DOB 6/18/2019
 aAa 354 | DMS 345,135 | EFI 11.7 %
 Kappa-Casein: BB Beta-Casein: A2A2
 Haplotype: HH6C | Genetic Codes: TC TD TL TP TR TV TY
 AHDB DAIRY & HOLSTEIN UK 12/2022- GENOMIC



CONFORMATION (0 UK Daughters in 0 UK Herds)

	-2	-1	0	1	2		
Stature						-1.44	Short
Chest Width						+0.61	Wide
Body Depth						-0.96	Shallow
Angularity						-1.12	Coarse
Rump Angle						+0.50	Low Pins
Thurl Width						-0.26	Narrow
R. Legs-S View						+0.16	Sickled
Foot Angle						-0.39	Low
Locomotion						+0.91	Excellent
F. Udder Att.						+0.83	Tight
R. Udder Ht.						+0.73	Very high
Udder Cleft						+0.07	Strong
Udder Depth						+0.73	Above hock
F. Teat Place						+0.18	Close
R. Teat Place						-0.11	Apart
Teat Length						-0.69	Short
Teat Sideview						+0.07	Apart

Alta UK abide by the ADHB & Holstein UK established code of Advertising. Bulls tested free for genetic recessives will not show these codes for formatting reasons. Prices are subject to change. Terms and conditions apply. Proud to use independent data powered by AHDB Dairy.

CONFORMATION

Type Merit	0.80	Mammary	1.29
Legs & Feet	0.66	Rel	56%

PRODUCTION (0 UK Daughters in 0 UK Herds)

Milk	+636 Kgs	+68% Rel
Protein	+27.5 Kgs	+0.07%
Fat	+37.7 Kgs	+0.14%

HEALTH & MANAGEMENT

Lifespan	73	Ease of Milk	-0.23
Fertility	+2.5	Temperament	+0.3
SCC	-25	Maintenance	-8
MAST	-2	Dairy Carcass	2.4
Calf Survival	+2.5	TB Advantage	-1.8 48%
Lameness Advantage	+1.8	Gestation Length	-4 99%
Digital Dermatitis		Feed Advantage	+170 45%
Healthy Cow	+185 60%	Enviro Cow	+3.4 67%

CALVING TRAITS

Direct CE	0.7 +78% Rel	Maternal CE	0.6 +53% Rel
-----------	--------------	-------------	--------------



PLI **+817** Rel 63%

AltaDOUBLOON

NEW

65003229908344

PEAK ALTADOUBLOON-ET
 AltaWHEELHOUSE X PURSUIT X MEDLEY
 HO840M003229908344 | DOB 8/23/2021
 aAa 423 | DMS 561,126 | EFI 11.2 %
 Kappa-Casein: AA Beta-Casein: A2A2
 Genetic Codes: TC TD TL TV TY
 AHDB DAIRY & HOLSTEIN UK 12/2022- GENOMIC



CONFORMATION (0 UK Daughters in 0 UK Herds)

	-2	-1	0	1	2		
Stature			0			-0.08	Short
Chest Width				1		+1.22	Wide
Body Depth			0			-0.10	Shallow
Angularity				1		+0.69	Open Rib
Rump Angle				1		+1.03	Low Pins
Thurl Width				1		+1.23	Wide
R. Legs-S View				0		+0.39	Sickled
Foot Angle			-1			-0.55	Low
Locomotion				1		+1.13	Excellent
F. Udder Att.				1		+0.57	Tight
R. Udder Ht.				1		+1.01	Very high
Udder Cleft			0			-0.09	Broken
Udder Depth				0		+0.10	Above hock
F. Teat Place				0		+0.36	Close
R. Teat Place			-1			-0.44	Apart
Teat Length				0		+0.09	Long
Teat Sideview				1		+1.21	Apart

Alta UK abide by the ADHB & Holstein UK established code of Advertising. Bulls tested free for genetic recessives will not show these codes for formatting reasons. Prices are subject to change. Terms and conditions apply.

CONFORMATION

Type Merit	1.55	Mammary	1.09
Legs & Feet	1.16	Rel	53%

PRODUCTION (0 UK Daughters in 0 UK Herds)

Milk	+742 Kgs	+67% Rel
Protein	+30.5 Kgs	+0.07%
Fat	+40.2 Kgs	+0.12%

HEALTH & MANAGEMENT

Lifespan	177	Ease of Milk	+0.69
Fertility	+9.4	Temperament	+0.4
SCC	-15	Maintenance	5
MAST	-2	Dairy Carcass	1.4
Calf Survival	+1.4	TB Advantage	2.4 41%
Lameness Advantage	+2.1	Gestation Length	-1 55%
Digital Dermatitis	+0.3	Feed Advantage	+93 45%
Healthy Cow	+263 56%	Enviro Cow	+3.9 65%

CALVING TRAITS

Direct CE	0.2 +64% Rel	Maternal CE	1.2 +53% Rel
-----------	--------------	-------------	--------------



PLI **+709** Rel 63%

AltaENDYMION

NEW

65003235932957

PEAK ALTAENDYMION-ET
 AltaWHEELHOUSE X AltaZAZZLE X POSITIVE
 HO840M003235932957 | DOB 8/16/2021
 aAa 243 | EFI 10.5 %
 Kappa-Casein: BB Beta-Casein: A1A2
 Genetic Codes: TC TD TL TV TY
 AHDB DAIRY & HOLSTEIN UK 12/2022- GENOMIC



CONFORMATION (0 UK Daughters in 0 UK Herds)

	-2	-1	0	1	2		
Stature				1		+0.64	Tall
Chest Width				1		+0.59	Wide
Body Depth			0			+0.21	Deep
Angularity				1		+1.78	Open Rib
Rump Angle				1		+0.97	Low Pins
Thurl Width				1		+1.80	Wide
R. Legs-S View				0		+0.52	Sickled
Foot Angle				0		+0.53	Steep
Locomotion				0		+0.07	Excellent
F. Udder Att.				0		+0.23	Tight
R. Udder Ht.				1		+1.13	Very high
Udder Cleft				0		+0.05	Strong
Udder Depth				0		-0.13	Below Hock
F. Teat Place				0		+0.61	Close
R. Teat Place				0		+0.62	Close
Teat Length			-1			-1.17	Short
Teat Sideview				0		+0.08	Apart

Alta UK abide by the ADHB & Holstein UK established code of Advertising. Bulls tested free for genetic recessives will not show these codes for formatting reasons. Prices are subject to change. Terms and conditions apply. Proud to use independent data powered by AHDB Dairy.

CONFORMATION

Type Merit	0.94	Mammary	0.65
Legs & Feet	0.43	Rel	53%

PRODUCTION (0 UK Daughters in 0 UK Herds)

Milk	+974 Kgs	+66% Rel
Protein	+34.8 Kgs	+0.03%
Fat	+46.0 Kgs	+0.07%

HEALTH & MANAGEMENT

Lifespan	110	Ease of Milk	-0.11
Fertility	+2.1	Temperament	+0.4
SCC	-11	Maintenance	6
MAST	-1	Dairy Carcass	1.0
Calf Survival	+0.8	TB Advantage	2.7 40%
Lameness Advantage	+2.7	Gestation Length	-1 55%
Digital Dermatitis	+0.3	Feed Advantage	+49 45%
Healthy Cow	+137 56%	Enviro Cow	+3.5 65%

CALVING TRAITS

Direct CE	-0.3 +64% Rel	Maternal CE	1.2 +53% Rel
-----------	---------------	-------------	--------------



PLI **+793** Rel 63%

AltaEXQUISITE

NEW

011H015874

PEAK ALTAEXQUISITE-ET
 AltaZAZZLE X PURSUIT X AltaROBSON
 HO840M003224955987 | DOB 1/1/2021
 aAa 234 | DMS 234,345 | EFI 11.6 %
 Kappa-Casein AB | Beta-Casein A1A2
 Haplotype: HH6C | Genetic Codes TC TD TL TV TY
 AHDB DAIRY & HOLSTEIN UK 12/2022- GENOMIC



CONFORMATION (0 UK Daughters in 0 UK Herds)

	-2	-1	0	1	2	
Stature						+0.24 Tall
Chest Width						-0.14 Narrow
Body Depth						-0.58 Shallow
Angularity						+1.32 Course
Rump Angle						+0.95 Low Pins
Thurl Width						+0.15 Wide
R. Legs-S View						+0.33 Sickled
Foot Angle						+0.46 Steep
Locomotion						+0.76 Excellent
F. Udder Att.						+0.63 Tight
R. Udder Ht.						+1.17 Very high
Udder Cleft						+0.28 Strong
Udder Depth						+0.49 Above hock
F. Teat Place						+0.28 Close
R. Teat Place						-0.05 Apart
Teat Length						-0.42 Short
Teat Sideview						+0.25 Apart

CONFORMATION

Type Merit	+1.33	Mammary	+1.11
Legs & Feet	+0.92	Rel	53%

PRODUCTION (0 UK Daughters in 0 UK Herds)

Milk	+689 Kgs	67% Rel
Protein	+31.0 Kgs	+0.09%
Fat	+41.6 Kgs	+0.16%

HEALTH & MANAGEMENT

Lifespan	153	Ease of Milk	+1.90
Fertility	+8.3	Temperament	+0.5
SCC	-13	Maintenance	-1
Mastitis	-1	Dairy Carcass	+0.2
Calf Survival	+2.0	TB Advantage	2.6 40%
Lameness Advantage	+1.9	Gestation Length	-2 55%
Digital Dermatitis	-0.1	Feed Advantage	+95 45%
Healthy Cow	+231 57%	Enviro Cow	+3.9 65%

CALVING TRAITS

Direct CE	-0.1 64% Rel	Maternal CE	+1.1 53% Rel
-----------	--------------	-------------	--------------



PLI **+747** Rel 64%

AltaGIVEAWAY

NEW

64000013165419

HEIDIFARM ALTAGIVEAWAY-ET
 GAMECHANGER X ROMERO X TESLA
 HOCANM000013165419 | DOB 8/7/2019
 aAa | DMS 561,135 | EFI 10.5 %
 Kappa-Casein: BE Beta-Casein: A1A2
 Genetic Codes: TC TD TL TP TR TV TY
 AHDB DAIRY & HOLSTEIN UK 12/2022- GENOMIC



CONFORMATION (0 UK Daughters in 0 UK Herds)

	-2	-1	0	1	2	
Stature						-1.28 Short
Chest Width						-0.28 Narrow
Body Depth						-1.18 Shallow
Angularity						-0.04 Coarse
Rump Angle						-0.95 High Pins
Thurl Width						-0.65 Narrow
R. Legs-S View						-1.25 Straight
Foot Angle						+1.07 Steep
Locomotion						+0.89 Excellent
F. Udder Att.						+1.20 Tight
R. Udder Ht.						+0.76 Very high
Udder Cleft						-0.22 Broken
Udder Depth						+0.35 Above hock
F. Teat Place						-0.17 Outside
R. Teat Place						+0.33 Close
Teat Length						-0.15 Short
Teat Sideview						-0.70 Close

CONFORMATION

Type Merit	0.67	Mammary	0.71
Legs & Feet	0.73	Rel	55%

PRODUCTION (0 UK Daughters in 0 UK Herds)

Milk	+842 Kgs	+67% Rel
Protein	+32.6 Kgs	+0.05%
Fat	+40.8 Kgs	+0.08%

HEALTH & MANAGEMENT

Lifespan	34	Ease of Milk	-0.80
Fertility	+5.9	Temperament	-0.4
SCC	-18	Maintenance	-14
MAST	-1	Dairy Carcass	1.7
Calf Survival	+1.4	TB Advantage	2.2 43%
Lameness Advantage	+1.2	Gestation Length	0 47%
Digital Dermatitis		Feed Advantage	+165 45%
Healthy Cow	+149 56%	Enviro Cow	+3.4 66%

CALVING TRAITS

Direct CE	0.4 +71% Rel	Maternal CE	0.7 +53% Rel
-----------	--------------	-------------	--------------

Alta UK abide by the ADHB & Holstein UK established code of Advertising. Bulls tested free for genetic recessives will not show these codes for formatting reasons. Prices are subject to change. Terms and conditions apply. Proud to use independent data powered by AHDB Dairy.



PLI **+823** Rel 63%

AltaFIRSTTIME

65003225323219 | HO7401

FB ALTAFIRSTTIME-ET
 AltaZAZZLE X ACURA X ROLAN
 HO840M003225323219 | DOB 7/16/2021
 aAa 213 | DMS 246,234 | EFI 11.4 %
 Kappa-Casein: AB Beta-Casein: A1A2
 Haplotype: HH6C | Genetic Codes: TC TD TL TV TY
 AHDB DAIRY & HOLSTEIN UK 12/2022- GENOMIC



CONFORMATION (0 UK Daughters in 0 UK Herds)

	-2	-1	0	1	2		
Stature						-0.33	Short
Chest Width						-0.45	Narrow
Body Depth						-0.47	Shallow
Angularity						+0.81	Open Rib
Rump Angle						+0.54	Low Pins
Thurl Width						-0.17	Narrow
R. Legs-S View						+0.11	Sickled
Foot Angle						+0.34	Steep
Locomotion						+0.94	Excellent
F. Udder Att.						+1.25	Tight
R. Udder Ht.						+1.38	Very high
Udder Cleft						+0.82	Strong
Udder Depth						+0.43	Above hock
F. Teat Place						+0.92	Close
R. Teat Place						+0.67	Close
Teat Length						+0.23	Long
Teat Sideview						-0.47	Close

Alta UK abide by the ADHB & Holstein UK established code of Advertising. Bulls tested free for genetic recessives will not show these codes for formatting reasons. Prices are subject to change. Terms and conditions apply.

CONFORMATION

Type Merit	1.39	Mammary	1.29
Legs & Feet	1.07	Rel	53%

PRODUCTION (0 UK Daughters in 0 UK Herds)

Milk	+487 Kgs	+67% Rel
Protein	+27.9 Kgs	+0.14%
Fat	+51.1 Kgs	+0.36%

HEALTH & MANAGEMENT

Lifespan	131	Ease of Milk	+0.70
Fertility	+6.8	Temperament	+0.4
SCC	-10	Maintenance	-8
MAST	-1	Dairy Carcass	0.4
Calf Survival	+1.8	TB Advantage	1.7 39%
Lameness Advantage	+2.4	Gestation Length	-1 54%
Digital Dermatitis	+0.1	Feed Advantage	+126 45%
Healthy Cow	+206 57%	Enviro Cow	+4.0 65%

CALVING TRAITS

Direct CE	-0.5 +63% Rel	Maternal CE	0.9 +53% Rel
-----------	---------------	-------------	--------------



PLI **+799** Rel 63%

AltaFUTURAMA

65003215425949 | HO7371

PEAK ALTAFUTURAMA-ET
 AltaZAZZLE X CASCADE X REASON
 HO840M003215425949 | DOB 11/8/2020
 aAa 324 | DMS 246,456 | EFI 11.4 %
 Kappa-Casein: AB Beta-Casein: A1A2
 Haplotype: HH6C | Genetic Codes: TC TD TL TV TY
 AHDB DAIRY & HOLSTEIN UK 12/2022- GENOMIC



CONFORMATION (0 UK Daughters in 0 UK Herds)

	-2	-1	0	1	2		
Stature						+1.23	Tall
Chest Width						+0.26	Wide
Body Depth						+0.54	Deep
Angularity						+1.39	Open Rib
Rump Angle						-0.14	High Pins
Thurl Width						+0.85	Wide
R. Legs-S View						+0.57	Sickled
Foot Angle						+1.00	Steep
Locomotion						-0.06	Poor
F. Udder Att.						+1.98	Tight
R. Udder Ht.						+1.59	Very high
Udder Cleft						+0.86	Strong
Udder Depth						+1.28	Above hock
F. Teat Place						+1.65	Close
R. Teat Place						+1.12	Close
Teat Length						-0.46	Short
Teat Sideview						+0.52	Apart

Alta UK abide by the ADHB & Holstein UK established code of Advertising. Bulls tested free for genetic recessives will not show these codes for formatting reasons. Prices are subject to change. Terms and conditions apply. Proud to use independent data powered by AHDB Dairy.

CONFORMATION

Type Merit	1.13	Mammary	1.74
Legs & Feet	0.38	Rel	53%

PRODUCTION (0 UK Daughters in 0 UK Herds)

Milk	+559 Kgs	+67% Rel
Protein	+30.4 Kgs	+0.14%
Fat	+47.8 Kgs	+0.29%

HEALTH & MANAGEMENT

Lifespan	82	Ease of Milk	+0.67
Fertility	+7.7	Temperament	+0.1
SCC	-22	Maintenance	11
MAST	-3	Dairy Carcass	0.2
Calf Survival	+1.6	TB Advantage	1.4 39%
Lameness Advantage	+1.2	Gestation Length	0 55%
Digital Dermatitis	-0.1	Feed Advantage	+60 45%
Healthy Cow	+214 57%	Enviro Cow	+3.5 65%

CALVING TRAITS

Direct CE	-0.7 +63% Rel	Maternal CE	1.0 +53% Rel
-----------	---------------	-------------	--------------



PLI **+766** Rel 64%

AltaGAINES

65003215425484 | HO6886

PEAK ALTAGAINES-ET
 AltaAZZLE X POSITIVE X MEDLEY
 HO840M003215425484 | DOB 5/19/2020
 aAa 423 | DMS 123,135 | EFI 10.6 %
 Kappa-Casein: BB Beta-Casein: A2A2
 Haplotyp: HH6C | Genetic Codes: TC TD TL TP TR TV TY
 AHDB DAIRY & HOLSTEIN UK 12/2022- GENOMIC



CONFORMATION (0 UK Daughters in 0 UK Herds)

	-2	-1	0	1	2		
Stature			0			+0.10	Tall
Chest Width			0			-0.12	Narrow
Body Depth			0			-0.49	Shallow
Angularity			0	1		+0.66	Open Rib
Rump Angle			0	1		+0.83	Low Pins
Thurl Width			0			+0.07	Wide
R. Legs-S View			0			+0.51	Sickled
Foot Angle			0			-0.43	Low
Locomotion			0			+0.09	Excellent
F. Udder Att.			0	1		+1.35	Tight
R. Udder Ht.			0	1		+1.12	Very high
Udder Cleft			0			+0.10	Strong
Udder Depth			0	1		+0.83	Above hock
F. Teat Place			0	1		+0.95	Close
R. Teat Place			0	1		+0.52	Close
Teat Length			0			-0.88	Short
Teat Sideview			0			+0.31	Apart

Alta UK abide by the ADHB & Holstein UK established code of Advertising. Bulls tested free for genetic recessives will not show these codes for formatting reasons. Prices are subject to change. Terms and conditions apply.

CONFORMATION

Type Merit	0.96	Mammary	1.38
Legs & Feet	0.07	Rel	53%

PRODUCTION (0 UK Daughters in 0 UK Herds)

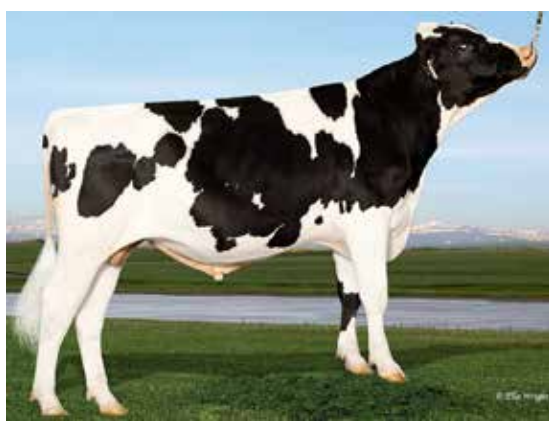
Milk	+776 Kgs	+67% Rel
Protein	+30.6 Kgs	+0.06%
Fat	+40.2 Kgs	+0.10%

HEALTH & MANAGEMENT

Lifespan	137	Ease of Milk	+1.18
Fertility	+10.2	Temperament	+1.0
SCC	-11	Maintenance	-1
MAST	-1	Dairy Carcass	0.1
Calf Survival	+0.7	TB Advantage	3.4 40%
Lameness Advantage	+3.0	Gestation Length	-3 89%
Digital Dermatitis	+0.2	Feed Advantage	+95 45%
Healthy Cow	+221 57%	Enviro Cow	+3.6 66%

CALVING TRAITS

Direct CE	-0.1 +74% Rel	Maternal CE	1.2 +53% Rel
-----------	---------------	-------------	--------------



PLI **+781** Rel 65%

AltaGULLIVER

65003209641634 | HO6752

PEAK ALTAGULLIVER-ET
 PURSUIT X FABULOUS X AltaTOPSHOT
 HO840M003209641634 | DOB 11/27/2019
 aAa 435 | DMS 234,246 | EFI 11.5 %
 Kappa-Casein: AB Beta-Casein: A1A2
 Genetic Codes: TC TD TL TP TR TV TY
 AHDB DAIRY & HOLSTEIN UK 12/2022- GENOMIC



CONFORMATION (0 UK Daughters in 0 UK Herds)

	-2	-1	0	1	2		
Stature			0			+0.34	Tall
Chest Width			0	1		+0.61	Wide
Body Depth			0			+0.25	Deep
Angularity			0	1		+1.55	Open Rib
Rump Angle			0	1		+0.58	Low Pins
Thurl Width			0	1		+0.80	Wide
R. Legs-S View			0			+0.22	Sickled
Foot Angle			0			+0.32	Steep
Locomotion			0	1		+0.97	Excellent
F. Udder Att.			0	1		+0.33	Tight
R. Udder Ht.			0	1		+1.30	Very high
Udder Cleft			0	1		+0.67	Strong
Udder Depth			0			-0.12	Below Hock
F. Teat Place			0			+0.03	Close
R. Teat Place			0			-0.33	Apart
Teat Length			0			-0.36	Short
Teat Sideview			0			+2.07	Apart

Alta UK abide by the ADHB & Holstein UK established code of Advertising. Bulls tested free for genetic recessives will not show these codes for formatting reasons. Prices are subject to change. Terms and conditions apply. Proud to use independent data powered by AHDB Dairy.

CONFORMATION

Type Merit	1.56	Mammary	1.12
Legs & Feet	1.09	Rel	55%

PRODUCTION (0 UK Daughters in 0 UK Herds)

Milk	+878 Kgs	+68% Rel
Protein	+33.3 Kgs	+0.05%
Fat	+44.9 Kgs	+0.11%

HEALTH & MANAGEMENT

Lifespan	143	Ease of Milk	+0.20
Fertility	+2.5	Temperament	+0.7
SCC	-20	Maintenance	4
MAST	-2	Dairy Carcass	1.3
Calf Survival	+1.7	TB Advantage	0.0 43%
Lameness Advantage	+1.0	Gestation Length	-1 99%
Digital Dermatitis	+0.2	Feed Advantage	+96 45%
Healthy Cow	+193 58%	Enviro Cow	+3.9 66%

CALVING TRAITS

Direct CE	-0.3 +74% Rel	Maternal CE	1.4 +53% Rel
-----------	---------------	-------------	--------------



PLI **+503** Rel 65%

AltaHAILED

65003207410295 | HO6526

MATCREST HAILED-ET
 AltaHOTJOB X BURLEY X MONTROSS
 HO840M003207410295 | DOB 5/2/2019
 aAa 423 | DMS 345,135 | EFI 9.8 %
 Kappa-Casein: AA Beta-Casein: A1A2
 Genetic Codes: TC TD TL TP TR TV TY
 AHDB DAIRY & HOLSTEIN UK 12/2022 - GENOMIC



CONFORMATION (0 UK Daughters in 0 UK Herds)

	-2	-1	0	1	2		
Stature						+0.68	Tall
Chest Width						+0.78	Wide
Body Depth						-0.12	Shallow
Angularity						+0.79	Open Rib
Rump Angle						-1.36	High Pins
Thurl Width						+1.04	Wide
R. Legs-S View						+0.27	Sickled
Foot Angle						-0.02	Low
Locomotion						+0.30	Excellent
F. Udder Att.						+1.71	Tight
R. Udder Ht.						+2.34	Very high
Udder Cleft						+1.71	Strong
Udder Depth						+1.23	Above hock
F. Teat Place						+0.13	Close
R. Teat Place						+0.71	Close
Teat Length						0.00	Short
Teat Sideview						+1.38	Apart

Alta UK abide by the ADHB & Holstein UK established code of Advertising. Bulls tested free for genetic recessives will not show these codes for formatting reasons. Prices are subject to change. Terms and conditions apply.

CONFORMATION

Type Merit	1.44	Mammary	2.22
Legs & Feet	0.18	Rel	56%

PRODUCTION (0 UK Daughters in 0 UK Herds)

Milk	+793 Kgs	+68% Rel
Protein	+25.2 Kgs	-0.01%
Fat	+34.4 Kgs	+0.03%

HEALTH & MANAGEMENT

Lifespan	82	Ease of Milk	+1.25
Fertility	+4.3	Temperament	+0.7
SCC	+1	Maintenance	9
MAST	0	Dairy Carcass	1.0
Calf Survival	+0.2	TB Advantage	2.0 48%
Lameness Advantage	+2.0	Gestation Length	-2 99%
Digital Dermatitis	+0.2	Feed Advantage	-27 45%
Healthy Cow	+118 58%	Enviro Cow	+2.2 67%

CALVING TRAITS

Direct CE	0.1 +78% Rel	Maternal CE	0.9 +53% Rel
-----------	--------------	-------------	--------------

AltaIZZA

65003200824743 | HO6305

PEAK ALTAIZZA-ET
 AltaHOTJOB X JEDI X BOMBERO
 HO840M003200824743 | DOB 1/20/2019
 aAa 324 | DMS 561,126 | EFI 11.3 %
 Kappa-Casein: AB Beta-Casein: A1A2
 Genetic Codes: TC TD TL TP TR TV TY
 AHDB DAIRY & HOLSTEIN UK 12/2022 - GENOMIC



CONFORMATION (0 UK Daughters in 0 UK Herds)

	-2	-1	0	1	2		
Stature						+0.97	Tall
Chest Width						+0.82	Wide
Body Depth						+0.49	Deep
Angularity						+0.79	Open Rib
Rump Angle						-0.05	High Pins
Thurl Width						+0.49	Wide
R. Legs-S View						-0.97	Straight
Foot Angle						+0.34	Steep
Locomotion						+0.25	Excellent
F. Udder Att.						+0.92	Tight
R. Udder Ht.						+1.54	Very high
Udder Cleft						+1.10	Strong
Udder Depth						+0.62	Above hock
F. Teat Place						+0.39	Close
R. Teat Place						+0.95	Close
Teat Length						-0.02	Short
Teat Sideview						+1.98	Apart

Alta UK abide by the ADHB & Holstein UK established code of Advertising. Bulls tested free for genetic recessives will not show these codes for formatting reasons. Prices are subject to change. Terms and conditions apply. Proud to use independent data powered by AHDB Dairy.

CONFORMATION

Type Merit	1.07	Mammary	1.68
Legs & Feet	0.29	Rel	57%

PRODUCTION (0 UK Daughters in 0 UK Herds)

Milk	+584 Kgs	+69% Rel
Protein	+29.6 Kgs	+0.12%
Fat	+30.4 Kgs	+0.08%

HEALTH & MANAGEMENT

Lifespan	85	Ease of Milk	+0.73
Fertility	+3.3	Temperament	+0.9
SCC	-11	Maintenance	13
MAST	0	Dairy Carcass	1.3
Calf Survival	-2.9	TB Advantage	0.9 46%
Lameness Advantage	+0.9	Gestation Length	-3 99%
Digital Dermatitis	-0.1	Feed Advantage	-53 45%
Healthy Cow	+86 63%	Enviro Cow	+2.4 67%

CALVING TRAITS

Direct CE	-0.1 +79% Rel	Maternal CE	1.1 +53% Rel
-----------	---------------	-------------	--------------



PLI **+893** Rel 64%

AltaKEVLOW

65003212150639 | HO7217

PEAK ALTAKEVLOW-ET
 AltaPLINKO X MARIUS X DUKE
 HO840M003212150639 | DOB 6/25/2020
 aAa 234 | DMS 123,135 | EFI 11.8 %
 Kappa-Casein: BE Beta-Casein: A1A1
 Genetic Codes: TC TD TL TP TR TV TY
 AHDB DAIRY & HOLSTEIN UK 12/2022- GENOMIC



CONFORMATION (0 UK Daughters in 0 UK Herds)

	-2	-1	0	1	2		
Stature						+0.41	Tall
Chest Width						+0.02	Wide
Body Depth						-0.24	Shallow
Angularity						+1.10	Open Rib
Rump Angle						-0.07	High Pins
Thurl Width						+0.93	Wide
R. Legs-S View						-0.08	Straight
Foot Angle						+0.45	Steep
Locomotion						-0.09	Poor
F. Udder Att.						+0.84	Tight
R. Udder Ht.						+0.77	Very high
Udder Cleft						+0.44	Strong
Udder Depth						+0.60	Above hock
F. Teat Place						+0.12	Close
R. Teat Place						+0.25	Close
Teat Length						-0.46	Short
Teat Sideview						+0.89	Apart

Alta UK abide by the ADHB & Holstein UK established code of Advertising. Bulls tested free for genetic recessives will not show these codes for formatting reasons. Prices are subject to change. Terms and conditions apply.

CONFORMATION

Type Merit	0.81	Mammary	1.03
Legs & Feet	0.11	Rel	53%

PRODUCTION (0 UK Daughters in 0 UK Herds)

Milk	+1031 Kgs	+67% Rel
Protein	+43.3 Kgs	+0.10%
Fat	+57.6 Kgs	+0.18%

HEALTH & MANAGEMENT

Lifespan	55	Ease of Milk	-0.13
Fertility	+3.8	Temperament	+1.0
SCC	-17	Maintenance	2
MAST	-1	Dairy Carcass	1.1
Calf Survival	-0.5	TB Advantage	1.1 40%
Lameness Advantage	+1.7	Gestation Length	-4 54%
Digital Dermatitis	+0.1	Feed Advantage	+123 45%
Healthy Cow	+118 57%	Enviro Cow	+4.3 66%

CALVING TRAITS

Direct CE	0.0 +69% Rel	Maternal CE	1.1 +53% Rel
-----------	--------------	-------------	--------------



PLI **+710** Rel 63%

AltaLIENONME

65003215425732 | HO7096

PEAK ALTALIENONME-ET
 AltaTIKI X POSITIVE X JEDI
 HO840M003215425732 | DOB 8/13/2020
 aAa 234 | DMS 234,345 | EFI 11.7 %
 Kappa-Casein: AB Beta-Casein: A1A2
 Genetic Codes: TC TD TL TR TV TY
 AHDB DAIRY & HOLSTEIN UK 12/2022- GENOMIC



CONFORMATION (0 UK Daughters in 0 UK Herds)

	-2	-1	0	1	2		
Stature						-0.29	Short
Chest Width						+1.03	Wide
Body Depth						-0.29	Shallow
Angularity						+0.65	Open Rib
Rump Angle						+0.26	Low Pins
Thurl Width						+0.51	Wide
R. Legs-S View						+0.54	Sickled
Foot Angle						-0.49	Low
Locomotion						+0.24	Excellent
F. Udder Att.						+1.32	Tight
R. Udder Ht.						+1.30	Very high
Udder Cleft						-0.01	Broken
Udder Depth						+0.77	Above hock
F. Teat Place						+0.15	Close
R. Teat Place						+0.56	Close
Teat Length						+0.02	Long
Teat Sideview						+0.16	Apart

Alta UK abide by the ADHB & Holstein UK established code of Advertising. Bulls tested free for genetic recessives will not show these codes for formatting reasons. Prices are subject to change. Terms and conditions apply. Proud to use independent data powered by AHDB Dairy.

CONFORMATION

Type Merit	1.23	Mammary	1.42
Legs & Feet	0.10	Rel	53%

PRODUCTION (0 UK Daughters in 0 UK Herds)

Milk	+911 Kgs	+67% Rel
Protein	+35.6 Kgs	+0.06%
Fat	+43.5 Kgs	+0.08%

HEALTH & MANAGEMENT

Lifespan	92	Ease of Milk	+1.33
Fertility	+2.0	Temperament	+0.8
SCC	-10	Maintenance	2
MAST	0	Dairy Carcass	0.7
Calf Survival	+1.3	TB Advantage	2.6 40%
Lameness Advantage	+1.3	Gestation Length	-3 55%
Digital Dermatitis	-0.1	Feed Advantage	+52 45%
Healthy Cow	+122 57%	Enviro Cow	+3.4 66%

CALVING TRAITS

Direct CE	0.3 +64% Rel	Maternal CE	1.5 +53% Rel
-----------	--------------	-------------	--------------



PLI **+900** Rel 63%

AltaLINGUIST

65003215425475 | HO7292

PEAK ALTALINGUIST-ET
 AltaZAZZLE X POSITIVE X JEDI
 HO840M003215425475 | DOB 5/12/2020
 aAa 243 | DMS 135,561 | EFI 11.0 %
 Kappa-Casein: BB Beta-Casein: A1A2
 Haplotype: HH6C | Genetic Codes: TC TD TL TP TR TV TY
 AHDB DAIRY & HOLSTEIN UK 12/2022- GENOMIC



CONFORMATION (0 UK Daughters in 0 UK Herds)

	-2	-1	0	1	2		
Stature						-1.15	Short
Chest Width						-1.37	Narrow
Body Depth						-1.54	Shallow
Angularity						+0.59	Open Rib
Rump Angle						+0.76	Low Pins
Thurl Width						-1.05	Narrow
R. Legs-S View						-0.44	Straight
Foot Angle						-0.11	Low
Locomotion						+0.18	Excellent
F. Udder Att.						+0.62	Tight
R. Udder Ht.						+0.41	Very high
Udder Cleft						+0.18	Strong
Udder Depth						+0.16	Above hock
F. Teat Place						+1.14	Close
R. Teat Place						+0.11	Close
Teat Length						-1.61	Short
Teat Sideview						-0.40	Close

Alta UK abide by the ADHB & Holstein UK established code of Advertising. Bulls tested free for genetic recessives will not show these codes for formatting reasons. Prices are subject to change. Terms and conditions apply.

CONFORMATION

Type Merit	0.52	Mammary	0.81
Legs & Feet	0.22	Rel	53%

PRODUCTION (0 UK Daughters in 0 UK Herds)

Milk	+823 Kgs	+67% Rel
Protein	+35.2 Kgs	+0.09%
Fat	+52.1 Kgs	+0.21%

HEALTH & MANAGEMENT

Lifespan	116	Ease of Milk	+1.05
Fertility	+7.1	Temperament	+0.7
SCC	-9	Maintenance	-21
MAST	0	Dairy Carcass	0.2
Calf Survival	+1.7	TB Advantage	1.5 40%
Lameness Advantage	+2.9	Gestation Length	-1 55%
Digital Dermatitis	+0.3	Feed Advantage	+223 45%
Healthy Cow	+183 57%	Enviro Cow	+4.6 66%

CALVING TRAITS

Direct CE	0.4 +64% Rel	Maternal CE	1.3 +53% Rel
-----------	--------------	-------------	--------------



PLI **+831** Rel 63%

AltaLUMIFY

65003215425429 | HO7009

PEAK ALTALUMIFY-ET
 AltaZAZZLE X POSITIVE X JEDI
 HO840M003215425429 | DOB 4/25/2020
 aAa 234 | DMS 234,123 | EFI 11.5 %
 Kappa-Casein: AB Beta-Casein: A1A2
 Haplotype: HH6C | Genetic Codes: TC TD TL TP TR TV TY
 AHDB DAIRY & HOLSTEIN UK 12/2022- GENOMIC



CONFORMATION (0 UK Daughters in 0 UK Herds)

	-2	-1	0	1	2		
Stature						-0.08	Short
Chest Width						-0.67	Narrow
Body Depth						-0.47	Shallow
Angularity						+1.74	Open Rib
Rump Angle						+0.66	Low Pins
Thurl Width						-0.14	Narrow
R. Legs-S View						+0.18	Sickled
Foot Angle						+0.36	Steep
Locomotion						-0.24	Poor
F. Udder Att.						+1.33	Tight
R. Udder Ht.						+1.40	Very high
Udder Cleft						+0.55	Strong
Udder Depth						+0.69	Above hock
F. Teat Place						+1.02	Close
R. Teat Place						+0.92	Close
Teat Length						-1.26	Short
Teat Sideview						+0.26	Apart

Alta UK abide by the ADHB & Holstein UK established code of Advertising. Bulls tested free for genetic recessives will not show these codes for formatting reasons. Prices are subject to change. Terms and conditions apply. Proud to use independent data powered by AHDB Dairy.

CONFORMATION

Type Merit	1.32	Mammary	1.54
Legs & Feet	0.05	Rel	53%

PRODUCTION (0 UK Daughters in 0 UK Herds)

Milk	+902 Kgs	+67% Rel
Protein	+33.9 Kgs	+0.05%
Fat	+58.7 Kgs	+0.25%

HEALTH & MANAGEMENT

Lifespan	85	Ease of Milk	+1.13
Fertility	+2.5	Temperament	+1.2
SCC	-17	Maintenance	-8
MAST	-1	Dairy Carcass	0.7
Calf Survival	+1.7	TB Advantage	1.8 40%
Lameness Advantage	+1.7	Gestation Length	-2 55%
Digital Dermatitis	+0.1	Feed Advantage	+157 45%
Healthy Cow	+147 57%	Enviro Cow	+4.1 66%

CALVING TRAITS

Direct CE	-0.4 +64% Rel	Maternal CE	1.1 +53% Rel
-----------	---------------	-------------	--------------



PLI **+700** Rel 64%

AltaMAGNIFIQUE

65003213001110 | HO6776

PEAK ALTAMAGNIFIQUE-ET
 MAESTRO X POSITIVE X MEDLEY
 HO840M003213001110 | DOB 1/20/2020
 aAa 423 | DMS 123,126 | EFI 10.9 %
 Kappa-Casein: AB Beta-Casein: A1A2
 Genetic Codes: TC TD TL TP TR TV TY
 AHDB DAIRY & HOLSTEIN UK 12/2022- GENOMIC



CONFORMATION (0 UK Daughters in 0 UK Herds)

	-2	-1	0	1	2		
Stature						+0.57	Tall
Chest Width						+1.77	Wide
Body Depth						+0.90	Deep
Angularity						+0.25	Open Rib
Rump Angle						+2.33	Low Pins
Thurl Width						+1.61	Wide
R. Legs-S View						-0.15	Straight
Foot Angle						+0.80	Steep
Locomotion						+0.43	Excellent
F. Udder Att.						+1.19	Tight
R. Udder Ht.						+0.35	Very high
Udder Cleft						+0.22	Strong
Udder Depth						+0.47	Above hock
F. Teat Place						+1.99	Close
R. Teat Place						+2.03	Close
Teat Length						-1.88	Short
Teat Sideview						+0.33	Apart

Alta UK abide by the ADHB & Holstein UK established code of Advertising. Bulls tested free for genetic recessives will not show these codes for formatting reasons. Prices are subject to change. Terms and conditions apply.

CONFORMATION

Type Merit	0.99	Mammary	1.00
Legs & Feet	0.64	Rel	55%

PRODUCTION (0 UK Daughters in 0 UK Herds)

Milk	+525 Kgs	+67% Rel
Protein	+28.0 Kgs	+0.12%
Fat	+42.2 Kgs	+0.24%

HEALTH & MANAGEMENT

Lifespan	98	Ease of Milk	+0.95
Fertility	+8.0	Temperament	+0.5
SCC	-11	Maintenance	16
MAST	-1	Dairy Carcass	1.1
Calf Survival	+0.2	TB Advantage	2.3 43%
Lameness Advantage	+0.5	Gestation Length	-1 95%
Digital Dermatitis	-0.1	Feed Advantage	+30 45%
Healthy Cow	+167 56%	Enviro Cow	+3.2 65%

CALVING TRAITS

Direct CE	0.1 +77% Rel	Maternal CE	1.3 +53% Rel
-----------	--------------	-------------	--------------



PLI **+810** Rel 63%

AltaMAMADI

65003224928456



PEAK ALTAMAMADI-ET
 AltaMAGNIFIQUE X AltaZAZZLE X AltaEXPLOSION
 HO840M003224928456 | DOB 8/17/2021
 aAa 243 | DMS 561,126 | EFI 10.8 %
 Kappa-Casein: AB Beta-Casein: A1A2
 Genetic Codes: TC TD TL TV TY
 AHDB DAIRY & HOLSTEIN UK 12/2022- GENOMIC



CONFORMATION (0 UK Daughters in 0 UK Herds)

	-2	-1	0	1	2		
Stature						-0.69	Short
Chest Width						+0.44	Wide
Body Depth						-1.12	Shallow
Angularity						-1.22	Coarse
Rump Angle						-0.43	High Pins
Thurl Width						-0.01	Narrow
R. Legs-S View						+0.18	Sickled
Foot Angle						+0.07	Steep
Locomotion						-0.24	Poor
F. Udder Att.						+1.76	Tight
R. Udder Ht.						-0.16	Very Low
Udder Cleft						-0.09	Broken
Udder Depth						+1.25	Above hock
F. Teat Place						+0.76	Close
R. Teat Place						+1.11	Close
Teat Length						-0.82	Short
Teat Sideview						-0.45	Close

Alta UK abide by the ADHB & Holstein UK established code of Advertising. Bulls tested free for genetic recessives will not show these codes for formatting reasons. Prices are subject to change. Terms and conditions apply. Proud to use independent data powered by AHDB Dairy.

CONFORMATION

Type Merit	0.12	Mammary	1.03
Legs & Feet	-0.39	Rel	53%

PRODUCTION (0 UK Daughters in 0 UK Herds)

Milk	+266 Kgs	+66% Rel
Protein	+25.9 Kgs	+0.20%
Fat	+39.5 Kgs	+0.34%

HEALTH & MANAGEMENT

Lifespan	125	Ease of Milk	-0.55
Fertility	+13.3	Temperament	+0.2
SCC	-24	Maintenance	-2
MAST	-3	Dairy Carcass	0.8
Calf Survival	+0.7	TB Advantage	0.2 40%
Lameness Advantage	+0.8	Gestation Length	-2 55%
Digital Dermatitis	-0.1	Feed Advantage	+76 45%
Healthy Cow	+256 56%	Enviro Cow	+3.6 65%

CALVING TRAITS

Direct CE	0.2 +63% Rel	Maternal CE	1.0 +53% Rel
-----------	--------------	-------------	--------------



PLI **+912** Rel 64%

AltaMORPHEUS

NEW

65003235933250

PEAK ALTAMORPHEUS-ET
 CURFEW X CRIMSON X FRAZZLED
 H0840M003235933250 | DOB 10/25/2021
 aAa 426 | DMS 345,135 | EFI 11.1 %
 Kappa-Casein: AB Beta-Casein: A2A2
 Haplotype: HCDC | Genetic Codes: CD TD TL TV TY
 AHDB DAIRY & HOLSTEIN UK 12/2022- GENOMIC



CONFORMATION (0 UK Daughters in 0 UK Herds)

	-2	-1	0	1	2		
Stature						-1.45	Short
Chest Width						+0.52	Wide
Body Depth						-1.01	Shallow
Angularity						-1.07	Coarse
Rump Angle						-1.84	High Pins
Thurl Width						-1.77	Narrow
R. Legs-S View						+0.08	Sickled
Foot Angle						-0.67	Low
Locomotion						+0.58	Excellent
F. Udder Att.						-0.24	Loose
R. Udder Ht.						-0.33	Very Low
Udder Cleft						-0.02	Broken
Udder Depth						-0.57	Below Hock
F. Teat Place						-0.12	Outside
R. Teat Place						+0.20	Close
Teat Length						-1.02	Short
Teat Sideview						+1.07	Apart

Alta UK abide by the ADHB & Holstein UK established code of Advertising. Bulls tested free for genetic recessives will not show these codes for formatting reasons. Prices are subject to change. Terms and conditions apply.

CONFORMATION

Type Merit	0.10	Mammary	0.26
Legs & Feet	0.43	Rel	54%

PRODUCTION (0 UK Daughters in 0 UK Herds)

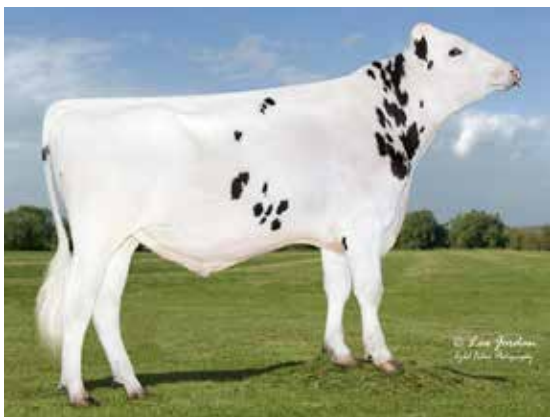
Milk	+702 Kgs	+67% Rel
Protein	+29.5 Kgs	+0.07%
Fat	+47.2 Kgs	+0.21%

HEALTH & MANAGEMENT

Lifespan	183	Ease of Milk	+0.13
Fertility	+11.3	Temperament	-0.2
SCC	-23	Maintenance	-9
MAST	-2	Dairy Carcass	1.8
Calf Survival	+3.3	TB Advantage	2.3 45%
Lameness Advantage	+2.2	Gestation Length	-2 49%
Digital Dermatitis	+0.4	Feed Advantage	+133 45%
Healthy Cow	+303 57%	Enviro Cow	+4.3 66%

CALVING TRAITS

Direct CE	1.2 +63% Rel	Maternal CE	1.4 +53% Rel
-----------	--------------	-------------	--------------



PLI **+859** Rel 64%

AltaOVERTAKE

NEW

65003214324409 | H07218

LADYS-MANOR ALTAOVERTAKE-ET
 AltaZAZZLE X GRANITE X MILLINGTON
 H0840M003214324409 | DOB 11/3/2020
 aAa 342 | DMS 246,126 | EFI 11.5 %
 Kappa-Casein: BB Beta-Casein: A1A2
 Genetic Codes: TC TD TL TV TY
 AHDB DAIRY & HOLSTEIN UK 12/2022- GENOMIC



CONFORMATION (0 UK Daughters in 0 UK Herds)

	-2	-1	0	1	2		
Stature						-0.50	Short
Chest Width						+0.06	Wide
Body Depth						-0.81	Shallow
Angularity						+0.01	Open Rib
Rump Angle						+0.01	Low Pins
Thurl Width						+0.76	Wide
R. Legs-S View						-0.78	Straight
Foot Angle						+0.17	Steep
Locomotion						+0.42	Excellent
F. Udder Att.						+1.20	Tight
R. Udder Ht.						+1.13	Very high
Udder Cleft						+0.51	Strong
Udder Depth						+0.71	Above hock
F. Teat Place						+1.01	Close
R. Teat Place						+0.95	Close
Teat Length						+0.40	Long
Teat Sideview						+0.38	Apart

Alta UK abide by the ADHB & Holstein UK established code of Advertising. Bulls tested free for genetic recessives will not show these codes for formatting reasons. Prices are subject to change. Terms and conditions apply. Proud to use independent data powered by AHDB Dairy.

CONFORMATION

Type Merit	1.09	Mammary	1.44
Legs & Feet	0.55	Rel	54%

PRODUCTION (0 UK Daughters in 0 UK Herds)

Milk	+789 Kgs	+67% Rel
Protein	+32.2 Kgs	+0.07%
Fat	+46.4 Kgs	+0.16%

HEALTH & MANAGEMENT

Lifespan	134	Ease of Milk	+0.19
Fertility	+8.3	Temperament	-0.4
SCC	-20	Maintenance	-5
MAST	-2	Dairy Carcass	0.5
Calf Survival	+1.1	TB Advantage	2.8 42%
Lameness Advantage	+2.5	Gestation Length	-1 55%
Digital Dermatitis	+0.5	Feed Advantage	+133 45%
Healthy Cow	+240 58%	Enviro Cow	+4.0 66%

CALVING TRAITS

Direct CE	0.4 +64% Rel	Maternal CE	1.2 +53% Rel
-----------	--------------	-------------	--------------



PLI **+818** Rel 65%

AltaPLINKO

65003200824505 | HO6125

PEAK ALTAPLINKO-ET
 MARIUS X AltaTOPSHOT X YODER
 HO840M003200824505 | DOB 10/17/2018
 aAa 423 | DMS 345,234 | EFI 12.0 %
 Kappa-Casein: AB Beta-Casein: A1A2
 Genetic Codes: TC TD TL TP TR TV TY
 AHDB DAIRY & HOLSTEIN UK 12/2022- GENOMIC



CONFORMATION (0 UK Daughters in 0 UK Herds)

	-2	-1	0	1	2		
Stature						-0.20	Short
Chest Width						-0.75	Narrow
Body Depth						-0.88	Shallow
Angularity						+0.64	Open Rib
Rump Angle						+0.99	Low Pins
Thurl Width						-0.07	Narrow
R. Legs-S View						+0.20	Sickled
Foot Angle						-0.24	Low
Locomotion						+0.15	Excellent
F. Udder Att.						-0.30	Loose
R. Udder Ht.						+0.28	Very high
Udder Cleft						0.00	Broken
Udder Depth						-0.53	Below Hock
F. Teat Place						-0.93	Outside
R. Teat Place						-0.15	Apart
Teat Length						+0.62	Long
Teat Sideview						+0.67	Apart

Alta UK abide by the ADHB & Holstein UK established code of Advertising. Bulls tested free for genetic recessives will not show these codes for formatting reasons. Prices are subject to change. Terms and conditions apply.

CONFORMATION

Type Merit	0.17	Mammary	0.04
Legs & Feet	0.18	Rel	56%

PRODUCTION (0 UK Daughters in 0 UK Herds)

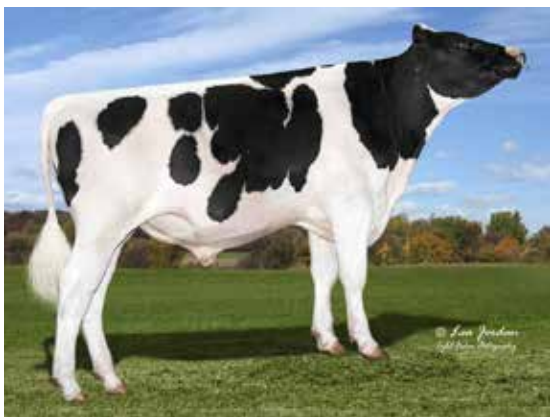
Milk	+1035 Kgs	+68% Rel
Protein	+41.8 Kgs	+0.08%
Fat	+48.3 Kgs	+0.07%

HEALTH & MANAGEMENT

Lifespan	52	Ease of Milk	+0.15
Fertility	+4.8	Temperament	+0.5
SCC	-13	Maintenance	-8
MAST	0	Dairy Carcass	1.3
Calf Survival	-1.0	TB Advantage	-0.3 44%
Lameness Advantage	+2.1	Gestation Length	-5 99%
Digital Dermatitis	+0.2	Feed Advantage	+150 45%
Healthy Cow	+99 63%	Enviro Cow	+4.0 67%

CALVING TRAITS

Direct CE	0.8 +75% Rel	Maternal CE	1.0 +53% Rel
-----------	--------------	-------------	--------------



PLI **+789** Rel 63%

AltaPOWERBUCK

65003213001199 | HO7219

PEAK ALTAPOWERBUCK-ET
 AltaTIKI X PURSUIT X MEDLEY
 HO840M003213001199 | DOB 9/12/2020
 aAa 432 | DMS 246,234 | EFI 11.4 %
 Kappa-Casein: AB Beta-Casein: A1A2
 Genetic Codes: TC TD TL TV TY
 AHDB DAIRY & HOLSTEIN UK 12/2022- GENOMIC



CONFORMATION (0 UK Daughters in 0 UK Herds)

	-2	-1	0	1	2		
Stature						-0.43	Short
Chest Width						+1.65	Wide
Body Depth						-0.55	Shallow
Angularity						-0.10	Coarse
Rump Angle						+0.35	Low Pins
Thurl Width						+0.66	Wide
R. Legs-S View						-0.37	Straight
Foot Angle						+0.39	Steep
Locomotion						+0.93	Excellent
F. Udder Att.						+1.26	Tight
R. Udder Ht.						+1.25	Very high
Udder Cleft						+0.33	Strong
Udder Depth						+0.82	Above hock
F. Teat Place						+0.12	Close
R. Teat Place						-0.11	Apart
Teat Length						+0.20	Long
Teat Sideview						+0.68	Apart

Alta UK abide by the ADHB & Holstein UK established code of Advertising. Bulls tested free for genetic recessives will not show these codes for formatting reasons. Prices are subject to change. Terms and conditions apply. Proud to use independent data powered by AHDB Dairy.

CONFORMATION

Type Merit	1.65	Mammary	1.64
Legs & Feet	1.05	Rel	53%

PRODUCTION (0 UK Daughters in 0 UK Herds)

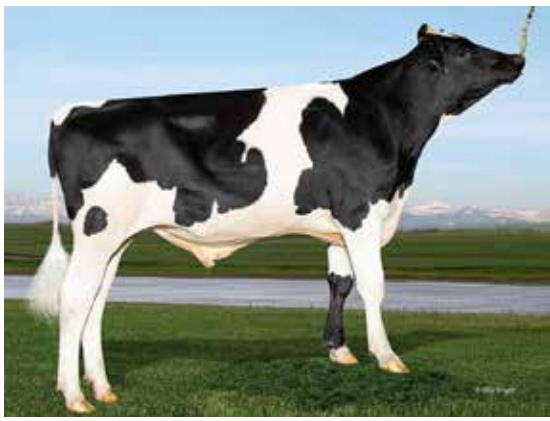
Milk	+1083 Kgs	+67% Rel
Protein	+32.7 Kgs	-0.03%
Fat	+35.6 Kgs	-0.08%

HEALTH & MANAGEMENT

Lifespan	180	Ease of Milk	+0.62
Fertility	+9.6	Temperament	+0.6
SCC	-25	Maintenance	6
MAST	-3	Dairy Carcass	1.9
Calf Survival	+1.2	TB Advantage	1.4 40%
Lameness Advantage	+1.7	Gestation Length	-2 55%
Digital Dermatitis	+0.1	Feed Advantage	+47 45%
Healthy Cow	+292 57%	Enviro Cow	+3.5 65%

CALVING TRAITS

Direct CE	0.1 +64% Rel	Maternal CE	1.3 +53% Rel
-----------	--------------	-------------	--------------



PLI **+795** Rel 64%

AltaREGULUS

65003212150609 | HO6888

WINSTAR ALTAREGULUS-ET
 AltaZAZZLE X CRIMSON X JEDI
 HO840M003212150609 | DOB 6/6/2020
 aAa 423 | DMS 345,234 | EFI 11.6 %
 Kappa-Casein: BB Beta-Casein: A2A2
 Genetic Codes: TC TD TL TP TR TV TY
 AHDB DAIRY & HOLSTEIN UK 12/2022- GENOMIC



CONFORMATION (0 UK Daughters in 0 UK Herds)

	-2	-1	0	1	2		
Stature						+0.47	Tall
Chest Width						+0.52	Wide
Body Depth						-0.25	Shallow
Angularity						+0.32	Open Rib
Rump Angle						+0.59	Low Pins
Thurl Width						+0.71	Wide
R. Legs-S View						-0.31	Straight
Foot Angle						+0.39	Steep
Locomotion						-0.48	Poor
F. Udder Att.						+0.98	Tight
R. Udder Ht.						+0.33	Very high
Udder Cleft						+0.13	Strong
Udder Depth						+1.16	Above hock
F. Teat Place						+0.77	Close
R. Teat Place						+0.59	Close
Teat Length						-0.07	Short
Teat Sideview						+0.39	Apart

Alta UK abide by the ADHB & Holstein UK established code of Advertising. Bulls tested free for genetic recessives will not show these codes for formatting reasons. Prices are subject to change. Terms and conditions apply.

CONFORMATION

Type Merit	0.46	Mammary	1.09
Legs & Feet	-0.35	Rel	54%

PRODUCTION (0 UK Daughters in 0 UK Herds)

Milk	+538 Kgs	+67% Rel
Protein	+29.6 Kgs	+0.13%
Fat	+52.2 Kgs	+0.35%

HEALTH & MANAGEMENT

Lifespan	107	Ease of Milk	+0.74
Fertility	+5.9	Temperament	+0.4
SCC	-19	Maintenance	7
MAST	-1	Dairy Carcass	1.5
Calf Survival	+1.8	TB Advantage	0.5 42%
Lameness Advantage	+2.6	Gestation Length	-2 94%
Digital Dermatitis	+0.1	Feed Advantage	+55 45%
Healthy Cow	+183 58%	Enviro Cow	+3.7 66%

CALVING TRAITS

Direct CE	-0.7 +68% Rel	Maternal CE	1.4 +54% Rel
-----------	---------------	-------------	--------------



PLI **+811** Rel 63%

AltaROZEBOOM

65003228352473

PEAK ALTAROZEBOOM-ET
 BREAKDOWN X PURSUIT X AltaROBSON
 HO840M003228352473 | DOB 5/10/2021
 aAa 342 | DMS 345,135 | EFI 11.5 %
 Kappa-Casein: AB Beta-Casein: A2A2
 Genetic Codes: TC TD TL TV TY
 AHDB DAIRY & HOLSTEIN UK 12/2022- GENOMIC



CONFORMATION (0 UK Daughters in 0 UK Herds)

	-2	-1	0	1	2		
Stature						+0.12	Tall
Chest Width						+0.29	Wide
Body Depth						+0.07	Deep
Angularity						+0.98	Open Rib
Rump Angle						+0.29	Low Pins
Thurl Width						+0.68	Wide
R. Legs-S View						-0.19	Straight
Foot Angle						+0.10	Steep
Locomotion						+0.82	Excellent
F. Udder Att.						+0.75	Tight
R. Udder Ht.						+0.68	Very high
Udder Cleft						+0.76	Strong
Udder Depth						+0.21	Above hock
F. Teat Place						+0.48	Close
R. Teat Place						+0.48	Close
Teat Length						-0.73	Short
Teat Sideview						+1.41	Apart

Alta UK abide by the ADHB & Holstein UK established code of Advertising. Bulls tested free for genetic recessives will not show these codes for formatting reasons. Prices are subject to change. Terms and conditions apply. Proud to use independent data powered by AHDB Dairy.

CONFORMATION

Type Merit	1.24	Mammary	1.04
Legs & Feet	0.78	Rel	53%

PRODUCTION (0 UK Daughters in 0 UK Herds)

Milk	+638 Kgs	+67% Rel
Protein	+32.3 Kgs	+0.13%
Fat	+42.6 Kgs	+0.19%

HEALTH & MANAGEMENT

Lifespan	119	Ease of Milk	+0.97
Fertility	+9.1	Temperament	+0.8
SCC	-20	Maintenance	1
MAST	-1	Dairy Carcass	1.0
Calf Survival	+1.3	TB Advantage	1.3 43%
Lameness Advantage	+2.2	Gestation Length	-1 49%
Digital Dermatitis	+0.3	Feed Advantage	+59 45%
Healthy Cow	+225 56%	Enviro Cow	+3.6 65%

CALVING TRAITS

Direct CE	-0.1 +63% Rel	Maternal CE	1.1 +53% Rel
-----------	---------------	-------------	--------------



PLI **+834** Rel 63%

AltaSANDRO

NEW

011H015987

CHERRYPCOL ALTASANDRO-ET
AltaZAZZLE X LEGACY X JEDI
HO840M003217140957 | DOB 12/20/2020
aAa 216 | DMS 135,561 | EFI 11.60 %
Kappa-Casein AB | Beta-Casein A2A2
Haplotype: HH6C | Genetic Codes TC TD TL TV TY
AHDB Dairy & Holstein UK 12/2022 - GENOMIC



CONFORMATION (0 UK Daughters in 0 UK Herds)

	-2	-1	0	1	2	
Stature						-0.28 Short
Chest Width						-0.62 Narrow
Body Depth						-0.80 Shallow
Angularity						+1.09 Open Rib
Rump Angle						+0.16 Low Pins
Thurl Width						+1.29 Wide
R. Legs-S View						+0.69 Sickled
Foot Angle						-0.96 Low
Locomotion						-0.40 Poor
F. Udder Att.						+1.59 Tight
R. Udder Ht.						+0.84 Very high
Udder Cleft						+0.16 Strong
Udder Depth						+1.20 Above hock
F. Teat Place						+0.66 Close
R. Teat Place						+0.13 Close
Teat Length						-1.72 Short
Teat Sideview						+0.37 Apart

Alta UK abide by the ADHB & Holstein UK established code of Advertising. Bulls tested free for genetic recessives will not show these codes for formatting reasons. Prices are subject to change. Terms and conditions apply.

CONFORMATION

Type Merit	+0.91	Mammary	+1.40
Legs & Feet	-0.28	Rel	53%

PRODUCTION (0 UK Daughters in 0 UK Herds)

Milk	+989 Kgs	67% Rel
Protein	+33.4 Kgs	+0.01%
Fat	+43.8 Kgs	+0.04%

HEALTH & MANAGEMENT

Lifespan	149	Ease of Milk	+1.15
Fertility	+8.1	Temperament	+3
SCC	-20	Maintenance	-9
Mastitis	-1	Dairy Carcass	+0.7
Calf Survival	+1.7	TB Advantage	1.8 40%
Lameness Advantage	+2.5	Gestation Length	-2 54%
Digital Dermatitis	+0.1	Feed Advantage	+185 45%
Healthy Cow	+228 57%	Enviro Cow	+4.2 65%

CALVING TRAITS

Direct CE	0.1 64% Rel	Maternal CE	1.0 53% Rel
-----------	-------------	-------------	-------------



PLI **+922** Rel 64%

AltaSEVERUS

65003224956127 | H07221

PEAK ALTASEVERUS-ET
AltaPLINKO X CRIMSON X DUKE
HO840M003224956127 | DOB 2/8/2021
aAa 324 | DMS 345,456 | EFI 11.1 %
Kappa-Casein: AB Beta-Casein: A2A2
Genetic Codes: TC TD TL TV TY
AHDB DAIRY & HOLSTEIN UK 12/2022 - GENOMIC



CONFORMATION (0 UK Daughters in 0 UK Herds)

	-2	-1	0	1	2	
Stature						-0.09 Short
Chest Width						+0.03 Wide
Body Depth						-0.54 Shallow
Angularity						+0.29 Open Rib
Rump Angle						+2.14 Low Pins
Thurl Width						-0.19 Narrow
R. Legs-S View						+0.27 Sickled
Foot Angle						+0.52 Steep
Locomotion						-0.21 Poor
F. Udder Att.						-0.29 Loose
R. Udder Ht.						-1.07 Very Low
Udder Cleft						-0.37 Broken
Udder Depth						-0.17 Below Hock
F. Teat Place						-0.37 Outside
R. Teat Place						+0.13 Close
Teat Length						+0.13 Long
Teat Sideview						0.00 Close

Alta UK abide by the ADHB & Holstein UK established code of Advertising. Bulls tested free for genetic recessives will not show these codes for formatting reasons. Prices are subject to change. Terms and conditions apply. Proud to use independent data powered by AHDB Dairy.

CONFORMATION

Type Merit	-0.11	Mammary	-0.23
Legs & Feet	-0.15	Rel	54%

PRODUCTION (0 UK Daughters in 0 UK Herds)

Milk	+906 Kgs	+67% Rel
Protein	+37.7 Kgs	+0.09%
Fat	+44.8 Kgs	+0.09%

HEALTH & MANAGEMENT

Lifespan	156	Ease of Milk	-0.57
Fertility	+14.8	Temperament	+0.5
SCC	-23	Maintenance	-1
MAST	-2	Dairy Carcass	1.3
Calf Survival	-0.4	TB Advantage	1.7 41%
Lameness Advantage	+1.8	Gestation Length	-3 55%
Digital Dermatitis	+0.1	Feed Advantage	+142 45%
Healthy Cow	+255 57%	Enviro Cow	+4.5 66%

CALVING TRAITS

Direct CE	0.3 +63% Rel	Maternal CE	1.4 +53% Rel
-----------	--------------	-------------	--------------



PLI **+844** Rel 64%

AltaSOLACE

65003224956159 | H07373

PEAK ALTASOLACE-ET
 AltaPLINKO X CRIMSON X DUKE
 H0840M003224956159 | DOB 2/13/2021
 aAa 423 | DMS 345,234 | EFI 11.7 %
 Kappa-Casein: AB Beta-Casein: A1A1
 Genetic Codes: TC TD TL TV TY
 AHDB DAIRY & HOLSTEIN UK 12/2022- GENOMIC



CONFORMATION (0 UK Daughters in 0 UK Herds)

	-2	-1	0	1	2		
Stature						+0.42	Tall
Chest Width						+1.23	Wide
Body Depth						-0.47	Shallow
Angularity						-0.73	Coarse
Rump Angle						+1.86	Low Pins
Thurl Width						+0.28	Wide
R. Legs-S View						-1.17	Straight
Foot Angle						+0.47	Steep
Locomotion						-0.17	Poor
F. Udder Att.						+1.01	Tight
R. Udder Ht.						+0.04	Very high
Udder Cleft						+0.96	Strong
Udder Depth						+1.17	Above hock
F. Teat Place						+0.36	Close
R. Teat Place						+1.58	Close
Teat Length						-0.39	Short
Teat Sideview						+0.47	Apart

Alta UK abide by the ADHB & Holstein UK established code of Advertising. Bulls tested free for genetic recessives will not show these codes for formatting reasons. Prices are subject to change. Terms and conditions apply.

CONFORMATION

Type Merit	0.34	Mammary	1.12
Legs & Feet	-0.26	Rel	54%

PRODUCTION (0 UK Daughters in 0 UK Herds)

Milk	+702 Kgs	+67% Rel
Protein	+31.7 Kgs	+0.10%
Fat	+41.8 Kgs	+0.15%

HEALTH & MANAGEMENT

Lifespan	137	Ease of Milk	-0.64
Fertility	+15.0	Temperament	+0.3
SCC	-29	Maintenance	13
MAST	-3	Dairy Carcass	1.8
Calf Survival	+0.4	TB Advantage	0.4 41%
Lameness Advantage	+1.8	Gestation Length	-2 55%
Digital Dermatitis		Feed Advantage	+16 45%
Healthy Cow	+290 57%	Enviro Cow	+3.5 66%

CALVING TRAITS

Direct CE	0.1 +63% Rel	Maternal CE	1.1 +53% Rel
-----------	--------------	-------------	--------------



PLI **+724** Rel 63%

AltaSONADOR

65003224956562

PEAK ALTASONADOR-ET
 AltaJUMP CUT X PURSUIT X MEDLEY
 H0840M003224956562 | DOB 6/5/2021
 aAa 432 | DMS 345,456 | EFI 11.4 %
 Kappa-Casein: AB Beta-Casein: A2A2
 Genetic Codes: TC TD TL TV TY
 AHDB DAIRY & HOLSTEIN UK 12/2022- GENOMIC



CONFORMATION (0 UK Daughters in 0 UK Herds)

	-2	-1	0	1	2		
Stature						+0.47	Tall
Chest Width						+1.39	Wide
Body Depth						+0.75	Deep
Angularity						+0.54	Open Rib
Rump Angle						+0.24	Low Pins
Thurl Width						+0.38	Wide
R. Legs-S View						+1.04	Sickled
Foot Angle						-0.46	Low
Locomotion						+0.35	Excellent
F. Udder Att.						-0.34	Loose
R. Udder Ht.						+0.53	Very high
Udder Cleft						+0.28	Strong
Udder Depth						-0.28	Below Hock
F. Teat Place						-0.05	Outside
R. Teat Place						+0.03	Close
Teat Length						-0.08	Short
Teat Sideview						+1.30	Apart

Alta UK abide by the ADHB & Holstein UK established code of Advertising. Bulls tested free for genetic recessives will not show these codes for formatting reasons. Prices are subject to change. Terms and conditions apply. Proud to use independent data powered by AHDB Dairy.

CONFORMATION

Type Merit	0.55	Mammary	0.31
Legs & Feet	0.38	Rel	53%

PRODUCTION (0 UK Daughters in 0 UK Herds)

Milk	+828 Kgs	+67% Rel
Protein	+31.3 Kgs	+0.05%
Fat	+51.2 Kgs	+0.20%

HEALTH & MANAGEMENT

Lifespan	85	Ease of Milk	+0.66
Fertility	+5.2	Temperament	+0.6
SCC	-18	Maintenance	12
MAST	-1	Dairy Carcass	1.6
Calf Survival	+1.4	TB Advantage	1.4 42%
Lameness Advantage	+0.5	Gestation Length	-1 55%
Digital Dermatitis	-0.2	Feed Advantage	+35 45%
Healthy Cow	+146 56%	Enviro Cow	+3.3 65%

CALVING TRAITS

Direct CE	-0.6 +63% Rel	Maternal CE	0.5 +50% Rel
-----------	---------------	-------------	--------------



PLI **+689** Rel 65%

AltaSULIEN

65003209641528

PEAK ALTASULIEN-ET
 PURSUIT X AltaROBSON X DENVER
 HO840M003209641528 | DOB 10/26/2019
 aAa 243 | DMS 234,345 | EFI 10.8 %
 Kappa-Casein: AB Beta-Casein: A1A2
 Genetic Codes: TC TD TL TP TR TV TY
 AHDB DAIRY & HOLSTEIN UK 12/2022- GENOMIC



CONFORMATION (0 UK Daughters in 0 UK Herds)

	-2	-1	0	1	2		
Stature						+0.41	Tall
Chest Width						+1.50	Wide
Body Depth						+1.00	Deep
Angularity						+0.93	Open Rib
Rump Angle						+0.34	Low Pins
Thurl Width						+1.20	Wide
R. Legs-S View						+0.36	Sickled
Foot Angle						+0.24	Steep
Locomotion						+1.64	Excellent
F. Udder Att.						+0.51	Tight
R. Udder Ht.						+0.52	Very high
Udder Cleft						-0.08	Broken
Udder Depth						+0.12	Above hock
F. Teat Place						+0.52	Close
R. Teat Place						-0.67	Apart
Teat Length						+0.52	Long
Teat Sideview						+0.81	Apart

Alta UK abide by the ADHB & Holstein UK established code of Advertising. Bulls tested free for genetic recessives will not show these codes for formatting reasons. Prices are subject to change. Terms and conditions apply.

CONFORMATION

Type Merit	1.64	Mammary	0.93
Legs & Feet	1.67	Rel	55%

PRODUCTION (0 UK Daughters in 0 UK Herds)

Milk	+433 Kgs	+68% Rel
Protein	+27.1 Kgs	+0.15%
Fat	+35.3 Kgs	+0.21%

HEALTH & MANAGEMENT

Lifespan	131	Ease of Milk	+1.00
Fertility	+4.1	Temperament	+0.7
SCC	-17	Maintenance	12
MAST	-2	Dairy Carcass	0.6
Calf Survival	+0.5	TB Advantage	1.9 44%
Lameness Advantage	+1.6	Gestation Length	-2 55%
Digital Dermatitis	+0.2	Feed Advantage	+39 45%
Healthy Cow	+187 58%	Enviro Cow	+3.3 66%

CALVING TRAITS

Direct CE	-0.8 +76% Rel	Maternal CE	0.6 +53% Rel
-----------	---------------	-------------	--------------



PLI **+591** Rel 64%

AltaTRACKSTER

65003205436268 | HO6602

PEAK ALTATRACKSTER-ET
 PURSUIT X RESOLVE X YODER
 HO840M003205436268 | DOB 8/16/2019
 aAa 342 | DMS 246,456 | EFI 10.6 %
 Kappa-Casein: AB Beta-Casein: A1A2
 Genetic Codes: TC TD TL TP TR TV TY
 AHDB DAIRY & HOLSTEIN UK 12/2022- GENOMIC



CONFORMATION (0 UK Daughters in 0 UK Herds)

	-2	-1	0	1	2		
Stature						+1.70	Tall
Chest Width						+1.18	Wide
Body Depth						+0.23	Deep
Angularity						+0.45	Open Rib
Rump Angle						-0.61	High Pins
Thurl Width						+1.75	Wide
R. Legs-S View						-1.00	Straight
Foot Angle						+1.57	Steep
Locomotion						+1.06	Excellent
F. Udder Att.						+1.95	Tight
R. Udder Ht.						+1.49	Very high
Udder Cleft						+1.48	Strong
Udder Depth						+2.13	Above hock
F. Teat Place						+1.54	Close
R. Teat Place						+0.92	Close
Teat Length						-0.03	Short
Teat Sideview						+0.39	Apart

Alta UK abide by the ADHB & Holstein UK established code of Advertising. Bulls tested free for genetic recessives will not show these codes for formatting reasons. Prices are subject to change. Terms and conditions apply. Proud to use independent data powered by AHDB Dairy.

CONFORMATION

Type Merit	1.53	Mammary	2.24
Legs & Feet	1.37	Rel	55%

PRODUCTION (0 UK Daughters in 0 UK Herds)

Milk	+374 Kgs	+67% Rel
Protein	+21.5 Kgs	+0.11%
Fat	+23.5 Kgs	+0.10%

HEALTH & MANAGEMENT

Lifespan	140	Ease of Milk	+1.32
Fertility	+8.0	Temperament	+0.2
SCC	-21	Maintenance	22
MAST	-3	Dairy Carcass	0.4
Calf Survival	+0.7	TB Advantage	1.4 43%
Lameness Advantage	+1.9	Gestation Length	-2 54%
Digital Dermatitis	+0.1	Feed Advantage	-47 45%
Healthy Cow	+257 58%	Enviro Cow	+2.4 66%

CALVING TRAITS

Direct CE	-0.6 +73% Rel	Maternal CE	1.3 +53% Rel
-----------	---------------	-------------	--------------



PLI **+687** Rel 65%

AltaWHEELHOUSE

65003209641362 | HO6603

PEAK WHEELHOUSE-ET
 PURSUIT X DUKE X RUBICON
 HO840M003209641362 | DOB 9/2/2019
 aAa 423 | DMS 135,345 | EFI 11.2 %
 Kappa-Casein: AB Beta-Casein: A2A2
 Genetic Codes: TC TD TL TR TV TY
 AHDB DAIRY & HOLSTEIN UK 12/2022- GENOMIC



CONFORMATION

Type Merit	1.45	Mammary	1.24
Legs & Feet	0.63	Rel	56%

PRODUCTION (0 UK Daughters in 0 UK Herds)

Milk	+676 Kgs	+68% Rel
Protein	+28.0 Kgs	+0.06%
Fat	+40.4 Kgs	+0.15%

HEALTH & MANAGEMENT

Lifespan	134	Ease of Milk	+0.63
Fertility	+6.0	Temperament	+0.5
SCC	-13	Maintenance	15
MAST	-1	Dairy Carcass	1.1
Calf Survival	+1.3	TB Advantage	2.5 44%
Lameness Advantage	+1.9	Gestation Length	0 99%
Digital Dermatitis		Feed Advantage	+16 45%
Healthy Cow	+196 58%	Enviro Cow	+3.2 66%

CALVING TRAITS

Direct CE	0.2 +80% Rel	Maternal CE	1.3 +53% Rel
-----------	--------------	-------------	--------------

CONFORMATION (0 UK Daughters in 0 UK Herds)

	-2	-1	0	1	2		
Stature						+0.45	Tall
Chest Width						+2.01	Wide
Body Depth						+0.89	Deep
Angularity						+1.04	Open Rib
Rump Angle						+1.70	Low Pins
Thurl Width						+2.20	Wide
R. Legs-S View						+0.16	Sickled
Foot Angle						+0.18	Steep
Locomotion						+0.54	Excellent
F. Udder Att.						+0.58	Tight
R. Udder Ht.						+0.94	Very high
Udder Cleft						+0.96	Strong
Udder Depth						+0.17	Above hock
F. Teat Place						+1.70	Close
R. Teat Place						+1.47	Close
Teat Length						-1.20	Short
Teat Sideview						+0.73	Apart

Alta UK abide by the ADHB & Holstein UK established code of Advertising. Bulls tested free for genetic recessives will not show these codes for formatting reasons. Prices are subject to change. Terms and conditions apply.



PLI **+748** Rel 63%

AltaWINX

65003224928451

NEW

PEAK ALTAWINX-ET
 AltaWHEELHOUSE X AltaZAZZLE X KING ROYAL
 HO840M003224928451 | DOB 7/31/2021
 aAa 243 | DMS 234,123 | EFI 10.8 %
 Kappa-Casein: AA Beta-Casein: A2A2
 Genetic Codes: TC TD TL TV TY
 AHDB DAIRY & HOLSTEIN UK 12/2022- GENOMIC



CONFORMATION

Type Merit	1.50	Mammary	1.46
Legs & Feet	0.85	Rel	53%

PRODUCTION (0 UK Daughters in 0 UK Herds)

Milk	+1189 Kgs	+66% Rel
Protein	+34.3 Kgs	-0.05%
Fat	+43.5 Kgs	-0.04%

HEALTH & MANAGEMENT

Lifespan	143	Ease of Milk	+0.50
Fertility	+2.0	Temperament	+0.3
SCC	-16	Maintenance	2
MAST	-2	Dairy Carcass	-0.3
Calf Survival	+1.6	TB Advantage	2.3 40%
Lameness Advantage	+2.9	Gestation Length	-2 55%
Digital Dermatitis	+0.6	Feed Advantage	+105 45%
Healthy Cow	+195 56%	Enviro Cow	+3.7 65%

CALVING TRAITS

Direct CE	0.0 +64% Rel	Maternal CE	0.7 +53% Rel
-----------	--------------	-------------	--------------

CONFORMATION (0 UK Daughters in 0 UK Herds)

	-2	-1	0	1	2		
Stature						+0.45	Tall
Chest Width						+0.07	Wide
Body Depth						-0.09	Shallow
Angularity						+1.52	Open Rib
Rump Angle						+0.14	Low Pins
Thurl Width						+0.42	Wide
R. Legs-S View						-0.54	Straight
Foot Angle						+0.15	Steep
Locomotion						+0.84	Excellent
F. Udder Att.						+1.15	Tight
R. Udder Ht.						+1.64	Very high
Udder Cleft						+0.75	Strong
Udder Depth						+0.87	Above hock
F. Teat Place						+0.80	Close
R. Teat Place						+1.07	Close
Teat Length						-1.38	Short
Teat Sideview						+1.14	Apart

Alta UK abide by the ADHB & Holstein UK established code of Advertising. Bulls tested free for genetic recessives will not show these codes for formatting reasons. Prices are subject to change. Terms and conditions apply. Proud to use independent data powered by AHDB Dairy.



PLI **+820** Rel 64%

AltaZEMINI

NEW

65003215425541

PEAK ALTAZEMINI-ET
 AltaZAZZLE X AltaLAWSON X FRAZZLED
 HO840M003215425541 | DOB 6/3/2020
 aAa 324 | DMS 234,246 | EFI 11.0 %
 Kappa-Casein: BB Beta-Casein: A1A2
 Genetic Codes: TC TD TL TP TR TV TY
 AHDB DAIRY & HOLSTEIN UK 12/2022- GENOMIC



CONFORMATION (0 UK Daughters in 0 UK Herds)

	-2	-1	0	1	2		
Stature						+0.27	Tall
Chest Width						+1.17	Wide
Body Depth						+0.62	Deep
Angularity						+1.17	Open Rib
Rump Angle						-1.18	High Pins
Thurl Width						+1.14	Wide
R. Legs-S View						+0.72	Sickled
Foot Angle						-0.03	Low
Locomotion						+0.08	Excellent
F. Udder Att.						+0.99	Tight
R. Udder Ht.						+0.66	Very high
Udder Cleft						-0.49	Broken
Udder Depth						-0.03	Below Hock
F. Teat Place						+0.81	Close
R. Teat Place						-0.36	Apart
Teat Length						-0.26	Short
Teat Sideview						+0.60	Apart

Alta UK abide by the ADHB & Holstein UK established code of Advertising. Bulls tested free for genetic recessives will not show these codes for formatting reasons. Prices are subject to change. Terms and conditions apply.

CONFORMATION

Type Merit	0.90	Mammary	0.89
Legs & Feet	-0.10	Rel	53%

PRODUCTION (0 UK Daughters in 0 UK Herds)

Milk	+867 Kgs	+67% Rel
Protein	+38.7 Kgs	+0.11%
Fat	+52.9 Kgs	+0.20%

HEALTH & MANAGEMENT

Lifespan	64	Ease of Milk	+0.76
Fertility	+1.5	Temperament	+0.4
SCC	-21	Maintenance	8
MAST	-1	Dairy Carcass	2.2
Calf Survival	+1.7	TB Advantage	-0.2 41%
Lameness Advantage	+1.9	Gestation Length	-2 55%
Digital Dermatitis	+0.1	Feed Advantage	+85 45%
Healthy Cow	+127 58%	Enviro Cow	+3.9 66%

CALVING TRAITS

Direct CE	-0.2 +71% Rel	Maternal CE	0.9 +53% Rel
-----------	---------------	-------------	--------------



PLI **+861** Rel 63%

AltaZEOLITE

65003215425436 | H07222

PEAK ALTAZEOLITE-ET
 AltaZAZZLE X POSITIVE X MEDLEY
 HO840M003215425436 | DOB 4/27/2020
 aAa 432 | DMS 561,135 | EFI 11.0 %
 Kappa-Casein: BB Beta-Casein: A1A2
 Haplotype: HH6C | Genetic Codes: TC TD TL TP TR TV TY
 AHDB DAIRY & HOLSTEIN UK 12/2022- GENOMIC



CONFORMATION (0 UK Daughters in 0 UK Herds)

	-2	-1	0	1	2		
Stature						+0.05	Tall
Chest Width						+0.81	Wide
Body Depth						-0.40	Shallow
Angularity						+0.10	Open Rib
Rump Angle						+1.27	Low Pins
Thurl Width						+0.38	Wide
R. Legs-S View						-0.22	Straight
Foot Angle						+0.45	Steep
Locomotion						+0.11	Excellent
F. Udder Att.						+1.02	Tight
R. Udder Ht.						+0.64	Very high
Udder Cleft						-0.22	Broken
Udder Depth						+0.65	Above hock
F. Teat Place						+0.16	Close
R. Teat Place						-0.09	Apart
Teat Length						-1.76	Short
Teat Sideview						+0.45	Apart

Alta UK abide by the ADHB & Holstein UK established code of Advertising. Bulls tested free for genetic recessives will not show these codes for formatting reasons. Prices are subject to change. Terms and conditions apply. Proud to use independent data powered by AHDB Dairy.

CONFORMATION

Type Merit	0.69	Mammary	0.88
Legs & Feet	0.10	Rel	53%

PRODUCTION (0 UK Daughters in 0 UK Herds)

Milk	+905 Kgs	+67% Rel
Protein	+36.3 Kgs	+0.07%
Fat	+50.2 Kgs	+0.15%

HEALTH & MANAGEMENT

Lifespan	131	Ease of Milk	+0.17
Fertility	+9.2	Temperament	+0.7
SCC	-17	Maintenance	5
MAST	-1	Dairy Carcass	0.6
Calf Survival	+0.6	TB Advantage	0.3 40%
Lameness Advantage	+1.7	Gestation Length	-1 55%
Digital Dermatitis	+0.2	Feed Advantage	+84 45%
Healthy Cow	+206 57%	Enviro Cow	+4.1 66%

CALVING TRAITS

Direct CE	0.0 +64% Rel	Maternal CE	1.4 +53% Rel
-----------	--------------	-------------	--------------



PLI +791 Rel 64%

AltaZINGLER

65003213001126 | HO6887

PEAK ALTAZINGLER-ET

AltaZAZZLE X AltaROBERT X FRAZZLED

HO840M003213001126 | DOB 4/4/2020

aAa 234 | DMS 561,126 | EFI 10.9 %

Kappa-Casein: AB Beta-Casein: A1A2

Genetic Codes: TC TD TL TP TR TV TY

AHDB DAIRY & HOLSTEIN UK 12/2022- GENOMIC



CONFORMATION (0 UK Daughters in 0 UK Herds)

	-2	-1	0	1	2		
Stature						+0.16	Tall
Chest Width						-0.09	Narrow
Body Depth						-1.17	Shallow
Angularity						-0.69	Coarse
Rump Angle						+0.65	Low Pins
Thurl Width						+0.14	Wide
R. Legs-S View						+0.01	Sickled
Foot Angle						-0.03	Low
Locomotion						+0.22	Excellent
F. Udder Att.						+1.63	Tight
R. Udder Ht.						-0.20	Very Low
Udder Cleft						-0.71	Broken
Udder Depth						+1.45	Above hock
F. Teat Place						-0.60	Outside
R. Teat Place						-0.82	Apart
Teat Length						-0.32	Short
Teat Sideview						-0.31	Close

Alta UK abide by the AHDB & Holstein UK established code of Advertising. Bulls tested free for genetic recessives will not show these codes for formatting reasons. Prices are subject to change. Terms and conditions apply.

CONFORMATION

Type Merit	0.31	Mammary	0.86
Legs & Feet	0.23	Rel	53%

PRODUCTION (0 UK Daughters in 0 UK Herds)

Milk	+614 Kgs	+67% Rel
Protein	+25.7 Kgs	+0.06%
Fat	+33.5 Kgs	+0.10%

HEALTH & MANAGEMENT

Lifespan	177	Ease of Milk	+0.03
Fertility	+14.4	Temperament	+0.5
SCC	-28	Maintenance	2
MAST	-2	Dairy Carcass	1.1
Calf Survival	+1.5	TB Advantage	0.5 41%
Lameness Advantage	+2.1	Gestation Length	-3 97%
Digital Dermatitis	+0.2	Feed Advantage	+101 45%
Healthy Cow	+310 58%	Enviro Cow	+3.6 66%

CALVING TRAITS

Direct CE	0.1 +67% Rel	Maternal CE	1.1 +53% Rel
-----------	--------------	-------------	--------------



TRUE EXPERTISE

When we say we're TRUE BLUE it's our way of showing you what it means to be Alta.

Our staff are extensively trained and always learning in order to become experts in their field.

We know that your success goes beyond which bulls you choose, so our knowledgeable staff will present you with a suite of technology, products, and service to help you manage every aspect of your operation.

We have the EXPERTISE to help you reach your full potential.

TRUE BLUE is Alta.





PLI **+635** Rel 63%

AltaMAKOA-PP

NEW

65003236651121

WINSTAR ALTAMAKOA-PP-ET
MENDEL-P X HEROIC X DELTA
H0840M003236651121 | DOB 8/18/2021

aAa 345 | DMS 345,135 | EFI 10.7 %
Kappa-Casein: AB Beta-Casein: A2A2
Genetic Codes: PP TC TD TL TV TY
AHDB DAIRY & HOLSTEIN UK 12/2022- GENOMIC



CONFORMATION (0 UK Daughters in 0 UK Herds)

	-2	-1	0	1	2		
Stature			█			-0.88	Short
Chest Width			█			-0.31	Narrow
Body Depth			█			-0.43	Shallow
Angularity				█		+0.90	Open Rib
Rump Angle				█		+0.19	Low Pins
Thurl Width				█		+0.53	Wide
R. Legs-S View				█		+1.48	Sickled
Foot Angle		█				-1.24	Low
Locomotion				█		+0.85	Excellent
F. Udder Att.				█		+0.21	Tight
R. Udder Ht.				█		+1.40	Very high
Udder Cleft				█		+1.23	Strong
Udder Depth				█		+0.08	Above hock
F. Teat Place				█		+0.69	Close
R. Teat Place				█		+1.61	Close
Teat Length				█		-0.18	Short
Teat Sideview				█		+0.51	Apart

Alta UK abide by the ADHB & Holstein UK established code of Advertising. Bulls tested free for genetic recessives will not show these codes for formatting reasons. Prices are subject to change. Terms and conditions apply.

CONFORMATION

Type Merit	1.30	Mammary	1.22
Legs & Feet	0.84	Rel	53%

PRODUCTION (0 UK Daughters in 0 UK Herds)

Milk	+696 Kgs	+67% Rel
Protein	+24.7 Kgs	+0.02%
Fat	+43.6 Kgs	+0.17%

HEALTH & MANAGEMENT

Lifespan	95	Ease of Milk	+0.22
Fertility	+4.4	Temperament	+0.3
SCC	-6	Maintenance	-12
MAST	0	Dairy Carcass	1.3
Calf Survival	+1.4	TB Advantage	1.7 42%
Lameness Advantage	+1.3	Gestation Length	0 55%
Digital Dermatitis	+0.2	Feed Advantage	+100 45%
Healthy Cow	+141 56%	Enviro Cow	+3.1 65%

CALVING TRAITS

Direct CE	-0.2 +62% Rel	Maternal CE	1.2 +50% Rel
-----------	---------------	-------------	--------------



PLI **+724** Rel 64%

AltaMONTU-PP

65003210987593 | H07374

TTM-LFD ALTAMONTU-PP
LIMELIGHT-P X KENNEDY X JEDI
H0840M003210987593 | DOB 6/8/2020

aAa 351 | DMS 246,234 | EFI 10.5 %
Kappa-Casein: EE Beta-Casein: A1A1
Genetic Codes: PP TC TD TL TR TV TY
AHDB DAIRY & HOLSTEIN UK 12/2022- GENOMIC



CONFORMATION (0 UK Daughters in 0 UK Herds)

	-2	-1	0	1	2		
Stature			█			-0.40	Short
Chest Width			█			-0.49	Narrow
Body Depth			█			-0.42	Shallow
Angularity				█		-0.07	Coarse
Rump Angle				█		-0.01	High Pins
Thurl Width				█		+0.56	Wide
R. Legs-S View				█		+0.92	Sickled
Foot Angle		█				-0.73	Low
Locomotion				█		+0.61	Excellent
F. Udder Att.				█		+1.27	Tight
R. Udder Ht.				█		+0.48	Very high
Udder Cleft				█		-0.06	Broken
Udder Depth				█		+1.08	Above hock
F. Teat Place				█		+0.22	Close
R. Teat Place				█		+0.22	Close
Teat Length				█		-0.57	Short
Teat Sideview				█		+0.26	Apart

Alta UK abide by the ADHB & Holstein UK established code of Advertising. Bulls tested free for genetic recessives will not show these codes for formatting reasons. Prices are subject to change. Terms and conditions apply. Proud to use independent data powered by AHDB Dairy.

CONFORMATION

Type Merit	0.73	Mammary	1.03
Legs & Feet	0.53	Rel	55%

PRODUCTION (0 UK Daughters in 0 UK Herds)

Milk	+505 Kgs	+67% Rel
Protein	+27.0 Kgs	+0.12%
Fat	+47.1 Kgs	+0.31%

HEALTH & MANAGEMENT

Lifespan	37	Ease of Milk	-0.10
Fertility	+2.8	Temperament	+0.6
SCC	-18	Maintenance	-7
MAST	-1	Dairy Carcass	-0.2
Calf Survival	+1.7	TB Advantage	0.4 42%
Lameness Advantage	+2.6	Gestation Length	0 48%
Digital Dermatitis	+0.1	Feed Advantage	+122 45%
Healthy Cow	+140 56%	Enviro Cow	+3.3 66%

CALVING TRAITS

Direct CE	0.2 +63% Rel	Maternal CE	0.9 +52% Rel
-----------	--------------	-------------	--------------



PLI **+651** Rel 63%

AltaWYLEE-PP-RC

65003214292445 | H07216

WINSTAR ALTAWYLEE-PP-ET
MONUMENT-P X WINDFALL X POWERBALL-P
H0840M003214292445 | DOB 4/13/2020

aAa 423 | DMS 345,135 | EFI 9.7 %
Kappa-Casein: AB Beta-Casein: A2A2
Genetic Codes: PO PP RC TC TD TL TV TY
AHDB DAIRY & HOLSTEIN UK 12/2022 - GENOMIC



CONFORMATION (0 UK Daughters in 0 UK Herds)

	-2	-1	0	1	2		
Stature						-0.94	Short
Chest Width						+0.46	Wide
Body Depth						-0.69	Shallow
Angularity						+0.14	Open Rib
Rump Angle						+0.25	Low Pins
Thurl Width						-0.59	Narrow
R. Legs-S View						+0.26	Sickled
Foot Angle						-0.26	Low
Locomotion						-0.18	Poor
F. Udder Att.						+1.00	Tight
R. Udder Ht.						+0.67	Very high
Udder Cleft						+0.66	Strong
Udder Depth						+0.30	Above hock
F. Teat Place						+0.60	Close
R. Teat Place						+1.25	Close
Teat Length						-1.48	Short
Teat Sideview						+0.87	Apart

Alta UK abide by the ADHB & Holstein UK established code of Advertising. Bulls tested free for genetic recessives will not show these codes for formatting reasons. Prices are subject to change. Terms and conditions apply.

CONFORMATION

Type Merit	0.79	Mammary	1.22
Legs & Feet	-0.07	Rel	53%

PRODUCTION (0 UK Daughters in 0 UK Herds)

Milk	+815 Kgs	+67% Rel
Protein	+27.3 Kgs	+0.01%
Fat	+35.3 Kgs	+0.03%

HEALTH & MANAGEMENT

Lifespan	79	Ease of Milk	+0.05
Fertility	+5.7	Temperament	+1.1
SCC	-11	Maintenance	-7
MAST	0	Dairy Carcass	1.0
Calf Survival	+2.7	TB Advantage	2.6 43%
Lameness Advantage	+1.4	Gestation Length	0 53%
Digital Dermatitis	+0.2	Feed Advantage	+138 45%
Healthy Cow	+151 57%	Enviro Cow	+3.1 66%

CALVING TRAITS

Direct CE	-0.6 +63% Rel	Maternal CE	0.6 +50% Rel
-----------	---------------	-------------	--------------

BEEF x DAIRY

ASK YOUR BREEDING ADVISOR ABOUT OUR RANGE OF AVAILABLE BEEF SIREs

BLACK ANGUS



HIGHWAY

UK959342703271
AI code AA1784
Birthdate 04-24-2019

BELGIAN BLUE



AltaKJELD

NL 944457429
AI code BB1655
Birthdate 13-02-2017

SIMMENTAL



MISSILE

3594131
AI code SG1366
Birthdate 04-16-2018

LIMOUSIN



IFOR

MGD13-8897
AI code LN2553
Birthdate 09-26-2013



PLI **+645** Rel 64%

AltaKAMARA-RED NEW

63000577621479 | HO7402

KOEPON ALTAKAMARA-RED-ET
RUBELS RED X AltaALTUVE*RC X SALVATORE RC
HONLDM000577621479 | DOB 7/1/2021

aAa | EFI 11.4 %
Kappa-Casein: BE Beta-Casein: A1A1

AHDB DAIRY & HOLSTEIN UK 12/2022 - GENOMIC



CONFORMATION (0 UK Daughters in 0 UK Herds)

	-2	-1	0	1	2		
Stature						+0.62	Tall
Chest Width						-0.17	Narrow
Body Depth						-0.10	Shallow
Angularity						+1.71	Open Rib
Rump Angle						-0.57	High Pins
Thurl Width						+1.59	Wide
R. Legs-S View						+1.74	Sickled
Foot Angle						-0.15	Low
Locomotion						+1.15	Excellent
F. Udder Att.						+1.98	Tight
R. Udder Ht.						+2.62	Very high
Udder Cleft						+0.13	Strong
Udder Depth						+1.72	Above hock
F. Teat Place						+1.51	Close
R. Teat Place						-0.43	Apart
Teat Length						-0.16	Short
Teat Sideview						+0.51	Apart

Alta UK abide by the ADHB & Holstein UK established code of Advertising. Bulls tested free for genetic recessives will not show these codes for formatting reasons. Prices are subject to change. Terms and conditions apply.

CONFORMATION

Type Merit	2.46	Mammary	2.83
Legs & Feet	1.35	Rel	55%

PRODUCTION (0 UK Daughters in 0 UK Herds)

Milk	+941 Kgs	+68% Rel
Protein	+27.6 Kgs	-0.04%
Fat	+34.2 Kgs	-0.04%

HEALTH & MANAGEMENT

Lifespan	140	Ease of Milk	-0.77
Fertility	+0.9	Temperament	+0.3
SCC	-26	Maintenance	1
MAST	-2	Dairy Carcass	0.7
Calf Survival	+0.7	TB Advantage	3.0 48%
Lameness Advantage	+0.8	Gestation Length	-1 55%
Digital Dermatitis	+0.3	Feed Advantage	+100 45%
Healthy Cow	+200 57%	Enviro Cow	+3.2 66%

CALVING TRAITS

Direct CE	-0.3 +65% Rel	Maternal CE	0.6 +52% Rel
-----------	---------------	-------------	--------------



PLI **+717** Rel 63%

AltaRUTILANT-RED NEW

011HO16007

KOEPON ALTARUTILANT-RED-ET
SPUTNIK RDC X AltaALTUVE*RC X SALVATORE RC
HONLDM000549118594 | DOB 3/14/2021
DMS 123,126 | EFI 10.7 %
Kappa-Casein BB | Beta-Casein A1A1

AHDB Dairy & Holstein UK 12/2022 - GENOMIC



CONFORMATION (0 UK Daughters in 0 UK Herds)

	-2	-1	0	1	2		
Stature						+0.60	Tall
Chest Width						+0.70	Wide
Body Depth						-0.05	Shallow
Angularity						+0.54	Course
Rump Angle						+1.03	Low Pins
Thurl Width						+0.92	Wide
R. Legs-S View						+0.29	Sickled
Foot Angle						+0.56	Steep
Locomotion						+1.64	Excellent
F. Udder Att.						+0.50	Tight
R. Udder Ht.						+1.31	Very high
Udder Cleft						+0.16	Strong
Udder Depth						+0.30	Above hock
F. Teat Place						+0.97	Close
R. Teat Place						+0.79	Close
Teat Length						+0.28	Long
Teat Sideview						+0.58	Apart

Alta UK abide by the ADHB & Holstein UK established code of Advertising. Bulls tested free for genetic recessives will not show these codes for formatting reasons. Prices are subject to change. Terms and conditions apply. Proud to use independent data powered by AHDB Dairy.

CONFORMATION

Type Merit	+1.35	Mammary	+1.08
Legs & Feet	+1.57	Rel	53%

PRODUCTION (0 UK Daughters in 0 UK Herds)

Milk	+1047 Kgs	67% Rel
Protein	+32.5 Kgs	-0.02%
Fat	+40.2 Kgs	-0.02%

HEALTH & MANAGEMENT

Lifespan	116	Ease of Milk	-0.69
Fertility	+4.1	Temperament	+0.5
SCC	-24	Maintenance	9
Mastitis	-2	Dairy Carcass	+0.2
Calf Survival	+1.35	TB Advantage	-0.9 43%
Lameness Advantage	+2.2	Gestation Length	-2 49%
Digital Dermatitis	+0.5	Feed Advantage	+31 45%
Healthy Cow	+209 56%	Enviro Cow	+3.1 66%

CALVING TRAITS

Direct CE	-0.3 63% Rel	Maternal CE	+1.2 53% Rel
-----------	--------------	-------------	--------------



PLI **+561** Rel 64%

AltaTRY-RED

65003213815980 | H07215

TRENT-WAY-JS ALTATRY-RED-ET
TOMCRUISE X KING ROYAL X SILVER
H0840M003213815980 | DOB 6/17/2020

aAa 432 | DMS 234,246 | EFI 11.4 %
Kappa-Casein: BB Beta-Casein: A1A1

Genetic Codes: TC TD TL TP TV TY
AHDB DAIRY & HOLSTEIN UK 12/2022- GENOMIC



CONFORMATION (0 UK Daughters in 0 UK Herds)

	-2	-1	0	1	2		
Stature						+0.99	Tall
Chest Width						+0.97	Wide
Body Depth						+1.00	Deep
Angularity						+1.07	Open Rib
Rump Angle						-0.41	High Pins
Thurl Width						+0.99	Wide
R. Legs-S View						-1.32	Straight
Foot Angle						+0.74	Steep
Locomotion						+0.56	Excellent
F. Udder Att.						+1.70	Tight
R. Udder Ht.						+1.88	Very high
Udder Cleft						+1.21	Strong
Udder Depth						+0.98	Above hock
F. Teat Place						+1.12	Close
R. Teat Place						+1.26	Close
Teat Length						-0.84	Short
Teat Sideview						+1.17	Apart

Alta UK abide by the ADHB & Holstein UK established code of Advertising. Bulls tested free for genetic recessives will not show these codes for formatting reasons. Prices are subject to change. Terms and conditions apply.

CONFORMATION

Type Merit	1.43	Mammary	1.92
Legs & Feet	0.56	Rel	54%

PRODUCTION (0 UK Daughters in 0 UK Herds)

Milk	+660 Kgs	+67% Rel
Protein	+30.4 Kgs	+0.10%
Fat	+32.6 Kgs	+0.07%

HEALTH & MANAGEMENT

Lifespan	34	Ease of Milk	+1.70
Fertility	+1.6	Temperament	+0.7
SCC	-9	Maintenance	13
MAST	0	Dairy Carcass	0.5
Calf Survival	+0.6	TB Advantage	0.2 44%
Lameness Advantage	+1.5	Gestation Length	-1 49%
Digital Dermatitis	+0.4	Feed Advantage	-3 45%
Healthy Cow	+86 57%	Enviro Cow	+2.4 66%

CALVING TRAITS

Direct CE	-1.1 +62% Rel	Maternal CE	0.3 +53% Rel
-----------	---------------	-------------	--------------

MALE SEXED ANGUS AVAILABLE

CG BOOST | 011AN02302

- ▲ Superior performance sire ranking at the top of the breed for WW, YW, RADG, and CW
- ▲ Excellent carcass merit
- ▲ High \$Values with \$F and \$B in the top 1%

Ask your Alta advisor for a complete listing of available sexed beef sires.



Fugazza Antonio Tapla
Fugazza Holsteins Farm; Italy

PLI **+723** Rel 93%

AltaANTONIO

65003138948148 | HO5198

AURORA ALTAANTONIO-ET
BANDARES X COMMANDER X MAYFIELD
HO840M003138948148 | DOB 10/16/2016
aAa 351 | DMS 135,561 | EFI 10.0 %
Kappa-Casein: BB Beta-Casein: A2A2
Genetic Codes: TC TD TL TP TR TV TY
AHDB DAIRY & HOLSTEIN UK 12/2022- DAUGHTER PROVEN



CONFORMATION (84 UK Daughters in 15 UK Herds) (751 D | 213 H 95%R US)

	-2	-1	0	1	2	
Stature						-0.44 Short
Chest Width						+0.93 Wide
Body Depth						+0.83 Deep
Angularity						+0.89 Open Rib
Rump Angle						+0.50 Low Pins
Thurl Width						+0.56 Wide
R. Legs-S View						+1.57 Sickled
Foot Angle						-2.01 Low
Locomotion						+1.60 Excellent
F. Udder Att.						-0.01 Loose
R. Udder Ht.						+0.20 Very high
Udder Cleft						-0.12 Broken
Udder Depth						-1.10 Below Hock
F. Teat Place						+1.71 Close
R. Teat Place						+1.03 Close
Teat Length						-1.36 Short
Teat Sideview						+1.15 Apart

Alta UK abide by the ADHB & Holstein UK established code of Advertising. Bulls tested free for genetic recessives will not show these codes for formatting reasons. Prices are subject to change. Terms and conditions apply.

CONFORMATION

Type Merit	1.32	Mammary	0.50
Legs & Feet	1.38	Rel	89%

PRODUCTION (271 UK Daughters in 47 UK Herds) (2316D | 498H 18%US)

Milk	+825 Kgs	+98% Rel
Protein	+30.4 Kgs	+0.04%
Fat	+38.2 Kgs	+0.06%

HEALTH & MANAGEMENT

Lifespan	116	Ease of Milk	+2.21
Fertility	+7.1	Temperament	+0.4
SCC	-9	Maintenance	0
MAST	-1	Dairy Carcass	0.3
Calf Survival	+2.8	TB Advantage	-5.9 91%
Lameness Advantage	+2.2	Gestation Length	+1 99%
Digital Dermatitis	+0.8	Feed Advantage	+73 61%
Healthy Cow	+202 85%	Enviro Cow	+3.3 95%

CALVING TRAITS

Direct CE	-0.6 +91% Rel	Maternal CE	0.5 +72% Rel
-----------	---------------	-------------	--------------



Fugazza GOPRO
Elvetia and Elica
Fugazza Holstein;
Gragnanino
(PC. Italy)

PLI **+525** Rel 82%

AltaGOPRO

65003139733266 | HO6230

PEAK ALTAGOPRO-ET
HELIX X MONTROSS X EPIC
HO840M003139733266 | DOB 2/7/2017
aAa 423 | DMS 345,234 | EFI 11.0 %
Kappa-Casein: AB Beta-Casein: A2A2
Genetic Codes: TC TD TL TP TR TV TY
AHDB DAIRY & HOLSTEIN UK 12/2022- DAUGHTER PROVEN



CONFORMATION (0 UK Daughters in 0 UK Herds) (228 D | 58 H 96%R US)

	-2	-1	0	1	2	
Stature						+0.92 Tall
Chest Width						+1.60 Wide
Body Depth						+1.50 Deep
Angularity						+1.10 Open Rib
Rump Angle						-0.38 High Pins
Thurl Width						+0.88 Wide
R. Legs-S View						+1.65 Sickled
Foot Angle						-0.89 Low
Locomotion						-0.86 Poor
F. Udder Att.						-0.09 Loose
R. Udder Ht.						+0.84 Very high
Udder Cleft						+1.29 Strong
Udder Depth						-0.58 Below Hock
F. Teat Place						+1.43 Close
R. Teat Place						+1.68 Close
Teat Length						-0.87 Short
Teat Sideview						+0.53 Apart

Alta UK abide by the ADHB & Holstein UK established code of Advertising. Bulls tested free for genetic recessives will not show these codes for formatting reasons. Prices are subject to change. Terms and conditions apply. Proud to use independent data powered by AHDB Dairy.

CONFORMATION

Type Merit	0.36	Mammary	0.63
Legs & Feet	-0.50	Rel	76%

PRODUCTION (0 UK Daughters in 0 UK Herds) (1267 D | 179 H 87% US)

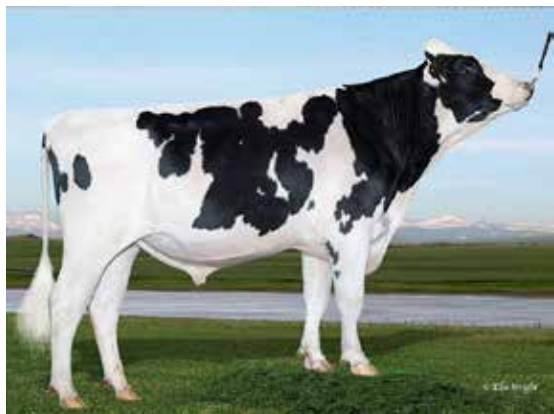
Milk	+1479 Kgs	+85% Rel
Protein	+38.7 Kgs	-0.10%
Fat	+37.5 Kgs	-0.22%

HEALTH & MANAGEMENT

Lifespan	58	Ease of Milk	+0.59
Fertility	-3.8	Temperament	+0.5
SCC	-14	Maintenance	17
MAST	0	Dairy Carcass	2.0
Calf Survival	+0.2	TB Advantage	1.1 52%
Lameness Advantage	+1.2	Gestation Length	0 99%
Digital Dermatitis	-0.1	Feed Advantage	+5 57%
Healthy Cow	+29 73%	Enviro Cow	+2.6 84%

CALVING TRAITS

Direct CE	-0.5 +80% Rel	Maternal CE	1.0 +65% Rel
-----------	---------------	-------------	--------------



PLI **+565** Rel 77%

AltaINDIGO

65003147839890 | HO5843

PEAK ALTAINDIGO-ET
 IMAX X DRACO X SUPERSIRE
 HO840M003147839890 | DOB 11/21/2017
 aAa 342 | DMS 345,135 | EFI 11.2 %
 Kappa-Casein: AE Beta-Casein: A1A2
 Genetic Codes: TC TD TL TP TR TV TY
 AHDB DAIRY & HOLSTEIN UK 12/2022- DAUGHTER PROVEN



CONFORMATION (0 UK Daughters in 0 UK Herds) (58 D | 14 H 88%R US)

	-2	-1	0	1	2		
Stature						+0.99	Tall
Chest Width						+1.58	Wide
Body Depth						+0.34	Deep
Angularity						+0.70	Open Rib
Rump Angle						+0.39	Low Pins
Thurl Width						+1.28	Wide
R. Legs-S View						+0.20	Sickled
Foot Angle						+0.32	Steep
Locomotion						+0.77	Excellent
F. Udder Att.						+0.80	Tight
R. Udder Ht.						+1.74	Very high
Udder Cleft						+0.38	Strong
Udder Depth						+0.65	Above hock
F. Teat Place						-0.03	Outside
R. Teat Place						+0.42	Close
Teat Length						+0.97	Long
Teat Sideview						+1.98	Apart

Alta UK abide by the ADHB & Holstein UK established code of Advertising. Bulls tested free for genetic recessives will not show these codes for formatting reasons. Prices are subject to change. Terms and conditions apply.

CONFORMATION

Type Merit	1.21	Mammary	1.34
Legs & Feet	0.84	Rel	70%

PRODUCTION (0 UK Daughters in 0 UK Herds) (401D | 47H 85%US)

Milk	+895 Kgs	+83% Rel
Protein	+31.1 Kgs	+0.02%
Fat	+36.8 Kgs	+0.01%

HEALTH & MANAGEMENT

Lifespan	67	Ease of Milk	+0.86
Fertility	-3.2	Temperament	+0.3
SCC	-6	Maintenance	18
MAST	0	Dairy Carcass	0.4
Calf Survival	+3.5	TB Advantage	2.7 47%
Lameness Advantage	+2.1	Gestation Length	-1 99%
Digital Dermatitis	+0.5	Feed Advantage	-10 53%
Healthy Cow	+98 68%	Enviro Cow	+2.5 78%

CALVING TRAITS

Direct CE	-0.1 +76% Rel	Maternal CE	0.7 +61% Rel
-----------	---------------	-------------	--------------

AltaZAREK Group
 Arisi Holsteins; Cremona, Italy



PLI **+642** Rel 90%

AltaZAREK

63000685695366 | HO5734

PEAK ALTAZAREK-ET
 AltaTOPSHOT X RUBICON X JABIR
 HONLDM000685695366 | DOB 7/16/2017
 aAa 342516 | DMS 123,126 | EFI 11.1 %
 Kappa-Casein: AB Beta-Casein: A2A2
 Genetic Codes: TC TD TL TP TR TV TY
 AHDB DAIRY & HOLSTEIN UK 12/2022- DAUGHTER PROVEN



CONFORMATION (79 UK Daughters in 13 UK Herds) (1005 D | 220 H 95%R US)

	-2	-1	0	1	2		
Stature						-0.32	Short
Chest Width						-0.27	Narrow
Body Depth						-1.43	Shallow
Angularity						+0.29	Open Rib
Rump Angle						-0.44	High Pins
Thurl Width						-0.91	Narrow
R. Legs-S View						+2.26	Sickled
Foot Angle						-1.49	Low
Locomotion						+1.06	Excellent
F. Udder Att.						+2.01	Tight
R. Udder Ht.						+0.73	Very high
Udder Cleft						-1.48	Broken
Udder Depth						+1.48	Above hock
F. Teat Place						-1.06	Outside
R. Teat Place						-1.59	Apart
Teat Length						+0.30	Long
Teat Sideview						+0.63	Apart

Alta UK abide by the ADHB & Holstein UK established code of Advertising. Bulls tested free for genetic recessives will not show these codes for formatting reasons. Prices are subject to change. Terms and conditions apply. Proud to use independent data powered by AHDB Dairy.

CONFORMATION

Type Merit	1.28	Mammary	1.46
Legs & Feet	0.90	Rel	88%

PRODUCTION (245 UK Daughters in 35 UK Herds)(3454D | 603H 28%US)

Milk	+932 Kgs	+97% Rel
Protein	+30.5 Kgs	0.00%
Fat	+41.8 Kgs	+0.05%

HEALTH & MANAGEMENT

Lifespan	125	Ease of Milk	+0.81
Fertility	-4.1	Temperament	+0.5
SCC	-11	Maintenance	-6
MAST	-1	Dairy Carcass	2.6
Calf Survival	+2.1	TB Advantage	0.1 92%
Lameness Advantage	+3.4	Gestation Length	-3 99%
Digital Dermatitis	+0.6	Feed Advantage	+63 61%
Healthy Cow	+130 80%	Enviro Cow	+3.2 94%

CALVING TRAITS

Direct CE	0.0 +94% Rel	Maternal CE	1.0 +73% Rel
-----------	--------------	-------------	--------------



AltaSWAG

65003136264642 | HO5103

OCD ALTASWAG-ET
 MODESTY X MOHAWK X ROBUST
 HO840M003136264642 | DOB 4/18/2016
 aAa 324 | DMS 345,234 | EFI 10.6 %
 Kappa-Casein: AE Beta-Casein: A1A2
 Genetic Codes: TC TD TL TP TR TV TY
 AHDB DAIRY & HOLSTEIN UK 12/2022- DAUGHTER PROVEN



PLI **+506** Rel 94%

CONFORMATION (55 UK Daughters in 12 UK Herds) (940 D | 178 H 95%R US)

	-2	-1	0	1	2		
Stature						+0.25	Tall
Chest Width						+1.91	Wide
Body Depth						+0.76	Deep
Angularity						+0.19	Open Rib
Rump Angle						+0.09	Low Pins
Thurl Width						+0.15	Wide
R. Legs-S View						+0.42	Sickled
Foot Angle						+0.06	Steep
Locomotion						+1.22	Excellent
F. Udder Att.						+1.48	Tight
R. Udder Ht.						+1.22	Very high
Udder Cleft						-0.86	Broken
Udder Depth						+0.71	Above hock
F. Teat Place						-0.37	Outside
R. Teat Place						-1.22	Apart
Teat Length						-0.04	Short
Teat Sideview						-0.72	Close

Alta UK abide by the ADHB & Holstein UK established code of Advertising. Bulls tested free for genetic recessives will not show these codes for formatting reasons. Prices are subject to change. Terms and conditions apply.

CONFORMATION

Type Merit	1.52	Mammary	0.99
Legs & Feet	1.53	Rel	87%

PRODUCTION (447 UK Daughters in 53 UK Herds)(4594D | 604H 46%US)

Milk	+687 Kgs	+99% Rel
Protein	+26.6 Kgs	+0.04%
Fat	+40.2 Kgs	+0.14%

HEALTH & MANAGEMENT

Lifespan	-6	Ease of Milk	+1.18
Fertility	-0.5	Temperament	+0.1
SCC	-4	Maintenance	14
MAST	+1	Dairy Carcass	-1.0
Calf Survival	+0.6	TB Advantage	1.1 95%
Lameness Advantage	+3.5	Gestation Length	0 99%
Digital Dermatitis	+0.7	Feed Advantage	-46 61%
Healthy Cow	+57 87%	Enviro Cow	+1.9 96%

CALVING TRAITS

Direct CE	-0.5 +85% Rel	Maternal CE	1.4 +75% Rel
-----------	---------------	-------------	--------------



CONVENTIONAL ONLY AVAILABLE

AltaCABOT

65003143383922 | HO5731

BOMAZ ALTACABOT-ET
 AltaTOPSHOT X CABRIOLET X MOGUL
 HO840M003143383922 | DOB 4/23/2017
 aAa 354 | DMS 561,135 | EFI 11.2 %
 Kappa-Casein: BE Beta-Casein: A1A2
 Genetic Codes: TC TD TL TP TR TV TY
 AHDB DAIRY & HOLSTEIN UK 12/2022- DAUGHTER PROVEN



PLI **+765** Rel 87%

CONFORMATION (45 UK Daughters in 15 UK Herds) (159 D | 42 H 95%R US)

	-2	-1	0	1	2		
Stature						-1.64	Short
Chest Width						-0.16	Narrow
Body Depth						-1.19	Shallow
Angularity						-1.10	Coarse
Rump Angle						-0.78	High Pins
Thurl Width						-0.86	Narrow
R. Legs-S View						+1.04	Sickled
Foot Angle						-0.59	Low
Locomotion						+1.51	Excellent
F. Udder Att.						-0.10	Loose
R. Udder Ht.						+0.13	Very high
Udder Cleft						+0.68	Strong
Udder Depth						+0.32	Above hock
F. Teat Place						+0.06	Close
R. Teat Place						+0.43	Close
Teat Length						-1.10	Short
Teat Sideview						+0.61	Apart

Alta UK abide by the ADHB & Holstein UK established code of Advertising. Bulls tested free for genetic recessives will not show these codes for formatting reasons. Prices are subject to change. Terms and conditions apply.

CONFORMATION

Type Merit	0.63	Mammary	0.70
Legs & Feet	1.31	Rel	84%

PRODUCTION (141 UK Daughters in 35 UK Herds)(863D | 123H 81% US)

Milk	+523 Kgs	+95% Rel
Protein	+28.2 Kgs	+0.12%
Fat	+40.5 Kgs	+0.22%

HEALTH & MANAGEMENT

Lifespan	76	Ease of Milk	-0.80
Fertility	+1.2	Temperament	+0.3
SCC	-21	Maintenance	-15
MAST	-2	Dairy Carcass	1.7
Calf Survival	+2.2	TB Advantage	-5.9 92%
Lameness Advantage	+2.6	Gestation Length	-3 99%
Digital Dermatitis	+0.3	Feed Advantage	+162 59%
Healthy Cow	+171 77%	Enviro Cow	+3.6 91%

CALVING TRAITS

Direct CE	0.2 +86% Rel	Maternal CE	0.9 +64% Rel
-----------	--------------	-------------	--------------

CREATE MORE Alta 4-EVENT COWS



Improve the health of your herd with our full lineup of products and services to create trouble-free, healthy, productive cows.



Genetics

- A customised genetic plan
- Sexed, conventional, and beef semen
- High fertility CONCEPT PLUS sires



Alta COW WATCH

- Activity monitor neck tags
- 24/7 monitoring of rumination, eating and activity



Alta BLUE LINK

- Next generation of dairy software
- Real-time connection with DairyComp
- Exclusive access through Alta



CCT Colostrum

- Whole Bovine Colostrum
- Free from TB, EBL, BVDV, IBR, Johne's, E.Coli, Salmonella, Brucella
- GMP+ FSA Assured



RumiLife® CAL24™

- A 2-bolus calcium supplement
- One, simple administration
- For all cows >Lact 1



BAXTER™ Udder Care

- Pre and post dips and spray
- Rich with moisturizers
- Low drip formula, reduces waste



Support from Alta

- Technology and protocol guidance
- Share key insights
- Partner to set goals

Work with your Alta advisor to create a customised plan and include these products in your daily protocols.

Alta UK

Contact your local team today or reach out to Tracey at
02920 617770 | tracey.gretton@altagenetics.com
info@altagenetics.com | uk.altagenetics.com/products



The companies within the URUS family provide dairy and beef producers around the world with cutting-edge products, genetics and herd management information.



Alta Ltd

Fountain Court, 2 Victoria Square
St Albans, Hertfordshire AL1 3TF | Tel: 01727884534
info@altagenetics.com | uk.altagenetics.com