


Spring 2024

ALTA BxD DIRECTORY





CALF'S CHOICE TOTAL® 100

- ◆ **Whole Bovine Colostrum** - not skimmed or reconstructed from components.
- ◆ **High in Colostral Fat** - important energy source required by calves immediately after birth.
- ◆ **Safe and Effective** - free of disease-causing organisms, tested for safety and efficacy.
- ◆ **Convenient** - Easily mixes in under 15 seconds.
- ◆ **3-year shelf life**
- ◆ **GMP+ FSA Assured** 



TO ORDER: CALL 01995 601359

BLACK ANGUS



STEP UP

- ▲ High marbling genetics
- ▲ Calving ease sire
- ▲ Sires moderate framed females

QUAKER HILL STEP UP | 011AN01421
Herdbook No. US 19379557 | **AI code** AA1759
Birthdate 03-18-2018 | **Tattoo** 8ST8

PRODUCTION								CARCASS			
	CED	BW	WW	YW	RADG	DMI	YH	CW	MARB	RE	FAT
EPD	+8	+1.2	+62	+114	+.23	+.151	+.3	+.44	+.95	+.30	+.068
Acc	.35	.56	.44	.37	.31	.31	.44	.41	.38	.37	.33
% Rank	40	50	55	50	65	80	70	55	20	90	95
\$VALUES							American Angus Association 02/2024				
	\$W	\$F	\$G	\$B	\$AXH	\$AXJ					
EPD	+49	+89	+59	+148	+79	+35					
% Rank	80	55	30	40	60	70					

G A R Big Step K715

Quaker Hill Primrose 5UP3

G A R Sure Fire

Chair Rock Prophet 3131

EXAR Upshot 0562B

Thomas Primrose 2475

BLACK ANGUS



HOMELAND

PEAK HOMELAND | 011AN02386

Herdbook No. US 20298287

Birthdate 02-11-2022 | Tattoo K1003

- ▲ A calving ease prospect by Home Town out of Susanna H161
- ▲ Curve bending genetics
- ▲ Big time MARB, REA, and high \$Values

PRODUCTION								CARCASS			
	CED	BW	WW	YW	RADG	DMI	YH	CW	MARB	RE	FAT
EPD	+8	+1.2	+62	+114	+.23	+.151	+.3	+.44	+.95	+.30	+.068
Acc	.35	.56	.44	.37	.31	.31	.44	.41	.38	.37	.33
% Rank	40	50	55	50	65	80	70	55	20	90	95
\$VALUES							American Angus Association 02/2024				
	\$W	\$F	\$G	\$B	\$AXH	\$AXJ					
EPD	+49	+89	+59	+148	+79	+35					
% Rank	80	55	30	40	60	70					

G A R Home Town

Pine View Susanna H161

G A R Ashland

Chair Rock Sure Fire 6095

Baldrige Alternative E125

Pine View Susanna D087

BLACK ANGUS



DELIVERANCE

▲ Curve bending genetics by Salvation out of 3159

▲ Top of the breed for CW, MARB and REA

▲ \$Values at the top of the breed

PEAK DELIVERANCE | 011AN02387

Herdbook No. US 20298288

Birthdate 02-14-2022 | **Tattoo** K1004

PRODUCTION								CARCASS			
	CED	BW	WW	YW	RADG	DMI	YH	CW	MARB	RE	FAT
EPD	+11	+1.6	+80	+137	+.25	+1.80	+.4	+79	+1.44	+1.26	+.031
Acc	.33	.50	.42	.37	.32	.32	.45	.40	.37	.37	.36
% Rank	15	60	10	15	60	90	65	4	4	1	75
\$VALUES											
	\$W	\$F	\$G	\$B	\$AXH	\$AXJ					
EPD	+76	+122	+100	+222	+246	+235					
% Rank	10	4	2	1	1	1					

American Angus Association 02/2024

SG Salvation

Baldrige Alternative E125

MGR JP Rita 7037

G A R Ashland 3159

G A R Ashland

G A R Momentum 2156

BLACK ANGUS



GRENADE

HW GRENADE

Herdbook No. UK546977102535

AI Code AA1778 | **Birthdate** 03-01-2019

- ▲ Impressive Growth and Muscle Index
- ▲ Smooth fleshing sire with excellent Muscling
- ▲ Suitable for breeding suckler replacements

	CED	BW	200d WT	400d WT	600d WT	CW	REA	FAT	BY	IMF	TERM	REPLACE
EPD	-.1	+4.0	+45	+77	+101	+61	+4.7	-.7	+.9	+.5	+36	+56
Acc	56%	68%	75%	74%	71%	61%	52%	59%	51%	47%		

The Aberdeen-Angus Cattle Society February 2024

Netherton Kracker P790

Mohmar Gammer Eulanne N181

S A V Brave 8320

Netherton Karama K574

S A V Solid Gold 9187

Kitewood Gammer Eulanne K122

BLACK ANGUS



HIGHWAY

DRUMHILL LORD HIGHWAY V271

Herdbook No. UK959342703271

AI Code AA1784 | **Birthdate** 04-24-2019

- ▲ Lord Highway is bred from a successful and proven cow family
- ▲ Tremendous indexes for both Terminal and Maternal
- ▲ Suitable for breeding replacements for the suckler herd

	CED	BW	200d WT	400d WT	600d WT	CW	REA	FAT	BY	IMF	TERM	REPLACE
EPD	-2.0	+4.9	+49	+90	+105	+61	+4.1	-2.5	+1.2	+3	+42	+49
Acc	56%	78%	72%	70%	67%	59%	51%	57%	51%	50%		

The Aberdeen-Angus Cattle Society February 2024

Wedderlie Tarquin L383

Drumhill Lady Heather P366

Papa Equator 2928

HF Tibbie 86K

Bleack Prince Consort A286

Bleack Lady Heather J169

BLACK ANGUS



HOMESTEAD

PEAK HOMESTEAD | 011AN02382

Herdbook No. US 20267924

Birthdate 01-24-2022 | Tattoo K1013

- ▲ A calving ease prospect by Home Town out of Susanna H161
- ▲ Curve bending genetics
- ▲ Big time MARB and high \$Values

PRODUCTION								CARCASS			
	CED	BW	WW	YW	RADG	DMI	YH	CW	MARB	RE	FAT
EPD	+12	+.5	+80	+142	+.28	+1.78	+.5	+62	+1.29	+1.08	-.030
Acc	.34	.49	.42	.37	.33	.33	.44	.41	.38	.37	.33
% Rank	10	35	10	10	35	90	.44	25	10	5	10
\$VALUES							American Angus Association 02/2024				
	\$W	\$F	\$G	\$B	\$AXH	\$AXJ					
EPD	+74	+103	+95	+198	+220	+215					
% Rank	15	20	4	10	3	3					

G A R Home Town

Pine View Susanna H161

G A R Ashland

Chair Rock Sure Fire 6095

Baldrige Alternative E125

Pine View Susanna D087

BLACK ANGUS



CLASSIC

- ▲ High powered Iconic son
- ▲ Dam is the famous Vintage Rita 0404
- ▲ Breed leading carcass EPDs and \$Values

PEAK CLASSIC | 011AN02379

Herdbook No. US 20323412

Birthdate 04-01-2022 | Tattoo K1018

PRODUCTION								CARCASS			
	CED	BW	WW	YW	RADG	DMI	YH	CW	MARB	RE	FAT
EPD	+9	+2.0	+97	+162	+.32	+1.71	+.9	+89	+1.56	+1.07	+.059
Acc	.36	.54	.45	.41	.35	.35	.48	.43	.40	.39	.35
% Rank	30	70	1	2	10	90	15	1	2	10	95
\$VALUES							American Angus Association 02/2024				
	\$W	\$F	\$G	\$B	\$AXH	\$AXJ					
EPD	+89	+132	+101	+233	+248	+249					
% Rank	1	2	2	1	1	1					

DB Iconic G95

Musgrave 316 Stunner

DB Ms Discovery D13

Vintage Rita 0404

GB Fireball 672

44 Rita 6291

PARAGON

SANKEY PARAGON | 011AN02294

Herdbook No. US 19833548

Birthdate 08-15-2020 | **Tattoo** 030

- ▲ Straight bred GAR pedigree
- ▲ Calving ease prospect with breed leading growth and carcass merit
- ▲ Nearly all \$Values rank at the top of the breed

PRODUCTION								CARCASS			
	CED	BW	WW	YW	RADG	DMI	YH	CW	MARB	RE	FAT
EPD	+13	-.2	+81	+141	+.30	+1.68	+1.0	+66	+.94	+1.06	-.016
Acc	.35	.52	.44	.39	.33	.34	.47	.42	.39	.38	.35
% Rank	10	20	10	10	20	85	10	15	25	10	20
\$VALUES											
	\$W	\$F	\$G	\$B	\$AXH	\$AXJ					
EPD	+82	+108	+76	+183	+176	+195					
% Rank	3	15	15	15	15	3					

American Angus Association 02/2024



G A R Phoenix

G A R Sure Fire

G A R Prophet N744

G A R Ashland R328

G A R Ashland

G A R 100X R5

AMPLIFY

KEYSTONE AMPLIFY | 011AN02303

Herdbook No. US 19574654

Birthdate 11-19-2019 | **Tattoo** 147G

- ▲ Curve bending genetics by Salvation out of 3159
- ▲ Top of the breed for CW, MARB and REA
- ▲ \$Values at the top of the breed

PRODUCTION								CARCASS			
	CED	BW	WW	YW	RADG	DMI	YH	CW	MARB	RE	FAT
EPD	+15	-2.2	+67	+123	+.26	+1.87	+.7	+50	+.67	+.97	-.008
Acc	.35	.50	.43	.39	.34	.34	.44	.41	.39	.38	.35
% Rank	3	3	40	35	50	95	30	50	50	15	25
\$VALUES											
	\$W	\$F	\$G	\$B	\$AXH	\$AXJ					
EPD	+75	+91	+60	+151	+139	+147					
+14	15	45	35	40	30	20					

American Angus Association 02/2024

SydGen Enhance

SydGen Exceed 3223

SydGen Rita 2618

PF 5682 Henrietta Pride 0533

S A V Bismarck 5682

Sitz Henrietta Pride 643T

BOOST

CG BOOST | 011AN02302

Herdbook No. US 19973427

Birthdate 09-28-2020 | Tattoo 0061

- ▲ Superior performance sire ranking at the top of the breed for WW, YW and CW
- ▲ Excellent carcass merit with MARB and REA at +1.00
- ▲ High \$Values with \$F, \$B and \$C in the top 1%

PRODUCTION								CARCASS			
	CED	BW	WW	YW	RADG	DMI	YH	CW	MARB	RE	FAT
EPD	+5	+4.4	+94	+166	+39	+1.39	+1.7	+91	+93	+1.05	-.011
Acc	.34	.51	.43	.38	.33	.33	.44	.40	.36	.36	.32
% Rank	60	95	1	1	1	70	1	1	25	10	20
\$VALUES								American Angus Association 02/2024			
	\$W	\$F	\$G	\$B	\$AXH	\$AXJ					
EPD	+67	+145	+75	+220	+155	+202					
% Rank	30	1	15	2	20	4					

Byergo Black Magic 3348

Silveiras Conversion 8064

Byergo Elia Cupcake 5900

G A R 100X 2195

G A R 100X

G A R Daybreak 3193

YOUR FUTURE HERD IS INSIDE.

IT'S NOT JUST A SEMEN TANK.

It's your livelihood, your passion, and most importantly, the future of your herd. Inside every tank of Alta semen is a genetic plan and strategy, carefully customized with guidance from a trusted Alta advisor.



Include RumiLife® CAL24™ in your fresh cow protocol

IMMEDIATE AND EXTENDED RELEASE CALCIUM



GET FAST ACTING AND SUSTAINED RELEASE CALCIUM ABSORPTION

- ♦ Calcium chloride acts rapidly to increase calcium absorption through the rumen wall.
- ♦ Calmin, a steady and highly absorbable combination of calcium and magnesium regulates calcium absorption over time.
- ♦ Vitamin D helps facilitate active calcium transfer in the small intestine.

SAVE TIME & LABOR WITH ONLY ONE TREATMENT

- ♦ RumiLife CAL24 requires just one, simple administration of two boluses. This means you eliminate the hassle of handling fresh cows a second time to administer another dose.

RumiLife® CAL24™ nutritional supplement is a uniquely formulated calcium bolus to help promote proper calcium levels in dairy cattle.

Scan to
learn more!





AltaSUPERBLUE

- ▲ Low birth weight, easy calving
- ▲ Short gestation length
- ▲ High Fertility Sire

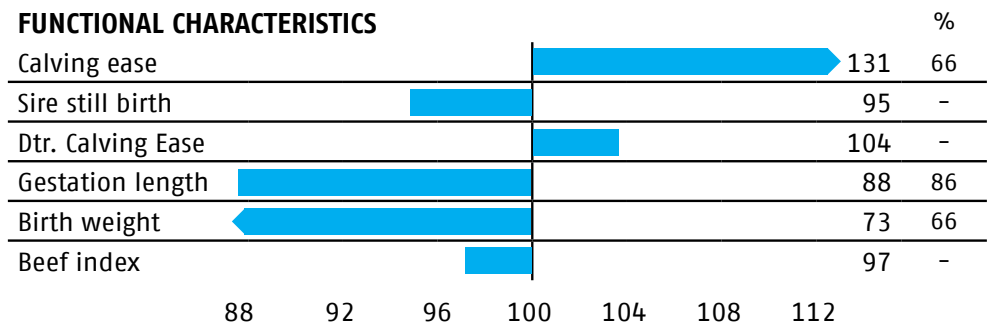
VAN DE PLASHOEVE ALTA SUPERBLUE |

Herdbook No. NL 898157947 | **AI code** BB1836

Birthdate 02-22-2019

Sire: JAAP VAN PHAENOCRYST | **MGS:** DANDY DU TILLEUL V

FUNCTIONAL CHARACTERISTICS



CRV Coop 12/2023

BELGIAN BLUE



AltaKJELD

- ▲ Very handsome white bull
- ▲ Short gestation length
- ▲ Superior Calving Ease Sire

VAN DE PLASHOEVE ALTAKJELD | 011BB00003

Herdbook No. NL 944457429 | AI code BB1655

Birthdate 13-02-2017

Sire: REMCO VAN 'T ZANDEIND | MGS: ALTES

FUNCTIONAL CHARACTERISTICS

			%
Calving ease		134	83
Sire Still Birth		96	46
Dtr. Calving Ease		103	-
Gestation length		97	90
Birth weight		71	83
Beef index		102	-

88 92 96 100 104 108 112

CRV Coop 12/2023



AltaRICO

- ▲ Low birth weight, easy calving
- ▲ Short gestation length
- ▲ High Fertility Sire
- ▲ Top Quality Calves

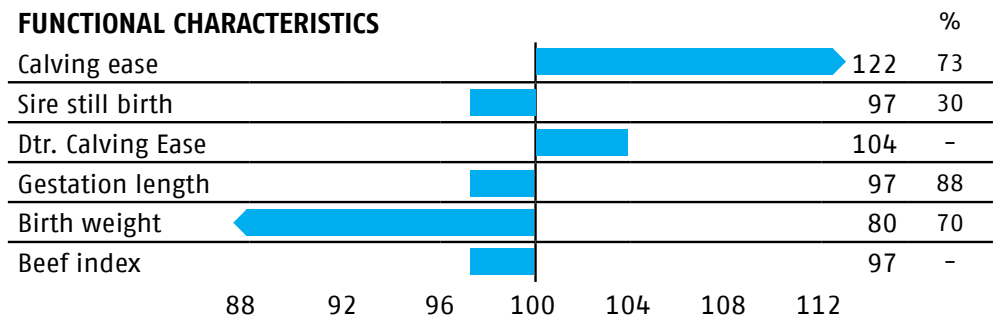
VAN DE PLASHOEVE ALTARICO | 011BB00005

Herdbook No. NL 898157839 | **AI code** BB1728

Birthdate 22-06-2018

Sire: OBLIGEANT DE BELLE EAU | **MGS:** UNICUS VAN PHAENOCRYST

FUNCTIONAL CHARACTERISTICS



CRV Coop 12/2023



AltaSILVERBLU

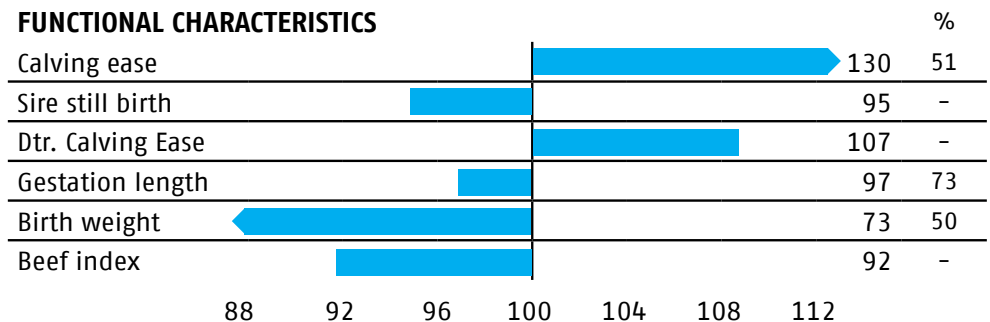
VAN DE PLASHOEVE ALTASILVERBLU | 011BB00011

Herdbook No. NL 566458354 | **AI code** BB1943

Birthdate 05-18-2020

Sire: UGO VAN BOSZICHT | **MGS:** ADAMO

FUNCTIONAL CHARACTERISTICS



CRV Coop 12/2023



AltaBLUESKY

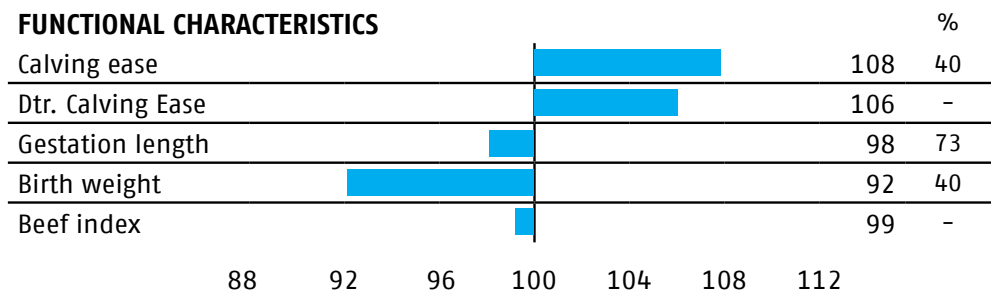
VAN DE PLASHOEVE ALTABLUESKY | 011BB00009

Herdbook No. NL 566458183 |

Birthdate 02-24-2020

Sire: IRISH COFFEE | MGS: ALTES

FUNCTIONAL CHARACTERISTICS



CRV Coop 12/2023

Alta NIGHTBLUE

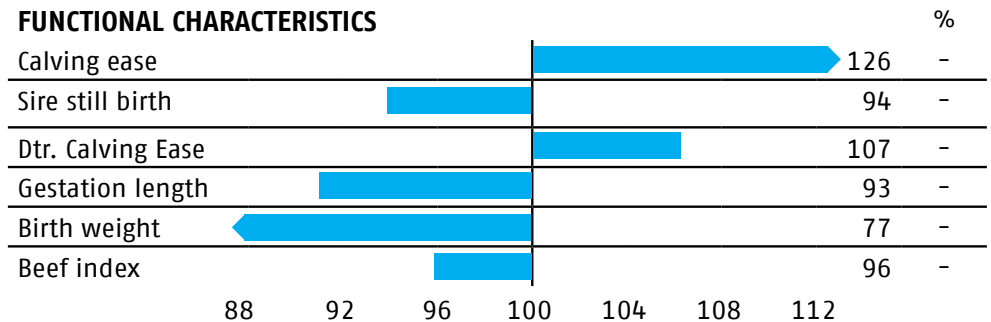
ALTA NIGHTBLUE | 011BB

Herdbook No. NL 586358928 | AI code

Birthdate 05-22-2022

Sire: BRUNO VAN DE PLASHOEVE | MGS: DELICIEUX DU LORIERS

FUNCTIONAL CHARACTERISTICS



CRV Coop 12/2023

Knowledge Is Power.

The Next Generation of Dairy Software

- Empowers you to make more strategic genetic decisions
- Directs the course for your best future herd using *YOUR real-time data* directly from DairyComp

Valuable Alerts & Genetic Insights for Maximum Profitability

- Real-time connection with DairyComp helps you adapt your semen use and mating scenarios to right-size your future heifer inventory

Precision Drives Performance

- Guide your decisions toward maximum return on investment using your herd data and current economics
- Accounts for all the factors that affect your future profitability

**ACTIVATE Alta BLUE LINK and partner with your
Alta advisor to predict your best future herd today.**





EQUALISER

LENAGH EQUALISER

Herdbook No. SKW09-004 | **AI code** LN2271

Birthdate 07-14-2009

- ▲ 98% of progeny are average and above
- ▲ Sired by the famous French sire Dauphin, noted for maternal traits
- ▲ Equaliser is an excellent balance bull, displaying superb muscling with impressive top line and square hindquarters

	BW	CE	MCE	GL	200d WT	400d WT	MUSCLE	FAT	BEEF \$	SC	DOC
EPD	+2.20	-2.20	-.20	-.60	+6	+38	+4.80	+.40	+47	-.2	+1.60
Acc	88%	88%	68%	95%	88%	73%	68%	60%	81%	64%	57%

The British Limousin Cattle Society December 2023

0485 Dauphin

Romeo
Ombrette

Kype Ulay

Wverbank Nassau
Kype Olive

LIMOUSIN



IFOR

AMPERTAINE IFOR

Herdbook No. MGD13-8897 | **AI code** LN2553

Birthdate 09-26-2013

- ▲ Superb Limousin sire by the 38,000 gns sire, Ampertaine Foreman
- ▲ Excellent well balanced bull with impressive muscle and shape
- ▲ Suitable for pedigree breeding
- ▲ Widespread Calving Survey completed

	BW	CE	MCE	GL	200d WT	400d WT	MUSCLE	FAT	BEEF \$	SC	DOC
EPD	-1.20	-1.10	-.20	-2.70	+7	+28	+30	+0	+37	-.8	-3.10
Acc	87%	89%	69%	96%	90%	81%	75%	69%	84%	72%	65%

The British Limousin Cattle Society December 2023

Ampertaine Foreman

Wilodge Cerberus

Ampertaine Bathsheba

Ampertaine Vera

Procters Rocco

Shannas Sarah



LIMBOBEN

- ▲ Calving ease sire
- ▲ Recommended to increase shape, length and style
- ▲ Healthy calves with low mortality rates

LIMBOBEN

Herdbook No. 36-15-366-906 | **AI code** LM5145

Birthdate 05-26-2003

	BW	CE	MCE	GL	200d WT	400d WT	MUSCLE	FAT	BEEF \$	SC	DOC
EPD	-.50	-1.50	-.60	-3.50	+5	+4	+1.10	+0	+17	-.3	+1.10
Acc	47%	53%	42%	53%	35%	34%	23%	20%	42%	25%	18%

The British Limousin Cattle Society December 2023

Homere

Danton

Ecue

Chacha Ben

Achile

Valse Ben



UMAR

RAHONEY UMAR

Herdbook No. MDS03-012 | **AI code** LN0132

Birthdate 05-26-2003

- ▲ Progeny from Umar are excellent in terms of conformation and muscle development
- ▲ Umar progeny are 97% Average to Above Average on conformation
- ▲ Suitable for crossing onto Holstein and suckler cows

	BW	CE	MCE	GL	200d WT	400d WT	MUSCLE	FAT	BEEF \$	SC	DOC
EPD	+2.50	+.50	-.90	-.10	+7	+17	+3.10	-.50	+21	+.30	+2.30
Acc	91%	91%	77%	96%	93%	88%	85%	82%	90%	79%	65%

The British Limousin Cattle Society December 2023

Ronick Oklahoma

Broadmeadows Cannon

Ronick Hainsi

Rohoney Martha

Shire Handsome

Rahoney Faith



HIGH HOPE

BALLYLOUGH HIGH HOPE

Herdbook No. 06835 | **AI code** Y9045

Birthdate 12-18-2019

Pedigree Southfield Poldark 2nd X Ballylough Brunetta

- ▲ A very stylish Belted Galloway bull with breed character and shape
- ▲ Exciting new bloodlines, including the famous Karandrea Ronaldo
- ▲ Expect quality progeny from High Hope



Alta COW WATCH

Repro, health & welfare

THE RELIABLE AND PROVEN WAY TO IMPROVE YOUR HERD'S REPRO, HEALTH, & WELFARE

Get 24/7 rumination, eating, and activity monitoring
paired with expert support from the Alta team.



"Alta COW WATCH has enabled us to become more efficient through massively improving our fertility. In turn, this has led to reduced semen usage, healthier cows and increased milk production."

*Dan Harries
Velindre Farm*

INTERESTED IN MORE DETAILS?

Contact 01995 600196
info@altagenetics.com
or call your trusted Alta advisor today!

LONGHORN



EVENING ALL

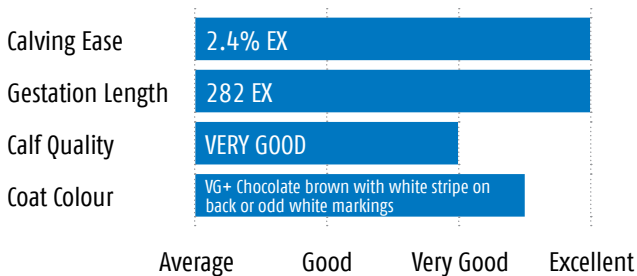
▲ "We think this bull is a game changer for the breed and a very attractive proposition for our Dairy Farmer customers."

POINTER EVENING ALL

Herdbook No. 33903/S01244 | **AI code** LH0917

Birthdate 02-27-2018

Pedigree Aberdeen Nik EX90 x Gorse Uncle Gary





PARIS

WOODPARK PARIS

Herdbook No. MBM0081113 | **AI Code** CH3980

Birthdate 07-09-2019

- ▲ Combines performance with style & shape
- ▲ Exceptional Eye Muscle and Retail Beef Values
- ▲ Top 5% EBV Values for Terminal and Replacement Index

	CED	CE DTRS	GEST	BW	200d WT	400d WT	600d WT
EPD	+5.9	-7.7	+2	+4.8	+43	+75	+91
Acc	48%	43%	53%	69%	66%	65%	61%

	CW	REA	FAT	BY	IMF	TERM	REPLACE
EPD	+64	+4.8	-.6	+2.2	-.1	+75	+67
Acc	53%	42%	49%	45%	38%		

The British Charolais Cattle Society February 2024

Deeside Gulliver

Esperanto

Blakestown Venus

Woodpark Faith

Rumsden Tsar

Woodpark Regina

STRADA

HOPEWELL STRADA 48H | 011CH01033

Herdbook No. PMC808144

Birthdate 02-20-2020

	CE	BW	VW	YW	CWT	REA	FAT	MARB	TSI
EPD	+6.6	+.3	+76	+154	+33	+.59	+.030	+.09	+293.28
Acc	.23	.31	.25	.22	.09	.08	.06	.06	
% Rank	80	75	15	3	8	55	90	55	3

American Charolais Association February 2024

JSR Estrada 52E

Pleasant Dawn Chisum 216A

JSR Jasmine 167C

Main Lanza Verminnion 647D

LT Lanza 1427 PLD

Main Verminnion 925W



The world's most trusted dairy herd management tool

Make cost-effective decisions on every cow with DairyComp Unlimited:

- Powerful on-premise DairyComp software
- Free access to dashboards and partner integrations on VAS Pulse Platform
- Free access to cowside data entry via mobile app on iOS and Android
- Unlimited phone and email support from 7 AM to 7 PM CST, Monday – Friday

CALL
TODAY

to start managing
your herd with
DairyComp Unlimited.



LACKEY BOY

- ▲ Displays style and quality throughout
- ▲ Above average indexes for growth and muscle
- ▲ Excellent Direct Calving Ease score

LISRACE LACKEY BOY 11TH

Herdbook No. UK9481927 12133 | **AI code** H9305

Birthdate 04-14-2017

	CED	CE DTRS	GEST	BW	200d WT	400d WT	600d WT
EPD	-2.2	+2.2	+.9	+2.6	+27	+56	+75
Acc	40%	35%	48%	73%	64%	65%	68%

	CW	REA	FAT	BY	IMF	TERM	REPLACE
EPD	+47	+3.6	+.1	+1.1	+.1	+32	+39
Acc	52%	40%	44%	42%	35%		

Hereford Cattle Society January 2024

Knockmountagh Master

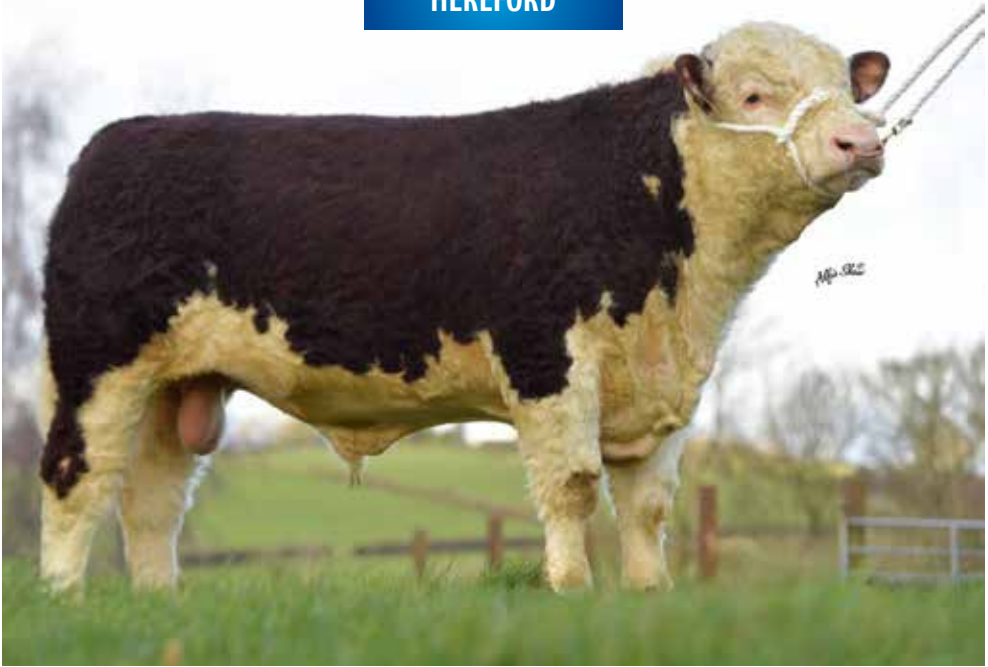
Grianan Firecracker

Knockmountagh Carmel

Lisrace Bridge Girl VIII

Castledaly Crusader AI

Lisrace Bridge Girl II



SILAS

GRACELAND 1 SILAS

Herdbook No. UK9240248 09644 | **AI code** H9260

Birthdate 07-09-2019

- ▲ Style, shape and performance all combine into Silas
- ▲ Top priced sire at the spring 2021 sale
- ▲ Well above average Growth and Muscling

	CED	CE DTRS	GEST	BW	200d WT	400d WT	600d WT
EPD	-1.7	-1.1	+1.5	+4.2	+40	+78	+89
Acc	40%	35%	40%	72%	66%	70%	66%

	CW	REA	FAT	BY	IMF	TERM	REPLACE
EPD	+56	+2.8	-.3	+.7	-.1	+35	+42
Acc	52%	43%	46%	44%	38%		

Hereford Cattle Society January 2024

Blakesley 1 Nathan

Aland Leopold

Blakesley 1 Joy

Graceland 1 Lydia

Greenyards 1 Dougie

Graceland 1 Emma

HEREFORD



TIMELINE

- ▲ Polled Hereford sire
- ▲ Calving ease sire
- ▲ Fast growth rates

SQUARE-D PF TIMELINE 237W | 011HP01007

Herdbook No. CHA PC02930348 | **AI code** H9314

Birthdate 02-28-2009

	CED	BW	WW	YW	DMI
EPD	+1.0	+4.8	+52	+78	+.4
Acc	.29	.47	.41	.41	.14

	CW	FAT	REA	MARB	BMI\$	BII\$	CHB\$
EPD	+71	+.021	+.46	+.04	+253	+313	+101
Acc	.10	.10	.10	.10			

American Hereford Association February 2024

Triple-A 14M Stocky 34S

Square-D Ellie 37T

Rh Standard Star Lad 14M

MVF 656 Std Domio Lass 271G

Wilgor 55K Northeastern 01 2N

Square-D Jaeden 37P



HANNIBAL

SHACON HANNIBAL

Herdbook No. S003142 | **AI Code** SG1290

Birthdate 09-04-2016

- ▲ Hannibal's sire is the well-known Kilbride Farm Delboy 12
- ▲ Hannibal's dam, Omorga Marcia, is by the record priced Corrick Kentucky Kid out of Cleenagh Daffodil

	CED	CE DTRS	GEST	BW	200d WT	400d WT	600d WT
EPD	-9.3	-10.9	+ .4	+3.7	+36	+62	+73
Acc	87%	79%	80%	94%	88%	90%	82%

	CW	REA	FAT	BY	IMF	TERM	REPLACE
EPD	+50	+5.2	-1.2	+2.8	-1.0	+83	+76
Acc	75%	62%	73%	70%	67%		

The British Simmental Cattle Society February 2024

Kilbride Farm Delboy 12

Crugmelyn Brenin 10
Kilbride Farm Dora 40B

Omorga Marcia

Corrick Kentucky Kid
Cleenagh Daffodil



INTERNATIONAL

SLIEVENAGH INTERNATIONAL 17
Herdbook No. M094872
AI Code SG1307 | Birthdate 07-07-2017

- ▲ Homozygous Polled
- ▲ Low Birth Weights
- ▲ Suitable for breeding replacements
- ▲ Outcross pedigree for pure breeding

	CED	CE DTRS	GEST	BW	200d WT	400d WT	600d WT
EPD	-17.6	-1.3	-1.5	+6.9	+63	+93	+100
Acc	74%	57%	65%	82%	64%	57%	57%

	CW	REA	FAT	BY	IMF	TERM	REPLACE
EPD	+58	-	+5	+5	-	+88	+91
Acc	37%	-	30%	28%	-		

The British Simmental Cattle Society February 2024





ISAAC

OMORGA ISAAC 17

Herdbook No. M093767 | **AI Code** SG1278

Birthdate 02-12-2017

- ▲ Exciting sire displaying style, conformation and muscling
- ▲ Sired by Curaheen Earp, 5 star Carcass Sire (ICBF)
- ▲ Top 5% of the Breed for Terminal Index (Breedplan)

	CED	CE DTRS	GEST	BW	200d WT	400d WT	600d WT
EPD	-2.9	-.3	-.5	+4.4	+47	+86	+91
Acc	82%	64%	80%	88%	79%	76%	73%

	CW	REA	FAT	BY	IMF	TERM	REPLACE
EPD	+64	+6.1	+.6	+1.2	+.3	+107	+126
Acc	59%	41%	49%	45%	39%		

The British Simmental Cattle Society February 2024

Curaheen Earp

Curaheen Vio ET
Blackford Siskin

Omorga Destiny

Ashland Brandy 10
Omorga Daffodil 14th ET



MISSILE

X-T BLACK MISSILE 138F | 011SM02055

Herdbook No. 3594131 | AI Code SG1366

Birthdate 04-16-2018

- ▲ Male sexed semen available
- ▲ Black simmental sire
- ▲ Breed leading calving ease scores
- ▲ Shapely calves
- ▲ High weaning weights



CONCEPT PLUS BxD
High fertility beef x dairy sires

	CE	BW	WW	YW	CW	REA	FAT	MARB	API	TI
EPD	+9.8	+2.8	+74.7	+98.6	+15.4	+1.3	-.069	-.28	+96.0	+64.6
Acc	.41	.44	.45	.43	.38	.38	.34	.38	-	-
% Rank	75	85	65	90	95	2	70	99	99	99

American Simmental Association February 2024

MRL Missile 138C

Come As U R Red Rocket

MRL Miss 2423Z

TSN MS Predator 53B

Wheatland Predator 922W

TSN MS Fortune 47X

SHORTHORN



SCOTSMAN

ANNANWATER SCOTSMAN

Herdbook No. 563802157 | **AI code** BS0885

Birthdate 03-16-2009

- ▲ Scotsman is a fine example of the Shorthorn breed, displaying length, natural fleshing and good muscling
- ▲ Recommended for both crossing and pure breeding
- ▲ Progeny are impressing local producers

	CED	CE DTRS	GEST	BW	200d WT	400d WT	600d WT
EPD	-1.0	+ .9	+3.7	+2.5	+5	+16	+30
Acc	69%	64%	74%	80%	72%	68%	68%

	CW	REA	FAT	BY	IMF	TERM	REPLACE
EPD	+17	+ .5	+0	-.2	+ .6	+17	+12
Acc	53%	35%	51%	46%	43%		

The Beef Shorthorn Cattle Society February 2024

Trunley Barley 098 P

Cairnsmore Zo Lucky Heather P

Trunley Timber 056

Trunley Ury Maid Nancy P

Fearn Scotsman P

Cairnsmore White Heather P

SHORTHORN



PARNASSUS

CRAIGFADDOCK PARNASSUS

Herdbook No. 673804292 | **AI code** BS0718

Birthdate 09-06-2020

- ▲ Parnassus is a very stylish young Beef Shorthorn bull with great potential
- ▲ Dam classified EX92, and a full sister sold at 12,000 gns
- ▲ Northern Irish Herds Competition Young Bull of the Year 2021

	CED	CE DTRS	GEST	BW	200d WT	400d WT	600d WT
EPD	-5.9	+1.5	+1.6	+2.5	+20	+38	+46
Acc	54%	45%	60%	67%	64%	60%	60%

	CW	REA	FAT	BY	IMF	TERM	REPLACE
EPD	+37	+3.6	-.5	+1.4	-.1	+32	+29
Acc	51%	39%	51%	47%	43%		

The Beef Shorthorn Cattle Society February 2024

Leonard of Upsall

Knockenjig Margo 2

Dingo of Upsall

Augusta X822 of Upsall

Meonhill Charlie Chaplin

Knockenjig Margo D1808

EPD TERMINOLOGY

General Terms

EPD – Expected Progeny Difference: The expected differences in performance of a sire's progeny when compared to the average progeny of all sires evaluated within the breed. Based on actual performance, progeny performance and relatives' performance.

ACC – Accuracy: The reliability placed on the EPD.

Production EPDs

CE, CED – Calving Ease Direct: The difference in percentage of unassisted births, with a higher value indicating greater calving ease in first-calf heifers.

BW – Birth Weight: The birth weights of a bull's progeny when compared to the breed average, in pounds.

WW – Weaning Weight: The adjusted weaning weights of a bull's progeny when compared to the breed average, in pounds.

YW – Yearling Weight: The adjusted yearling weights of a bull's progeny when compared to breed average, in pounds.

ADG – Average Daily Gain (Simmental): The difference in pounds of daily gain expected between animals' progeny during the post weaning feeding period.

RADG – Residual Average Daily Gain (Angus): The adjusted amount of post weaning gain in future progeny, in pounds, given a constant amount of feed consumed.

DMI – Dry Matter Intake (Angus, Red Angus, Hereford): Expressed in pounds per day, DMI is a predictor of difference transmitting ability for feed intake during the postweaning phase, compared to that of other sires.

YH – Yearling Height (Angus): Predicts a sire's ability to transmit yearling height, expressed in inches, compared to that of other sires.

Carcass EPD's

CW, CWT – Carcass Weight (Angus, Simmental, Charolais, Red Angus): The adjusted carcass weights of a sire's progeny, expressed in pounds.

MB, MARB, IMF – Marbling: A predictor of the difference in a sire's progeny for percent marbling score or percent intramuscular fat in the ribeye muscle compared to other sires.

REA, RE – Ribeye Area: Adjusted ribeye area of a sire's progeny, measured in square inches.

FAT, BF – Back Fat: The adjusted twelfth rib fat thickness of a sire's progeny, expressed in inches.

SHR – Shear Force (Simmental): A measure of tenderness, it is the pounds of force required to shear a steak.

YG – Yield Grade (Simmental): Expressed as a deviation of Yield Grade units where negative values are desirable.

Angus \$Value Definitions

The \$Value is an estimate of how future progeny of each sire are expected to perform, on average, compared to progeny of other sires if the sires were randomly mated to cows and if calves were exposed to the same environment.

Weaned Calf Value (\$W) – expressed in dollars per head, to predict profitability differences in progeny due to genetics from birth to weaning. The underlying objective being producers will retain 20% of the female progeny as replacements and sell the rest of the cull females and their male counterparts as feeder calves. Traits included are: birth weight, weaning weight, milk, and mature cow weight.

Feedlot Value (\$F) – expressed in dollars per head, to predict profitability differences in progeny due to genetics for postweaning feedlot merit compared to the progeny of other sires. The underlying objective assumes producers will retain ownership of cattle through the feedlot phase and sell fed cattle on a carcass weight basis, but with no consideration of premiums or discounts for quality and yield grade. Traits contributing to this index: yearling weight (gain), carcass weight and dry-matter intake.

Grid Value (\$G) – expressed in dollars per carcass, to predict profitability differences in progeny due to genetics for carcass grid merit compared to progeny of other sires. The underlying objective assumes producers will market cattle on an above-industry-average carcass grid. Traits included in the index are: carcass weight, marbling, ribeye area, and fat.

Beef Value (\$B) – expressed in dollars per carcass, to predict profitability differences in progeny due to genetics for postweaning and carcass traits. This terminal index assumes commercial producers wean all male and female progeny, retain ownership of these animals through the feedlot phase and market these animals on a carcass grid. Traits included in the index are: yearling weight, dry-matter intake, marbling, carcass weight, ribeye area and fat.

Angus-On-Dairy \$Value Indexes

These values are terminal crossbreeding indexes to estimate how future beef-on-dairy progeny of each Angus sire are expected to perform, on average, compared to beef-on-dairy progeny of other Angus sires if the sires were randomly mated and beef-on-dairy calves were exposed to the same environment. These terminal indexes are expressed in dollars per head, to predict profitability differences in progeny due to genetic traits weight by appropriated economics of each Angus sire when mated to Holstein or Jersey females.

Angus-On-Holstein (\$AxH) – The underlying breeding objective assumes Angus bulls will be mated to Holstein females to produce Angus-dairy crossbred calves to be fed and marketed on a quality-based grid. Traits included are: calving ease, growth from birth through the feeding phase, feed intake, dressing percent, yield grade, quality grade, muscling, and height.

Angus-On-Jersey (\$AxJ) – The underlying breeding objective assumes Angus bulls will be mated to Jersey females to produce Angus-dairy crossbred calves to be fed and marketed on a quality-based grid. Traits included are: calving ease, growth from birth through the feeding phase, feed intake, dressing percent, yield grade, quality grade, and muscling.



Scan for more info



Is beef semen part of your dairy farm's strategic breeding plan?

If so, consider when you sell and how you market your beef x dairy cross animals. You could be leaving a premium on the table if you don't select the right beef genetics to target your situation and future goals.

We are proud to offer an extensive selection of beef genetics to fit *your* needs.

Our multi-breed lineup of beef bulls are each selected for in-demand characteristics such as fertility, calving ease, cut-out value, and growth performance.

Work with your trusted Alta advisor to determine the right beef genetics to match your customized breeding strategy.



Visit uk.altagenetics.com/products or contact
01995 600196 | info@altagenetics.com