

Holstein Directory

APRIL 2024



Alfa Hailed #107 | Franciosi Holsteins, Italy



Alta COW WATCH

Repro, health & welfare

Why Alta COW WATCH?

When you choose Alta COW WATCH, you get access to the state-of-the-art cloud-based herd management platform – **Nedap Now.**

- ▲ Monitor and access data 24 / 7 / 365 from anywhere
- ▲ Attain seamless integration with herd management systems
- ▲ Access more historical data over longer periods of time
- ▲ Create customized work lists with relevant insights for each team member
- ▲ Allow selective access to data for team members and consultants
- ▲ Combine data in one spot for improved analysis and insights
- ▲ Group insights, such as heat stress, so you can adjust management practices and get the most out of your herd
- ▲ Improve heat detection and repro performance
- ▲ Quickly identify anestrus cows or potential pregnancy losses
- ▲ Find sick cows sooner so you can treat them before they become problems

Scan to learn more



ASK ABOUT OUR TRADE IN OPTIONS!

info@altagenetics.com

THE TOP 10's Select the right bulls for you!

£ PLI	
AltaMORPHEUS	863
AltaORVAR	840
AltaCALABRIA	824
AltaVANDYKE	819
AltaBEMINE	816
AltaSEVERUS	811
AltaKALON	800
AltaHAJI	788
AltaCROWNWILD	787
AltaOHTANI	779

TPI	
AltaMACARIO	3147
AltaMASQUERADE	3093
AltaFIRST TIME	3091
AltaOVERTAKE	3085
AltaBARBARO	3082
AltaGOLDENSTORM	3080
AltaGARRIX	3078
AltaTOPGUNZ	3070
AltaVANDYKE	3064
AltaEXQUISITE	3053

NM\$	
AltaMASQUERADE	1196
AltaMAINSTREAM	1187
AltaSEGUNDO	1181
AltaKALON	1169
AltaMACARIO	1161
AltaGOLDENSTORM	1160
AltaBEMINE	1131
AltaTOPGUNZ	1127
AltaORVAR	1125
AltaSEVERUS	1122

DWP\$	
AltaMORPHEUS	1487
AltaGOLDENSTORM	1374
AltaMAINSTREAM	1258
AltaYOUBETCHA	1258
AltaORVAR	1244
AltaSALMON	1240
AltaAMICK	1255
AltaMASQUERADE	1221
AltaKALON	1208
AltaCALABRIA	1207

FAT KGS	
AltaVANDYKE	53.5
AltaCALABRIA	50.3
AltaGARRIX	49.3
AltaSEGUNDO	48.7
AltaSALMON	48.5
AltaKEVLOW	48.5
AltaBEMINE	48.1
AltaOBADA	48.0
AltaZEMINI	47.3
AltaMORPHEUS	46.6

FAT PC	
AltaREGULUS	0.36
AltaAMICK	0.36
AltaFIRST TIME	0.36
AltaMONTU-PP	0.32
AltaSILVEROAK	0.32
AltaEXEMPLARY	0.31
AltaMAMADI	0.29
AltaLAJOY	0.26
AltaLINGUIST	0.22
AltaMORPHEUS	0.21

PROTEIN KGS	
AltaCALABRIA	38.3
AltaMACARIO	37.3
AltaBEMINE	36.3
AltaTOPGUNZ	35.3
AltaGARRIX	35.2
AltaVANDYKE	34.8
AltaFARUKKO	34.6
AltaORVAR	33.7
AltaZEMINI	33.6
AltaZAREK	32.5

PROTEIN PC	
AltaMAMADI	0.20
AltaREGULUS	0.17
AltaAMICK	0.15
AltaKALON	0.15
AltaCALABRIA	0.15
AltaSULIEN	0.13
AltaFIRST TIME	0.13
AltaGOLDENSTORM	0.13
AltaORVAR	0.12
AltaDARUDE	0.11

MILK	
AltaFARRUKO	1045
AltaWINX	1040
AltaRUTILANT RED	1035
AltaZAREK	971
AltaPOWERBUCK	949
AltaKAMARA RED	946
AltaZAZU	937
AltaSEGUNDO	932
AltaMACARIO	902
AltaAVITUS	895

SCC %	
AltaAMICK	-31
AltaSOLACE	-31
AltaBEMINE	-31
AltaCRAZED	-29
AltaSILVEROAK	-27
AltaKAMARA RED	-26
AltaSEVERUS	-25
AltaRUTILANT RED	-25
AltaVANDYKE	-25
AltaZINGLER	-25

LIFESPAN	
AltaPOWERBUCK	174
AltaZINGLER	162
AltaMORPHEUS	159
AltaAMICK	149
AltaOHTANI	149
AltaDARUDE	146
AltaEXQUISITE	143
AltaSANDRO	140
AltaSEVERUS	137
AltaDOUBLOON	137

DAUGHTER FERTILITY	
AltaZINGLER	15.3
AltaSOLACE	14.6
AltaSEVERUS	13.7
AltaMAMADI	12.8
AltaDARUDE	12.5
AltaAMICK	12.0
AltaORVAR	12.0
AltaCROWNWILD	11.5
AltaKALON	10.5
AltaMORPHEUS	10.1

ROBOT SUITED SIRES*	
AltaVANDYKE	
AltaBEMINE	
AltaHAJI	
AltaMACARIO	
AltaMASQUERADE	
AltaAVITUS	
AltaAMICK	
AltaZINGLER	
AltaPOWERBUCK	
AltaSULIEN	

TYPE MERIT	
AltaKAMARA RED	1.99
AltaWOODSIDE	1.93
AltaFUNLOVIN	1.91
AltaGET RICH	1.73
AltaWINX	1.63
AltaSULIEN	1.57
AltaENTRANCED	1.52
AltaPOWERBUCK	1.49
AltaTRACKSTER	1.48
AltaGULLIVER	1.46

MAMMARY	
AltaTRACKSTER	2.33
AltaTOP RED	2.12
AltaKAMARA RED	2.12
AltaHAILED	2.08
AltaWOODSIDE	2.07
AltaBARBAZZA	2.06
AltaQUIQUE	1.79
AltaINDIGO	1.77
AltaPOWERBUCK	1.71
AltaFUNLOVIN	1.65

LEGS & FEET	
AltaSULIEN	1.64
AltaANTONIO	1.47
AltaTRACKSTER	1.47
AltaRUTILANT RED	1.46
AltaENTRANCED	1.43
Alta LAS RED	1.39
AltaINDIGO	1.28
AltaKAMARA RED	1.10
AltaFIRSTTIME	1.10
AltaFUNLOVIN	1.04

*sorted by PLI



PLI **+717** Rel 68%

AltaAMICK

65003224956015 | HO7499

PEAK ALTAAMICK-ET
 AltaZAZZLE X PURSUIT X AltaROBSON
 HO840M003224956015 | DOB 1/5/2021
 aAa 234 | DMS 456,246 | EFI 12.4 %
 Kappa-Casein: AB Beta-Casein: A1A2
 Genetic Codes: TC TD TE TL TP TR TV TY
 AHDB Dairy & Holstein UK 04/2024 - GENOMIC



CONFORMATION (0 UK Daughters in 0 UK Herds)

	-2	-1	0	1	2		
Stature						+0.42	Tall
Chest Width						-1.11	Narrow
Body Depth						-2.11	Shallow
Angularity						-0.12	Coarse
Rump Angle						+0.42	Low Pins
Thurl Width						+0.32	Wide
R. Legs-S View						-0.11	Straight
Foot Angle						0.00	Low
Locomotion						+1.08	Excellent
F. Udder Att.						+0.86	Tight
R. Udder Ht.						+0.13	Very high
Udder Cleft						-0.20	Broken
Udder Depth						+1.16	Above hock
F. Teat Place						+0.45	Close
R. Teat Place						-0.35	Apart
Teat Length						+0.29	Long
Teat Sideview						-0.77	Close

Alta UK abide by the ADHB & Holstein UK established code of Advertising. Bulls tested free for genetic recessives will not show these codes for formatting reasons. Prices are subject to change. Terms and conditions apply.

CONFORMATION

Type Merit	0.29	Mammary	0.59
Legs & Feet	0.81	Rel	58%

PRODUCTION (0 UK Daughters in 0 UK Herds)

Milk	+195 Kgs	+74% Rel
Protein	+18.2 Kgs	+0.14%
Fat	+38.2 Kgs	+0.36%

HEALTH & MANAGEMENT

Lifespan	149	Ease of Milk	-0.37
Fertility	+12.0	Temperament	-0.3
SCC	-31	Maintenance	-4
MAST	-3	Dairy Carcass	0.0
Calf Survival	-0.2	TB Advantage	3.4 50%
Lameness Advantage	+2.7	Gestation Length	-3 98%
Digital Dermatitis	+0.7	Feed Advantage	+61 46%
Healthy Cow	+282 58%	Enviro Cow	+3.2 70%

CALVING TRAITS

Direct CE	-0.1 +72% Rel	Maternal CE	1.1 +54% Rel
-----------	---------------	-------------	--------------



PLI **+724** Rel 67%

AltaAVITUS

65003215425267 | HO6789

PEAK ALTAAVITUS-ET
 FASTBALL X MARIUS X AltaROBSON
 HO840M003215425267 | DOB 2/27/2020
 aAa 243 | DMS 561,126 | EFI 12.6 %
 Kappa-Casein: BE Beta-Casein: A1A2
 Genetic Codes: TC TD TE TL TP TR TV TY
 AHDB Dairy & Holstein UK 04/2024 - GENOMIC



CONFORMATION (0 UK Daughters in 0 UK Herds)

	-2	-1	0	1	2		
Stature						-1.17	Short
Chest Width						+0.33	Wide
Body Depth						-1.37	Shallow
Angularity						-0.76	Coarse
Rump Angle						+0.05	Low Pins
Thurl Width						-0.21	Narrow
R. Legs-S View						-0.12	Straight
Foot Angle						+0.36	Steep
Locomotion						+0.85	Excellent
F. Udder Att.						+0.09	Tight
R. Udder Ht.						+0.25	Very high
Udder Cleft						-0.53	Broken
Udder Depth						+0.39	Above hock
F. Teat Place						-1.86	Outside
R. Teat Place						-1.73	Apart
Teat Length						-0.41	Short
Teat Sideview						+0.35	Apart

Alta UK abide by the ADHB & Holstein UK established code of Advertising. Bulls tested free for genetic recessives will not show these codes for formatting reasons. Prices are subject to change. Terms and conditions apply. Proud to use independent data powered by AHDB Dairy.

CONFORMATION

Type Merit	0.40	Mammary	0.35
Legs & Feet	0.87	Rel	55%

PRODUCTION (0 UK Daughters in 0 UK Herds)

Milk	+895 Kgs	+73% Rel
Protein	+31.9 Kgs	+0.03%
Fat	+31.6 Kgs	-0.05%

HEALTH & MANAGEMENT

Lifespan	119	Ease of Milk	+1.26
Fertility	+3.4	Temperament	+1.1
SCC	-23	Maintenance	-8
MAST	-1	Dairy Carcass	1.4
Calf Survival	+2.5	TB Advantage	2.7 43%
Lameness Advantage	+1.8	Gestation Length	-3 99%
Digital Dermatitis	+0.3	Feed Advantage	+153 45%
Healthy Cow	+186 62%	Enviro Cow	+3.6 69%

CALVING TRAITS

Direct CE	-0.2 +74% Rel	Maternal CE	0.4 +52% Rel
-----------	---------------	-------------	--------------



PLI **+658** Rel 66%

AltaBARBARO

65003252198119 | HO7929

PEAK ALTABARBARO-ET

AltaALANZO X AltaJUMP CUT X LIONEL

HO840M003252198119 | DOB 10/28/2022

aAa 243 | DMS 561,126 | EFI 12.7 %

Kappa-Casein: BB Beta-Casein: A2A2

Genetic Codes: TC TD TE TL TP TR TV TY

AHDB Dairy & Holstein UK 04/2024 - GENOMIC



CONFORMATION (0 UK Daughters in 0 UK Herds)

	-2	-1	0	1	2		
Stature						+0.43	Tall
Chest Width						-0.83	Narrow
Body Depth						-1.26	Shallow
Angularity						+1.23	Open Rib
Rump Angle						-0.61	High Pins
Thurl Width						+0.04	Wide
R. Legs-S View						-1.14	Straight
Foot Angle						+0.42	Steep
Locomotion						+0.29	Excellent
F. Udder Att.						+1.41	Tight
R. Udder Ht.						+1.72	Very high
Udder Cleft						-0.13	Broken
Udder Depth						+1.50	Above hock
F. Teat Place						+0.09	Close
R. Teat Place						+0.17	Close
Teat Length						-1.25	Short
Teat Sideview						+0.35	Apart

Alta UK abide by the ADHB & Holstein UK established code of Advertising. Bulls tested free for genetic recessives will not show these codes for formatting reasons. Prices are subject to change. Terms and conditions apply.

CONFORMATION

Type Merit	1.11	Mammary	1.51
Legs & Feet	0.48	Rel	53%

PRODUCTION (0 UK Daughters in 0 UK Herds)

Milk	+580 Kgs	+73% Rel
Protein	+26.1 Kgs	+0.08%
Fat	+38.9 Kgs	+0.18%

HEALTH & MANAGEMENT

Lifespan	104	Ease of Milk	+1.02
Fertility	+4.1	Temperament	0.0
SCC	-11	Maintenance	-4
MAST	-1	Dairy Carcass	0.0
Calf Survival	+1.5	TB Advantage	3.3 41%
Lameness Advantage	+1.9	Gestation Length	-1 55%
Digital Dermatitis	+0.1	Feed Advantage	+98 45%
Healthy Cow	+164 57%	Enviro Cow	+3.3 68%

CALVING TRAITS

Direct CE	0.1 +63% Rel	Maternal CE	0.8 +49% Rel
-----------	--------------	-------------	--------------



PLI **+816** Rel 66%

AltaBEMINE

65003247843781

NEW

PEAK ALTABEMINE-ET

AltaZEMINI X AltaPLINKO X CRIMSON

HO840M003247843781 | DOB 6/18/2022

aAa 243 | DMS 126,123 | EFI 11.9 %

Kappa-Casein: BB Beta-Casein: A2A2

Genetic Codes: TC TD TE TL TP TR TV TY

AHDB Dairy & Holstein UK 04/2024 - GENOMIC



CONFORMATION (0 UK Daughters in 0 UK Herds)

	-2	-1	0	1	2		
Stature						+0.59	Tall
Chest Width						-0.25	Narrow
Body Depth						-0.65	Shallow
Angularity						+0.60	Open Rib
Rump Angle						+1.62	Low Pins
Thurl Width						-0.26	Narrow
R. Legs-S View						+0.09	Sickled
Foot Angle						-0.18	Low
Locomotion						-0.69	Poor
F. Udder Att.						+0.01	Tight
R. Udder Ht.						-0.26	Very Low
Udder Cleft						-1.42	Broken
Udder Depth						-0.31	Below Hock
F. Teat Place						-0.68	Outside
R. Teat Place						-0.99	Apart
Teat Length						+1.08	Long
Teat Sideview						-0.40	Close

Alta UK abide by the ADHB & Holstein UK established code of Advertising. Bulls tested free for genetic recessives will not show these codes for formatting reasons. Prices are subject to change. Terms and conditions apply. Proud to use independent data powered by AHDB Dairy.

CONFORMATION

Type Merit	-0.74	Mammary	-0.51
Legs & Feet	-0.81	Rel	53%

PRODUCTION (0 UK Daughters in 0 UK Herds)

Milk	+773 Kgs	+73% Rel
Protein	+36.3 Kgs	+0.12%
Fat	+48.1 Kgs	+0.19%

HEALTH & MANAGEMENT

Lifespan	64	Ease of Milk	+0.21
Fertility	+5.8	Temperament	0.0
SCC	-31	Maintenance	2
MAST	-3	Dairy Carcass	0.9
Calf Survival	0.0	TB Advantage	1.1 45%
Lameness Advantage	+1.2	Gestation Length	-1 49%
Digital Dermatitis	+0.2	Feed Advantage	+128 45%
Healthy Cow	+153 56%	Enviro Cow	+3.9 69%

CALVING TRAITS

Direct CE	0.6 +63% Rel	Maternal CE	1.2 +53% Rel
-----------	--------------	-------------	--------------



PLI **+824** Rel 66%

AltaCALABRIA

65003247843666 | H07794

PEAK ALTACALABRIA-ET
AltaALL ACCESS X AltaZAZZLE X AltaEXPLOSION
H0840M003247843666 | DOB 5/18/2022

aAa 423 | DMS 561,126 | EFI 11.9 %
Kappa-Casein: AB Beta-Casein: A2A2
Genetic Codes: TC TD TE TL TP TR TV TY
AHDB Dairy & Holstein UK 04/2024 - GENOMIC



CONFORMATION (0 UK Daughters in 0 UK Herds)

	-2	-1	0	1	2		
Stature						+0.14	Tall
Chest Width						-0.89	Narrow
Body Depth						-1.31	Shallow
Angularity						+0.45	Open Rib
Rump Angle						+2.49	Low Pins
Thurl Width						-0.21	Narrow
R. Legs-S View						-0.39	Straight
Foot Angle						+0.45	Steep
Locomotion						+0.77	Excellent
F. Udder Att.						+0.08	Tight
R. Udder Ht.						-0.05	Very Low
Udder Cleft						-1.02	Broken
Udder Depth						+0.32	Above hock
F. Teat Place						-0.77	Outside
R. Teat Place						-0.63	Apart
Teat Length						-1.30	Short
Teat Sideview						+0.01	Apart

Alta UK abide by the ADHB & Holstein UK established code of Advertising. Bulls tested free for genetic recessives will not show these codes for formatting reasons. Prices are subject to change. Terms and conditions apply.

CONFORMATION

Type Merit	0.08	Mammary	-0.17
Legs & Feet	0.57	Rel	53%

PRODUCTION (0 UK Daughters in 0 UK Herds)

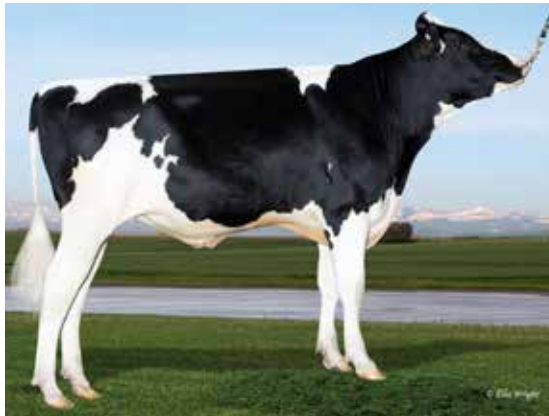
Milk	+780 Kgs	+73% Rel
Protein	+38.3 Kgs	+0.14%
Fat	+50.3 Kgs	+0.21%

HEALTH & MANAGEMENT

Lifespan	61	Ease of Milk	-0.73
Fertility	+4.0	Temperament	+0.4
SCC	-14	Maintenance	-6
MAST	-1	Dairy Carcass	0.5
Calf Survival	+0.3	TB Advantage	2.8 44%
Lameness Advantage	+2.0	Gestation Length	-3 55%
Digital Dermatitis	+0.4	Feed Advantage	+125 45%
Healthy Cow	+119 56%	Enviro Cow	+4.0 69%

CALVING TRAITS

Direct CE	0.3 +63% Rel	Maternal CE	0.5 +53% Rel
-----------	--------------	-------------	--------------



PLI **+774** Rel 66%

AltaDARUDE

011H016444

PEAK ALTADARUDE-ET
HIGH ENERGY X NO EXCUSE X REDROCK
H0840M003243355665 | DOB 6/2/2022
aAa 243 | DMS 234,246 | EFI 12.9 % | RHA 99%
Kappa-Casein BB | Beta-Casein A1A2
Genetic Codes TC TD TE TL TP TR TV TY
AHDB DAIRY & HOLSTEIN UK 04/2024- GENOMIC



CONFORMATION (0 UK Daughters in 0 UK Herds)

	-2	-1	0	1	2		
Stature						+0.38	Tall
Chest Width						-0.57	Narrow
Body Depth						-0.54	Shallow
Angularity						+1.10	Open Rib
Rump Angle						+1.76	Low Pins
Thurl Width						+1.17	Wide
R. Legs-S View						+1.32	Sickled
Foot Angle						-1.36	Low
Locomotion						-0.07	Poor
F. Udder Att.						+1.38	Tight
R. Udder Ht.						+1.18	Very high
Udder Cleft						+0.65	Strong
Udder Depth						+1.07	Above hock
F. Teat Place						+1.58	Close
R. Teat Place						+1.47	Apart
Teat Length						-0.29	Short
Teat Sideview						+0.08	Apart

Alta UK abide by the ADHB & Holstein UK established code of Advertising. Bulls tested free for genetic recessives will not show these codes for formatting reasons. Prices are subject to change. Terms and conditions apply. Proud to use independent data powered by AHDB Dairy.

CONFORMATION

Type Merit	+0.89	Mammary	+1.43
Legs & Feet	+0.02	Rel	53%

PRODUCTION (0 UK Daughters in 0 UK Herds)

Milk	+542 Kgs	73% Rel
Protein	+27.4 Kgs	+0.11%
Fat	+35.7 Kgs	+0.16%

HEALTH & MANAGEMENT

Lifespan	+146	Ease of Milk	+1.54
Fertility	+12.5	Temperament	+0.5
SCC	-9	Maintenance	-2
Mastitis	-1	Dairy Carcass	+0.8
Calf Survival	+3.1	TB Advantage	+2.0 44%
Lameness Advantage	+3.4	Gestation Length	-2 48%
Digital Dermatitis	+8	Feed Advantage	+84 45%
Healthy Cow	+268 56%	Enviro Cow	+3.5 68%

CALVING TRAITS

Direct CE	-0.1 63% Rel	Maternal CE	+1.0 53% Rel
-----------	--------------	-------------	--------------



PLI **+697** Rel 66%

AltaDOUBLOON

65003229908344 | H07518

PEAK ALTADOUBLOON-ET
 AltaWHEELHOUSE X PURSUIT X MEDLEY
 HO840M003229908344 | DOB 8/23/2021
 aAa 423 | DMS 561,126 | EFI 12.3 %
 Kappa-Casein: AA Beta-Casein: A2A2
 Haplotype: HMW1 | Genetic Codes: MW TC TD TL TP TR TV TY
 AHDB Dairy & Holstein UK 04/2024 - GENOMIC



CONFORMATION (0 UK Daughters in 0 UK Herds)

	-2	-1	0	1	2		
Stature						-0.43	Short
Chest Width						+0.84	Wide
Body Depth						-0.44	Shallow
Angularity						+0.26	Open Rib
Rump Angle						+1.19	Low Pins
Thurl Width						+1.06	Wide
R. Legs-S View						+0.30	Sickled
Foot Angle						-1.30	Low
Locomotion						+1.38	Excellent
F. Udder Att.						-0.01	Loose
R. Udder Ht.						+0.88	Very high
Udder Cleft						-0.64	Broken
Udder Depth						-0.15	Below Hock
F. Teat Place						+0.05	Close
R. Teat Place						-0.65	Apart
Teat Length						+0.18	Long
Teat Sideview						+1.58	Apart

Alta UK abide by the ADHB & Holstein UK established code of Advertising. Bulls tested free for genetic recessives will not show these codes for formatting reasons. Prices are subject to change. Terms and conditions apply.

CONFORMATION

Type Merit	1.14	Mammary	0.90
Legs & Feet	0.97	Rel	55%

PRODUCTION (0 UK Daughters in 0 UK Herds)

Milk	+660 Kgs	+73% Rel
Protein	+24.6 Kgs	+0.03%
Fat	+34.9 Kgs	+0.09%

HEALTH & MANAGEMENT

Lifespan	137	Ease of Milk	+0.32
Fertility	+10.0	Temperament	+0.1
SCC	-15	Maintenance	0
MAST	-1	Dairy Carcass	1.6
Calf Survival	+0.4	TB Advantage	1.9 44%
Lameness Advantage	+2.3	Gestation Length	-1 55%
Digital Dermatitis	+0.6	Feed Advantage	+102 45%
Healthy Cow	+229 57%	Enviro Cow	+3.3 68%

CALVING TRAITS

Direct CE	0.5 +64% Rel	Maternal CE	1.1 +52% Rel
-----------	--------------	-------------	--------------



PLI **+620** Rel 66%

AltaENDYMION

65003235932957 | H07516

PEAK ALTAENDYMION-ET
 AltaWHEELHOUSE X AltaZAZZLE X POSITIVE
 HO840M003235932957 | DOB 8/16/2021
 aAa 243 | DMS 346,456 | EFI 11.6 %
 Kappa-Casein: BB Beta-Casein: A1A2
 Haplotype: HMW1 | Genetic Codes: MW TC TD TL TP TR TV TY
 AHDB Dairy & Holstein UK 04/2024 - GENOMIC



CONFORMATION (0 UK Daughters in 0 UK Herds)

	-2	-1	0	1	2		
Stature						+0.43	Tall
Chest Width						-0.19	Narrow
Body Depth						-0.36	Shallow
Angularity						+1.43	Open Rib
Rump Angle						+1.42	Low Pins
Thurl Width						+1.72	Wide
R. Legs-S View						+0.55	Sickled
Foot Angle						-0.03	Low
Locomotion						+0.22	Excellent
F. Udder Att.						+0.08	Tight
R. Udder Ht.						+0.84	Very high
Udder Cleft						-0.15	Broken
Udder Depth						+0.01	Above hock
F. Teat Place						+0.38	Close
R. Teat Place						+0.32	Close
Teat Length						-1.08	Short
Teat Sideview						-0.22	Close

Alta UK abide by the ADHB & Holstein UK established code of Advertising. Bulls tested free for genetic recessives will not show these codes for formatting reasons. Prices are subject to change. Terms and conditions apply. Proud to use independent data powered by AHDB Dairy.

CONFORMATION

Type Merit	0.64	Mammary	0.59
Legs & Feet	0.21	Rel	55%

PRODUCTION (0 UK Daughters in 0 UK Herds)

Milk	+921 Kgs	+73% Rel
Protein	+30.8 Kgs	+0.01%
Fat	+40.3 Kgs	+0.04%

HEALTH & MANAGEMENT

Lifespan	76	Ease of Milk	+0.24
Fertility	+2.8	Temperament	+0.2
SCC	-10	Maintenance	0
MAST	-1	Dairy Carcass	1.0
Calf Survival	-0.1	TB Advantage	3.2 44%
Lameness Advantage	+2.9	Gestation Length	-1 55%
Digital Dermatitis	+0.6	Feed Advantage	+63 45%
Healthy Cow	+116 56%	Enviro Cow	+3.0 68%

CALVING TRAITS

Direct CE	0.0 +64% Rel	Maternal CE	1.1 +52% Rel
-----------	--------------	-------------	--------------



PLI **+690** Rel 68%

AltaEXQUISITE

65003224955987 | H07367

PEAK ALTAEXQUISITE-ET
 AltaZAZZLE X PURSUIT X AltaROBSON
 H0840M003224955987 | DOB 1/1/2021
 aAa 234 | DMS 234,345 | EFI 12.8 %
 Kappa-Casein: AB Beta-Casein: A1A2
 Haplotype: HH6C | Genetic Codes: TC TD TE TL TP TR TV TY
 AHDB Dairy & Holstein UK 04/2024 - GENOMIC



CONFORMATION (0 UK Daughters in 0 UK Herds)

	-2	-1	0	1	2	
Stature						+0.01 Tall
Chest Width						-1.06 Narrow
Body Depth						-1.64 Shallow
Angularity						+0.73 Open Rib
Rump Angle						+1.56 Low Pins
Thurl Width						+0.08 Wide
R. Legs-S View						+0.22 Sickled
Foot Angle						+0.17 Steep
Locomotion						+1.23 Excellent
F. Udder Att.						+0.46 Tight
R. Udder Ht.						+0.68 Very high
Udder Cleft						-0.29 Broken
Udder Depth						+0.56 Above hock
F. Teat Place						-0.18 Outside
R. Teat Place						-0.86 Apart
Teat Length						-0.32 Short
Teat Sideview						-0.48 Close

Alta UK abide by the ADHB & Holstein UK established code of Advertising. Bulls tested free for genetic recessives will not show these codes for formatting reasons. Prices are subject to change. Terms and conditions apply.

CONFORMATION

Type Merit	0.83	Mammary	0.67
Legs & Feet	0.95	Rel	58%

PRODUCTION (0 UK Daughters in 0 UK Herds)

Milk	+493 Kgs	+74% Rel
Protein	+24.0 Kgs	+0.09%
Fat	+34.1 Kgs	+0.16%

HEALTH & MANAGEMENT

Lifespan	143	Ease of Milk	+1.75
Fertility	+9.6	Temperament	+0.1
SCC	-12	Maintenance	-8
MAST	-1	Dairy Carcass	0.4
Calf Survival	+1.6	TB Advantage	4.0 50%
Lameness Advantage	+2.2	Gestation Length	-3 55%
Digital Dermatitis	+0.4	Feed Advantage	+109 46%
Healthy Cow	+229 58%	Enviro Cow	+3.4 70%

CALVING TRAITS

Direct CE	0.0 +76% Rel	Maternal CE	0.9 +54% Rel
-----------	--------------	-------------	--------------



PLI **+792** Rel 66%

AltaFARRUKO

011H016832

NEW

PEAK ALTAFARRUKO-ET
 ZAPPY X AltaMAGNIFIQUE X TORRO
 H0840M003247835590 | DOB 9/14/2022
 aAa 342 | DMS 345,456 | EFI 12.1 % | RHA 99%
 Kappa-Casein AB | Beta-Casein A1A2
 Haplotype HMW1 | Genetic Codes MW TC TD TL TP TR TV TY
 AHDB DAIRY & HOLSTEIN UK 04/2024 - GENOMIC



CONFORMATION (0 UK Daughters in 0 UK Herds)

	-2	-1	0	1	2	
Stature						-0.14 Short
Chest Width						-0.12 Narrow
Body Depth						-0.83 Shallow
Angularity						+0.16 Open Rib
Rump Angle						+1.19 Low Pins
Thurl Width						+0.23 Wide
R. Legs-S View						+1.22 Sickled
Foot Angle						-0.46 Low
Locomotion						-0.07 Poor
F. Udder Att.						+1.46 Tight
R. Udder Ht.						+0.37 Very high
Udder Cleft						+0.22 Strong
Udder Depth						+0.67 Above hock
F. Teat Place						+1.18 Close
R. Teat Place						+0.71 Close
Teat Length						-0.78 Short
Teat Sideview						-0.88 Close

Alta UK abide by the ADHB & Holstein UK established code of Advertising. Bulls tested free for genetic recessives will not show these codes for formatting reasons. Prices are subject to change. Terms and conditions apply. Proud to use independent data powered by AHDB Dairy.

CONFORMATION

Type Merit	+0.49	Mammary	+0.99
Legs & Feet	-0.21	Rel	53%

PRODUCTION (0 UK Daughters in 0 UK Herds)

Milk	+1045 Kgs	73% Rel
Protein	+34.6 Kgs	0.00%
Fat	+38.6 Kgs	-0.04%

HEALTH & MANAGEMENT

Lifespan	+134	Ease of Milk	+0.37
Fertility	+8.1	Temperament	-0.3
SCC	-23	Maintenance	-3
Mastitis	-3	Dairy Carcass	+1.6
Calf Survival	+0.4	TB Advantage	+2.6 43%
Lameness Advantage	+2.2	Gestation Length	-3 49%
Digital Dermatitis	+0.6	Feed Advantage	+121 45%
Healthy Cow	+228 56%	Enviro Cow	+3.7 68%

CALVING TRAITS

Direct CE	+0.6 62% Rel	Maternal CE	+1.0 52% Rel
-----------	--------------	-------------	--------------



PLI **+700** Rel 68%

AltaFIRSTTIME

65003225323219 | HO7401

FB ALTAFIRSTTIME-ET
 AltaZAZZLE X ACURA X ROLAN
 HO840M003225323219 | DOB 7/16/2021
 aAa 213 | DMS 246,234 | EFI 12.7 %
 Kappa-Casein: AB Beta-Casein: A1A2
 Haplotype: HH6C | Genetic Codes: TC TD TE TL TP TR TV TY
 AHDB Dairy & Holstein UK 04/2024 - GENOMIC



CONFORMATION

Type Merit	0.80	Mammary	0.74
Legs & Feet	1.10	Rel	57%

PRODUCTION (0 UK Daughters in 0 UK Herds)

Milk	+269 Kgs	+74% Rel
Protein	+20.3 Kgs	+0.13%
Fat	+41.3 Kgs	+0.36%

HEALTH & MANAGEMENT

Lifespan	113	Ease of Milk	+0.57
Fertility	+7.6	Temperament	+0.1
SCC	-11	Maintenance	-14
MAST	-1	Dairy Carcass	0.0
Calf Survival	+1.6	TB Advantage	2.8 48%
Lameness Advantage	+2.6	Gestation Length	-1 90%
Digital Dermatitis	+0.5	Feed Advantage	+148 46%
Healthy Cow	+198 58%	Enviro Cow	+3.5 70%

CALVING TRAITS

Direct CE	-0.5 +64% Rel	Maternal CE	0.5 +53% Rel
-----------	---------------	-------------	--------------

CONFORMATION (0 UK Daughters in 0 UK Herds)

	-2	-1	0	1	2		
Stature						-0.51	Short
Chest Width						-1.37	Narrow
Body Depth						-1.29	Shallow
Angularity						+0.46	Open Rib
Rump Angle						+0.97	Low Pins
Thurl Width						-0.33	Narrow
R. Legs-S View						+0.13	Sickled
Foot Angle						+0.21	Steep
Locomotion						+1.29	Excellent
F. Udder Att.						+1.04	Tight
R. Udder Ht.						+0.72	Very high
Udder Cleft						+0.35	Strong
Udder Depth						+0.38	Above hock
F. Teat Place						+0.60	Close
R. Teat Place						+0.54	Close
Teat Length						+0.21	Long
Teat Sideview						-1.51	Close

Alta UK abide by the ADHB & Holstein UK established code of Advertising. Bulls tested free for genetic recessives will not show these codes for formatting reasons. Prices are subject to change. Terms and conditions apply.



PLI **+619** Rel 68%

AltaGAINES

65003215425484 | HO6886

PEAK ALTAGAINES-ET
 AltaZAZZLE X POSITIVE X MEDLEY
 HO840M003215425484 | DOB 5/19/2020
 aAa 423 | DMS 123,135 | EFI 11.6 %
 Kappa-Casein: BB Beta-Casein: A2A2
 Haplotype: HH6C | Genetic Codes: TC TD TE TL TP TR TV TY
 AHDB Dairy & Holstein UK 04/2024 - GENOMIC



CONFORMATION

Type Merit	0.39	Mammary	1.01
Legs & Feet	-0.08	Rel	57%

PRODUCTION (0 UK Daughters in 0 UK Herds)

Milk	+464 Kgs	+74% Rel
Protein	+21.8 Kgs	+0.07%
Fat	+29.5 Kgs	+0.12%

HEALTH & MANAGEMENT

Lifespan	119	Ease of Milk	+1.57
Fertility	+9.9	Temperament	+0.9
SCC	-7	Maintenance	-7
MAST	-1	Dairy Carcass	0.2
Calf Survival	+1.9	TB Advantage	4.4 49%
Lameness Advantage	+2.6	Gestation Length	-2 99%
Digital Dermatitis	+0.4	Feed Advantage	+92 46%
Healthy Cow	+207 63%	Enviro Cow	+2.9 70%

CALVING TRAITS

Direct CE	0.2 +80% Rel	Maternal CE	0.9 +53% Rel
-----------	--------------	-------------	--------------

CONFORMATION (0 UK Daughters in 0 UK Herds)

	-2	-1	0	1	2		
Stature						+0.06	Tall
Chest Width						-1.11	Narrow
Body Depth						-1.39	Shallow
Angularity						+0.23	Open Rib
Rump Angle						+1.46	Low Pins
Thurl Width						+0.01	Wide
R. Legs-S View						+0.44	Sickled
Foot Angle						-0.61	Low
Locomotion						+0.29	Excellent
F. Udder Att.						+1.26	Tight
R. Udder Ht.						+0.57	Very high
Udder Cleft						-0.27	Broken
Udder Depth						+1.07	Above hock
F. Teat Place						+0.64	Close
R. Teat Place						+0.14	Close
Teat Length						-0.88	Short
Teat Sideview						-0.86	Close

Alta UK abide by the ADHB & Holstein UK established code of Advertising. Bulls tested free for genetic recessives will not show these codes for formatting reasons. Prices are subject to change. Terms and conditions apply. Proud to use independent data powered by AHDB Dairy.



PLI **+739** Rel 66%

AltaGARRIX

65003247843748 | H07795

PEAK ALTAGARRIX-ET
 AltaKEVLOW X AltaZAZZLE X HUEY
 H0840M003247843748 | DOB 6/7/2022
 aAa 234 | DMS 123,126 | EFI 13.4 %
 Kappa-Casein: AB Beta-Casein: A1A2
 Haplotype: HH6C | Genetic Codes: TC TD TE TL TP TR TV TY
 AHDB Dairy & Holstein UK 04/2024 - GENOMIC



CONFORMATION (0 UK Daughters in 0 UK Herds)

	-2	-1	0	1	2		
Stature						-0.25	Short
Chest Width						-0.16	Narrow
Body Depth						-0.82	Shallow
Angularity						+0.43	Open Rib
Rump Angle						+0.38	Low Pins
Thurl Width						+0.82	Wide
R. Legs-S View						-0.20	Straight
Foot Angle						-0.04	Low
Locomotion						+0.37	Excellent
F. Udder Att.						+0.49	Tight
R. Udder Ht.						+0.19	Very high
Udder Cleft						-0.07	Broken
Udder Depth						-0.05	Below Hock
F. Teat Place						+0.27	Close
R. Teat Place						+0.12	Close
Teat Length						-0.26	Short
Teat Sideview						-0.23	Close

Alta UK abide by the ADHB & Holstein UK established code of Advertising. Bulls tested free for genetic recessives will not show these codes for formatting reasons. Prices are subject to change. Terms and conditions apply.

CONFORMATION

Type Merit	0.23	Mammary	0.22
Legs & Feet	0.02	Rel	53%

PRODUCTION (0 UK Daughters in 0 UK Herds)

Milk	+814 Kgs	+73% Rel
Protein	+35.2 Kgs	+0.09%
Fat	+49.3 Kgs	+0.18%

HEALTH & MANAGEMENT

Lifespan	64	Ease of Milk	+0.07
Fertility	+2.2	Temperament	-0.2
SCC	-7	Maintenance	-4
MAST	-1	Dairy Carcass	0.6
Calf Survival	-0.7	TB Advantage	3.0 43%
Lameness Advantage	+1.7	Gestation Length	-2 55%
Digital Dermatitis	+0.3	Feed Advantage	+127 45%
Healthy Cow	+82 56%	Enviro Cow	+3.8 69%

CALVING TRAITS

Direct CE	0.6 +63% Rel	Maternal CE	1.1 +50% Rel
-----------	--------------	-------------	--------------



PLI **+619** Rel 66%

AltaGETRICH

65003224956642 | H07582

PEAK ALTAGETRICH-ET
 AltaWHEELHOUSE X PURSUIT X SAMURI
 H0840M003224956642 | DOB 6/23/2021
 aAa 423 | DMS 234,345 | EFI 12.3 %
 Kappa-Casein: AB Beta-Casein: A2A2
 Haplotype: HMW1 | Genetic Codes: MW TC TD TL TP TR TV TY
 AHDB Dairy & Holstein UK 04/2024 - GENOMIC



CONFORMATION (0 UK Daughters in 0 UK Herds)

	-2	-1	0	1	2		
Stature						+0.63	Tall
Chest Width						+1.63	Wide
Body Depth						+1.71	Deep
Angularity						+1.60	Open Rib
Rump Angle						+0.79	Low Pins
Thurl Width						+2.96	Wide
R. Legs-S View						+1.32	Sickled
Foot Angle						-0.73	Low
Locomotion						+1.15	Excellent
F. Udder Att.						+0.17	Tight
R. Udder Ht.						+1.11	Very high
Udder Cleft						+1.38	Strong
Udder Depth						-0.05	Below Hock
F. Teat Place						+1.55	Close
R. Teat Place						+2.16	Close
Teat Length						-0.10	Short
Teat Sideview						+2.11	Apart

Alta UK abide by the ADHB & Holstein UK established code of Advertising. Bulls tested free for genetic recessives will not show these codes for formatting reasons. Prices are subject to change. Terms and conditions apply. Proud to use independent data powered by AHDB Dairy.

CONFORMATION

Type Merit	1.61	Mammary	1.42
Legs & Feet	0.75	Rel	55%

PRODUCTION (0 UK Daughters in 0 UK Herds)

Milk	+884 Kgs	+73% Rel
Protein	+28.5 Kgs	-0.01%
Fat	+39.6 Kgs	+0.05%

HEALTH & MANAGEMENT

Lifespan	85	Ease of Milk	+1.00
Fertility	+6.2	Temperament	-0.1
SCC	-12	Maintenance	13
MAST	-1	Dairy Carcass	1.6
Calf Survival	-0.5	TB Advantage	2.6 44%
Lameness Advantage	+1.9	Gestation Length	-1 67%
Digital Dermatitis	+0.5	Feed Advantage	+28 45%
Healthy Cow	+153 57%	Enviro Cow	+2.8 68%

CALVING TRAITS

Direct CE	-0.5 +69% Rel	Maternal CE	0.8 +52% Rel
-----------	---------------	-------------	--------------



PLI **+772** Rel 66%

AltaGOLDENSTORM

65003252197960 | H07930

PEAK ALTAGOLDENSTORM-ET
AltaEXQUISITE X FORTNITE X MILKTIME
H0840M003252197960 | DOB 9/22/2022

aAa 423 | DMS 456,345 | EFI 12.4 %
Kappa-Casein: BE Beta-Casein: A1A1
Genetic Codes: TC TD TE TL TP TR TV TY
AHDB Dairy & Holstein UK 04/2024 - GENOMIC



CONFORMATION (0 UK Daughters in 0 UK Herds)

	-2	-1	0	1	2		
Stature			█			-0.14	Short
Chest Width				█		+0.34	Wide
Body Depth		█				-0.55	Shallow
Angularity			█			+0.12	Open Rib
Rump Angle			█			+0.32	Low Pins
Thurl Width			█			+0.12	Wide
R. Legs-S View						0.00	Straight
Foot Angle			█			+0.40	Steep
Locomotion			█	█		+0.71	Excellent
F. Udder Att.			█			+0.37	Tight
R. Udder Ht.			█			+0.56	Very high
Udder Cleft			█			-0.25	Broken
Udder Depth			█			+0.17	Above hock
F. Teat Place			█	█		+0.69	Close
R. Teat Place			█			-0.27	Apart
Teat Length		█				-1.08	Short
Teat Sideview		█				-0.68	Close

Alta UK abide by the ADHB & Holstein UK established code of Advertising. Bulls tested free for genetic recessives will not show these codes for formatting reasons. Prices are subject to change. Terms and conditions apply.

CONFORMATION

Type Merit	0.77	Mammary	0.55
Legs & Feet	0.87	Rel	53%

PRODUCTION (0 UK Daughters in 0 UK Herds)

Milk	+584 Kgs	+73% Rel
Protein	+30.6 Kgs	+0.13%
Fat	+38.1 Kgs	+0.17%

HEALTH & MANAGEMENT

Lifespan	125	Ease of Milk	+0.75
Fertility	+3.7	Temperament	-0.1
SCC	-23	Maintenance	0
MAST	-2	Dairy Carcass	0.9
Calf Survival	+1.9	TB Advantage	2.3 43%
Lameness Advantage	+1.7	Gestation Length	-2 48%
Digital Dermatitis	+0.3	Feed Advantage	+118 45%
Healthy Cow	+196 56%	Enviro Cow	+3.8 68%

CALVING TRAITS

Direct CE	-0.1 +63% Rel	Maternal CE	0.6 +52% Rel
-----------	---------------	-------------	--------------



PLI **+788** Rel 66%

AltaHAJI

65003250026081 | H07796

PINE-TREE PEAK ALTAHAJI-ET
GREYCUP X PACO X MATTERS
H0840M003250026081 | DOB 4/13/2022

aAa 432 | DMS 123,234 | EFI 11.5 %
Kappa-Casein: BB Beta-Casein: A2A2
Genetic Codes: TC TD TE TL TP TR TV TY
AHDB Dairy & Holstein UK 04/2024 - GENOMIC



CONFORMATION (0 UK Daughters in 0 UK Herds)

	-2	-1	0	1	2		
Stature			█			-0.59	Short
Chest Width		█				-1.59	Narrow
Body Depth		█				-1.49	Shallow
Angularity			█	█		+0.82	Open Rib
Rump Angle			█			-0.53	High Pins
Thurl Width			█			+0.44	Wide
R. Legs-S View			█	█		+1.34	Sickled
Foot Angle			█			+0.04	Steep
Locomotion			█			+0.38	Excellent
F. Udder Att.			█			-0.24	Loose
R. Udder Ht.			█			-0.48	Very Low
Udder Cleft			█			-0.42	Broken
Udder Depth			█			-0.28	Below Hock
F. Teat Place			█			-0.49	Outside
R. Teat Place			█			+0.02	Close
Teat Length			█	█		+1.68	Long
Teat Sideview			█			-0.28	Close

Alta UK abide by the ADHB & Holstein UK established code of Advertising. Bulls tested free for genetic recessives will not show these codes for formatting reasons. Prices are subject to change. Terms and conditions apply. Proud to use independent data powered by AHDB Dairy.

CONFORMATION

Type Merit	0.01	Mammary	-0.21
Legs & Feet	0.33	Rel	53%

PRODUCTION (0 UK Daughters in 0 UK Herds)

Milk	+759 Kgs	+72% Rel
Protein	+31.1 Kgs	+0.07%
Fat	+45.5 Kgs	+0.17%

HEALTH & MANAGEMENT

Lifespan	104	Ease of Milk	-0.30
Fertility	+4.7	Temperament	0.0
SCC	-21	Maintenance	-17
MAST	-2	Dairy Carcass	1.0
Calf Survival	+1.3	TB Advantage	0.4 45%
Lameness Advantage	+2.1	Gestation Length	-1 55%
Digital Dermatitis	+0.4	Feed Advantage	+214 45%
Healthy Cow	+166 57%	Enviro Cow	+4.1 68%

CALVING TRAITS

Direct CE	-0.7 +63% Rel	Maternal CE	0.7 +50% Rel
-----------	---------------	-------------	--------------



PLI **+800** Rel 66%

AltaKALON

65003247843213 | HO7704

PEAK ALTAKALON-ET
AltaKEVLOW X AltaZAZZLE X AltaEXPLOSION
HO840M003247843213 | DOB 2/11/2022

aAa 432 | DMS 234,123 | EFI 12.6 %
Kappa-Casein: BB Beta-Casein: A1A2
Genetic Codes: TC TD TE TL TP TR TV TY
AHDB Dairy & Holstein UK 04/2024 - GENOMIC



CONFORMATION (0 UK Daughters in 0 UK Herds)

	-2	-1	0	1	2		
Stature						-1.03	Short
Chest Width						-2.34	Narrow
Body Depth						-2.72	Shallow
Angularity						-0.04	Coarse
Rump Angle						-0.03	High Pins
Thurl Width						-1.12	Narrow
R. Legs-S View						+0.27	Sickled
Foot Angle						-0.71	Low
Locomotion						-0.26	Poor
F. Udder Att.						+1.09	Tight
R. Udder Ht.						+0.09	Very high
Udder Cleft						-0.75	Broken
Udder Depth						+1.29	Above hock
F. Teat Place						-0.62	Outside
R. Teat Place						-1.14	Apart
Teat Length						-0.23	Short
Teat Sideview						-0.86	Close

Alta UK abide by the ADHB & Holstein UK established code of Advertising. Bulls tested free for genetic recessives will not show these codes for formatting reasons. Prices are subject to change. Terms and conditions apply.

CONFORMATION

Type Merit	-0.31	Mammary	0.51
Legs & Feet	-0.45	Rel	53%

PRODUCTION (0 UK Daughters in 0 UK Herds)

Milk	+529 Kgs	+73% Rel
Protein	+29.0 Kgs	+0.13%
Fat	+37.7 Kgs	+0.19%

HEALTH & MANAGEMENT

Lifespan	134	Ease of Milk	-0.04
Fertility	+10.5	Temperament	0.0
SCC	-20	Maintenance	-25
MAST	-2	Dairy Carcass	-0.1
Calf Survival	+0.9	TB Advantage	4.0 43%
Lameness Advantage	+1.8	Gestation Length	-4 55%
Digital Dermatitis	+0.2	Feed Advantage	+182 45%
Healthy Cow	+226 56%	Enviro Cow	+4.0 69%

CALVING TRAITS

Direct CE	0.8 +63% Rel	Maternal CE	0.7 +50% Rel
-----------	--------------	-------------	--------------



PLI **+696** Rel 67%

AltaKEVLOW

65003212150639 | HO7217

PEAK ALTAKEVLOW-ET
AltaPLINKO X MARIUS X DUKE
HO840M003212150639 | DOB 6/25/2020

aAa 234 | DMS 123,135 | EFI 13.0 %
Kappa-Casein: BE Beta-Casein: A1A1
Genetic Codes: TC TD TE TL TP TR TV TY
AHDB Dairy & Holstein UK 04/2024 - GENOMIC



CONFORMATION (0 UK Daughters in 0 UK Herds)

	-2	-1	0	1	2		
Stature						-0.03	Short
Chest Width						-0.87	Narrow
Body Depth						-1.33	Shallow
Angularity						+0.49	Open Rib
Rump Angle						-0.15	High Pins
Thurl Width						+0.35	Wide
R. Legs-S View						+0.20	Sickled
Foot Angle						+0.08	Steep
Locomotion						-0.65	Poor
F. Udder Att.						+0.13	Tight
R. Udder Ht.						+0.23	Very high
Udder Cleft						-0.58	Broken
Udder Depth						+0.14	Above hock
F. Teat Place						-0.53	Outside
R. Teat Place						-0.45	Apart
Teat Length						-0.28	Short
Teat Sideview						+0.18	Apart

Alta UK abide by the ADHB & Holstein UK established code of Advertising. Bulls tested free for genetic recessives will not show these codes for formatting reasons. Prices are subject to change. Terms and conditions apply. Proud to use independent data powered by AHDB Dairy.

CONFORMATION

Type Merit	-0.43	Mammary	-0.11
Legs & Feet	-0.87	Rel	57%

PRODUCTION (0 UK Daughters in 0 UK Herds)

Milk	+760 Kgs	+74% Rel
Protein	+32.3 Kgs	+0.08%
Fat	+48.5 Kgs	+0.20%

HEALTH & MANAGEMENT

Lifespan	43	Ease of Milk	-0.50
Fertility	+2.6	Temperament	+0.5
SCC	-16	Maintenance	-7
MAST	-2	Dairy Carcass	0.4
Calf Survival	-1.4	TB Advantage	4.1 49%
Lameness Advantage	+1.2	Gestation Length	-4 99%
Digital Dermatitis	+0.1	Feed Advantage	+137 45%
Healthy Cow	+70 58%	Enviro Cow	+3.5 70%

CALVING TRAITS

Direct CE	0.5 +72% Rel	Maternal CE	0.7 +54% Rel
-----------	--------------	-------------	--------------



PLI +618 Rel 67%

AltaLIENONME

65003215425732 | HO7096

PEAK ALTALIENONME-ET
 AltaTIKI X POSITIVE X JEDI
 HO840M003215425732 | DOB 8/13/2020
 aAa 234 | DMS 234,345 | EFI 13.0 %
 Kappa-Casein: AB Beta-Casein: A1A2
 Genetic Codes: TC TD TE TL TP TR TV TY
 AHDB Dairy & Holstein UK 04/2024 - GENOMIC



CONFORMATION (0 UK Daughters in 0 UK Herds)

	-2	-1	0	1	2		
Stature						-0.27	Short
Chest Width						+0.47	Wide
Body Depth						-0.46	Shallow
Angularity						+0.63	Open Rib
Rump Angle						+0.09	Low Pins
Thurl Width						+0.31	Wide
R. Legs-S View						+0.54	Sickled
Foot Angle						-0.71	Low
Locomotion						+0.20	Excellent
F. Udder Att.						+1.14	Tight
R. Udder Ht.						+1.36	Very high
Udder Cleft						-0.22	Broken
Udder Depth						+0.77	Above hock
F. Teat Place						-0.20	Outside
R. Teat Place						+0.23	Close
Teat Length						-0.01	Short
Teat Sideview						+0.26	Apart

Alta UK abide by the ADHB & Holstein UK established code of Advertising. Bulls tested free for genetic recessives will not show these codes for formatting reasons. Prices are subject to change. Terms and conditions apply.

CONFORMATION

Type Merit	0.97	Mammary	1.45
Legs & Feet	-0.24	Rel	55%

PRODUCTION (0 UK Daughters in 0 UK Herds)

Milk	+825 Kgs	+74% Rel
Protein	+31.5 Kgs	+0.05%
Fat	+38.8 Kgs	+0.06%

HEALTH & MANAGEMENT

Lifespan	85	Ease of Milk	+1.94
Fertility	+0.8	Temperament	+0.6
SCC	-6	Maintenance	-1
MAST	0	Dairy Carcass	0.5
Calf Survival	+0.3	TB Advantage	4.0 50%
Lameness Advantage	+1.3	Gestation Length	-3 99%
Digital Dermatitis	+0.1	Feed Advantage	+67 45%
Healthy Cow	+89 59%	Enviro Cow	+3.1 70%

CALVING TRAITS

Direct CE	0.5 +75% Rel	Maternal CE	1.5 +51% Rel
-----------	--------------	-------------	--------------



PLI +745 Rel 68%

AltaLINGUIST

65003215425475 | HO7292

PEAK ALTALINGUIST-ET
 AltaZAZZLE X POSITIVE X JEDI
 HO840M003215425475 | DOB 5/12/2020
 aAa 243 | DMS 135,561 | EFI 12.2 %
 Kappa-Casein: BB Beta-Casein: A1A2
 Haplotype: HH6C | Genetic Codes: TC TD TE TL TP TR TV TY
 AHDB Dairy & Holstein UK 04/2024 - GENOMIC



CONFORMATION (0 UK Daughters in 0 UK Herds)

	-2	-1	0	1	2		
Stature						-1.23	Short
Chest Width						-2.27	Narrow
Body Depth						-2.39	Shallow
Angularity						+0.13	Open Rib
Rump Angle						+1.47	Low Pins
Thurl Width						-1.14	Narrow
R. Legs-S View						-0.41	Straight
Foot Angle						-0.20	Low
Locomotion						+0.41	Excellent
F. Udder Att.						+0.52	Tight
R. Udder Ht.						-0.29	Very Low
Udder Cleft						-0.20	Broken
Udder Depth						+0.39	Above hock
F. Teat Place						+0.83	Close
R. Teat Place						-0.19	Apart
Teat Length						-1.43	Short
Teat Sideview						-1.69	Close

Alta UK abide by the ADHB & Holstein UK established code of Advertising. Bulls tested free for genetic recessives will not show these codes for formatting reasons. Prices are subject to change. Terms and conditions apply. Proud to use independent data powered by AHDB Dairy.

CONFORMATION

Type Merit	-0.10	Mammary	0.33
Legs & Feet	0.11	Rel	58%

PRODUCTION (0 UK Daughters in 0 UK Herds)

Milk	+562 Kgs	+74% Rel
Protein	+27.2 Kgs	+0.10%
Fat	+41.8 Kgs	+0.22%

HEALTH & MANAGEMENT

Lifespan	98	Ease of Milk	+1.39
Fertility	+7.1	Temperament	+0.6
SCC	-6	Maintenance	-26
MAST	0	Dairy Carcass	0.3
Calf Survival	+2.1	TB Advantage	4.0 49%
Lameness Advantage	+2.3	Gestation Length	0 99%
Digital Dermatitis	+0.5	Feed Advantage	+215 46%
Healthy Cow	+159 58%	Enviro Cow	+3.9 70%

CALVING TRAITS

Direct CE	0.2 +68% Rel	Maternal CE	0.8 +54% Rel
-----------	--------------	-------------	--------------



PLI **+756** Rel 66%

AltaMACARIO

65003213324023 | H07823

PLAIN-KNOLL ALTAMACARIO-ET
AltaZEMINI X ACURA X RESOLVE
H0840M003213324023 | DOB 8/20/2022

aAa 324 | DMS 456,561 | EFI 12.1 %
Kappa-Casein: AB Beta-Casein: A2A2
Genetic Codes: TC TD TE TL TP TR TV TY
AHDB Dairy & Holstein UK 04/2024 - GENOMIC



CONFORMATION (0 UK Daughters in 0 UK Herds)

	-2	-1	0	1	2		
Stature						+0.41	Tall
Chest Width						+0.68	Wide
Body Depth						+0.07	Deep
Angularity						+0.91	Open Rib
Rump Angle						-0.47	High Pins
Thurl Width						+1.48	Wide
R. Legs-S View						-0.35	Straight
Foot Angle						+0.57	Steep
Locomotion						+0.31	Excellent
F. Udder Att.						+0.82	Tight
R. Udder Ht.						+0.08	Very high
Udder Cleft						-0.51	Broken
Udder Depth						+0.29	Above hock
F. Teat Place						+0.24	Close
R. Teat Place						-0.58	Apart
Teat Length						-0.39	Short
Teat Sideview						-0.19	Close

Alta UK abide by the AHDB & Holstein UK established code of Advertising. Bulls tested free for genetic recessives will not show these codes for formatting reasons. Prices are subject to change. Terms and conditions apply.

CONFORMATION

Type Merit	0.69	Mammary	0.61
Legs & Feet	0.31	Rel	53%

PRODUCTION (0 UK Daughters in 0 UK Herds)

Milk	+902 Kgs	+73% Rel
Protein	+37.3 Kgs	+0.08%
Fat	+41.6 Kgs	+0.06%

HEALTH & MANAGEMENT

Lifespan	92	Ease of Milk	+0.98
Fertility	+2.3	Temperament	+0.6
SCC	-11	Maintenance	6
MAST	-1	Dairy Carcass	1.5
Calf Survival	+1.5	TB Advantage	1.6 43%
Lameness Advantage	+1.0	Gestation Length	-2 49%
Digital Dermatitis	+0.2	Feed Advantage	+131 45%
Healthy Cow	+123 56%	Enviro Cow	+3.9 69%

CALVING TRAITS

Direct CE	-0.1 +63% Rel	Maternal CE	0.5 +53% Rel
-----------	---------------	-------------	--------------



PLI **+732** Rel 66%

AltaMAINSTREAM

65003236692372 | H07403

PEAK ALTAMAINSTREAM-ET
AltaWHEELHOUSE X RIVETING X AltaTOPSHOT
H0840M003236692372 | DOB 5/27/2021

aAa 432 | DMS 234,123 | EFI 12.3 %
Kappa-Casein: AB Beta-Casein: A2A2
Genetic Codes: TC TD TE TL TP TR TV TY
AHDB Dairy & Holstein UK 04/2024 - GENOMIC



CONFORMATION (0 UK Daughters in 0 UK Herds)

	-2	-1	0	1	2		
Stature						-0.06	Short
Chest Width						+0.38	Wide
Body Depth						0.00	Shallow
Angularity						+0.97	Open Rib
Rump Angle						+0.83	Low Pins
Thurl Width						+0.70	Wide
R. Legs-S View						+1.50	Sickled
Foot Angle						-1.28	Low
Locomotion						+1.15	Excellent
F. Udder Att.						-0.74	Loose
R. Udder Ht.						+0.77	Very high
Udder Cleft						+0.74	Strong
Udder Depth						-0.71	Below Hock
F. Teat Place						+1.12	Close
R. Teat Place						+1.80	Close
Teat Length						-1.06	Short
Teat Sideview						+1.96	Apart

Alta UK abide by the AHDB & Holstein UK established code of Advertising. Bulls tested free for genetic recessives will not show these codes for formatting reasons. Prices are subject to change. Terms and conditions apply. Proud to use independent data powered by AHDB Dairy.

CONFORMATION

Type Merit	0.91	Mammary	0.51
Legs & Feet	0.62	Rel	55%

PRODUCTION (0 UK Daughters in 0 UK Herds)

Milk	+833 Kgs	+73% Rel
Protein	+32.1 Kgs	+0.05%
Fat	+45.8 Kgs	+0.14%

HEALTH & MANAGEMENT

Lifespan	92	Ease of Milk	+0.23
Fertility	+2.4	Temperament	-0.3
SCC	-12	Maintenance	0
MAST	-1	Dairy Carcass	1.5
Calf Survival	+1.1	TB Advantage	1.7 43%
Lameness Advantage	+2.9	Gestation Length	+1 98%
Digital Dermatitis	+0.7	Feed Advantage	+127 45%
Healthy Cow	+136 57%	Enviro Cow	+3.7 68%

CALVING TRAITS

Direct CE	-0.5 +70% Rel	Maternal CE	0.7 +51% Rel
-----------	---------------	-------------	--------------



PLI **+695** Rel 66%

AltaMAMADI

65003224928456 | H07515

PEAK ALTAMAMADI-ET
 AltaMAGNIFIQUE X AltaZAZZLE X AltaEXPLOSION
 H0840M003224928456 | DOB 8/17/2021
 aAa 243 | DMS 561,126 | EFI 11.8 %
 Kappa-Casein: AB Beta-Casein: A1A2
 Genetic Codes: TC TD TE TL TP TR TV TY
 AHDB Dairy & Holstein UK 04/2024 - GENOMIC



CONFORMATION (0 UK Daughters in 0 UK Herds)

	-2	-1	0	1	2		
Stature						-0.65	Short
Chest Width						-0.07	Narrow
Body Depth						-1.55	Shallow
Angularity						-1.31	Coarse
Rump Angle						-0.32	High Pins
Thurl Width						-0.03	Narrow
R. Legs-S View						+0.37	Sickled
Foot Angle						-0.05	Low
Locomotion						-0.11	Poor
F. Udder Att.						+1.94	Tight
R. Udder Ht.						-0.32	Very Low
Udder Cleft						-0.06	Broken
Udder Depth						+1.42	Above hock
F. Teat Place						+1.00	Close
R. Teat Place						+1.20	Close
Teat Length						-0.88	Short
Teat Sideview						-1.15	Close

Alta UK abide by the ADHB & Holstein UK established code of Advertising. Bulls tested free for genetic recessives will not show these codes for formatting reasons. Prices are subject to change. Terms and conditions apply.

CONFORMATION

Type Merit	0.04	Mammary	1.15
Legs & Feet	-0.44	Rel	53%

PRODUCTION (0 UK Daughters in 0 UK Herds)

Milk	+168 Kgs	+73% Rel
Protein	+20.9 Kgs	+0.18%
Fat	+31.3 Kgs	+0.29%

HEALTH & MANAGEMENT

Lifespan	125	Ease of Milk	-0.24
Fertility	+12.8	Temperament	-0.2
SCC	-21	Maintenance	-5
MAST	-2	Dairy Carcass	0.6
Calf Survival	+0.3	TB Advantage	1.1 42%
Lameness Advantage	+0.7	Gestation Length	-2 55%
Digital Dermatitis		Feed Advantage	+88 45%
Healthy Cow	+232 57%	Enviro Cow	+3.2 69%

CALVING TRAITS

Direct CE	0.2 +71% Rel	Maternal CE	0.8 +50% Rel
-----------	--------------	-------------	--------------



PLI **+713** Rel 66%

AltaMANOWAR

65003235933059 | H07931

PEAK ALTAMANOWAR-ET
 AltaMAGNIFIQUE X AltaPLINKO X AltaROBERT
 H0840M003235933059 | DOB 9/9/2021
 aAa 315 | DMS 246,126 | EFI 12.8 %
 Kappa-Casein: AB Beta-Casein: A1A1
 Haplotype: HMW1 | Genetic Codes: MW TC TD TL TP TR TV TY
 AHDB Dairy & Holstein UK 04/2024 - GENOMIC



CONFORMATION (0 UK Daughters in 0 UK Herds)

	-2	-1	0	1	2		
Stature						-0.20	Short
Chest Width						+0.56	Wide
Body Depth						+0.09	Deep
Angularity						+0.52	Open Rib
Rump Angle						+1.22	Low Pins
Thurl Width						+0.88	Wide
R. Legs-S View						+0.81	Sickled
Foot Angle						-0.75	Low
Locomotion						+0.33	Excellent
F. Udder Att.						-0.94	Loose
R. Udder Ht.						+0.06	Very high
Udder Cleft						-1.33	Broken
Udder Depth						-1.30	Below Hock
F. Teat Place						-0.39	Outside
R. Teat Place						-0.46	Apart
Teat Length						-0.09	Short
Teat Sideview						-0.13	Close

Alta UK abide by the ADHB & Holstein UK established code of Advertising. Bulls tested free for genetic recessives will not show these codes for formatting reasons. Prices are subject to change. Terms and conditions apply. Proud to use independent data powered by AHDB Dairy.

CONFORMATION

Type Merit	-0.23	Mammary	-0.84
Legs & Feet	-0.03	Rel	53%

PRODUCTION (0 UK Daughters in 0 UK Herds)

Milk	+762 Kgs	+73% Rel
Protein	+32.7 Kgs	+0.08%
Fat	+39.8 Kgs	+0.10%

HEALTH & MANAGEMENT

Lifespan	85	Ease of Milk	-0.43
Fertility	+7.2	Temperament	+0.4
SCC	-12	Maintenance	1
MAST	-1	Dairy Carcass	0.9
Calf Survival	+0.8	TB Advantage	2.5 42%
Lameness Advantage	+0.9	Gestation Length	-3 55%
Digital Dermatitis	+0.1	Feed Advantage	+106 45%
Healthy Cow	+136 57%	Enviro Cow	+3.5 69%

CALVING TRAITS

Direct CE	0.7 +64% Rel	Maternal CE	0.7 +49% Rel
-----------	--------------	-------------	--------------



PLI **+745** Rel 66%

AltaMASQUERADE

65003247843505 | H07760

PEAK ALTAMASQUERADE-ET

AltaKEVLOW X PURSUIT X MEDLEY

H0840M003247843505 | DOB 4/8/2022

aAa 354 | DMS 234,246 | EFI 12.8 %

Kappa-Casein: AE Beta-Casein: A1A2

Genetic Codes: TC TD TE TL TP TR TV TY

AHDB Dairy & Holstein UK 04/2024 - GENOMIC



CONFORMATION (0 UK Daughters in 0 UK Herds)

	-2	-1	0	1	2		
Stature						-0.29	Short
Chest Width						-0.52	Narrow
Body Depth						-1.46	Shallow
Angularity						+0.12	Open Rib
Rump Angle						+1.21	Low Pins
Thurl Width						-0.16	Narrow
R. Legs-S View						+0.41	Sickled
Foot Angle						-0.44	Low
Locomotion						+0.83	Excellent
F. Udder Att.						-0.28	Loose
R. Udder Ht.						+0.42	Very high
Udder Cleft						-0.31	Broken
Udder Depth						+0.16	Above hock
F. Teat Place						-0.15	Outside
R. Teat Place						-0.31	Apart
Teat Length						0.00	Short
Teat Sideview						+0.82	Apart

Alta UK abide by the ADHB & Holstein UK established code of Advertising. Bulls tested free for genetic recessives will not show these codes for formatting reasons. Prices are subject to change. Terms and conditions apply.

CONFORMATION

Type Merit	0.42	Mammary	0.31
Legs & Feet	0.69	Rel	54%

PRODUCTION (0 UK Daughters in 0 UK Herds)

Milk	+609 Kgs	+73% Rel
Protein	+27.4 Kgs	+0.08%
Fat	+43.4 Kgs	+0.21%

HEALTH & MANAGEMENT

Lifespan	119	Ease of Milk	+0.54
Fertility	+8.1	Temperament	+0.6
SCC	-20	Maintenance	-7
MAST	-1	Dairy Carcass	1.0
Calf Survival	-0.1	TB Advantage	2.7 44%
Lameness Advantage	+1.4	Gestation Length	-3 55%
Digital Dermatitis	+0.4	Feed Advantage	+125 45%
Healthy Cow	+188 57%	Enviro Cow	+3.7 69%

CALVING TRAITS

Direct CE	0.2 +63% Rel	Maternal CE	0.9 +50% Rel
-----------	--------------	-------------	--------------



PLI **+662** Rel 66%

AltaMESMERIZE

65003238827335 | H07584

PEAK ALTAMESMERIZE-ET

AltaWHEELHOUSE X POSITIVE X MEDLEY

H0840M003238827335 | DOB 6/20/2021

aAa 351 | DMS 135,345 | EFI 11.9 %

Kappa-Casein: BB Beta-Casein: A2A2

Haplotype: HMW1 | Genetic Codes: MW TC TD TL TP TR TV TY

AHDB Dairy & Holstein UK 04/2024 - GENOMIC



CONFORMATION (0 UK Daughters in 0 UK Herds)

	-2	-1	0	1	2		
Stature						+0.33	Tall
Chest Width						+0.90	Wide
Body Depth						+0.24	Deep
Angularity						+0.72	Open Rib
Rump Angle						+1.25	Low Pins
Thurl Width						+1.73	Wide
R. Legs-S View						+0.72	Sickled
Foot Angle						-1.19	Low
Locomotion						+0.18	Excellent
F. Udder Att.						+0.18	Tight
R. Udder Ht.						+0.78	Very high
Udder Cleft						-0.41	Broken
Udder Depth						+0.32	Above hock
F. Teat Place						+0.60	Close
R. Teat Place						+0.49	Close
Teat Length						-1.47	Short
Teat Sideview						+0.99	Apart

Alta UK abide by the ADHB & Holstein UK established code of Advertising. Bulls tested free for genetic recessives will not show these codes for formatting reasons. Prices are subject to change. Terms and conditions apply. Proud to use independent data powered by AHDB Dairy.

CONFORMATION

Type Merit	0.60	Mammary	0.72
Legs & Feet	-0.07	Rel	55%

PRODUCTION (0 UK Daughters in 0 UK Herds)

Milk	+657 Kgs	+73% Rel
Protein	+29.1 Kgs	+0.08%
Fat	+37.1 Kgs	+0.12%

HEALTH & MANAGEMENT

Lifespan	101	Ease of Milk	+0.34
Fertility	+8.2	Temperament	+0.1
SCC	-8	Maintenance	7
MAST	-1	Dairy Carcass	0.7
Calf Survival	0.0	TB Advantage	3.4 44%
Lameness Advantage	+1.4	Gestation Length	-1 55%
Digital Dermatitis	+0.3	Feed Advantage	+38 45%
Healthy Cow	+160 57%	Enviro Cow	+3.1 68%

CALVING TRAITS

Direct CE	0.8 +76% Rel	Maternal CE	1.1 +51% Rel
-----------	--------------	-------------	--------------



PLI **+863** Rel 66%

AltaMORPHEUS

65003235933250 | H07706

PEAK ALTAMORPHEUS-ET
 CURFEW X CRIMSON X FRAZZLED
 HO840M003235933250 | DOB 10/25/2021
 aAa 426 | DMS 345,135 | EFI 12.2 %
 Kappa-Casein: AB Beta-Casein: A2A2
 Haplotype: HCDC | Genetic Codes: CD TD TE TL TP TR TV TY
 AHDB Dairy & Holstein UK 04/2024 - GENOMIC



CONFORMATION (0 UK Daughters in 0 UK Herds)

	-2	-1	0	1	2		
Stature						-1.59	Short
Chest Width						+0.03	Wide
Body Depth						-1.33	Shallow
Angularity						-1.03	Coarse
Rump Angle						-2.17	High Pins
Thurl Width						-2.16	Narrow
R. Legs-S View						-0.18	Straight
Foot Angle						-0.57	Low
Locomotion						+0.24	Excellent
F. Udder Att.						-0.51	Loose
R. Udder Ht.						-0.31	Very Low
Udder Cleft						-0.25	Broken
Udder Depth						-0.66	Below Hock
F. Teat Place						-0.46	Outside
R. Teat Place						-0.12	Apart
Teat Length						-0.86	Short
Teat Sideview						+1.02	Apart

Alta UK abide by the ADHB & Holstein UK established code of Advertising. Bulls tested free for genetic recessives will not show these codes for formatting reasons. Prices are subject to change. Terms and conditions apply.

CONFORMATION

Type Merit	-0.36	Mammary	-0.08
Legs & Feet	-0.02	Rel	54%

PRODUCTION (0 UK Daughters in 0 UK Herds)

Milk	+688 Kgs	+73% Rel
Protein	+28.5 Kgs	+0.07%
Fat	+46.6 Kgs	+0.21%

HEALTH & MANAGEMENT

Lifespan	159	Ease of Milk	+0.22
Fertility	+10.1	Temperament	-0.3
SCC	-20	Maintenance	-13
MAST	-2	Dairy Carcass	1.2
Calf Survival	+2.6	TB Advantage	2.2 45%
Lameness Advantage	+1.8	Gestation Length	-1 49%
Digital Dermatitis	+0.4	Feed Advantage	+167 45%
Healthy Cow	+255 56%	Enviro Cow	+4.2 69%

CALVING TRAITS

Direct CE	1.2 +63% Rel	Maternal CE	1.0 +53% Rel
-----------	--------------	-------------	--------------



PLI **+764** Rel 66%

AltaOBADA

65003247843587 | H07824

PEAK ALTAOBADA-ET
 AltaZEMINI X NO EXCUSE X MARIUS
 HO840M003247843587 | DOB 4/28/2022
 aAa 423 | DMS 345,135 | EFI 12.6 %
 Kappa-Casein: BB Beta-Casein: A1A1
 Haplotype: HH6C | Genetic Codes: TC TD TE TL TP TR TV TY
 AHDB Dairy & Holstein UK 04/2024 - GENOMIC



CONFORMATION (0 UK Daughters in 0 UK Herds)

	-2	-1	0	1	2		
Stature						-0.33	Short
Chest Width						+0.24	Wide
Body Depth						-0.79	Shallow
Angularity						+0.39	Open Rib
Rump Angle						+0.44	Low Pins
Thurl Width						+0.12	Wide
R. Legs-S View						+0.43	Sickled
Foot Angle						-0.41	Low
Locomotion						+0.34	Excellent
F. Udder Att.						+0.66	Tight
R. Udder Ht.						+0.63	Very high
Udder Cleft						-1.04	Broken
Udder Depth						+0.22	Above hock
F. Teat Place						+0.14	Close
R. Teat Place						-0.78	Apart
Teat Length						-0.64	Short
Teat Sideview						-0.47	Close

Alta UK abide by the ADHB & Holstein UK established code of Advertising. Bulls tested free for genetic recessives will not show these codes for formatting reasons. Prices are subject to change. Terms and conditions apply. Proud to use independent data powered by AHDB Dairy.

CONFORMATION

Type Merit	0.56	Mammary	0.46
Legs & Feet	0.33	Rel	53%

PRODUCTION (0 UK Daughters in 0 UK Herds)

Milk	+812 Kgs	+73% Rel
Protein	+31.7 Kgs	+0.05%
Fat	+48.0 Kgs	+0.17%

HEALTH & MANAGEMENT

Lifespan	92	Ease of Milk	+0.31
Fertility	+4.8	Temperament	+0.4
SCC	-17	Maintenance	-3
MAST	-2	Dairy Carcass	0.2
Calf Survival	+1.3	TB Advantage	1.5 43%
Lameness Advantage	+1.7	Gestation Length	-3 48%
Digital Dermatitis	+0.2	Feed Advantage	+111 45%
Healthy Cow	+166 56%	Enviro Cow	+3.6 68%

CALVING TRAITS

Direct CE	0.4 +63% Rel	Maternal CE	0.2 +52% Rel
-----------	--------------	-------------	--------------



PLI +779 Rel 66%

AltaOHTANI

65003247843524 | H07825

PEAK ALTAOHTANI-ET
GREYCUP X AltaPLINKO X AltaROBERT
H0840M003247843524 | DOB 4/12/2022

aAa 246 | DMS 126,246 | EFI 12.5 %
Kappa-Casein: AB Beta-Casein: A2A2
Genetic Codes: TC TD TE TL TP TR TV TY
AHDB Dairy & Holstein UK 04/2024 - GENOMIC



CONFORMATION (0 UK Daughters in 0 UK Herds)

	-2	-1	0	1	2		
Stature						-1.31	Short
Chest Width						-1.59	Narrow
Body Depth						-2.37	Shallow
Angularity						-0.39	Coarse
Rump Angle						+0.32	Low Pins
Thurl Width						-1.12	Narrow
R. Legs-S View						-0.19	Straight
Foot Angle						+0.31	Steep
Locomotion						+0.42	Excellent
F. Udder Att.						+0.18	Tight
R. Udder Ht.						-0.44	Very Low
Udder Cleft						-0.86	Broken
Udder Depth						+0.31	Above hock
F. Teat Place						-0.48	Outside
R. Teat Place						-0.62	Apart
Teat Length						-0.45	Short
Teat Sideview						-0.70	Close

Alta UK abide by the ADHB & Holstein UK established code of Advertising. Bulls tested free for genetic recessives will not show these codes for formatting reasons. Prices are subject to change. Terms and conditions apply.

CONFORMATION

Type Merit	-0.40	Mammary	-0.22
Legs & Feet	0.23	Rel	53%

PRODUCTION (0 UK Daughters in 0 UK Herds)

Milk	+669 Kgs	+72% Rel
Protein	+31.4 Kgs	+0.10%
Fat	+37.5 Kgs	+0.12%

HEALTH & MANAGEMENT

Lifespan	149	Ease of Milk	+0.05
Fertility	+6.5	Temperament	-0.4
SCC	-20	Maintenance	-22
MAST	-2	Dairy Carcass	1.5
Calf Survival	+0.4	TB Advantage	3.9 45%
Lameness Advantage	+1.5	Gestation Length	-2 55%
Digital Dermatitis	+0.3	Feed Advantage	+181 45%
Healthy Cow	+188 56%	Enviro Cow	+4.1 68%

CALVING TRAITS

Direct CE	-0.1 +63% Rel	Maternal CE	0.7 +50% Rel
-----------	---------------	-------------	--------------



PLI +840 Rel 66%

AltaORVAR

65003242794220 | H07797

PEAK ALTAORVAR-ET
AltaZEOLITE X AltaPLINKO X AltaROBERT
H0840M003242794220 | DOB 5/23/2022

aAa 432 | DMS 456,561 | EFI 11.8 %
Kappa-Casein: BB Beta-Casein: A2A2
Haplotype: HH6C HMW1 | Genetic Codes: MW TC TD TL TP TR TV TY
AHDB Dairy & Holstein UK 04/2024 - GENOMIC



CONFORMATION (0 UK Daughters in 0 UK Herds)

	-2	-1	0	1	2		
Stature						-1.50	Short
Chest Width						-0.60	Narrow
Body Depth						-1.89	Shallow
Angularity						-0.41	Coarse
Rump Angle						+0.66	Low Pins
Thurl Width						-0.57	Narrow
R. Legs-S View						-0.25	Straight
Foot Angle						+0.10	Steep
Locomotion						+0.73	Excellent
F. Udder Att.						+0.13	Tight
R. Udder Ht.						-0.49	Very Low
Udder Cleft						-1.05	Broken
Udder Depth						-0.12	Below Hock
F. Teat Place						-0.85	Outside
R. Teat Place						-0.87	Apart
Teat Length						-1.16	Short
Teat Sideview						-0.37	Close

Alta UK abide by the ADHB & Holstein UK established code of Advertising. Bulls tested free for genetic recessives will not show these codes for formatting reasons. Prices are subject to change. Terms and conditions apply. Proud to use independent data powered by AHDB Dairy.

CONFORMATION

Type Merit	-0.14	Mammary	-0.26
Legs & Feet	0.53	Rel	53%

PRODUCTION (0 UK Daughters in 0 UK Herds)

Milk	+725 Kgs	+73% Rel
Protein	+33.7 Kgs	+0.11%
Fat	+42.7 Kgs	+0.15%

HEALTH & MANAGEMENT

Lifespan	113	Ease of Milk	+0.13
Fertility	+12.0	Temperament	-0.2
SCC	-15	Maintenance	-17
MAST	0	Dairy Carcass	1.1
Calf Survival	-0.7	TB Advantage	1.6 44%
Lameness Advantage	+1.3	Gestation Length	-3 55%
Digital Dermatitis	+0.5	Feed Advantage	+190 45%
Healthy Cow	+187 56%	Enviro Cow	+4.2 69%

CALVING TRAITS

Direct CE	1.0 +63% Rel	Maternal CE	0.8 +50% Rel
-----------	--------------	-------------	--------------



PLI **+735** Rel 68%

AltaOVERTAKE

65003214324409 | H07218

LADYS-MANOR ALTAOVERTAKE-ET
 AltaZAZZLE X GRANITE X MILLINGTON
 HO840M003214324409 | DOB 11/3/2020
 aAa 342 | DMS 246,126 | EFI 12.6 %
 Kappa-Casein: BB Beta-Casein: A1A2
 Genetic Codes: MW TC TD TL TP TR TV TY
 AHDB Dairy & Holstein UK 04/2024 - GENOMIC



CONFORMATION			
Type Merit	0.52	Mammary	1.01
Legs & Feet	0.44	Rel	58%

PRODUCTION (0 UK Daughters in 0 UK Herds)			
Milk	+492 Kgs	+74% Rel	
Protein	+24.4 Kgs	+0.09%	
Fat	+37.1 Kgs	+0.20%	

HEALTH & MANAGEMENT			
Lifespan	134	Ease of Milk	+0.19
Fertility	+9.1	Temperament	-0.4
SCC	-18	Maintenance	-11
MAST	-2	Dairy Carcass	-0.2
Calf Survival	+1.1	TB Advantage	4.1 50%
Lameness Advantage	+3.1	Gestation Length	-1 68%
Digital Dermatitis	+0.8	Feed Advantage	+120 46%
Healthy Cow	+235 58%	Enviro Cow	+3.5 70%

CALVING TRAITS			
Direct CE	-0.2	+71% Rel	Maternal CE 0.9 +54% Rel

CONFORMATION (0 UK Daughters in 0 UK Herds)						
	-2	-1	0	1	2	
Stature						-0.63 Short
Chest Width						-0.81 Narrow
Body Depth						-1.69 Shallow
Angularity						-0.34 Coarse
Rump Angle						+0.46 Low Pins
Thurl Width						+0.65 Wide
R. Legs-S View						-0.64 Straight
Foot Angle						+0.09 Steep
Locomotion						+0.46 Excellent
F. Udder Att.						+1.29 Tight
R. Udder Ht.						+0.58 Very high
Udder Cleft						+0.21 Strong
Udder Depth						+0.95 Above hock
F. Teat Place						+0.74 Close
R. Teat Place						+0.71 Close
Teat Length						+0.32 Long
Teat Sideview						-0.73 Close

Alta UK abide by the ADHB & Holstein UK established code of Advertising. Bulls tested free for genetic recessives will not show these codes for formatting reasons. Prices are subject to change. Terms and conditions apply.



PLI **+682** Rel 67%

AltaPOWERBUCK

65003213001199 | H07219

PEAK ALTAPOWERBUCK-ET
 AltaTIKI X PURSUIT X MEDLEY
 HO840M003213001199 | DOB 9/12/2020
 aAa 432 | DMS 246,234 | EFI 12.6 %
 Kappa-Casein: AB Beta-Casein: A1A2
 Genetic Codes: TC TD TE TL TP TR TV TY
 AHDB Dairy & Holstein UK 04/2024 - GENOMIC



CONFORMATION			
Type Merit	1.46	Mammary	1.71
Legs & Feet	0.88	Rel	55%

PRODUCTION (0 UK Daughters in 0 UK Herds)			
Milk	+949 Kgs	+74% Rel	
Protein	+26.3 Kgs	-0.05%	
Fat	+30.5 Kgs	-0.08%	

HEALTH & MANAGEMENT			
Lifespan	174	Ease of Milk	+0.74
Fertility	+9.7	Temperament	+0.2
SCC	-22	Maintenance	3
MAST	-2	Dairy Carcass	1.9
Calf Survival	-0.1	TB Advantage	2.4 50%
Lameness Advantage	+1.7	Gestation Length	-2 99%
Digital Dermatitis	+0.3	Feed Advantage	+73 45%
Healthy Cow	+262 58%	Enviro Cow	+3.1 70%

CALVING TRAITS			
Direct CE	0.4	+70% Rel	Maternal CE 1.4 +52% Rel

CONFORMATION (0 UK Daughters in 0 UK Herds)						
	-2	-1	0	1	2	
Stature						-0.57 Short
Chest Width						+1.29 Wide
Body Depth						-0.81 Shallow
Angularity						-0.28 Coarse
Rump Angle						+0.11 Low Pins
Thurl Width						+0.55 Wide
R. Legs-S View						-0.37 Straight
Foot Angle						+0.04 Steep
Locomotion						+1.08 Excellent
F. Udder Att.						+1.05 Tight
R. Udder Ht.						+1.34 Very high
Udder Cleft						-0.11 Broken
Udder Depth						+0.67 Above hock
F. Teat Place						-0.32 Outside
R. Teat Place						-0.41 Apart
Teat Length						+0.20 Long
Teat Sideview						+0.83 Apart

Alta UK abide by the ADHB & Holstein UK established code of Advertising. Bulls tested free for genetic recessives will not show these codes for formatting reasons. Prices are subject to change. Terms and conditions apply. Proud to use independent data powered by AHDB Dairy.



PLI **+554** Rel 66%

AltaQUIQUE

65003240482157

NEW

PEAK ALTAQUIQUE-ET
AltaKEVLOW X TROPIC X DOC
HO840M003240482157 | DOB 7/1/2022

aAa 324 | DMS 246,234 | EFI 12.3 %
Kappa-Casein: AE Beta-Casein: A1A2
Genetic Codes: TC TD TE TL TP TR TV TY
AHDB Dairy & Holstein UK 04/2024 - GENOMIC



CONFORMATION (0 UK Daughters in 0 UK Herds)

	-2	-1	0	1	2		
Stature						+1.31	Tall
Chest Width						+0.60	Wide
Body Depth						+0.48	Deep
Angularity						+0.97	Open Rib
Rump Angle						-1.61	High Pins
Thurl Width						+0.98	Wide
R. Legs-S View						+0.14	Sickled
Foot Angle						+0.56	Steep
Locomotion						+0.99	Excellent
F. Udder Att.						+1.57	Tight
R. Udder Ht.						+1.55	Very high
Udder Cleft						+1.75	Strong
Udder Depth						+1.32	Above hock
F. Teat Place						+1.69	Close
R. Teat Place						+1.60	Close
Teat Length						-1.07	Short
Teat Sideview						+0.01	Apart

Alta UK abide by the ADHB & Holstein UK established code of Advertising. Bulls tested free for genetic recessives will not show these codes for formatting reasons. Prices are subject to change. Terms and conditions apply.

CONFORMATION

Type Merit	1.15	Mammary	1.79
Legs & Feet	0.70	Rel	54%

PRODUCTION (0 UK Daughters in 0 UK Herds)

Milk	+641 Kgs	+73% Rel
Protein	+26.1 Kgs	+0.06%
Fat	+32.1 Kgs	+0.07%

HEALTH & MANAGEMENT

Lifespan	52	Ease of Milk	+0.45
Fertility	+1.7	Temperament	+0.2
SCC	-17	Maintenance	14
MAST	-1	Dairy Carcass	0.1
Calf Survival	0.0	TB Advantage	-0.3 44%
Lameness Advantage	+2.3	Gestation Length	-3 55%
Digital Dermatitis	+0.5	Feed Advantage	+14 45%
Healthy Cow	+130 57%	Enviro Cow	+2.3 69%

CALVING TRAITS

Direct CE	0.4 +63% Rel	Maternal CE	1.2 +50% Rel
-----------	--------------	-------------	--------------



PLI **+670** Rel 68%

AltaREGULUS

65003212150609 | HO6888

WINSTAR ALTAREGULUS-ET
AltaZAZZLE X CRIMSON X JEDI
HO840M003212150609 | DOB 6/6/2020

aAa 423 | DMS 345,234 | EFI 12.7 %
Kappa-Casein: BB Beta-Casein: A2A2
Genetic Codes: TC TD TE TL TP TR TV TY
AHDB Dairy & Holstein UK 04/2024 - GENOMIC



CONFORMATION (0 UK Daughters in 0 UK Herds)

	-2	-1	0	1	2		
Stature						+0.44	Tall
Chest Width						-0.26	Narrow
Body Depth						-1.07	Shallow
Angularity						-0.14	Coarse
Rump Angle						+1.15	Low Pins
Thurl Width						+0.64	Wide
R. Legs-S View						-0.45	Straight
Foot Angle						+0.57	Steep
Locomotion						-0.37	Poor
F. Udder Att.						+0.96	Tight
R. Udder Ht.						-0.30	Very Low
Udder Cleft						-0.31	Broken
Udder Depth						+1.32	Above hock
F. Teat Place						+0.40	Close
R. Teat Place						+0.23	Close
Teat Length						+0.03	Long
Teat Sideview						-0.96	Close

Alta UK abide by the ADHB & Holstein UK established code of Advertising. Bulls tested free for genetic recessives will not show these codes for formatting reasons. Prices are subject to change. Terms and conditions apply. Proud to use independent data powered by AHDB Dairy.

CONFORMATION

Type Merit	-0.18	Mammary	0.54
Legs & Feet	-0.50	Rel	58%

PRODUCTION (0 UK Daughters in 0 UK Herds)

Milk	+313 Kgs	+74% Rel
Protein	+23.5 Kgs	+0.15%
Fat	+43.1 Kgs	+0.36%

HEALTH & MANAGEMENT

Lifespan	92	Ease of Milk	+1.01
Fertility	+5.3	Temperament	+0.1
SCC	-19	Maintenance	2
MAST	-1	Dairy Carcass	0.9
Calf Survival	+2.2	TB Advantage	2.1 50%
Lameness Advantage	+2.0	Gestation Length	-2 99%
Digital Dermatitis	+0.3	Feed Advantage	+54 46%
Healthy Cow	+158 64%	Enviro Cow	+3.1 70%

CALVING TRAITS

Direct CE	-1.1 +73% Rel	Maternal CE	1.0 +54% Rel
-----------	---------------	-------------	--------------

Improve Conception Rates


with Alta CONCEPT PLUS high fertility sires




2-5%

CONVENTIONAL DAIRY
conception rate advantage
with CONCEPT PLUS


DxD sires



3-7%

SEXED SEMEN
conception rate advantage
with CONCEPT PLUS

511 sires



2-4%

BEEF X DAIRY
conception rate advantage
with CONCEPT PLUS

BxD sires



PLI **+804** Rel 66%

AltaSALMON

NEW

011H016941

OC D ALTASALMON-ET

ZAPPY X CONWAY X ACURA

HO840M003247752626 | DOB 11/23/2022

aAa 243 | DMS 234,345 | EFI 12.6 % | RHA 99%

Kappa-Casein BB | Beta-Casein A2A2

Haplotype HH6C | Genetic Codes TC TD TE TL TP TR TV TY

AHDB DAIRY & HOLSTEIN UK 04/2024 - GENOMIC



CONFORMATION (0 UK Daughters in 0 UK Herds)

	-2	-1	0	1	2		
Stature			█			-0.22	Short
Chest Width		█				-1.02	Narrow
Body Depth			█			-0.68	Shallow
Angularity				█		+1.60	Open Rib
Rump Angle				█		+1.34	Low Pins
Thurl Width				█		+0.67	Wide
R. Legs-S View				█		+1.49	Sickled
Foot Angle			█			-0.43	Low
Locomotion				█		+0.62	Excellent
F. Udder Att.				█		+0.61	Tight
R. Udder Ht.				█		+0.04	Very high
Udder Cleft				█		+0.06	Strong
Udder Depth				█		+0.12	Above hock
F. Teat Place				█		-0.06	Outside
R. Teat Place				█		+0.05	Apart
Teat Length				█		+0.20	Long
Teat Sideview				█		-0.28	Close

CONFORMATION

Type Merit	+0.93	Mammary	+0.46
Legs & Feet	+0.83	Rel	53%

PRODUCTION (0 UK Daughters in 0 UK Herds)

Milk	+803 Kgs	73% Rel
Protein	+32.7 Kgs	+0.07%
Fat	+48.7 Kgs	+0.18%

HEALTH & MANAGEMENT

Lifespan	+116	Ease of Milk	-0.20
Fertility	+6.9	Temperament	0.0
SCC	-16	Maintenance	-12
Mastitis	-2	Dairy Carcass	+0.8
Calf Survival	-0.1	TB Advantage	+2.4 43%
Lameness Advantage	+1.3	Gestation Length	-3 49%
Digital Dermatitis	+0.4	Feed Advantage	+151 45%
Healthy Cow	+181 56%	Enviro Cow	+4.0 68%

CALVING TRAITS

Direct CE	+0.2 63% Rel	Maternal CE	+0.9 52% Rel
-----------	--------------	-------------	--------------

Alta UK abide by the ADHB & Holstein UK established code of Advertising. Bulls tested free for genetic recessives will not show these codes for formatting reasons. Prices are subject to change. Terms and conditions apply. Proud to use independent data powered by AHDB Dairy.



PLI **+811** Rel 67%

AltaSEVERUS

65003224956127 | HO7221

PEAK ALTASEVERUS-ET
 AltaPLINKO X CRIMSON X DUKE
 HO840M003224956127 | DOB 2/8/2021
 aAa 324 | DMS 345,456 | EFI 12.3 %
 Kappa-Casein: AB Beta-Casein: A2A2
 Genetic Codes: TC TD TE TL TP TR TV TY
 AHDB Dairy & Holstein UK 04/2024 - GENOMIC



CONFORMATION (0 UK Daughters in 0 UK Herds)

	-2	-1	0	1	2		
Stature						-0.36	Short
Chest Width						-0.84	Narrow
Body Depth						-1.54	Shallow
Angularity						-0.15	Coarse
Rump Angle						+2.09	Low Pins
Thurl Width						-0.82	Narrow
R. Legs-S View						+0.83	Sickled
Foot Angle						+0.08	Steep
Locomotion						-0.71	Poor
F. Udder Att.						-0.81	Loose
R. Udder Ht.						-1.39	Very Low
Udder Cleft						-1.29	Broken
Udder Depth						-0.46	Below Hock
F. Teat Place						-0.88	Outside
R. Teat Place						-0.59	Apart
Teat Length						+0.05	Long
Teat Sideview						-0.50	Close

Alta UK abide by the ADHB & Holstein UK established code of Advertising. Bulls tested free for genetic recessives will not show these codes for formatting reasons. Prices are subject to change. Terms and conditions apply.

CONFORMATION

Type Merit	-1.27	Mammary	-1.23
Legs & Feet	-0.94	Rel	57%

PRODUCTION (0 UK Daughters in 0 UK Herds)

Milk	+749 Kgs	+74% Rel
Protein	+32.4 Kgs	+0.09%
Fat	+40.8 Kgs	+0.12%

HEALTH & MANAGEMENT

Lifespan	137	Ease of Milk	-0.92
Fertility	+13.7	Temperament	-0.1
SCC	-25	Maintenance	-9
MAST	-2	Dairy Carcass	1.4
Calf Survival	-1.1	TB Advantage	2.7 51%
Lameness Advantage	+1.0	Gestation Length	-4 99%
Digital Dermatitis		Feed Advantage	+169 46%
Healthy Cow	+205 58%	Enviro Cow	+4.1 70%

CALVING TRAITS

Direct CE	0.4 +73% Rel	Maternal CE	1.1 +54% Rel
-----------	--------------	-------------	--------------



PLI **+778** Rel 66%

AltaSILVEROAK

011HO16720

NEW

WET PEAK ALTASILVEROAK-ET
 AltaEXQUISITE X LEGACY X MATTERS
 HO840M003252198224 | DOB 11/23/2022
 aAa 342 | DMS 451,135 | EFI 12.1 % | RHA 99%
 Kappa-Casein AB | Beta-Casein A2A2
 Genetic Codes TC TD TE TL TP TR TR TV TY
 AHDB DAIRY & HOLSTEIN UK 04/2024- GENOMIC



CONFORMATION (0 UK Daughters in 0 UK Herds)

	-2	-1	0	1	2		
Stature						-0.71	Short
Chest Width						-0.59	Narrow
Body Depth						-1.63	Shallow
Angularity						-0.41	Coarse
Rump Angle						+0.62	Low Pins
Thurl Width						+0.02	Wide
R. Legs-S View						+0.05	Sickled
Foot Angle						+0.04	Steep
Locomotion						+0.26	Excellent
F. Udder Att.						+0.68	Tight
R. Udder Ht.						+0.82	Very high
Udder Cleft						-0.41	Strong
Udder Depth						+0.56	Above hock
F. Teat Place						+0.36	Close
R. Teat Place						-0.14	Close
Teat Length						-2.00	Short
Teat Sideview						+0.11	Apart

Alta UK abide by the ADHB & Holstein UK established code of Advertising. Bulls tested free for genetic recessives will not show these codes for formatting reasons. Prices are subject to change. Terms and conditions apply. Proud to use independent data powered by AHDB Dairy.

CONFORMATION

Type Merit	+0.37	Mammary	+0.84
Legs & Feet	+0.029	Rel	53%

PRODUCTION (0 UK Daughters in 0 UK Herds)

Milk	+409 Kgs	73% Rel
Protein	+22.3 Kgs	+0.01%
Fat	+44.4 Kgs	+0.32%

HEALTH & MANAGEMENT

Lifespan	+134	Ease of Milk	+0.83
Fertility	+7.4	Temperament	-0.13
SCC	-27	Maintenance	-10
Mastitis	-3	Dairy Carcass	+1.3
Calf Survival	+2.1	TB Advantage	+2.2 43%
Lameness Advantage	+0.9	Gestation Length	-1 48%
Digital Dermatitis	+0.0	Feed Advantage	+136 45%
Healthy Cow	+249 56%	Enviro Cow	+3.7 69%

CALVING TRAITS

Direct CE	0.0 63% Rel	Maternal CE	0.0 53% Rel
-----------	-------------	-------------	-------------



PLI **+598** Rel 66%

AltaSONADOR

65003224956562 | H07514

PEAK ALTASONADOR-ET
 AltaJUMP CUT X PURSUIT X MEDLEY
 H0840M003224956562 | DOB 6/5/2021
 aAa 432 | DMS 345,456 | EFI 12.5 %
 Kappa-Casein: AB Beta-Casein: A2A2
 Genetic Codes: TC TD TE TL TP TR TV TY
 AHDB Dairy & Holstein UK 04/2024 - GENOMIC



CONFORMATION (0 UK Daughters in 0 UK Herds)

	-2	-1	0	1	2		
Stature						+0.26	Tall
Chest Width						+1.19	Wide
Body Depth						+0.69	Deep
Angularity						+0.39	Open Rib
Rump Angle						+0.31	Low Pins
Thurl Width						+0.13	Wide
R. Legs-S View						+1.13	Sickled
Foot Angle						-0.68	Low
Locomotion						+0.61	Excellent
F. Udder Att.						-0.73	Loose
R. Udder Ht.						+0.28	Very high
Udder Cleft						+0.04	Strong
Udder Depth						-0.51	Below Hock
F. Teat Place						-0.05	Outside
R. Teat Place						+0.13	Close
Teat Length						-0.17	Short
Teat Sideview						+1.42	Apart

Alta UK abide by the ADHB & Holstein UK established code of Advertising. Bulls tested free for genetic recessives will not show these codes for formatting reasons. Prices are subject to change. Terms and conditions apply.

CONFORMATION

Type Merit	0.49	Mammary	0.05
Legs & Feet	0.58	Rel	54%

PRODUCTION (0 UK Daughters in 0 UK Herds)

Milk	+733 Kgs	+73% Rel
Protein	+26.8 Kgs	+0.03%
Fat	+42.9 Kgs	+0.15%

HEALTH & MANAGEMENT

Lifespan	61	Ease of Milk	+0.35
Fertility	+1.6	Temperament	+0.2
SCC	-15	Maintenance	9
MAST	-1	Dairy Carcass	1.7
Calf Survival	+2.3	TB Advantage	1.1 44%
Lameness Advantage	+0.7	Gestation Length	-1 55%
Digital Dermatitis	+0.1	Feed Advantage	+33 45%
Healthy Cow	+110 57%	Enviro Cow	+2.7 69%

CALVING TRAITS

Direct CE	-0.4 +63% Rel	Maternal CE	0.0 +52% Rel
-----------	---------------	-------------	--------------



PLI **+656** Rel 68%

AltaSULIEN

65003209641528 | H07429

PEAK ALTASULIEN-ET
 PURSUIT X AltaROBSON X DENVER
 H0840M003209641528 | DOB 10/26/2019
 aAa 243 | DMS 234,345 | EFI 11.7 %
 Kappa-Casein: AB Beta-Casein: A1A2
 Genetic Codes: TC TD TE TL TP TR TV TY
 AHDB Dairy & Holstein UK 04/2024 - GENOMIC



CONFORMATION (0 UK Daughters in 0 UK Herds)

	-2	-1	0	1	2		
Stature						+0.24	Tall
Chest Width						+1.21	Wide
Body Depth						+0.71	Deep
Angularity						+0.51	Open Rib
Rump Angle						+0.30	Low Pins
Thurl Width						+1.23	Wide
R. Legs-S View						+0.39	Sickled
Foot Angle						-0.17	Low
Locomotion						+2.06	Excellent
F. Udder Att.						+0.16	Tight
R. Udder Ht.						+0.69	Very high
Udder Cleft						-0.30	Broken
Udder Depth						+0.03	Above hock
F. Teat Place						+0.24	Close
R. Teat Place						-0.73	Apart
Teat Length						+0.47	Long
Teat Sideview						+0.90	Apart

Alta UK abide by the ADHB & Holstein UK established code of Advertising. Bulls tested free for genetic recessives will not show these codes for formatting reasons. Prices are subject to change. Terms and conditions apply. Proud to use independent data powered by AHDB Dairy.

CONFORMATION

Type Merit	1.41	Mammary	0.80
Legs & Feet	1.64	Rel	58%

PRODUCTION (0 UK Daughters in 0 UK Herds)

Milk	+458 Kgs	+74% Rel
Protein	+25.3 Kgs	+0.12%
Fat	+34.4 Kgs	+0.18%

HEALTH & MANAGEMENT

Lifespan	119	Ease of Milk	+0.59
Fertility	+3.7	Temperament	+0.3
SCC	-15	Maintenance	9
MAST	-2	Dairy Carcass	1.2
Calf Survival	+0.2	TB Advantage	2.1 51%
Lameness Advantage	+2.0	Gestation Length	0 99%
Digital Dermatitis	+0.6	Feed Advantage	+57 46%
Healthy Cow	+176 59%	Enviro Cow	+3.1 70%

CALVING TRAITS

Direct CE	-0.1 +78% Rel	Maternal CE	0.3 +54% Rel
-----------	---------------	-------------	--------------



PLI **+745** Rel 66%

AltaTOPGUNZ

65003213324012

PLAIN-KNOLL ALTATOPGUNZ-ET
AltaKEVLOW X ACURA X RESOLVE
HO840M003213324012 | DOB 7/9/2022

aAa 453 | DMS 345,456 | EFI 12.9 %
Kappa-Casein: BB Beta-Casein: A1A2
Genetic Codes: TC TD TE TL TP TR TV TY
AHDB Dairy & Holstein UK 04/2024 - GENOMIC



CONFORMATION (0 UK Daughters in 0 UK Herds)

	-2	-1	0	1	2		
Stature						-0.08	Short
Chest Width						-0.20	Narrow
Body Depth						-0.98	Shallow
Angularity						+0.55	Open Rib
Rump Angle						-0.32	High Pins
Thurl Width						-0.22	Narrow
R. Legs-S View						-0.70	Straight
Foot Angle						+0.62	Steep
Locomotion						+0.13	Excellent
F. Udder Att.						-0.06	Loose
R. Udder Ht.						-0.45	Very Low
Udder Cleft						-0.88	Broken
Udder Depth						-0.24	Below Hock
F. Teat Place						-0.73	Outside
R. Teat Place						-0.57	Apart
Teat Length						-0.57	Short
Teat Sideview						+0.01	Apart

Alta UK abide by the ADHB & Holstein UK established code of Advertising. Bulls tested free for genetic recessives will not show these codes for formatting reasons. Prices are subject to change. Terms and conditions apply.

CONFORMATION

Type Merit	0.01	Mammary	-0.30
Legs & Feet	0.11	Rel	53%

PRODUCTION (0 UK Daughters in 0 UK Herds)

Milk	+891 Kgs	+73% Rel
Protein	+35.3 Kgs	+0.06%
Fat	+42.2 Kgs	+0.07%

HEALTH & MANAGEMENT

Lifespan	101	Ease of Milk	+0.56
Fertility	+5.9	Temperament	+0.8
SCC	-14	Maintenance	-3
MAST	-1	Dairy Carcass	0.8
Calf Survival	-0.5	TB Advantage	3.4 42%
Lameness Advantage	+0.8	Gestation Length	-3 55%
Digital Dermatitis		Feed Advantage	+150 45%
Healthy Cow	+122 56%	Enviro Cow	+3.9 69%

CALVING TRAITS

Direct CE	-0.4 +63% Rel	Maternal CE	0.4 +49% Rel
-----------	---------------	-------------	--------------



PLI **+819** Rel 66%

AltaVANDYKE

65003247843547 | H07876

PROGENESIS ALTAVANDYKE-ET
AltaZEMINI X AltaPLINKO X CRIMSON
HO840M003247843547 | DOB 4/20/2022

aAa 234 | DMS 234,345 | EFI 12.5 %
Kappa-Casein: BB Beta-Casein: A2A2
Genetic Codes: TC TD TE TL TP TR TV TY
AHDB Dairy & Holstein UK 04/2024 - GENOMIC



CONFORMATION (0 UK Daughters in 0 UK Herds)

	-2	-1	0	1	2		
Stature						+0.27	Tall
Chest Width						-0.20	Narrow
Body Depth						-1.17	Shallow
Angularity						+0.36	Open Rib
Rump Angle						+0.46	Low Pins
Thurl Width						+0.49	Wide
R. Legs-S View						+0.72	Sickled
Foot Angle						-0.40	Low
Locomotion						+0.39	Excellent
F. Udder Att.						+0.34	Tight
R. Udder Ht.						-0.12	Very Low
Udder Cleft						-0.41	Broken
Udder Depth						+0.37	Above hock
F. Teat Place						-1.02	Outside
R. Teat Place						-0.93	Apart
Teat Length						+0.32	Long
Teat Sideview						-0.30	Close

Alta UK abide by the ADHB & Holstein UK established code of Advertising. Bulls tested free for genetic recessives will not show these codes for formatting reasons. Prices are subject to change. Terms and conditions apply. Proud to use independent data powered by AHDB Dairy.

CONFORMATION

Type Merit	0.01	Mammary	0.11
Legs & Feet	-0.03	Rel	53%

PRODUCTION (0 UK Daughters in 0 UK Herds)

Milk	+854 Kgs	+73% Rel
Protein	+34.8 Kgs	+0.07%
Fat	+53.5 Kgs	+0.21%

HEALTH & MANAGEMENT

Lifespan	95	Ease of Milk	+0.31
Fertility	+1.0	Temperament	+0.2
SCC	-25	Maintenance	0
MAST	-2	Dairy Carcass	1.1
Calf Survival	+0.7	TB Advantage	1.1 45%
Lameness Advantage	+2.6	Gestation Length	-1 49%
Digital Dermatitis	+0.7	Feed Advantage	+155 45%
Healthy Cow	+138 56%	Enviro Cow	+4.2 69%

CALVING TRAITS

Direct CE	-0.2 +63% Rel	Maternal CE	0.7 +53% Rel
-----------	---------------	-------------	--------------



PLI **+612** Rel 66%

CONFORMATION (0 UK Daughters in 0 UK Herds)

	-2	-1	0	1	2		
Stature						+0.19	Tall
Chest Width						-0.62	Narrow
Body Depth						-0.56	Shallow
Angularity						+1.30	Open Rib
Rump Angle						+0.35	Low Pins
Thurl Width						+0.52	Wide
R. Legs-S View						-0.57	Straight
Foot Angle						-0.48	Low
Locomotion						+1.03	Excellent
F. Udder Att.						+0.98	Tight
R. Udder Ht.						+1.40	Very high
Udder Cleft						+0.32	Strong
Udder Depth						+0.88	Above hock
F. Teat Place						+0.61	Close
R. Teat Place						+0.78	Close
Teat Length						-1.35	Short
Teat Sideview						+0.73	Apart

Alta UK abide by the ADHB & Holstein UK established code of Advertising. Bulls tested free for genetic recessives will not show these codes for formatting reasons. Prices are subject to change. Terms and conditions apply.

AltaWINX

65003224928451 | H07517

PEAK ALTAWINX-ET

AltaWHEELHOUSE X AltaZAZZLE X KING ROYAL

H0840M003224928451 | DOB 7/31/2021

aAa 243 | DMS 234,123 | EFI 11.9 %

Kappa-Casein: AA Beta-Casein: A2A2

Haplotype: HMW1 | Genetic Codes: MW TC TD TL TP TR TV TY

AHDB Dairy & Holstein UK 04/2024 - GENOMIC



CONFORMATION

Type Merit	1.25	Mammary	1.37
Legs & Feet	0.64	Rel	55%

PRODUCTION (0 UK Daughters in 0 UK Herds)

Milk	+1040 Kgs	+73% Rel
Protein	+26.9 Kgs	-0.08%
Fat	+36.1 Kgs	-0.06%

HEALTH & MANAGEMENT

Lifespan	113	Ease of Milk	+0.63
Fertility	+2.5	Temperament	+0.1
SCC	-14	Maintenance	-5
MAST	-2	Dairy Carcass	-0.1
Calf Survival	+0.4	TB Advantage	3.3 44%
Lameness Advantage	+2.9	Gestation Length	-2 55%
Digital Dermatitis	+0.9	Feed Advantage	+112 45%
Healthy Cow	+170 56%	Enviro Cow	+3.0 68%

CALVING TRAITS

Direct CE	0.6 +73% Rel	Maternal CE	0.6 +52% Rel
-----------	--------------	-------------	--------------



PLI **+631** Rel 66%

CONFORMATION (0 UK Daughters in 0 UK Herds)

	-2	-1	0	1	2		
Stature						-0.08	Short
Chest Width						+0.90	Wide
Body Depth						+0.14	Deep
Angularity						+1.02	Open Rib
Rump Angle						-1.20	High Pins
Thurl Width						+1.34	Wide
R. Legs-S View						+0.51	Sickled
Foot Angle						-0.90	Low
Locomotion						+0.53	Excellent
F. Udder Att.						+1.23	Tight
R. Udder Ht.						+2.02	Very high
Udder Cleft						+0.70	Strong
Udder Depth						+0.51	Above hock
F. Teat Place						+0.49	Close
R. Teat Place						+0.83	Close
Teat Length						-0.96	Short
Teat Sideview						+1.56	Apart

Alta UK abide by the ADHB & Holstein UK established code of Advertising. Bulls tested free for genetic recessives will not show these codes for formatting reasons. Prices are subject to change. Terms and conditions apply. Proud to use independent data powered by AHDB Dairy.

AltaWOODSIDE

64000014074900 | H07585

PEAK ALTAWOODSIDE-ET

AltaWHEELHOUSE X LIONEL X ACHIEVER

HOCANM000014074900 | DOB 7/19/2021

aAa 354 | DMS 135,345 | EFI 12.8 %

Kappa-Casein: AB Beta-Casein: A2A2

Haplotype: HMW1 | Genetic Codes: MW TC TD TL TP TR TV TY

AHDB Dairy & Holstein UK 04/2024 - GENOMIC



CONFORMATION

Type Merit	1.75	Mammary	2.07
Legs & Feet	0.33	Rel	55%

PRODUCTION (0 UK Daughters in 0 UK Herds)

Milk	+876 Kgs	+73% Rel
Protein	+29.2 Kgs	0.00%
Fat	+38.7 Kgs	+0.04%

HEALTH & MANAGEMENT

Lifespan	52	Ease of Milk	+1.24
Fertility	+2.5	Temperament	+0.4
SCC	-20	Maintenance	3
MAST	-2	Dairy Carcass	1.7
Calf Survival	+0.3	TB Advantage	0.3 42%
Lameness Advantage	+1.9	Gestation Length	-1 55%
Digital Dermatitis	+0.3	Feed Advantage	+64 45%
Healthy Cow	+143 57%	Enviro Cow	+2.7 68%

CALVING TRAITS

Direct CE	-0.1 +70% Rel	Maternal CE	0.3 +51% Rel
-----------	---------------	-------------	--------------



PLI **+764** Rel 66%

AltaYOUNBETCHA

65003236692425 | H07707

PEAK ALTAYOUNBETCHA-ET
AltaWHEELHOUSE X SOLUTION X MEDLEY
H0840M003236692425 | DOB 7/15/2021

aAa 432 | DMS 135,345 | EFI 12.5 %
Kappa-Casein: AB Beta-Casein: A2A2
Genetic Codes: TC TD TE TL TP TR TV TY
AHDB Dairy & Holstein UK 04/2024 - GENOMIC



CONFORMATION

Type Merit	0.37	Mammary	0.34
Legs & Feet	0.36	Rel	55%

PRODUCTION (0 UK Daughters in 0 UK Herds)

Milk	+717 Kgs	+73% Rel
Protein	+30.4 Kgs	+0.08%
Fat	+40.1 Kgs	+0.13%

HEALTH & MANAGEMENT

Lifespan	122	Ease of Milk	+0.18
Fertility	+5.7	Temperament	-0.3
SCC	-17	Maintenance	1
MAST	-2	Dairy Carcass	1.2
Calf Survival	+0.8	TB Advantage	0.3 43%
Lameness Advantage	+1.6	Gestation Length	-1 55%
Digital Dermatitis	+0.2	Feed Advantage	+127 45%
Healthy Cow	+183 57%	Enviro Cow	+3.7 68%

CALVING TRAITS

Direct CE	0.4 +72% Rel	Maternal CE	1.3 +51% Rel
-----------	--------------	-------------	--------------

CONFORMATION (0 UK Daughters in 0 UK Herds)

	-2	-1	0	1	2		
Stature						-0.94	Short
Chest Width						+1.47	Wide
Body Depth						-0.62	Shallow
Angularity						-0.72	Coarse
Rump Angle						+0.78	Low Pins
Thurl Width						+0.65	Wide
R. Legs-S View						+0.98	Sickled
Foot Angle						-0.81	Low
Locomotion						+0.66	Excellent
F. Udder Att.						-0.06	Loose
R. Udder Ht.						+0.28	Very high
Udder Cleft						-0.85	Broken
Udder Depth						-0.19	Below Hock
F. Teat Place						+0.06	Close
R. Teat Place						-0.28	Apart
Teat Length						-0.10	Short
Teat Sideview						+1.03	Apart

Alta UK abide by the ADHB & Holstein UK established code of Advertising. Bulls tested free for genetic recessives will not show these codes for formatting reasons. Prices are subject to change. Terms and conditions apply.



PLI **+704** Rel 68%

AltaZINGLER

65003213001126 | H06887

PEAK ALTAZINGLER-ET
AltaZAZZLE X AltaROBERT X FRAZZLED
H0840M003213001126 | DOB 4/4/2020

aAa 234 | DMS 561,126 | EFI 12.0 %
Kappa-Casein: AB Beta-Casein: A1A2
Genetic Codes: TC TD TE TL TP TR TV TY
AHDB Dairy & Holstein UK 04/2024 - GENOMIC



CONFORMATION

Type Merit	-0.42	Mammary	0.06
Legs & Feet	0.14	Rel	58%

PRODUCTION (0 UK Daughters in 0 UK Herds)

Milk	+474 Kgs	+74% Rel
Protein	+21.4 Kgs	+0.07%
Fat	+28.1 Kgs	+0.10%

HEALTH & MANAGEMENT

Lifespan	162	Ease of Milk	-0.13
Fertility	+15.3	Temperament	+0.3
SCC	-25	Maintenance	-4
MAST	-2	Dairy Carcass	0.6
Calf Survival	+0.3	TB Advantage	2.7 50%
Lameness Advantage	+2.7	Gestation Length	-3 99%
Digital Dermatitis	+0.6	Feed Advantage	+112 46%
Healthy Cow	+288 62%	Enviro Cow	+3.3 70%

CALVING TRAITS

Direct CE	0.4 +77% Rel	Maternal CE	1.2 +54% Rel
-----------	--------------	-------------	--------------

CONFORMATION (0 UK Daughters in 0 UK Herds)

	-2	-1	0	1	2		
Stature						-0.04	Short
Chest Width						-0.91	Narrow
Body Depth						-1.97	Shallow
Angularity						-1.20	Coarse
Rump Angle						+1.29	Low Pins
Thurl Width						-0.14	Narrow
R. Legs-S View						-0.14	Straight
Foot Angle						-0.06	Low
Locomotion						+0.40	Excellent
F. Udder Att.						+1.31	Tight
R. Udder Ht.						-1.03	Very Low
Udder Cleft						-1.22	Broken
Udder Depth						+1.39	Above hock
F. Teat Place						-0.99	Outside
R. Teat Place						-1.12	Apart
Teat Length						-0.30	Short
Teat Sideview						-1.73	Close

Alta UK abide by the ADHB & Holstein UK established code of Advertising. Bulls tested free for genetic recessives will not show these codes for formatting reasons. Prices are subject to change. Terms and conditions apply. Proud to use independent data powered by AHDB Dairy.

BEEF X DAIRY

Ask your breeding advisor about our range of available beef sires and options for male sexed Angus sires.

Scan the code to view our full beef x dairy lineup



BELGIAN BLUE



AltaSUPERBLUE

NL 898157947
AI code BB1836
Birthdate 02-22-2019

BELGIAN BLUE



KJELD

NL 944457429
AI code BB1655
Birthdate 13-02-2017

BLACK ANGUS



STEP UP

US 19379557
AI code AA1759
Birthdate 03-18-2018

BLACK ANGUS



CLASSIC

US 20323412
AI code 011AN02379
Birthdate 04-01-2022

BLACK ANGUS



BOOST

US 19973427
AI code 011AN02302
Birthdate 09-28-2020

SIMMENTAL



MISSILE

3594131
AI code SG1366
Birthdate 04-16-2018

LIMOUSIN



IFOR

MGD13-8897
AI code LN2553
Birthdate 09-26-2013

HEREFORD



TIMELINE

US PC02930348
AI code H9314
Birthdate 02-28-2009



PLI **+589** Rel 68%

AltaKAMARA-RED

63000577621479 | H07402

KOEPON ALTAKAMARA-RED-ET
RUBELS RED X AltaALTUVE*RC X SALVATORE RC
HONLDM000577621479 | DOB 7/1/2021

aAa 342516 | EFI 12.3 %
Kappa-Casein: BE Beta-Casein: A1A1
Genetic Codes: TC TD TE TL TP TV TY
AHDB Dairy & Holstein UK 04/2024 - GENOMIC



CONFORMATION (0 UK Daughters in 0 UK Herds)

	-2	-1	0	1	2		
Stature						+0.63	Tall
Chest Width						-0.30	Narrow
Body Depth						-0.28	Shallow
Angularity						+1.43	Open Rib
Rump Angle						-0.25	High Pins
Thurl Width						+1.55	Wide
R. Legs-S View						+2.14	Sickled
Foot Angle						-0.70	Low
Locomotion						+0.84	Excellent
F. Udder Att.						+1.40	Tight
R. Udder Ht.						+2.24	Very high
Udder Cleft						-0.10	Broken
Udder Depth						+1.39	Above hock
F. Teat Place						+0.92	Close
R. Teat Place						-0.82	Apart
Teat Length						-0.06	Short
Teat Sideview						-0.15	Close

Alta UK abide by the ADHB & Holstein UK established code of Advertising. Bulls tested free for genetic recessives will not show these codes for formatting reasons. Prices are subject to change. Terms and conditions apply.

CONFORMATION

Type Merit	1.78	Mammary	2.12
Legs & Feet	1.10	Rel	58%

PRODUCTION (0 UK Daughters in 0 UK Herds)

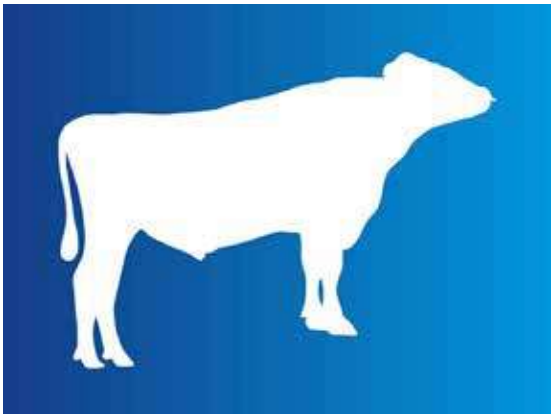
Milk	+946 Kgs	+74% Rel
Protein	+26.3 Kgs	-0.05%
Fat	+31.0 Kgs	-0.08%

HEALTH & MANAGEMENT

Lifespan	110	Ease of Milk	-0.08
Fertility	+1.6	Temperament	+0.7
SCC	-26	Maintenance	1
MAST	-1	Dairy Carcass	0.3
Calf Survival	+0.9	TB Advantage	2.1 51%
Lameness Advantage	+0.5	Gestation Length	-3 84%
Digital Dermatitis	+0.2	Feed Advantage	+109 46%
Healthy Cow	+174 60%	Enviro Cow	+2.9 71%

CALVING TRAITS

Direct CE	0.1 +70% Rel	Maternal CE	0.7 +54% Rel
-----------	--------------	-------------	--------------



PLI **+648** Rel 66%

AltaLAS-RED

65003252208438 | H07939

APRILDAY ALTALAS-RED-ET
AltaREFINE-RED X SIGNATURE *RC X HAWAI *RC
HO840M003252208438 | DOB 11/24/2022

aAa 432 | DMS 246,234 | EFI 11.4 %
Kappa-Casein: AE Beta-Casein: A1A2
Genetic Codes: TC TD TE TL TP
AHDB Dairy & Holstein UK 04/2024 - GENOMIC



CONFORMATION (0 UK Daughters in 0 UK Herds)

	-2	-1	0	1	2		
Stature						+0.62	Tall
Chest Width						-0.56	Narrow
Body Depth						-1.18	Shallow
Angularity						+0.50	Open Rib
Rump Angle						+1.48	Low Pins
Thurl Width						+0.21	Wide
R. Legs-S View						-0.27	Straight
Foot Angle						+0.40	Steep
Locomotion						+1.47	Excellent
F. Udder Att.						+0.76	Tight
R. Udder Ht.						+1.35	Very high
Udder Cleft						+0.09	Strong
Udder Depth						+1.37	Above hock
F. Teat Place						+0.41	Close
R. Teat Place						+0.39	Close
Teat Length						-1.26	Short
Teat Sideview						-0.25	Close

Alta UK abide by the ADHB & Holstein UK established code of Advertising. Bulls tested free for genetic recessives will not show these codes for formatting reasons. Prices are subject to change. Terms and conditions apply. Proud to use independent data powered by AHDB Dairy.

CONFORMATION

Type Merit	1.13	Mammary	1.30
Legs & Feet	1.39	Rel	53%

PRODUCTION (0 UK Daughters in 0 UK Herds)

Milk	+642 Kgs	+72% Rel
Protein	+24.2 Kgs	+0.03%
Fat	+35.1 Kgs	+0.10%

HEALTH & MANAGEMENT

Lifespan	125	Ease of Milk	+0.63
Fertility	+7.8	Temperament	+0.6
SCC	-11	Maintenance	1
MAST	0	Dairy Carcass	1.3
Calf Survival	+0.4	TB Advantage	-0.4 42%
Lameness Advantage	+3.3	Gestation Length	-1 53%
Digital Dermatitis	+1.0	Feed Advantage	+73 45%
Healthy Cow	+203 56%	Enviro Cow	+3.0 68%

CALVING TRAITS

Direct CE	-0.1 +63% Rel	Maternal CE	0.7 +49% Rel
-----------	---------------	-------------	--------------

AltaRUTILANT-RED

63000549118594 | H07519

KOEPEON ALRARUTILANT-RED-ET
 SPUTNIK RDC X AltaALTUVE*RC X SALVATORE RC
 HONLDM000549118594 | DOB 3/14/2021

aAa 432561 | DMS 123,126 | EFI 11.5 %
 Kappa-Casein: BB Beta-Casein: A1A1

Genetic Codes: TC TD TE TL TP TV TY
 AHDB Dairy & Holstein UK 04/2024 - GENOMIC



PLI **+671** Rel 66%



CONFORMATION (0 UK Daughters in 0 UK Herds)

	-2	-1	0	1	2		
Stature			█			+0.19	Tall
Chest Width			█			+0.13	Wide
Body Depth			█			-0.42	Shallow
Angularity			█			+0.51	Open Rib
Rump Angle			█			+1.70	Low Pins
Thurl Width			█			+0.72	Wide
R. Legs-S View			█			+0.26	Sickled
Foot Angle			█			+0.23	Steep
Locomotion			█			+1.46	Excellent
F. Udder Att.			█			+0.26	Tight
R. Udder Ht.			█			+1.23	Very high
Udder Cleft			█			-0.17	Broken
Udder Depth			█			+0.17	Above hock
F. Teat Place			█			+1.34	Close
R. Teat Place			█			+0.82	Close
Teat Length			█			+0.06	Long
Teat Sideview			█			+0.04	Apart

CONFORMATION

Type Merit	1.07	Mammary	0.61
Legs & Feet	1.46	Rel	54%

PRODUCTION (0 UK Daughters in 0 UK Herds)

Milk	+1035 Kgs	+73% Rel
Protein	+31.0 Kgs	-0.03%
Fat	+35.4 Kgs	-0.07%

HEALTH & MANAGEMENT

Lifespan	107	Ease of Milk	-0.40
Fertility	+2.6	Temperament	0.0
SCC	-25	Maintenance	1
MAST	-2	Dairy Carcass	0.7
Calf Survival	+1.3	TB Advantage	-1.1 44%
Lameness Advantage	+2.6	Gestation Length	-2 49%
Digital Dermatitis	+0.5	Feed Advantage	+69 45%
Healthy Cow	+190 56%	Enviro Cow	+3.0 69%

CALVING TRAITS

Direct CE	-0.2 +73% Rel	Maternal CE	0.1 +51% Rel
-----------	---------------	-------------	--------------

Alta UK abide by the ADHB & Holstein UK established code of Advertising. Bulls tested free for genetic recessives will not show these codes for formatting reasons. Prices are subject to change. Terms and conditions apply. Proud to use independent data powered by AHDB Dairy.



The world's most trusted dairy herd management tool

Make cost-effective decisions on every cow with DairyComp Unlimited:

- Market leading farm software package
- Make data driven decisions
- Fertility analysis that is unmatched
- Fast and simple data entry
- Customizable to a farm's requirements



Over 15 million cows and counting are managed worldwide by VAS products. Discover why producers from around the world – of all different sizes – rely on VAS for their herd management needs.

POLLED SIREs

AltaMONTU-PP

65003210987593 | H07374

TTM-LFD ALTAMONTU-PP

LIMELIGHT-P X KENNEDY X JEDI

H0840M003210987593 | DOB 6/8/2020

aAa 351 | DMS 246,234 | EFI 11.4 %

Kappa-Casein: EE Beta-Casein: A1A1

Genetic Codes: PP TC TD TE TL TR TV TY

AHDB Dairy & Holstein UK 04/2024 - GENOMIC



PLI **+618** Rel 67%



CONFORMATION (0 UK Daughters in 0 UK Herds)

	-2	-1	0	1	2		
Stature						-0.60	Short
Chest Width						-0.59	Narrow
Body Depth						-0.46	Shallow
Angularity						-0.06	Coarse
Rump Angle						-0.08	High Pins
Thurl Width						+0.52	Wide
R. Legs-S View						+0.79	Sickled
Foot Angle						-0.81	Low
Locomotion						+0.53	Excellent
F. Udder Att.						+1.17	Tight
R. Udder Ht.						+0.66	Very high
Udder Cleft						-0.09	Broken
Udder Depth						+0.79	Above hock
F. Teat Place						-0.36	Outside
R. Teat Place						+0.22	Close
Teat Length						-0.43	Short
Teat Sideview						-0.15	Close

Alta UK abide by the ADHB & Holstein UK established code of Advertising. Bulls tested free for genetic recessives will not show these codes for formatting reasons. Prices are subject to change. Terms and conditions apply.

CONFORMATION

Type Merit	0.59	Mammary	0.96
Legs & Feet	0.40	Rel	55%

PRODUCTION (0 UK Daughters in 0 UK Herds)

Milk	+345 Kgs	+73% Rel
Protein	+21.4 Kgs	+0.12%
Fat	+41.6 Kgs	+0.32%

HEALTH & MANAGEMENT

Lifespan	61	Ease of Milk	-0.18
Fertility	+1.6	Temperament	+0.6
SCC	-13	Maintenance	-9
MAST	-1	Dairy Carcass	0.0
Calf Survival	+0.6	TB Advantage	0.5 42%
Lameness Advantage	+2.8	Gestation Length	+1 96%
Digital Dermatitis	+0.3	Feed Advantage	+106 45%
Healthy Cow	+118 57%	Enviro Cow	+3.0 69%

CALVING TRAITS

Direct CE	0.4 +62% Rel	Maternal CE	0.2 +51% Rel
-----------	--------------	-------------	--------------

AltaWYLEE-PP-RC

65003214292445 | H07216

WINSTAR ALTAWYLEE-PP-ET

MONUMENT-P X WINDFALL X POWERBALL-P

H0840M003214292445 | DOB 4/13/2020

aAa 423 | DMS 345,135 | EFI 10.5 %

Kappa-Casein: AB Beta-Casein: A2A2

Genetic Codes: PO PP RC TC TD TE TL TV TY

AHDB Dairy & Holstein UK 04/2024 - GENOMIC



PLI **+584** Rel 67%



CONFORMATION (0 UK Daughters in 0 UK Herds)

	-2	-1	0	1	2		
Stature						-1.07	Short
Chest Width						+0.20	Wide
Body Depth						-0.73	Shallow
Angularity						+0.57	Open Rib
Rump Angle						+0.19	Low Pins
Thurl Width						-0.81	Narrow
R. Legs-S View						+0.66	Sickled
Foot Angle						-0.78	Low
Locomotion						-0.64	Poor
F. Udder Att.						+0.75	Tight
R. Udder Ht.						+0.45	Very high
Udder Cleft						+0.09	Strong
Udder Depth						+0.01	Above hock
F. Teat Place						+0.38	Close
R. Teat Place						+0.83	Close
Teat Length						-1.37	Short
Teat Sideview						+0.67	Apart

Alta UK abide by the ADHB & Holstein UK established code of Advertising. Bulls tested free for genetic recessives will not show these codes for formatting reasons. Prices are subject to change. Terms and conditions apply. Proud to use independent data powered by AHDB Dairy.

CONFORMATION

Type Merit	0.42	Mammary	0.83
Legs & Feet	-0.56	Rel	54%

PRODUCTION (0 UK Daughters in 0 UK Herds)

Milk	+752 Kgs	+74% Rel
Protein	+26.5 Kgs	+0.02%
Fat	+31.7 Kgs	+0.02%

HEALTH & MANAGEMENT

Lifespan	64	Ease of Milk	
Fertility	+1.0	Temperament	+1.1
SCC	-8	Maintenance	-10
MAST	-1	Dairy Carcass	0.8
Calf Survival	+2.5	TB Advantage	2.3 45%
Lameness Advantage	+1.6	Gestation Length	-1 94%
Digital Dermatitis	+0.3	Feed Advantage	+159 45%
Healthy Cow	+98 57%	Enviro Cow	+3.0 69%

CALVING TRAITS

Direct CE	0.0 +63% Rel	Maternal CE	-0.4 +52% Rel
-----------	--------------	-------------	---------------

DAUGHTER PROVEN SIRES



Fugazza Antonio Tapla
Fugazza Holsteins Farm
Piacenza, Italy

PLI **+658** Rel 94%

AltaANTONIO

65003138948148 | H05198

AURORA ALTAANTONIO-ET
BANDARES X COMMANDER X MAYFIELD
H0840M003138948148 | DOB 10/16/2016

aAa 351 | DMS 135,561 | EFI 10.7 %
Kappa-Casein: BB Beta-Casein: A2A2
Genetic Codes: TC TD TE TL TP TR TY TY

AHDB Dairy & Holstein UK 04/2024 - DAUGHTER PROVEN



CONFORMATION (113 UK Daughters in 18 UK Herds) (965 D | 257 H 96%R US)

	-2	-1	0	1	2		
Stature						-0.63	Short
Chest Width						+1.07	Wide
Body Depth						+1.19	Deep
Angularity						+0.88	Open Rib
Rump Angle						+0.76	Low Pins
Thurl Width						+0.57	Wide
R. Legs-S View						+1.63	Sickled
Foot Angle						-2.13	Low
Locomotion						+1.62	Excellent
F. Udder Att.						-0.12	Loose
R. Udder Ht.						+0.04	Very high
Udder Cleft						-0.25	Broken
Udder Depth						-1.12	Below Hock
F. Teat Place						+1.17	Close
R. Teat Place						+0.69	Close
Teat Length						-1.25	Short
Teat Sideview						+0.66	Apart

Alta UK abide by the ADHB & Holstein UK established code of Advertising. Bulls tested free for genetic recessives will not show these codes for formatting reasons. Prices are subject to change. Terms and conditions apply.

CONFORMATION

Type Merit	1.21	Mammary	0.24
Legs & Feet	1.47	Rel	90%

PRODUCTION (422 UK Daughters in 65 UK Herds)(2959 D | 620 H 15%US)

Milk	+682 Kgs	+99% Rel
Protein	+27.3 Kgs	+0.05%
Fat	+31.5 Kgs	+0.05%

HEALTH & MANAGEMENT

Lifespan	95	Ease of Milk	+2.11
Fertility	+8.5	Temperament	+0.4
SCC	-7	Maintenance	0
MAST	0	Dairy Carcass	0.0
Calf Survival	+2.4	TB Advantage	-7.7 95%
Lameness Advantage	+2.2	Gestation Length	+1 99%
Digital Dermatitis	+0.7	Feed Advantage	+88 62%
Healthy Cow	+186 88%	Enviro Cow	+3.0 98%

CALVING TRAITS

Direct CE	-0.2 +91% Rel	Maternal CE	-0.5 +78% Rel
-----------	---------------	-------------	---------------



PLI **+637** Rel 77%

AltaCRAZED

65003205436551 | H06422

PEAK ALTACRAZED-ET
AltaCABOT X FRAZZLED X MONTROSS
H0840M003205436551 | DOB 6/18/2019

aAa 354 | DMS 345,135 | EFI 12.7 %
Kappa-Casein: BB Beta-Casein: A2A2
Haplotype: HH6C | Genetic Codes: TC TD TL TP TR TY TY

AHDB Dairy & Holstein UK 04/2024 - DAUGHTER PROVEN



CONFORMATION (0 UK Daughters in 0 UK Herds) (82 D | 10 H 90%R US)

	-2	-1	0	1	2		
Stature						-1.29	Short
Chest Width						+0.46	Wide
Body Depth						-1.10	Shallow
Angularity						-0.97	Coarse
Rump Angle						+0.32	Low Pins
Thurl Width						-0.11	Narrow
R. Legs-S View						-0.19	Straight
Foot Angle						-0.34	Low
Locomotion						+0.65	Excellent
F. Udder Att.						+0.01	Tight
R. Udder Ht.						+0.17	Very high
Udder Cleft						-0.15	Broken
Udder Depth						+0.39	Above hock
F. Teat Place						-0.51	Outside
R. Teat Place						-0.34	Apart
Teat Length						-0.86	Short
Teat Sideview						-0.59	Close

Alta UK abide by the ADHB & Holstein UK established code of Advertising. Bulls tested free for genetic recessives will not show these codes for formatting reasons. Prices are subject to change. Terms and conditions apply. Proud to use independent data powered by AHDB Dairy.

CONFORMATION

Type Merit	0.20	Mammary	0.47
Legs & Feet	0.36	Rel	72%

PRODUCTION (0 UK Daughters in 0 UK Herds) (772 D | 61 H 85%US)

Milk	+344 Kgs	+85% Rel
Protein	+20.5 Kgs	+0.11%
Fat	+32.4 Kgs	+0.22%

HEALTH & MANAGEMENT

Lifespan	58	Ease of Milk	-0.43
Fertility	+4.9	Temperament	-0.2
SCC	-29	Maintenance	-8
MAST	-4	Dairy Carcass	2.2
Calf Survival	+0.1	TB Advantage	2.1 52%
Lameness Advantage	+1.0	Gestation Length	-4 99%
Digital Dermatitis	+0.2	Feed Advantage	+137 54%
Healthy Cow	+176 66%	Enviro Cow	+2.8 79%

CALVING TRAITS

Direct CE	0.8 +78% Rel	Maternal CE	0.4 +59% Rel
-----------	--------------	-------------	--------------

DAUGHTER PROVEN SIRES



PLI **+602** Rel 72%

AltaGIVEAWAY

64000013165419 | H07501

HEIDIFARM ALTAGIVEAWAY-ET
GAMECHANGER X ROMERO X TESLA
HOCANM000013165419 | DOB 8/7/2019

aAa | DMS 561,135 | EFI 11.5 %
Kappa-Casein: BE Beta-Casein: A1A2
Genetic Codes: TC TD TE TL TP TR TV TY
AHDB Dairy & Holstein UK 04/2024 - DAUGHTER PROVEN



CONFORMATION

Type Merit	0.53	Mammary	0.60
Legs & Feet	0.60	Rel	55%

PRODUCTION (0 UK Daughters in 0 UK Herds) (204 D | 19 H 100%US)

Milk	+719 Kgs	+82% Rel
Protein	+27.8 Kgs	+0.05%
Fat	+35.6 Kgs	+0.07%

HEALTH & MANAGEMENT

Lifespan	43	Ease of Milk	-0.99
Fertility	-2.3	Temperament	-0.7
SCC	-20	Maintenance	-18
MAST	-1	Dairy Carcass	1.5
Calf Survival	+1.1	TB Advantage	2.2 43%
Lameness Advantage	+1.2	Gestation Length	0 86%
Digital Dermatitis	+0.1	Feed Advantage	+163 45%
Healthy Cow	+80 60%	Enviro Cow	+3.0 74%

CALVING TRAITS

Direct CE	0.3 +73% Rel	Maternal CE	-0.5 +55% Rel
-----------	--------------	-------------	---------------

CONFORMATION (0 UK Daughters in 0 UK Herds) (85 D | 9 H 89%R US)

	-2	-1	0	1	2		
Stature						-1.44	Short
Chest Width						-0.71	Narrow
Body Depth						-1.14	Shallow
Angularity						+0.18	Open Rib
Rump Angle						-0.96	High Pins
Thurl Width						-0.83	Narrow
R. Legs-S View						-1.07	Straight
Foot Angle						+1.07	Steep
Locomotion						+0.68	Excellent
F. Udder Att.						+0.97	Tight
R. Udder Ht.						+0.64	Very high
Udder Cleft						-0.30	Broken
Udder Depth						+0.19	Above hock
F. Teat Place						-0.21	Outside
R. Teat Place						+0.27	Close
Teat Length						+0.05	Long
Teat Sideview						-0.77	Close

Alta UK abide by the ADHB & Holstein UK established code of Advertising. Bulls tested free for genetic recessives will not show these codes for formatting reasons. Prices are subject to change. Terms and conditions apply.



Alfra Hailed #107
Franciosi Holsteins; Italy

PLI **+438** Rel 79%

AltaHAILED

65003207410295 | H06526

MATCREST HAILED-ET
AltaHOTJOB X BURLEY X MONTROSS
HO840M003207410295 | DOB 5/2/2019

aAa 423 | DMS 345,135 | EFI 10.7 %
Kappa-Casein: AA Beta-Casein: A1A2
Genetic Codes: TC TD TE TL TP TR TV TY
AHDB Dairy & Holstein UK 04/2024 - DAUGHTER PROVEN



CONFORMATION

Type Merit	1.02	Mammary	2.08
Legs & Feet	-0.30	Rel	76%

PRODUCTION (0 UK Daughters in 0 UK Herds) (604 D | 132 H 50%US)

Milk	+833 Kgs	+85% Rel
Protein	+25.3 Kgs	-0.02%
Fat	+35.3 Kgs	+0.02%

HEALTH & MANAGEMENT

Lifespan	58	Ease of Milk	+1.95
Fertility	-2.7	Temperament	+0.6
SCC	+5	Maintenance	-1
MAST	+1	Dairy Carcass	2.7
Calf Survival	-1.0	TB Advantage	1.0 51%
Lameness Advantage	+1.8	Gestation Length	-2 99%
Digital Dermatitis	+0.2	Feed Advantage	+48 57%
Healthy Cow	+16 68%	Enviro Cow	+2.4 80%

CALVING TRAITS

Direct CE	0.5 +79% Rel	Maternal CE	1.2 +59% Rel
-----------	--------------	-------------	--------------

CONFORMATION (0 UK Daughters in 0 UK Herds) (195 D | 58 H 95%R US)

	-2	-1	0	1	2		
Stature						+0.62	Tall
Chest Width						-0.64	Narrow
Body Depth						-1.07	Shallow
Angularity						+1.17	Open Rib
Rump Angle						-1.78	High Pins
Thurl Width						+1.19	Wide
R. Legs-S View						+1.15	Sickled
Foot Angle						-0.53	Low
Locomotion						-0.41	Poor
F. Udder Att.						+1.38	Tight
R. Udder Ht.						+1.93	Very high
Udder Cleft						+2.49	Strong
Udder Depth						+1.09	Above hock
F. Teat Place						+0.38	Close
R. Teat Place						+1.40	Close
Teat Length						-0.45	Short
Teat Sideview						+1.21	Apart

Alta UK abide by the ADHB & Holstein UK established code of Advertising. Bulls tested free for genetic recessives will not show these codes for formatting reasons. Prices are subject to change. Terms and conditions apply. Proud to use independent data powered by AHDB Dairy.

DAUGHTER PROVEN SIRES



PLI **+317** Rel 88%

AltaINDIGO

65003147839890 | HO5843

PEAK ALTAINDIGO-ET
 IMAX X DRACO X SUPERSIRE
 HO840M003147839890 | DOB 11/21/2017
 aAa 342 | DMS 345,135 | EFI 12.2 %
 Kappa-Casein: AE Beta-Casein: A1A2
 Genetic Codes: DAUGHTER PROVEN BANNER- CP511 511
 AHDB Dairy & Holstein UK 04/2024 - DAUGHTER PROVEN



CONFORMATION (31 UK Daughters in 10 UK Herds) (206 D | 67 H 93%R US)

	-2	-1	0	1	2		
Stature						+0.56	Tall
Chest Width						+0.75	Wide
Body Depth						-0.12	Shallow
Angularity						+1.02	Open Rib
Rump Angle						+0.31	Low Pins
Thurl Width						+0.95	Wide
R. Legs-S View						+0.54	Sickled
Foot Angle						-0.07	Low
Locomotion						+1.31	Excellent
F. Udder Att.						+0.80	Tight
R. Udder Ht.						+1.58	Very high
Udder Cleft						+0.68	Strong
Udder Depth						+0.75	Above hock
F. Teat Place						-0.27	Outside
R. Teat Place						+0.07	Close
Teat Length						+1.28	Long
Teat Sideview						+0.48	Apart

Alta UK abide by the ADHB & Holstein UK established code of Advertising. Bulls tested free for genetic recessives will not show these codes for formatting reasons. Prices are subject to change. Terms and conditions apply.

CONFORMATION

Type Merit	1.74	Mammary	1.77
Legs & Feet	1.28	Rel	81%

PRODUCTION (105 UK Daughters in 25 UK Herds)(1358 D | 276 H 36%US)

Milk	+394 Kgs	+96% Rel
Protein	+15.1 Kgs	+0.02%
Fat	+22.4 Kgs	+0.08%

HEALTH & MANAGEMENT

Lifespan	64	Ease of Milk	+0.46
Fertility	-4.3	Temperament	+0.0
SCC	-1	Maintenance	8
MAST	+1	Dairy Carcass	2.5
Calf Survival	+2.6	TB Advantage	2.3 50%
Lameness Advantage	+2.2	Gestation Length	-2 99%
Digital Dermatitis	+0.6	Feed Advantage	-28 59%
Healthy Cow	+68 77%	Enviro Cow	+1.5 92%

CALVING TRAITS

Direct CE	-0.3 +89% Rel	Maternal CE	0.1 +59% Rel
-----------	---------------	-------------	--------------



PLI **+551** Rel 70%

AltaMAGNIFIQUE

65003213001110 | HO6776

PEAK ALTAMAGNIFIQUE-ET
 MAESTRO X POSITIVE X MEDLEY
 HO840M003213001110 | DOB 1/20/2020
 aAa 423 | DMS 123,126 | EFI 11.8 %
 Kappa-Casein: AB Beta-Casein: A1A2
 Haplotype: HMW1 | Genetic Codes: MW TC TD TL TP TR TV TY
 AHDB Dairy & Holstein UK 04/2024 - DAUGHTER PROVEN



CONFORMATION (0 UK Daughters in 0 UK Herds) (59 D | 8 H 87%R US)

	-2	-1	0	1	2		
Stature						+0.47	Tall
Chest Width						+1.49	Wide
Body Depth						+0.72	Deep
Angularity						+0.23	Open Rib
Rump Angle						+2.33	Low Pins
Thurl Width						+1.42	Wide
R. Legs-S View						+0.23	Sickled
Foot Angle						+0.40	Steep
Locomotion						+0.29	Excellent
F. Udder Att.						+0.95	Tight
R. Udder Ht.						+0.36	Very high
Udder Cleft						-0.02	Broken
Udder Depth						+0.34	Above hock
F. Teat Place						+1.93	Close
R. Teat Place						+1.93	Close
Teat Length						-1.88	Short
Teat Sideview						-0.06	Close

Alta UK abide by the ADHB & Holstein UK established code of Advertising. Bulls tested free for genetic recessives will not show these codes for formatting reasons. Prices are subject to change. Terms and conditions apply. Proud to use independent data powered by AHDB Dairy.

CONFORMATION

Type Merit	0.71	Mammary	0.85
Legs & Feet	0.26	Rel	56%

PRODUCTION (0 UK Daughters in 0 UK Herds) (112 D | 22 H 100% US)

Milk	+425 Kgs	+81% Rel
Protein	+22.3 Kgs	+0.10%
Fat	+32.8 Kgs	+0.18%

HEALTH & MANAGEMENT

Lifespan	92	Ease of Milk	+0.91
Fertility	+7.4	Temperament	+0.2
SCC	-2	Maintenance	13
MAST	0	Dairy Carcass	0.6
Calf Survival	+0.2	TB Advantage	2.7 44%
Lameness Advantage	-0.2	Gestation Length	-2 99%
Digital Dermatitis	-0.1	Feed Advantage	+32 45%
Healthy Cow	+124 64%	Enviro Cow	+2.7 74%

CALVING TRAITS

Direct CE	0.5 +78% Rel	Maternal CE	1.0 +52% Rel
-----------	--------------	-------------	--------------

DAUGHTER PROVEN SIRES

AltaTRACKSTER

65003205436268 | HO6602

PEAK ALTATRACKSTER-ET
PURSUIT X RESOLVE X YODER
HO840M003205436268 | DOB 8/16/2019

aAa 342 | DMS 246,456 | EFI 11.5 %
Kappa-Casein: AB Beta-Casein: A1A2
Genetic Codes: TC TD TE TL TP TR TV TY

AHDB Dairy & Holstein UK 04/2024 - DAUGHTER PROVEN



PLI **+555** Rel 68%

CONFORMATION (0 UK Daughters in 0 UK Herds) (0 D | 0 H 80%R US)

	-2	-1	0	1	2		
Stature						+1.55	Tall
Chest Width						+1.10	Wide
Body Depth						+0.10	Deep
Angularity						+0.05	Open Rib
Rump Angle						-0.51	High Pins
Thurl Width						+1.62	Wide
R. Legs-S View						-1.13	Straight
Foot Angle						+1.29	Steep
Locomotion						+1.49	Excellent
F. Udder Att.						+1.61	Tight
R. Udder Ht.						+1.66	Very high
Udder Cleft						+1.20	Strong
Udder Depth						+1.90	Above hock
F. Teat Place						+1.38	Close
R. Teat Place						+0.95	Close
Teat Length						0.00	Short
Teat Sideview						+0.62	Apart

Alta UK abide by the ADHB & Holstein UK established code of Advertising. Bulls tested free for genetic recessives will not show these codes for formatting reasons. Prices are subject to change. Terms and conditions apply.

CONFORMATION

Type Merit	1.49	Mammary	2.33
Legs & Feet	1.47	Rel	58%

PRODUCTION (0 UK Daughters in 0 UK Herds) (97 D | 8 H 100%US)

Milk	+367 Kgs	+74% Rel
Protein	+19.2 Kgs	+0.08%
Fat	+22.2 Kgs	+0.09%

HEALTH & MANAGEMENT

Lifespan	125	Ease of Milk	+1.02
Fertility	+7.6	Temperament	
SCC	-21	Maintenance	21
MAST	-3	Dairy Carcass	0.8
Calf Survival	+0.7	TB Advantage	1.2 49%
Lameness Advantage	+1.9	Gestation Length	-1 99%
Digital Dermatitis	+0.4	Feed Advantage	-36 46%
Healthy Cow	+250 59%	Enviro Cow	+2.2 70%

CALVING TRAITS

Direct CE	-0.6 +76% Rel	Maternal CE	1.4 +54% Rel
-----------	---------------	-------------	--------------

AltaWHEELHOUSE

65003209641362 | HO6603

PEAK WHEELHOUSE-ET
PURSUIT X DUKE X RUBICON
HO840M003209641362 | DOB 9/2/2019

aAa 423 | DMS 135,345 | EFI 12.3 %
Kappa-Casein: AB Beta-Casein: A2A2
Haplotype: HMW1 | Genetic Codes: MW TC TD TL TP TR TV TY

AHDB Dairy & Holstein UK 04/2024 - DAUGHTER PROVEN



PLI **+569** Rel 78%

CONFORMATION (0 UK Daughters in 0 UK Herds) (161 D | 20 H 96%R US)

	-2	-1	0	1	2		
Stature						+0.01	Tall
Chest Width						+1.30	Wide
Body Depth						+0.40	Deep
Angularity						+0.56	Open Rib
Rump Angle						+1.86	Low Pins
Thurl Width						+2.12	Wide
R. Legs-S View						+0.02	Sickled
Foot Angle						-1.02	Low
Locomotion						+0.61	Excellent
F. Udder Att.						-0.09	Loose
R. Udder Ht.						+0.90	Very high
Udder Cleft						+0.35	Strong
Udder Depth						+0.09	Above hock
F. Teat Place						+1.31	Close
R. Teat Place						+1.05	Close
Teat Length						-0.97	Short
Teat Sideview						+1.19	Apart

Alta UK abide by the ADHB & Holstein UK established code of Advertising. Bulls tested free for genetic recessives will not show these codes for formatting reasons. Prices are subject to change. Terms and conditions apply. Proud to use independent data powered by AHDB Dairy.

CONFORMATION

Type Merit	1.08	Mammary	1.17
Legs & Feet	0.13	Rel	75%

PRODUCTION (0 UK Daughters in 0 UK Herds) (327 D | 66 H 77% US)

Milk	+656 Kgs	+84% Rel
Protein	+23.1 Kgs	+0.02%
Fat	+36.4 Kgs	+0.11%

HEALTH & MANAGEMENT

Lifespan	110	Ease of Milk	+0.34
Fertility	+5.6	Temperament	+0.1
SCC	-10	Maintenance	7
MAST	-1	Dairy Carcass	1.3
Calf Survival	-1.0	TB Advantage	2.3 51%
Lameness Advantage	+2.1	Gestation Length	0 99%
Digital Dermatitis	+0.4	Feed Advantage	+30 56%
Healthy Cow	+148 67%	Enviro Cow	+2.7 79%

CALVING TRAITS

Direct CE	0.5 +80% Rel	Maternal CE	1.4 +58% Rel
-----------	--------------	-------------	--------------

DAUGHTER PROVEN SIRES

AltaZAREK Group
Arisi Holsteins; Cremona, Italy



PLI **+646** Rel 97%

CONFORMATION (426 UK Daughters in 59 UK Herds) (6017 D | 798 H 98%R US)

	-2	-1	0	1	2		
Stature						-0.22	Short
Chest Width						-1.04	Narrow
Body Depth						-2.43	Shallow
Angularity						-0.35	Coarse
Rump Angle						-0.68	High Pins
Thurl Width						-1.28	Narrow
R. Legs-S View						+1.70	Sickled
Foot Angle						-1.38	Low
Locomotion						+0.61	Excellent
F. Udder Att.						+1.78	Tight
R. Udder Ht.						+0.21	Very high
Udder Cleft						-1.60	Broken
Udder Depth						+1.48	Above hock
F. Teat Place						-1.15	Outside
R. Teat Place						-1.65	Apart
Teat Length						+0.33	Long
Teat Sideview						+0.21	Apart

Alta UK abide by the ADHB & Holstein UK established code of Advertising. Bulls tested free for genetic recessives will not show these codes for formatting reasons. Prices are subject to change. Terms and conditions apply.

AltaZAREK

63000685695366 | HO5734

PEAK ALTAZAREK-ET

AltaTOPSHOT X RUBICON X JABIR

HONLDM000685695366 | DOB 7/16/2017

aAa 342516 | DMS 123,126 | EFI 12.1 %

Kappa-Casein: AB Beta-Casein: A2A2

Genetic Codes: TC TD TE TL TP TR TV TY

AHDB Dairy & Holstein UK 04/2024 - DAUGHTER PROVEN



CONFORMATION

Type Merit	0.46	Mammary	1.04
Legs & Feet	0.37	Rel	96%

PRODUCTION (1282 UK Daughters in 148 UK Herds) (14216 D | 1628 H 18%US)

Milk	+971 Kgs	+99% Rel
Protein	+32.5 Kgs	+0.01%
Fat	+39.3 Kgs	0.00%

HEALTH & MANAGEMENT

Lifespan	101	Ease of Milk	+0.16
Fertility	-2.9	Temperament	-0.4
SCC	-3	Maintenance	-9
MAST	-1	Dairy Carcass	1.1
Calf Survival	+1.9	TB Advantage	1.2 98%
Lameness Advantage	+3.7	Gestation Length	-3 99%
Digital Dermatitis	+0.6	Feed Advantage	+114 63%
Healthy Cow	+102 93%	Enviro Cow	+3.4 99%

CALVING TRAITS

Direct CE	-0.1 +94% Rel	Maternal CE	1.3 +82% Rel
-----------	---------------	-------------	--------------

AltaZEOLITE

65003215425436 | HO7222

PEAK ALTAZEOLITE-ET

AltaZAZZLE X POSITIVE X MEDLEY

HO840M003215425436 | DOB 4/27/2020

aAa 432 | DMS 561,135 | EFI 12.1 %

Kappa-Casein: BB Beta-Casein: A1A2

Haplotype: HH6C HMW1 | Genetic Codes: MW TC TD TL TP TR TV TY

AHDB Dairy & Holstein UK 04/2024 - DAUGHTER PROVEN



CONFORMATION

Type Merit	0.22	Mammary	0.52
Legs & Feet	0.05	Rel	57%

PRODUCTION (0 UK Daughters in 0 UK Herds) (0 D | 0 H 100% US)

Milk	+636 Kgs	+74% Rel
Protein	+28.3 Kgs	+0.08%
Fat	+38.4 Kgs	+0.14%

HEALTH & MANAGEMENT

Lifespan	113	Ease of Milk	+0.58
Fertility	+9.1	Temperament	+0.5
SCC	-14	Maintenance	-1
MAST	-1	Dairy Carcass	0.4
Calf Survival	+1.2	TB Advantage	1.9 49%
Lameness Advantage	+1.2	Gestation Length	0 99%
Digital Dermatitis	+0.5	Feed Advantage	+79 46%
Healthy Cow	+191 59%	Enviro Cow	+3.3 70%

CALVING TRAITS

Direct CE	0.3 +75% Rel	Maternal CE	1.1 +53% Rel
-----------	--------------	-------------	--------------



PLI **+711** Rel 68%

CONFORMATION (0 UK Daughters in 0 UK Herds) (12 D | 2 H 83%R US)

	-2	-1	0	1	2		
Stature						+0.06	Tall
Chest Width						-0.13	Narrow
Body Depth						-1.26	Shallow
Angularity						-0.14	Coarse
Rump Angle						+1.96	Low Pins
Thurl Width						+0.25	Wide
R. Legs-S View						-0.20	Straight
Foot Angle						+0.27	Steep
Locomotion						+0.29	Excellent
F. Udder Att.						+1.00	Tight
R. Udder Ht.						+0.11	Very high
Udder Cleft						-0.45	Broken
Udder Depth						+0.87	Above hock
F. Teat Place						0.00	Outside
R. Teat Place						-0.17	Apart
Teat Length						-1.79	Short
Teat Sideview						-0.77	Close

Alta UK abide by the ADHB & Holstein UK established code of Advertising. Bulls tested free for genetic recessives will not show these codes for formatting reasons. Prices are subject to change. Terms and conditions apply. Proud to use independent data powered by AHDB Dairy.

There are *TWO* Alta 4-EVENT COWS in the maternity pen!



During the FRESH event, the TWO 4-EVENT COWS include the cow that just freshened and her newborn heifer calf that is a future member of your milking herd.

HOW DO WE HELP BOTH THE COW AND CALF BECOME ALTA 4-EVENT COWS?



FOR YOUR FRESH COW

Rumilife CAL24 calcium supplement

- ◆ Uniquely formulated calcium bolus
- ◆ Contains Vitamin D & Magnesium
- ◆ Sustained 24 hour calcium release
- ◆ 100gm Calcium application
- ◆ 2 boluses with 1 application



FOR YOUR NEWBORN CALF

Calf's Choice Total 100

- ◆ Whole Bovine Colostrum
- ◆ Safe & Effective
- ◆ High in colostrum fat
- ◆ Convenient
- ◆ GMP+ FSA Assured

Talk to your trusted Alta advisor and help them both become Alta 4-EVENT COWS!

Alta Ltd

Fountain Court, 2 Victoria Square
St Albans, Hertfordshire AL1 3TF | Tel: 01727884534
info@altagenetics.com | uk.altagenetics.com

