



# Holstein Directory

December 2024



Clelor Zemini Darci; Maple Lawn Farm, Canada  
Photo by Patty Jones



[uk.altagenetics.com](http://uk.altagenetics.com)





## Alta COW WATCH

Repro, health & welfare

### Why Alta COW WATCH?

When you choose Alta COW WATCH, you get access to the state-of-the-art cloud-based herd management platform – **Nedap Now.**

- ▲ Monitor and access data 24 / 7 / 365 from anywhere
- ▲ Attain seamless integration with herd management systems
- ▲ Access more historical data over longer periods of time
- ▲ Create customized work lists with relevant insights for each team member
- ▲ Allow selective access to data for team members and consultants
- ▲ Combine data in one spot for improved analysis and insights
- ▲ Group insights, such as heat stress, so you can adjust management practices and get the most out of your herd
- ▲ Improve heat detection and repro performance
- ▲ Quickly identify anestrus cows or potential pregnancy losses
- ▲ Find sick cows sooner so you can treat them before they become problems

Scan to learn more



**ASK ABOUT OUR TRADE IN OPTIONS!**

info@altagenetics.com

# THE TOP 10's Select the right bulls for you!

£ PLI	
AltaINSPIRE	855
AltaSUNDAY	836
AltaSNAZZY	830
AltaMAKEOVER	827
AltaSEVERUS	826
AltaSALMON	815
AltaSTRONGHOLD	813
AltaMULLER	801
AltaGOLDENSTORM	799
AltaXMAN	791

TPI	
AltaMAKEOVER	3301
AltaSNAZZY	3276
AltaINSPIRE	3268
AltaMONDO	3258
AltaSTRONGHOLD	3236
AltaAEROSPACE	3208
AltaSOLITAIRE	3208
AltaENGAGE	3206
AltaELTON	3203
AltaMCCOY	3202

NM\$	
AltaENGAGE	1367
AltaMAKEOVER	1324
AltaXMAN	1288
AltaSNAZZY	1258
AltaINSPIRE	1235
AltaMONDO	1229
AltaMASQUERADE	1217
AltaSTRONGHOLD	1217
AltaMAINSTREAM	1211
AltaSOLITAIRE	1208

DWP\$	
AltaSTRONGHOLD	1396
AltaXMAN	1384
AltaGOLDENSTORM	1340
AltaMAINSTREAM	1333
AltaYOUTETCHA	1258
AltaSOLITAIRE	1258
AltaWARWICK	1256
AltaMAKEOVER	1241
AltaMCCOY	1229
AltaYOUWIN	1210

FAT KGS	
AltaMAKEOVER	60.9
AltaSNAZZY	59.3
AltaAEROSPACE	54.3
AltaINSPIRE	52.9
AltaVANDYKE	51.8
AltaGARRIX	50.5
AltaELTON	50.4
AltaKEVLOW	50.2
AltaWARWICK	49.6
AltaXMAN	49.3

FAT PC	
AltaFIRST TIME	0.33
AltaAEROSPACE	0.31
AltaXMAN	0.28
AltaYOUWIN	0.27
AltaMCCOY	0.25
AltaSUNDAY	0.24
AltaPIZZAZZ	0.23
AltaSNAZZY	0.23
AltaKEVLOW	0.22
AltaMASQUERADE	0.22

PROTEIN KGS	
AltaMAKEOVER	39.9
AltaMACARIO	39.8
DUCKETT HEROIC	38.7
AltaSNAZZY	37.4
AltaINSPIRE	36.9
AltaSTRONGHOLD	36.5
AltaVANDYKE	35.0
AltaGARRIX	35.0
AltaSALMON	34.2
AltaZEMINI	33.6

PROTEIN PC	
AltaFIRST TIME	0.13
AltaGOLDENSTORM	0.12
AltaSUNDAY	0.12
AltaSTRONGHOLD	0.12
AltaDARUDE	0.11
AltaPIZZAZZ	0.11
AltaAEROSPACE	0.11
AltaTHUNDERBIRD	0.11
PEAK ZOWIE	0.10
AltaINSPIRE	0.10

MILK	
AltaMAKEOVER	1199
DUCKETT HEROIC	1167
AltaRUTILANT-RED	1065
AltaPOWERBUCK	1025
AltaFARRUKO	1000
AltaGETRICH	992
AltaMACARIO	987
AltaORIONSBELT	970
AltaWOODSIDE	968
AltaSNAZZY	942

SCC %	
AltaRUTILANT RED	-26
AltaSTRONGHOLD	-25
AltaVANDYKE	-24
AltaXMAN	-24
AltaAVITUS	-23
AltaSEVERUS	-23
AltaMULLER	-23
AltaZINGLER	-22
AltaGOLDENSTORM	-22
AltaFARRUKO	-22

LIFESPAN	
AltaORIONSBELT	168
AltaZINGLER	165
AltaPOWERBUCK	165
AltaDARUDE	165
AltaAVITUS	149
AltaMULLER	149
AltaSUNDAY	149
AltaINSPIRE	149
AltaPIZZAZZ	146
AltaEXQUISITE	143

DAUGHTER FERTILITY	
AltaZINGLER	15.2
AltaSOLITAIRE	14.1
AltaSEVERUS	13.9
AltaDARUDE	13.2
AltaMULLER	12.0
AltaTABLOID	10.8
AltaPOWERBUCK	10.4
AltaEXQUISITE	8.7
AltaORIONSBELT	8.5
AltaSUNDAY	8.4

TEAT LENGTH	
AltaINDIGO	1.00
RAE BAN RED	0.64
DUCKETT HEROIC	0.62
AltaAEROSPACE	0.56
AltaVANDYKE	0.43
AltaTHUNDERBIRD	0.32
AltaWARWICK	0.30
PEAK VANCE	0.30
AltaFIRST TIME	0.21
AltaPOWERBUCK	0.19

TYPE MERIT	
DUCKETT HEROIC	1.92
PEAK DELAP	1.87
AltaTHUNDERBIRD	1.77
AltaPOWERBUCK	1.70
AltaSNAZZY	1.66
AltaWOODSIDE	1.50
AltaGETRICH	1.48
AltaTABLOID	1.42
AltaSTRONGHOLD	1.40
AltaINSPIRE	1.33

MAMMARY	
AltaTABLOID	2.39
PEAK HAXL	2.17
PEAK DELAP	1.95
AltaORIONSBELT	1.83
AltaWOODSIDE	1.80
AltaPOWERBUCK	1.67
PEAK LUCRATIVE	1.58
AltaSNAZZY	1.56
AltaPIZZAZZ	1.50
DUCKETT HEROIC	1.48

LEGS & FEET	
DUCKETT HEROIC	1.61
AltaTHUNDERBIRD	1.43
AltaFIRST TIME	1.25
AltaMULLER	1.17
AltaRUTILANT RED	1.14
AltaZINGLER	1.01
AltaEXQUISTE	0.99
PEAK HAXL	0.96
AltaSALMON	0.94
AltaSNAZZY	0.93



# AltaAEROSPACE

65003252198055 | H08188

PEAK ALTAEROSPACE-ET  
AltaEXQUISITE X AltaJUMP CUT X LIONEL  
H0840M003252198055 | DOB 10/11/2022

aAa 234 | DMS 123,126 | EFI 12.7 %  
Kappa-Casein: BB Beta-Casein: A1A2  
Haplotype: HH6C | Genetic Codes: TC TD TE TL TP TR TV TY  
AHDB Dairy & Holstein UK 202412 - GENOMIC



PLI **+774** Rel 66%

## CONFORMATION

Type Merit	1.15	Mammary	1.00
Legs & Feet	0.64	Rel	53%

## PRODUCTION (0 UK Daughters in 0 UK Herds)

Milk	+659 Kgs	+73% Rel
Protein	+31.8 Kgs	+0.11%
Fat	+54.3 Kgs	+0.31%

## HEALTH & MANAGEMENT

Lifespan	82	Ease of Milk	+1.04
Fertility	-1.6	Temperament	+0.3
SCC	-20	Maintenance	-2
MAST	-1	Dairy Carcass	0.2
Calf Survival	+2.0	TB Advantage	4.8 43%
Lameness Advantage	+2.0	Gestation Length	-3 55%
Digital Dermatitis	+0.1	Feed Advantage	+120 45%
Healthy Cow	+125 56%	Enviro Cow	+3.9 68%

## CALVING TRAITS

Direct CE	-0.3	+63% Rel	Maternal CE	0.8	+50% Rel
-----------	------	----------	-------------	-----	----------

## CONFORMATION (0 UK Daughters in 0 UK Herds)

	-2	-1	0	1	2		
Stature						+0.40	Tall
Chest Width						-0.47	Narrow
Body Depth						-0.83	Shallow
Angularity						+1.41	Open Rib
Rump Angle						+0.23	Low Pins
Thurl Width						+0.67	Wide
R. Legs-S View						0.00	Straight
Foot Angle						+0.12	Steep
Locomotion						+0.60	Excellent
F. Udder Att.						+0.49	Tight
R. Udder Ht.						+1.66	Very high
Udder Cleft						+0.10	Strong
Udder Depth						+0.44	Above hock
F. Teat Place						-0.77	Outside
R. Teat Place						-0.55	Apart
Teat Length						+0.56	Long
Teat Sideview						+0.01	Apart

Alta UK abide by the ADHB & Holstein UK established code of Advertising. Bulls tested free for genetic recessives will not show these codes for formatting reasons. Prices are subject to change. Terms and conditions apply.



# AltaAVITUS

65003215425267 | H06789

PEAK ALTAAVITUS-ET  
FASTBALL X MARIUS X AltaROBSON  
H0840M003215425267 | DOB 2/27/2020

aAa 243 | DMS 561,126 | EFI 12.3 %  
Kappa-Casein: BE Beta-Casein: A1A2  
Genetic Codes: TC TD TE TL TP TR TV TY  
AHDB Dairy & Holstein UK 202412 - GENOMIC



PLI **+656** Rel 71%

## CONFORMATION

Type Merit	0.31	Mammary	0.18
Legs & Feet	0.74	Rel	56%

## PRODUCTION (0 UK Daughters in 0 UK Herds) (423 D | 29 H 100% US)

Milk	+879 Kgs	+83% Rel
Protein	+29.2 Kgs	0.00%
Fat	+27.0 Kgs	-0.09%

## HEALTH & MANAGEMENT

Lifespan	149	Ease of Milk	+1.01
Fertility	+4.2	Temperament	+1.0
SCC	-23	Maintenance	-6
MAST	-1	Dairy Carcass	1.4
Calf Survival	+1.7	TB Advantage	2.5 43%
Lameness Advantage	+1.6	Gestation Length	-3 99%
Digital Dermatitis	+0.2	Feed Advantage	+116 45%
Healthy Cow	+191 64%	Enviro Cow	+3.3 75%

## CALVING TRAITS

Direct CE	-0.3	+74% Rel	Maternal CE	0.2	+56% Rel
-----------	------	----------	-------------	-----	----------

## CONFORMATION (0 UK Daughters in 0 UK Herds) (32 D | 7 H 86%R US)

	-2	-1	0	1	2		
Stature						-1.13	Short
Chest Width						+0.56	Wide
Body Depth						-1.18	Shallow
Angularity						-0.81	Coarse
Rump Angle						-0.03	High Pins
Thurl Width						-0.03	Narrow
R. Legs-S View						-0.21	Straight
Foot Angle						+0.42	Steep
Locomotion						+0.74	Excellent
F. Udder Att.						-0.08	Loose
R. Udder Ht.						+0.19	Very high
Udder Cleft						-0.51	Broken
Udder Depth						+0.33	Above hock
F. Teat Place						-1.95	Outside
R. Teat Place						-1.61	Apart
Teat Length						-0.43	Short
Teat Sideview						+0.31	Apart

Alta UK abide by the ADHB & Holstein UK established code of Advertising. Bulls tested free for genetic recessives will not show these codes for formatting reasons. Prices are subject to change. Terms and conditions apply. Proud to use independent data powered by AHDB Dairy.



**PLI** **+657** Rel 67%

# AltaBRIMSTONE

65003235932779 | HO8189

PEAK ALTABRIMSTONE-ET  
AltaWHEELHOUSE X PURSUIT X SAMURI  
HO840M003235932779 | DOB 7/6/2021

aAa 342 | DMS 234,246 | EFI 11.7 %  
Kappa-Casein: AB Beta-Casein: A2A2  
Genetic Codes: TC TD TE TL TP TR TV TY  
AHDB Dairy & Holstein UK 202412 - GENOMIC



## CONFORMATION

Type Merit	1.05	Mammary	0.82
Legs & Feet	0.53	Rel	56%

## PRODUCTION (0 UK Daughters in 0 UK Herds)

Milk	+780 Kgs	+74% Rel
Protein	+32.5 Kgs	+0.07%
Fat	+43.9 Kgs	+0.14%

## HEALTH & MANAGEMENT

Lifespan	79	Ease of Milk	+1.92
Fertility	+5.1	Temperament	+0.7
SCC	-4	Maintenance	15
MAST	0	Dairy Carcass	1.0
Calf Survival	+0.2	TB Advantage	4.1 50%
Lameness Advantage	+0.3	Gestation Length	-1 55%
Digital Dermatitis		Feed Advantage	+23 45%
Healthy Cow	+109 58%	Enviro Cow	+3.1 70%

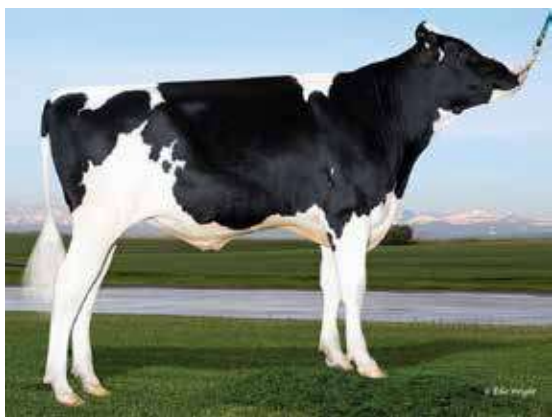
## CALVING TRAITS

Direct CE	0.0	+77% Rel	Maternal CE	1.5	+53% Rel
-----------	-----	----------	-------------	-----	----------

## CONFORMATION (0 UK Daughters in 0 UK Herds)

	-2	-1	0	1	2		
Stature						+1.02	Tall
Chest Width						+1.43	Wide
Body Depth						+1.16	Deep
Angularity						+1.56	Open Rib
Rump Angle						+0.38	Low Pins
Thurl Width						+2.33	Wide
R. Legs-S View						+1.16	Sickled
Foot Angle						-0.82	Low
Locomotion						+0.78	Excellent
F. Udder Att.						+0.10	Tight
R. Udder Ht.						+0.58	Very high
Udder Cleft						-0.06	Broken
Udder Depth						+0.17	Above hock
F. Teat Place						+0.58	Close
R. Teat Place						+0.75	Close
Teat Length						-0.26	Short
Teat Sideview						+1.33	Apart

Alta UK abide by the ADHB & Holstein UK established code of Advertising. Bulls tested free for genetic recessives will not show these codes for formatting reasons. Prices are subject to change. Terms and conditions apply.



**PLI** **+769** Rel 66%

# AltaDARUDE

65003243355665 | HO8068

PEAK ALTADARUDE-ET  
HIGH ENERGY X NO EXCUSE X REDROCK  
HO840M003243355665 | DOB 6/2/2022

aAa 243 | DMS 234,246 | EFI 12.6 %  
Kappa-Casein: BB Beta-Casein: A1A2  
Genetic Codes: TC TD TE TL TP TR TV TY  
AHDB Dairy & Holstein UK 202412 - GENOMIC



## CONFORMATION

Type Merit	0.32	Mammary	1.36
Legs & Feet	-0.05	Rel	53%

## PRODUCTION (0 UK Daughters in 0 UK Herds)

Milk	+521 Kgs	+73% Rel
Protein	+27.2 Kgs	+0.11%
Fat	+34.5 Kgs	+0.15%

## HEALTH & MANAGEMENT

Lifespan	165	Ease of Milk	+1.62
Fertility	+13.2	Temperament	+0.7
SCC	-9	Maintenance	-2
MAST	0	Dairy Carcass	1.0
Calf Survival	+3.1	TB Advantage	2.8 44%
Lameness Advantage	+3.6	Gestation Length	-2 48%
Digital Dermatitis	+0.8	Feed Advantage	+86 45%
Healthy Cow	+271 56%	Enviro Cow	+3.6 69%

## CALVING TRAITS

Direct CE	-0.3	+63% Rel	Maternal CE	0.9	+53% Rel
-----------	------	----------	-------------	-----	----------

## CONFORMATION (0 UK Daughters in 0 UK Herds)

	-2	-1	0	1	2		
Stature						+0.52	Tall
Chest Width						-0.69	Narrow
Body Depth						-0.62	Shallow
Angularity						+1.07	Open Rib
Rump Angle						+1.86	Low Pins
Thurl Width						+1.23	Wide
R. Legs-S View						+1.05	Sickled
Foot Angle						-1.30	Low
Locomotion						-0.13	Poor
F. Udder Att.						+1.37	Tight
R. Udder Ht.						+1.24	Very high
Udder Cleft						+0.38	Strong
Udder Depth						+1.10	Above hock
F. Teat Place						+1.23	Close
R. Teat Place						+1.37	Close
Teat Length						-0.17	Short
Teat Sideview						+0.06	Apart

Alta UK abide by the ADHB & Holstein UK established code of Advertising. Bulls tested free for genetic recessives will not show these codes for formatting reasons. Prices are subject to change. Terms and conditions apply. Proud to use independent data powered by AHDB Dairy.



# PEAK DELAP-ET

FASTBALL X POSITIVE X MODESTY

HO840M003215425311

DOB 03/17/2020

Kappa-Casein AA | Beta-Casein A1A2

DMS 561,456 | EFI 12.3%

Haplotypes HH1F HH2F HH3F HH4F HH5F HCDF HH6F HMW0

Genetic Codes TC TD TE TL TP TR TV TY

Current Proof GBR-202412 | Genomic Young Sire

AHDB Dairy & Holstein UK 12/2024

## CONFORMATION based on 0 dtrs/0 hrs (56% Rel)

Type Merit					
Type Merit					+1.87
Mammary					+1.95
Legs & Feet					+0.92
	-2	-1	0	1	2
Stature					+0.12 Tall
Chest Width					+0.06 Wide
Body Depth					-0.53 Shallow
Angularity					+0.70 Open Rib
Rump Angle					+0.39 Low Pins
Thurl Width					+0.75 Wide
R.Legs S View					-0.16 Straight
Foot Angle					+0.38 Steep
Locomotion					+0.68 Excellent
F.Udder Att.					+1.35 Tight
R.Udder Ht					+1.66 Very High
Udder Cleft					+1.14 Strong
Udder Depth					+1.56 Above Hock
F.Teal Place					+0.10 Close
R.Teal Place					+0.53 Close
Teat Length					-0.34 Short
Teat Sideview					+0.28 Apart

**PLI 528** Rel 67%

## PRODUCTION

Milk	+651 kgs	73 % Rel
Protein	+19.6 kgs	-0.02%
Fat	+34.2 kgs	+0.09%

## HEALTH & MANAGEMENT

Lifespan	110	Ease of Milk	1.41
Fertility	1.8	Temperament	0.31
SCC	-8	Maintenance	0
MAST	1	Dairy Carcass	0.8
Calf Survival	+0.8	Digital Dermatitis	0.3
Lameness Advantage	+2.0	Gestation Length	-1 51% Rel
TB Advantage	1.0 44% Rel	Feed Advantage	+84 45% Rel
Healthy Cow	+146 57% Rel	Enviro Cow	+2.7 69% Rel

## CALVING TRAITS

Direct CE	0.3 74% Rel	Maternal CE	0.9 52% Rel
-----------	-------------	-------------	-------------



**PLI +721** Rel 66%

# AltaELTON

**NEW**

65003264522700

PEAK ALTAELTON-ET

MIRRORIMAGE X GAMEDAY X AltaPLINKO

HO840M003264522700 | DOB 7/5/2023

aAa 342 | DMS 246,126 | EFI 12.5 %

Kappa-Casein: AE Beta-Casein: A1A1

Genetic Codes: TC TD TE TL TP TR TV TY

AHDB Dairy & Holstein UK 202412 - GENOMIC



## CONFORMATION

Type Merit	0.98	Mammary	0.65
Legs & Feet	0.36	Rel	53%

## PRODUCTION (0 UK Daughters in 0 UK Herds)

Milk	+915 Kgs	+73% Rel
Protein	+32.7 Kgs	+0.02%
Fat	+50.4 Kgs	+0.15%

## HEALTH & MANAGEMENT

Lifespan	61	Ease of Milk	+0.70
Fertility	+3.6	Temperament	+0.4
SCC	-14	Maintenance	-4
MAST	0	Dairy Carcass	0.4
Calf Survival	-0.1	TB Advantage	1.3 43%
Lameness Advantage	+3.2	Gestation Length	-1 49%
Digital Dermatitis	+0.3	Feed Advantage	+139 43%
Healthy Cow	+114 56%	Enviro Cow	+3.6 69%

## CALVING TRAITS

Direct CE	-0.4 +63% Rel	Maternal CE	0.6 +52% Rel
-----------	---------------	-------------	--------------

## CONFORMATION (0 UK Daughters in 0 UK Herds)

	-2	-1	0	1	2	
Stature						+0.43 Tall
Chest Width						-0.57 Narrow
Body Depth						-0.21 Shallow
Angularity						+2.12 Open Rib
Rump Angle						-0.28 High Pins
Thurl Width						+1.18 Wide
R. Legs-S View						+0.85 Sickled
Foot Angle						-0.45 Low
Locomotion						+0.27 Excellent
F. Udder Att.						+0.31 Tight
R. Udder Ht.						+0.96 Very high
Udder Cleft						+0.33 Strong
Udder Depth						-0.24 Below Hock
F. Teal Place						+0.37 Close
R. Teal Place						+0.62 Close
Teat Length						-0.32 Short
Teat Sideview						+0.68 Apart

Alta UK abide by the ADHB & Holstein UK established code of Advertising. Bulls tested free for genetic recessives will not show these codes for formatting reasons. Prices are subject to change. Terms and conditions apply. Proud to use independent data powered by AHDB Dairy.



PLI **+690** Rel 68%

# AltaEXQUISITE

65003224955987 | H07367

PEAK ALTAEXQUISITE-ET  
AltaZAZZLE X PURSUIT X AltaROBSON  
H0840M003224955987 | DOB 1/1/2021

aAa 234 | DMS 234,345 | EFI 12.5 %  
Kappa-Casein: AB Beta-Casein: A1A2  
Haplotype: HH6C | Genetic Codes: TC TD TE TL TP TR TV TY  
AHDB Dairy & Holstein UK 202412 - GENOMIC



## CONFORMATION

Type Merit	0.55	Mammary	0.72
Legs & Feet	0.99	Rel	58%

## PRODUCTION (0 UK Daughters in 0 UK Herds)

Milk	+519 Kgs	+74% Rel
Protein	+25.1 Kgs	+0.09%
Fat	+35.5 Kgs	+0.16%

## HEALTH & MANAGEMENT

Lifespan	143	Ease of Milk	+2.02
Fertility	+8.7	Temperament	+0.3
SCC	-11	Maintenance	-8
MAST	0	Dairy Carcass	0.2
Calf Survival	+1.9	TB Advantage	5.2 51%
Lameness Advantage	+1.7	Gestation Length	-5 98%
Digital Dermatitis	+0.2	Feed Advantage	+109 46%
Healthy Cow	+211 60%	Enviro Cow	+3.5 71%

## CALVING TRAITS

Direct CE	-0.1	+78% Rel	Maternal CE	1.1	+55% Rel
-----------	------	----------	-------------	-----	----------

CONFORMATION (0 UK Daughters in 0 UK Herds)

	-2	-1	0	1	2	
Stature						+0.10 Tall
Chest Width						-1.22 Narrow
Body Depth						-1.57 Shallow
Angularity						+0.69 Open Rib
Rump Angle						+1.36 Low Pins
Thurl Width						+0.05 Wide
R. Legs-S View						+0.10 Sickled
Foot Angle						+0.16 Steep
Locomotion						+1.20 Excellent
F. Udder Att.						+0.40 Tight
R. Udder Ht.						+0.71 Very high
Udder Cleft						-0.36 Broken
Udder Depth						+0.62 Above hock
F. Teat Place						-0.29 Outside
R. Teat Place						-0.88 Apart
Teat Length						-0.25 Short
Teat Sideview						-0.27 Close

Alta UK abide by the ADHB & Holstein UK established code of Advertising. Bulls tested free for genetic recessives will not show these codes for formatting reasons. Prices are subject to change. Terms and conditions apply.



PLI **+748** Rel 66%

# AltaFARRUKO

65003247835590 | H08185

PEAK ALTAFARRUKO-ET  
ZAPPY X AltaMAGNIFIQUE X TORRO  
H0840M003247835590 | DOB 9/14/2022

aAa 342 | DMS 345,456 | EFI 11.9 %  
Kappa-Casein: AB Beta-Casein: A1A2  
Haplotype: HMW1 | Genetic Codes: MW TC TD TL TP TR TV TY  
AHDB Dairy & Holstein UK 202412 - GENOMIC



## CONFORMATION

Type Merit	0.11	Mammary	1.06
Legs & Feet	-0.29	Rel	53%

## PRODUCTION (0 UK Daughters in 0 UK Herds)

Milk	+1000 Kgs	+72% Rel
Protein	+33.2 Kgs	0.00%
Fat	+36.5 Kgs	-0.04%

## HEALTH & MANAGEMENT

Lifespan	137	Ease of Milk	+0.40
Fertility	+7.7	Temperament	-0.1
SCC	-22	Maintenance	-4
MAST	-2	Dairy Carcass	1.6
Calf Survival	+0.4	TB Advantage	4.6 44%
Lameness Advantage	+1.9	Gestation Length	-3 49%
Digital Dermatitis	+0.4	Feed Advantage	+113 45%
Healthy Cow	+211 56%	Enviro Cow	+3.6 68%

## CALVING TRAITS

Direct CE	0.4	+63% Rel	Maternal CE	1.1	+52% Rel
-----------	-----	----------	-------------	-----	----------

CONFORMATION (0 UK Daughters in 0 UK Herds)

	-2	-1	0	1	2	
Stature						-0.11 Short
Chest Width						-0.40 Narrow
Body Depth						-1.01 Shallow
Angularity						-0.04 Coarse
Rump Angle						+1.17 Low Pins
Thurl Width						+0.28 Wide
R. Legs-S View						+1.14 Sickled
Foot Angle						-0.56 Low
Locomotion						-0.11 Poor
F. Udder Att.						+1.43 Tight
R. Udder Ht.						+0.38 Very high
Udder Cleft						+0.17 Strong
Udder Depth						+0.83 Above hock
F. Teat Place						+1.17 Close
R. Teat Place						+0.89 Close
Teat Length						-0.87 Short
Teat Sideview						-0.85 Close

Alta UK abide by the ADHB & Holstein UK established code of Advertising. Bulls tested free for genetic recessives will not show these codes for formatting reasons. Prices are subject to change. Terms and conditions apply. Proud to use independent data powered by AHDB Dairy.



**PLI** **+730** Rel 68%

# AltaFIRSTTIME

65003225323219 | HO7401

FB ALTAFIRSTTIME-ET  
AltaZAZZLE X ACURA X ROLAN  
HO840M003225323219 | DOB 7/16/2021

aAa 213 | DMS 246,234 | EFI 12.4 %  
Kappa-Casein: AB Beta-Casein: A1A2  
Haplotype: HH6C | Genetic Codes: TC TD TE TL TP TR TV TY  
AHDB Dairy & Holstein UK 202412 - GENOMIC



## CONFORMATION

Type Merit	0.73	Mammary	0.80
Legs & Feet	1.25	Rel	57%

## PRODUCTION (0 UK Daughters in 0 UK Herds)

Milk	+378 Kgs	+74% Rel
Protein	+23.6 Kgs	+0.13%
Fat	+44.0 Kgs	+0.33%

## HEALTH & MANAGEMENT

Lifespan	116	Ease of Milk	+0.55
Fertility	+7.1	Temperament	+0.1
SCC	-11	Maintenance	-14
MAST	0	Dairy Carcass	0.0
Calf Survival	+1.2	TB Advantage	3.5 50%
Lameness Advantage	+2.7	Gestation Length	-1 99%
Digital Dermatitis	+0.4	Feed Advantage	+147 46%
Healthy Cow	+187 59%	Enviro Cow	+3.7 70%

## CALVING TRAITS

Direct CE	-0.5	+68% Rel	Maternal CE	0.9	+54% Rel
-----------	------	----------	-------------	-----	----------

## CONFORMATION (0 UK Daughters in 0 UK Herds)

	-2	-1	0	1	2		
Stature						-0.39	Short
Chest Width						-1.50	Narrow
Body Depth						-1.21	Shallow
Angularity						+0.33	Open Rib
Rump Angle						+0.91	Low Pins
Thurl Width						-0.36	Narrow
R. Legs-S View						-0.13	Straight
Foot Angle						+0.38	Steep
Locomotion						+1.42	Excellent
F. Udder Att.						+0.99	Tight
R. Udder Ht.						+0.81	Very high
Udder Cleft						+0.19	Strong
Udder Depth						+0.49	Above hock
F. Teat Place						+0.47	Close
R. Teat Place						+0.57	Close
Teat Length						+0.21	Long
Teat Sideview						-1.27	Close

Alta UK abide by the ADHB & Holstein UK established code of Advertising. Bulls tested free for genetic recessives will not show these codes for formatting reasons. Prices are subject to change. Terms and conditions apply.



**PLI** **+728** Rel 66%

# AltaGARRIX

65003247843748 | HO7795

PEAK ALTAGARRIX-ET  
AltaKEVLOW X AltaZAZZLE X HUEY  
HO840M003247843748 | DOB 6/7/2022

aAa 234 | DMS 123,126 | EFI 13.1 %  
Kappa-Casein: AB Beta-Casein: A1A2  
Haplotype: HH6C | Genetic Codes: TC TD TE TL TP TR TV TY  
AHDB Dairy & Holstein UK 202412 - GENOMIC



## CONFORMATION

Type Merit	-0.22	Mammary	0.14
Legs & Feet	-0.14	Rel	55%

## PRODUCTION (0 UK Daughters in 0 UK Herds)

Milk	+777 Kgs	+72% Rel
Protein	+35.0 Kgs	+0.10%
Fat	+50.5 Kgs	+0.21%

## HEALTH & MANAGEMENT

Lifespan	61	Ease of Milk	+0.01
Fertility	+2.1	Temperament	-0.4
SCC	-8	Maintenance	-7
MAST	0	Dairy Carcass	0.8
Calf Survival	-1.4	TB Advantage	3.8 44%
Lameness Advantage	+2.1	Gestation Length	-2 55%
Digital Dermatitis	+0.3	Feed Advantage	+136 45%
Healthy Cow	+61 56%	Enviro Cow	+3.8 68%

## CALVING TRAITS

Direct CE	0.1	+66% Rel	Maternal CE	1.0	+50% Rel
-----------	-----	----------	-------------	-----	----------

Alta UK abide by the ADHB & Holstein UK established code of Advertising. Bulls tested free for genetic recessives will not show these codes for formatting reasons. Prices are subject to change. Terms and conditions apply. Proud to use independent data powered by AHDB Dairy.





PLI **+611** Rel 67%

# AltaGETRICH

65003224956642 | H07582

PEAK ALTAGETRICH-ET  
AltaWHEELHOUSE X PURSUIT X SAMURI  
H0840M003224956642 | DOB 6/23/2021

aAa 423 | DMS 234,345 | EFI 12.0 %  
Kappa-Casein: AB Beta-Casein: A2A2  
Haplotype: HMW1 | Genetic Codes: MW TC TD TL TP TR TV TY  
AHDB Dairy & Holstein UK 202412 - GENOMIC



## CONFORMATION

Type Merit	1.48	Mammary	1.28
Legs & Feet	0.58	Rel	56%

## PRODUCTION (0 UK Daughters in 0 UK Herds)

Milk	+992 Kgs	+74% Rel
Protein	+31.3 Kgs	-0.02%
Fat	+40.6 Kgs	+0.01%

## HEALTH & MANAGEMENT

Lifespan	79	Ease of Milk	+1.31
Fertility	+4.1	Temperament	+0.7
SCC	-10	Maintenance	12
MAST	0	Dairy Carcass	1.3
Calf Survival	0.0	TB Advantage	2.9 50%
Lameness Advantage	+0.9	Gestation Length	-2 99%
Digital Dermatitis	+0.1	Feed Advantage	+44 45%
Healthy Cow	+113 58%	Enviro Cow	+2.9 70%

## CALVING TRAITS

Direct CE	-1.0	+73% Rel	Maternal CE	1.3	+53% Rel
-----------	------	----------	-------------	-----	----------

CONFORMATION (0 UK Daughters in 0 UK Herds)

	-2	-1	0	1	2		
Stature						+0.60	Tall
Chest Width						+1.49	Wide
Body Depth						+1.48	Deep
Angularity						+1.69	Open Rib
Rump Angle						+0.94	Low Pins
Thurl Width						+3.01	Wide
R. Legs-S View						+1.52	Sickled
Foot Angle						-0.72	Low
Locomotion						+0.78	Excellent
F. Udder Att.						+0.10	Tight
R. Udder Ht.						+0.89	Very high
Udder Cleft						+1.34	Strong
Udder Depth						-0.25	Below Hock
F. Teat Place						+1.67	Close
R. Teat Place						+2.50	Close
Teat Length						-0.54	Short
Teat Sideview						+2.31	Apart

Alta UK abide by the ADHB & Holstein UK established code of Advertising. Bulls tested free for genetic recessives will not show these codes for formatting reasons. Prices are subject to change. Terms and conditions apply.



PLI **+799** Rel 66%

# AltaGOLDENSTORM

65003252197960 | H07930

PEAK ALTAGOLDENSTORM-ET  
AltaEXQUISITE X FORTNITE X MILKTIME  
H0840M003252197960 | DOB 9/22/2022

aAa 423 | DMS 456,345 | EFI 12.1 %  
Kappa-Casein: BE Beta-Casein: A1A1  
Genetic Codes: TC TD TE TL TP TR TV TY  
AHDB Dairy & Holstein UK 202412 - GENOMIC



## CONFORMATION

Type Merit	0.85	Mammary	0.70
Legs & Feet	0.77	Rel	53%

## PRODUCTION (0 UK Daughters in 0 UK Herds)

Milk	+636 Kgs	+73% Rel
Protein	+31.8 Kgs	+0.12%
Fat	+40.1 Kgs	+0.16%

## HEALTH & MANAGEMENT

Lifespan	137	Ease of Milk	+0.80
Fertility	+4.4	Temperament	+0.1
SCC	-22	Maintenance	1
MAST	-2	Dairy Carcass	0.7
Calf Survival	+2.1	TB Advantage	3.2 43%
Lameness Advantage	+1.3	Gestation Length	-2 54%
Digital Dermatitis	+0.2	Feed Advantage	+123 45%
Healthy Cow	+204 56%	Enviro Cow	+4.0 69%

## CALVING TRAITS

Direct CE	-0.3	+63% Rel	Maternal CE	0.8	+50% Rel
-----------	------	----------	-------------	-----	----------

CONFORMATION (0 UK Daughters in 0 UK Herds)

	-2	-1	0	1	2		
Stature						+0.08	Tall
Chest Width						+0.17	Wide
Body Depth						-0.52	Shallow
Angularity						+0.18	Open Rib
Rump Angle						+0.27	Low Pins
Thurl Width						+0.23	Wide
R. Legs-S View						-0.05	Straight
Foot Angle						+0.29	Steep
Locomotion						+0.56	Excellent
F. Udder Att.						+0.42	Tight
R. Udder Ht.						+0.62	Very high
Udder Cleft						-0.24	Broken
Udder Depth						+0.36	Above hock
F. Teat Place						+0.74	Close
R. Teat Place						-0.25	Apart
Teat Length						-1.09	Short
Teat Sideview						-0.69	Close

Alta UK abide by the ADHB & Holstein UK established code of Advertising. Bulls tested free for genetic recessives will not show these codes for formatting reasons. Prices are subject to change. Terms and conditions apply. Proud to use independent data powered by AHDB Dairy.



# DUCKETT HEROIC-ET

ESQUIRE X PERFECT X DOC

**NEW**

HO840M003260843013

DOB 11/09/2022

Kappa-Casein AB | Beta-Casein A2A2

DMS 234,345 | EFI 11.4%

Haplotypes HH1F HH2F HH3F HH4F HH5F HCDF HH6F HMW0

Genetic Codes TC TD TE TL TP TR TV TY

Current Proof GBR-202412 | Genomic Young Sire

AHDB Dairy & Holstein UK 12/2024

## CONFORMATION based on 0 dtrs/0 hrs (53% Rel)

Type Merit					
Type Merit					+1.92
Mammary					+1.48
Legs & Feet					+1.61
	-2	-1	0	1	2
Stature					+0.16 Tall
Chest Width					+0.64 Wide
Body Depth					+0.49 Deep
Angularity					+1.21 Open Rib
Rump Angle					-1.28 High Pins
Thurl Width					+1.56 Wide
R.Legs S View					+0.04 Sickled
Foot Angle					+0.09 Steep
Locomotion					+1.88 Excellent
F.Udder Att.					+0.90 Tight
R.Udder Ht					+1.15 Very High
Udder Cleft					+0.94 Strong
Udder Depth					+0.31 Above Hock
F.Teat Place					+0.75 Close
R.Teat Place					+1.09 Close
Teat Length					+0.62 Long
Teat Sideview					+0.82 Apart

PLI

685 Rel 66%

## PRODUCTION

Milk	+1167 kgs	73% Rel
Protein	+38.7 kgs	+0.00%
Fat	+36.9 kgs	-0.11%

## HEALTH & MANAGEMENT

Lifespan	73	Ease of Milk	1.02
Fertility	+3.2	Temperament	0.62
SCC	-6	Maintenance	3
MAST	0	Dairy Carcass	0.3
Calf Survival	+1.7	Digital Dermatitis	0.4
Lameness Advantage	+1.1	Gestation Length	-1.0 55% Rel
TB Advantage	1.9 42% Rel	Feed Advantage	+48 45% Rel
Healthy Cow	+137 55% Rel	Enviro Cow	+3.1 69% Rel

## CALVING TRAITS

Direct CE	-0.5 63% Rel	Maternal CE	1.5 50% Rel
-----------	--------------	-------------	-------------

Alta UK abide by the ADHB & Holstein UK established code of Advertising Prices are subject to change. Terms and conditions apply.  
Proud to use independent data powered by AHDB Dairy.

Distributed in the UK by Alta Genetics



# AltaINSPIRE

65003263337318 | HO8077

PEAK CH ALTAINSPIRE-ET  
POWERSTAR X AltaMAGNIFIQUE X AltaZAZZLE  
HO840M003263337318 | DOB 2/12/2023

aAa 342 | DMS 456,345 | EFI 12.1 %

Kappa-Casein: BB Beta-Casein: A2A2  
Haplotype: HH5C | Genetic Codes: TC TD TE TL TP TR TV TY  
AHDB Dairy & Holstein UK 202412 - GENOMIC



PLI **+855** Rel 66%

## CONFORMATION

Type Merit	1.33	Mammary	0.84
Legs & Feet	0.78	Rel	53%

## PRODUCTION (0 UK Daughters in 0 UK Herds)

Milk	+838 Kgs	+73% Rel
Protein	+36.9 Kgs	+0.10%
Fat	+52.9 Kgs	+0.21%

## HEALTH & MANAGEMENT

Lifespan	149	Ease of Milk	+0.28
Fertility	+4.3	Temperament	+0.3
SCC	-11	Maintenance	12
MAST	-1	Dairy Carcass	1.0
Calf Survival	+1.4	TB Advantage	4.5 44%
Lameness Advantage	+0.3	Gestation Length	-2 49%
Digital Dermatitis	-0.1	Feed Advantage	+87 43%
Healthy Cow	+173 56%	Enviro Cow	+4.3 69%

## CALVING TRAITS

Direct CE	0.3	+63% Rel	Maternal CE	1.3	+52% Rel
-----------	-----	----------	-------------	-----	----------

CONFORMATION (0 UK Daughters in 0 UK Herds)

	-2	-1	0	1	2	
Stature						+0.36 Tall
Chest Width						+1.52 Wide
Body Depth						+1.23 Deep
Angularity						+0.68 Open Rib
Rump Angle						-0.02 High Pins
Thurl Width						+0.22 Wide
R. Legs-S View						-0.17 Straight
Foot Angle						+0.40 Steep
Locomotion						+0.66 Excellent
F. Udder Att.						+1.19 Tight
R. Udder Ht.						+0.57 Very high
Udder Cleft						-0.68 Broken
Udder Depth						-0.07 Below Hock
F. Teat Place						+1.05 Close
R. Teat Place						+0.31 Close
Teat Length						-0.10 Short
Teat Sideview						+0.13 Apart

Alta UK abide by the ADHB & Holstein UK established code of Advertising. Bulls tested free for genetic recessives will not show these codes for formatting reasons. Prices are subject to change. Terms and conditions apply.



# PEAK LUCRATIVE-ET



MARLON X AltaMAGNIFIQUE X AltaZAZZLE

HO840M003269404584

DOB 04/18/2023

Kappa-Casein AA | Beta-Casein A1A2

DMS 135,561 | EFI 11.1%

Haplotypes HH1F HH2F HH3F HH4F HH5F HCDF HH6F HMWO

Genetic Codes TC TD TE TL TP TV TY

Current Proof GBR-202412 | Genomic Young Sire

AHDB Dairy & Holstein UK 12/2024

CONFORMATION based on 0 dtrs/0 hnds (53% Rel)

	-2	-1	0	1	2	
Type Merit						+0.94
Mammary						+1.58
Legs & Feet						+0.36
Stature						+0.78 Tall
Chest Width						-0.19 Shallow
Body Depth						-0.35 Shallow
Angularity						+1.26 Open Rib
Rump Angle						+1.13 Low Pins
Thurl Width						+1.04 Wide
R.Legs S View						+1.02 Sickled
Foot Angle						-0.67 Low
Locomotion						+0.25 Excellent
F.Udder Att.						+1.69 Tight
R.Udder Ht						+1.39 Very High
Udder Cleft						-0.25 Broken
Udder Depth						+0.86 Above Hock
F.Teat Place						+1.10 Close
R.Teat Place						+0.70 Close
Teat Length						-0.02 Short
Teat Sideview						+0.53 Apart

PLI **720** Rel 66%

## PRODUCTION

Milk	+835 kgs	73 % Rel
Protein	+31.8 kgs	+0.04%
Fat	+46.3 kgs	+0.14%

## HEALTH & MANAGEMENT

Lifespan	98	Ease of Milk	1.34	
Fertility	+1.5	Temperament	0.51	
SCC	-6	Maintenance	3	
MAST	-1	Dairy Carcass	1.4	
Calf Survival	+2.2	Digital Dermatitis	0.2	
Lameness Advantage	+1.4	Gestation Length	-1 49% Rel	
TB Advantage	3.9	44% Rel	Feed Advantage	+117 43% Rel
Healthy Cow	+135	56% Rel	Enviro Cow	+3.7 69% Rel

## CALVING TRAITS

Direct CE	0.1	63% Rel	Maternal CE	0.9	52% Rel
-----------	-----	---------	-------------	-----	---------

Alta UK abide by the ADHB & Holstein UK established code of Advertising. Proud to use independent data powered by AHDB Dairy.

Prices are subject to change. Terms and conditions apply.



**PLI** **+706** Rel 67%

# AltaMAINSTREAM

65003236692372 | H07403

PEAK ALTAMAINSTREAM-ET  
AltaWHEELHOUSE X RIVETING X AltaTOPSHOT  
H0840M003236692372 | DOB 5/27/2021

aAa 432 | DMS 234,123 | EFI 12.0 %  
Kappa-Casein: AB Beta-Casein: A2A2  
Genetic Codes: TC TD TE TL TP TR TV TY  
AHDB Dairy & Holstein UK 202412 - GENOMIC



## CONFORMATION

Type Merit	0.54	Mammary	0.27
Legs & Feet	0.44	Rel	56%

## PRODUCTION (0 UK Daughters in 0 UK Herds)

Milk	+909 Kgs	+73% Rel
Protein	+33.5 Kgs	+0.04%
Fat	+46.5 Kgs	+0.11%

## HEALTH & MANAGEMENT

Lifespan	88	Ease of Milk	+0.04
Fertility	+0.4	Temperament	+0.0
SCC	-12	Maintenance	0
MAST	0	Dairy Carcass	1.5
Calf Survival	+1.4	TB Advantage	1.8 49%
Lameness Advantage	+2.4	Gestation Length	+1 99%
Digital Dermatitis	+0.4	Feed Advantage	+124 45%
Healthy Cow	+103 60%	Enviro Cow	+3.7 69%

## CALVING TRAITS

Direct CE	-0.9	+72% Rel	Maternal CE	1.1	+52% Rel
-----------	------	----------	-------------	-----	----------

## CONFORMATION (0 UK Daughters in 0 UK Herds)

	-2	-1	0	1	2		
Stature						0.00	Short
Chest Width				0.39		+0.39	Wide
Body Depth				-0.04		-0.04	Shallow
Angularity				0.95		+0.95	Open Rib
Rump Angle				0.95		+0.95	Low Pins
Thurl Width				0.97		+0.97	Wide
R. Legs-S View				1.66		+1.66	Sickled
Foot Angle				-1.33		-1.33	Low
Locomotion				0.84		+0.84	Excellent
F. Udder Att.				-0.87		-0.87	Loose
R. Udder Ht.				0.63		+0.63	Very high
Udder Cleft				0.63		+0.63	Strong
Udder Depth				-0.91		-0.91	Below Hock
F. Teat Place				1.15		+1.15	Close
R. Teat Place				2.10		+2.10	Close
Teat Length				-1.34		-1.34	Short
Teat Sideview				2.16		+2.16	Apart

Alta UK abide by the ADHB & Holstein UK established code of Advertising. Bulls tested free for genetic recessives will not show these codes for formatting reasons. Prices are subject to change. Terms and conditions apply.



**PLI** **+734** Rel 66%

# AltaMACARIO

65003213324023 | H07823

PLAIN-KNOLL ALTAMACARIO-ET  
AltaZEMINI X ACURA X RESOLVE  
H0840M003213324023 | DOB 8/20/2022

aAa 324 | DMS 456,561 | EFI 11.8 %  
Kappa-Casein: AB Beta-Casein: A2A2  
Genetic Codes: TC TD TE TL TP TR TV TY  
AHDB Dairy & Holstein UK 202412 - GENOMIC



## CONFORMATION

Type Merit	0.76	Mammary	0.68
Legs & Feet	0.38	Rel	53%

## PRODUCTION (0 UK Daughters in 0 UK Herds)

Milk	+987 Kgs	+73% Rel
Protein	+38.8 Kgs	+0.07%
Fat	+41.5 Kgs	+0.02%

## HEALTH & MANAGEMENT

Lifespan	98	Ease of Milk	+0.96
Fertility	+0.5	Temperament	+0.8
SCC	-9	Maintenance	4
MAST	0	Dairy Carcass	1.3
Calf Survival	+1.0	TB Advantage	2.9 43%
Lameness Advantage	+0.7	Gestation Length	-2 54%
Digital Dermatitis	+0.1	Feed Advantage	+134 45%
Healthy Cow	+94 56%	Enviro Cow	+3.9 69%

## CALVING TRAITS

Direct CE	-0.2	+63% Rel	Maternal CE	0.8	+52% Rel
-----------	------	----------	-------------	-----	----------

## CONFORMATION (0 UK Daughters in 0 UK Herds)

	-2	-1	0	1	2		
Stature				0.41		+0.41	Tall
Chest Width				0.40		+0.40	Wide
Body Depth				0.04		+0.04	Deep
Angularity				1.01		+1.01	Open Rib
Rump Angle				-0.46		-0.46	High Pins
Thurl Width				1.43		+1.43	Wide
R. Legs-S View				-0.44		-0.44	Straight
Foot Angle				0.57		+0.57	Steep
Locomotion				0.27		+0.27	Excellent
F. Udder Att.				0.74		+0.74	Tight
R. Udder Ht.				0.02		+0.02	Very high
Udder Cleft				-0.54		-0.54	Broken
Udder Depth				0.24		+0.24	Above hock
F. Teat Place				0.45		+0.45	Close
R. Teat Place				-0.48		-0.48	Apart
Teat Length				-0.50		-0.50	Short
Teat Sideview				-0.07		-0.07	Close

Alta UK abide by the ADHB & Holstein UK established code of Advertising. Bulls tested free for genetic recessives will not show these codes for formatting reasons. Prices are subject to change. Terms and conditions apply. Proud to use independent data powered by AHDB Dairy.



# AltaMAKEOVER

65003269404786

PEAK ALTAMAKEOVER-ET  
MIRRORIMAGE X UPSIDE X AltaZAZZLE  
HO840M003269404786 | DOB 5/31/2023

aAa 342 | DMS 561,135 | EFI 11.9 %  
Kappa-Casein: AB Beta-Casein: A2A2  
Haplotype: HMW1 | Genetic Codes: MW TC TD TL TP TR TV TY  
AHDB Dairy & Holstein UK 202412 - GENOMIC



PLI **+827** Rel 66%

## CONFORMATION (0 UK Daughters in 0 UK Herds)

	-2	-1	0	1	2		
Stature						-1.11	Short
Chest Width						-1.19	Narrow
Body Depth						-1.12	Shallow
Angularity						+1.56	Open Rib
Rump Angle						-0.76	High Pins
Thurl Width						+0.13	Wide
R. Legs-S View						+1.01	Sickled
Foot Angle						-0.79	Low
Locomotion						+0.28	Excellent
F. Udder Att.						-0.02	Loose
R. Udder Ht.						+0.72	Very high
Udder Cleft						+0.27	Strong
Udder Depth						-1.04	Below Hock
F. Teat Place						+0.68	Close
R. Teat Place						+0.88	Close
Teat Length						-0.54	Short
Teat Sideview						+0.58	Apart

Alta UK abide by the ADHB & Holstein UK established code of Advertising. Bulls tested free for genetic recessives will not show these codes for formatting reasons. Prices are subject to change. Terms and conditions apply.

## CONFORMATION

Type Merit	0.60	Mammary	0.47
Legs & Feet	0.35	Rel	53%

## PRODUCTION (0 UK Daughters in 0 UK Herds)

Milk	+1199 Kgs	+73% Rel
Protein	+39.9 Kgs	0.00%
Fat	+60.9 Kgs	+0.13%

## HEALTH & MANAGEMENT

Lifespan	40	Ease of Milk	-0.42
Fertility	-0.9	Temperament	+0.6
SCC	-4	Maintenance	-21
MAST	+1	Dairy Carcass	1.5
Calf Survival	+1.5	TB Advantage	0.6 44%
Lameness Advantage	+1.7	Gestation Length	-2 48%
Digital Dermatitis	+0.1	Feed Advantage	+270 43%
Healthy Cow	+49 56%	Enviro Cow	+4.5 69%

## CALVING TRAITS

Direct CE	-0.1	+63% Rel	Maternal CE	0.9	+52% Rel
-----------	------	----------	-------------	-----	----------



# AltaMASQUERADE

65003247843505 | H07760

PEAK ALTAMASQUERADE-ET  
AltaKEVLOW X PURSUIT X MEDLEY  
HO840M003247843505 | DOB 4/8/2022

aAa 354 | DMS 234,246 | EFI 12.5 %  
Kappa-Casein: AE Beta-Casein: A1A2  
Genetic Codes: TC TD TE TL TP TR TV TY  
AHDB Dairy & Holstein UK 202412 - GENOMIC



PLI **+767** Rel 66%

## CONFORMATION (0 UK Daughters in 0 UK Herds)

	-2	-1	0	1	2		
Stature						-0.31	Short
Chest Width						-0.87	Narrow
Body Depth						-1.66	Shallow
Angularity						+0.08	Open Rib
Rump Angle						+1.66	Low Pins
Thurl Width						-0.22	Narrow
R. Legs-S View						+0.55	Sickled
Foot Angle						-0.70	Low
Locomotion						+0.73	Excellent
F. Udder Att.						-0.55	Loose
R. Udder Ht.						+0.20	Very high
Udder Cleft						-0.02	Broken
Udder Depth						+0.09	Above hock
F. Teat Place						-0.05	Outside
R. Teat Place						-0.09	Apart
Teat Length						+0.01	Long
Teat Sideview						+0.77	Apart

Alta UK abide by the ADHB & Holstein UK established code of Advertising. Bulls tested free for genetic recessives will not show these codes for formatting reasons. Prices are subject to change. Terms and conditions apply. Proud to use independent data powered by AHDB Dairy.

## CONFORMATION

Type Merit	-0.24	Mammary	0.19
Legs & Feet	0.52	Rel	55%

## PRODUCTION (0 UK Daughters in 0 UK Herds)

Milk	+649 Kgs	+72% Rel
Protein	+29.4 Kgs	+0.09%
Fat	+45.9 Kgs	+0.22%

## HEALTH & MANAGEMENT

Lifespan	107	Ease of Milk	+0.67
Fertility	+7.9	Temperament	+0.8
SCC	-19	Maintenance	-9
MAST	-1	Dairy Carcass	1.0
Calf Survival	-0.5	TB Advantage	2.8 44%
Lameness Advantage	+1.4	Gestation Length	-3 88%
Digital Dermatitis	+0.3	Feed Advantage	+143 45%
Healthy Cow	+171 57%	Enviro Cow	+3.8 68%

## CALVING TRAITS

Direct CE	0.1	+66% Rel	Maternal CE	1.1	+50% Rel
-----------	-----	----------	-------------	-----	----------

# PEAK AltaMCCOY-ET

AltaJANUS X AltaMAGNIFIQUE X FASTBALL



**NEW**

H0840M003269404970

DOB 7/12/2023

Kappa-Casein AA | Beta-Casein A2A2

aAa 423 | DMS 345,234 | EFI 11.9 %

Haplotypes HH1F HH2F HH3F HH4F HH5F HCDF HH6F HMW0

Genetic Codes TC TD TE TL TP TR TV TY

Current Proof GBR-202412 | Genomic Young Sire

AHDB Dairy & Holstein UK 12/2024

## CONFORMATION 0 UK Daughters in 0 UK Herds (53% Rel)

Type Merit								
Type Merit								+1.20
Mammary								+1.47
Legs & Feet								+0.30
	-2	-1	0	1	2			
Stature								-0.60 Short
Chest Width								-0.15 Narrow
Body Depth								-0.55 Shallow
Angularity								+0.46 Open Rib
Rump Angle								-0.23 High Pins
Thurl Width								+0.21 Wide
R. Legs-S View								-0.31 Straight
Foot Angle								0.15 Steep
Locomotion								0.31 Excellent
F. Udder Att.								1.02 Tight
R. Udder Ht.								1.37 Very high
Udder Cleft								0.54 Strong
Udder Depth								0.69 Above hock
F. Teat Place								1.09 Close
R. Teat Place								1.63 Close
Teat Length								-0.40 Short
Teat Sideview								0.32 Apart

PLI  
Rel 66%

787



## PRODUCTION 0 UK Daughters in 0 UK Herds (73% Rel)

Milk	+655 Kgs	73% Rel
Protein	+27.2 Kgs	+0.06%
Fat	+48.6 Kgs	+0.25%

## HEALTH & MANAGEMENT

Lifespan	119	Ease of Milk	0.34		
Fertility	+7.9	Temperament	0.49		
SCC	-10	Maintenance	-8		
MAST	-2	Dairy Carcass	1.3		
Calf Survival	+1.0	Digital Dermatitis	-0.2		
Lameness Advantage	+0.6	Gestation Length	-2	49% Rel	
TB Advantage	4.0	44% Rel	Feed Advantage	+169	43% Rel
Healthy Cow	+193	56% Rel	Enviro Cow	+4.0	69% Rel

## CALVING TRAITS

Direct CE	0.3	63% Rel	Maternal CE	0.8	52% Rel
-----------	-----	---------	-------------	-----	---------

Alta UK abide by the ADHB & Holstein UK established code of Advertising Prices are subject to change. Terms and conditions apply.  
Proud to use independent data powered by AHDB Dairy.



**PLI +801 Rel 66%**

# AltaMULLER

65003252198122 | HO8078

PEAK ALTAMULLER-ET  
AltaEXQUISITE X PURSUIT X MEDLEY  
HO840M003252198122 | DOB 11/2/2022

aAa 243 | DMS 561 | EFI 12.5 %  
Kappa-Casein: BB Beta-Casein: A1A2  
Haplotype: HH6C | Genetic Codes: TC TD TE TL TP TR TV TY  
AHDB Dairy & Holstein UK 202412 - GENOMIC



## CONFORMATION

Type Merit	1.21	Mammary	1.18
Legs & Feet	1.17	Rel	54%

## PRODUCTION (0 UK Daughters in 0 UK Herds)

Milk	+552 Kgs	+73% Rel
Protein	+25.0 Kgs	+0.07%
Fat	+40.1 Kgs	+0.20%

## HEALTH & MANAGEMENT

Lifespan	149	Ease of Milk	+0.92
Fertility	+12.0	Temperament	+0.0
SCC	-23	Maintenance	-3
MAST	-2	Dairy Carcass	0.5
Calf Survival	+2.8	TB Advantage	4.5 44%
Lameness Advantage	+1.5	Gestation Length	-3 55%
Digital Dermatitis	+0.1	Feed Advantage	+90 45%
Healthy Cow	+299 57%	Enviro Cow	+3.5 69%

## CALVING TRAITS

Direct CE	0.5	+64% Rel	Maternal CE	1.1	+51% Rel
-----------	-----	----------	-------------	-----	----------

## CONFORMATION (0 UK Daughters in 0 UK Herds)

	-2	-1	0	1	2	
Stature						-0.06 Short
Chest Width						-0.30 Narrow
Body Depth						-1.18 Shallow
Angularity						+0.07 Open Rib
Rump Angle						+0.51 Low Pins
Thurl Width						-0.09 Narrow
R. Legs-S View						+0.47 Sickled
Foot Angle						+0.03 Steep
Locomotion						+1.23 Excellent
F. Udder Att.						+0.77 Tight
R. Udder Ht.						+0.98 Very high
Udder Cleft						-0.03 Broken
Udder Depth						+1.07 Above hock
F. Teat Place						-0.19 Outside
R. Teat Place						-0.61 Apart
Teat Length						-0.60 Short
Teat Sideview						+0.75 Apart

Alta UK abide by the ADHB & Holstein UK established code of Advertising. Bulls tested free for genetic recessives will not show these codes for formatting reasons. Prices are subject to change. Terms and conditions apply.



**PLI +720 Rel 66%**

# AltaORIONSBELT

65003252198374 | HO8186

PEAK ALTAORIONSBELT-ET  
AltaGADZOOK X NO EXCUSE X RIVETING  
HO840M003252198374 | DOB 12/30/2022

aAa 243 | DMS 135,561 | EFI 11.7 %  
Kappa-Casein: AB Beta-Casein: A2A2  
Genetic Codes: TC TD TE TL TP TR TV TY  
AHDB Dairy & Holstein UK 202412 - GENOMIC



## CONFORMATION

Type Merit	1.06	Mammary	1.83
Legs & Feet	0.37	Rel	53%

## PRODUCTION (0 UK Daughters in 0 UK Herds)

Milk	+970 Kgs	+73% Rel
Protein	+28.3 Kgs	-0.04%
Fat	+35.0 Kgs	-0.05%

## HEALTH & MANAGEMENT

Lifespan	168	Ease of Milk	+0.09
Fertility	+8.5	Temperament	+0.8
SCC	-22	Maintenance	1
MAST	-2	Dairy Carcass	-0.3
Calf Survival	+1.0	TB Advantage	4.2 43%
Lameness Advantage	+2.6	Gestation Length	-3 53%
Digital Dermatitis	+0.4	Feed Advantage	+105 45%
Healthy Cow	+264 56%	Enviro Cow	+3.5 69%

## CALVING TRAITS

Direct CE	0.7	+61% Rel	Maternal CE	1.2	+50% Rel
-----------	-----	----------	-------------	-----	----------

## CONFORMATION (0 UK Daughters in 0 UK Herds)

	-2	-1	0	1	2	
Stature						+0.75 Tall
Chest Width						-0.67 Narrow
Body Depth						-1.02 Shallow
Angularity						+0.66 Open Rib
Rump Angle						+0.30 Low Pins
Thurl Width						+1.01 Wide
R. Legs-S View						-0.71 Straight
Foot Angle						+0.28 Steep
Locomotion						+0.23 Excellent
F. Udder Att.						+1.52 Tight
R. Udder Ht.						+1.05 Very high
Udder Cleft						+0.56 Strong
Udder Depth						+1.89 Above hock
F. Teat Place						+0.85 Close
R. Teat Place						+1.07 Close
Teat Length						-0.70 Short
Teat Sideview						+1.03 Apart

Alta UK abide by the ADHB & Holstein UK established code of Advertising. Bulls tested free for genetic recessives will not show these codes for formatting reasons. Prices are subject to change. Terms and conditions apply. Proud to use independent data powered by AHDB Dairy.



**PLI** **+779** Rel 66%

# AltaPIZZAZZ

6500325155560 | H08190

PEAK ALTAPIZZAZZ-ET  
 AltaOVERTAKE X INCREDIBLE X PURSUIT  
 H0840M00325155560 | DOB 9/12/2022  
 aAa 432 | DMS 246,126 | EFI 11.7 %  
 Kappa-Casein: BB Beta-Casein: A2A2  
 Genetic Codes: TC TD TE TL TP TR TV TY  
 AHDB Dairy & Holstein UK 202412 - GENOMIC



## CONFORMATION

Type Merit	1.17	Mammary	1.50
Legs & Feet	0.45	Rel	53%

## PRODUCTION (0 UK Daughters in 0 UK Herds)

Milk	+523 Kgs	+73% Rel
Protein	+27.5 Kgs	+0.11%
Fat	+41.6 Kgs	+0.23%

## HEALTH & MANAGEMENT

Lifespan	146	Ease of Milk	+0.27
Fertility	+6.6	Temperament	-0.2
SCC	-18	Maintenance	-7
MAST	-1	Dairy Carcass	1.2
Calf Survival	+1.6	TB Advantage	3.1 43%
Lameness Advantage	+2.6	Gestation Length	-1 53%
Digital Dermatitis	+0.7	Feed Advantage	+116 45%
Healthy Cow	+225 56%	Enviro Cow	+3.8 69%

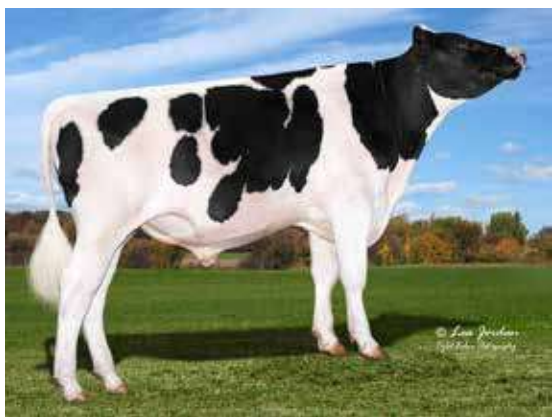
## CALVING TRAITS

Direct CE	0.4	+69% Rel	Maternal CE	1.0	+50% Rel
-----------	-----	----------	-------------	-----	----------

## CONFORMATION (0 UK Daughters in 0 UK Herds)

	-2	-1	0	1	2		
Stature						-0.48	Short
Chest Width						-0.24	Narrow
Body Depth						-1.10	Shallow
Angularity						+0.10	Open Rib
Rump Angle						+0.19	Low Pins
Thurl Width						+1.43	Wide
R. Legs-S View						+0.12	Sickled
Foot Angle						-0.73	Low
Locomotion						+0.56	Excellent
F. Udder Att.						+1.45	Tight
R. Udder Ht.						+0.72	Very high
Udder Cleft						+0.50	Strong
Udder Depth						+1.10	Above hock
F. Teat Place						+1.13	Close
R. Teat Place						+0.64	Close
Teat Length						+0.04	Long
Teat Sideview						+0.22	Apart

Alta UK abide by the ADHB & Holstein UK established code of Advertising. Bulls tested free for genetic recessives will not show these codes for formatting reasons. Prices are subject to change. Terms and conditions apply.



**PLI** **+697** Rel 68%

# AltaPOWERBUCK

65003213001199 | H07219

PEAK ALTAPOWERBUCK-ET  
 AltaTIKI X PURSUIT X MEDLEY  
 H0840M003213001199 | DOB 9/12/2020  
 aAa 432 | DMS 246,234 | EFI 12.3 %  
 Kappa-Casein: AB Beta-Casein: A1A2  
 Genetic Codes: TC TD TE TL TP TR TV TY  
 AHDB Dairy & Holstein UK 202412 - GENOMIC



## CONFORMATION

Type Merit	1.70	Mammary	1.67
Legs & Feet	0.82	Rel	57%

## PRODUCTION (0 UK Daughters in 0 UK Herds)(10 D | 6 H 100% US)

Milk	+1025 Kgs	+74% Rel
Protein	+29.4 Kgs	-0.05%
Fat	+31.6 Kgs	-0.11%

## HEALTH & MANAGEMENT

Lifespan	165	Ease of Milk	+0.44
Fertility	+10.4	Temperament	+0.2
SCC	-20	Maintenance	0
MAST	-1	Dairy Carcass	2.2
Calf Survival	-0.4	TB Advantage	3.6 51%
Lameness Advantage	+1.0	Gestation Length	-2 99%
Digital Dermatitis	+0.1	Feed Advantage	+83 46%
Healthy Cow	+241 63%	Enviro Cow	+3.3 70%

## CALVING TRAITS

Direct CE	0.0	+75% Rel	Maternal CE	1.5	+52% Rel
-----------	-----	----------	-------------	-----	----------

## CONFORMATION (0 UK Daughters in 0 UK Herds) (14 D | 3 H 83%R US)

	-2	-1	0	1	2		
Stature						-0.67	Short
Chest Width						+1.12	Wide
Body Depth						-0.80	Shallow
Angularity						-0.12	Coarse
Rump Angle						+0.06	Low Pins
Thurl Width						+0.55	Wide
R. Legs-S View						-0.15	Straight
Foot Angle						+0.01	Steep
Locomotion						+0.88	Excellent
F. Udder Att.						+1.01	Tight
R. Udder Ht.						+1.01	Very high
Udder Cleft						+0.04	Strong
Udder Depth						+0.79	Above hock
F. Teat Place						-0.08	Outside
R. Teat Place						-0.25	Apart
Teat Length						+0.19	Long
Teat Sideview						+0.86	Apart

Alta UK abide by the ADHB & Holstein UK established code of Advertising. Bulls tested free for genetic recessives will not show these codes for formatting reasons. Prices are subject to change. Terms and conditions apply. Proud to use independent data powered by AHDB Dairy.





# AltaSALMON

65003247752626 | HO8187

OCD ALTASALMON-ET  
 ZAPPY X CONWAY X ACURA  
 HO840M003247752626 | DOB 11/23/2022

aAa 243 | DMS 234,345 | EFI 12.3 %  
 Kappa-Casein: BB Beta-Casein: A2A2  
 Haplotype: HH6C | Genetic Codes: TC TD TE TL TP TR TV TY  
 AHDB Dairy & Holstein UK 202412 - GENOMIC



**PLI** +815 Rel 66%

## CONFORMATION (0 UK Daughters in 0 UK Herds)

	-2	-1	0	1	2	
Stature			0			-0.12 Short
Chest Width						-1.04 Narrow
Body Depth						-0.66 Shallow
Angularity						+1.54 Open Rib
Rump Angle						+1.23 Low Pins
Thurl Width						+0.52 Wide
R. Legs-S View						+1.33 Sickled
Foot Angle						-0.38 Low
Locomotion						+0.74 Excellent
F. Udder Att.						+0.58 Tight
R. Udder Ht.						0.00 Very Low
Udder Cleft						-0.11 Broken
Udder Depth						+0.14 Above hock
F. Teat Place						-0.06 Outside
R. Teat Place						-0.03 Apart
Teat Length						+0.08 Long
Teat Sideview						-0.07 Close

Alta UK abide by the ADHB & Holstein UK established code of Advertising. Bulls tested free for genetic recessives will not show these codes for formatting reasons. Prices are subject to change. Terms and conditions apply.

## CONFORMATION

Type Merit	0.80	Mammary	0.49
Legs & Feet	0.94	Rel	53%

## PRODUCTION (0 UK Daughters in 0 UK Herds)

Milk	+844 Kgs	+72% Rel
Protein	+34.2 Kgs	+0.07%
Fat	+49.2 Kgs	+0.17%

## HEALTH & MANAGEMENT

Lifespan	134	Ease of Milk	-0.11
Fertility	+6.4	Temperament	+0.1
SCC	-15	Maintenance	-11
MAST	-1	Dairy Carcass	0.5
Calf Survival	+0.2	TB Advantage	3.7 43%
Lameness Advantage	+0.9	Gestation Length	-3 49%
Digital Dermatitis	+0.3	Feed Advantage	+147 45%
Healthy Cow	+178 56%	Enviro Cow	+4.2 68%

## CALVING TRAITS

Direct CE	0.1	+63% Rel	Maternal CE	1.0	+53% Rel
-----------	-----	----------	-------------	-----	----------



# AltaSEVERUS

65003224956127 | HO7221

PEAK ALTASEVERUS-ET  
 AltaPLINKO X CRIMSON X DUKE  
 HO840M003224956127 | DOB 2/8/2021

aAa 324 | DMS 345,456 | EFI 12.0 %  
 Kappa-Casein: AB Beta-Casein: A2A2  
 Genetic Codes: TC TD TE TL TP TR TV TY  
 AHDB Dairy & Holstein UK 202412 - GENOMIC



**PLI** +826 Rel 68%

## CONFORMATION (0 UK Daughters in 0 UK Herds)

	-2	-1	0	1	2	
Stature			0			-0.29 Short
Chest Width						-1.03 Narrow
Body Depth						-1.61 Shallow
Angularity						-0.31 Coarse
Rump Angle						+2.09 Low Pins
Thurl Width						-0.68 Narrow
R. Legs-S View						+0.95 Sickled
Foot Angle						+0.07 Steep
Locomotion						-0.53 Poor
F. Udder Att.						-0.90 Loose
R. Udder Ht.						-1.46 Very Low
Udder Cleft						-1.22 Broken
Udder Depth						-0.53 Below Hock
F. Teat Place						-0.92 Outside
R. Teat Place						-0.60 Apart
Teat Length						+0.12 Long
Teat Sideview						-0.73 Close

Alta UK abide by the ADHB & Holstein UK established code of Advertising. Bulls tested free for genetic recessives will not show these codes for formatting reasons. Prices are subject to change. Terms and conditions apply. Proud to use independent data powered by AHDB Dairy.

## CONFORMATION

Type Merit	-2.21	Mammary	-1.18
Legs & Feet	-0.92	Rel	58%

## PRODUCTION (0 UK Daughters in 0 UK Herds)

Milk	+738 Kgs	+74% Rel
Protein	+32.9 Kgs	+0.09%
Fat	+40.8 Kgs	+0.12%

## HEALTH & MANAGEMENT

Lifespan	137	Ease of Milk	-0.91
Fertility	+13.9	Temperament	-0.3
SCC	-23	Maintenance	-9
MAST	-2	Dairy Carcass	1.9
Calf Survival	+0.6	TB Advantage	2.8 52%
Lameness Advantage	+1.2	Gestation Length	-4 99%
Digital Dermatitis	+0.1	Feed Advantage	+158 46%
Healthy Cow	+219 64%	Enviro Cow	+4.1 70%

## CALVING TRAITS

Direct CE	-0.2	+74% Rel	Maternal CE	1.2	+55% Rel
-----------	------	----------	-------------	-----	----------



# AltaSNAZZY

**NEW**

65003242815743

PEN-COL ALTASNAZZY-ET  
SHEEPSTER X GAMEDAY X LEGACY  
HO840M003242815743 | DOB 6/1/2023

aAa 234 | DMS 345,135 | EFI 11.4 %

Kappa-Casein: AA Beta-Casein: A2A2  
Genetic Codes: TC TD TE TL TP TR TV TY  
AHDB Dairy & Holstein UK 202412 - GENOMIC



PLI **+830** Rel 66%

## CONFORMATION (0 UK Daughters in 0 UK Herds)

	-2	-1	0	1	2		
Stature						+0.26	Tall
Chest Width						-0.62	Narrow
Body Depth						-0.34	Shallow
Angularity						+2.01	Open Rib
Rump Angle						+1.14	Low Pins
Thurl Width						0.00	Narrow
R. Legs-S View						+1.34	Sickled
Foot Angle						-0.50	Low
Locomotion						+0.61	Excellent
F. Udder Att.						+0.86	Tight
R. Udder Ht.						+1.17	Very high
Udder Cleft						+0.83	Strong
Udder Depth						+0.32	Above hock
F. Teat Place						+1.27	Close
R. Teat Place						+1.33	Close
Teat Length						-1.42	Short
Teat Sideview						+0.96	Apart

Alta UK abide by the ADHB & Holstein UK established code of Advertising. Bulls tested free for genetic recessives will not show these codes for formatting reasons. Prices are subject to change. Terms and conditions apply.

## CONFORMATION

Type Merit	1.66	Mammary	1.56
Legs & Feet	0.93	Rel	53%

## PRODUCTION (0 UK Daughters in 0 UK Herds)

Milk	+942 Kgs	+73% Rel
Protein	+37.4 Kgs	+0.07%
Fat	+59.3 Kgs	+0.23%

## HEALTH & MANAGEMENT

Lifespan	67	Ease of Milk	+1.15
Fertility	-0.3	Temperament	+0.3
SCC	-7	Maintenance	-5
MAST	0	Dairy Carcass	0.7
Calf Survival	+1.3	TB Advantage	1.0 43%
Lameness Advantage	+2.4	Gestation Length	-2 54%
Digital Dermatitis	+0.5	Feed Advantage	+171 43%
Healthy Cow	+97 56%	Enviro Cow	+4.3 69%

## CALVING TRAITS

Direct CE	-1.0	+62% Rel	Maternal CE	0.4	+52% Rel
-----------	------	----------	-------------	-----	----------



# AltaSOLITAIRE

**NEW**

65003269404797

PEAK ALTASOLITAIRE-ET  
AltaJANUS X AltaWHEELHOUSE X LIONEL  
HO840M003269404797 | DOB 6/2/2023

aAa 423 | DMS 123,126 | EFI 12.3 %

Kappa-Casein: AB Beta-Casein: A1A2  
Haplotype: HMW1 | Genetic Codes: MW TC TD TL TP TR TV TY  
AHDB Dairy & Holstein UK 202412 - GENOMIC



PLI **+772** Rel 66%

## CONFORMATION (0 UK Daughters in 0 UK Herds)

	-2	-1	0	1	2		
Stature						-0.37	Short
Chest Width						+0.02	Wide
Body Depth						-0.47	Shallow
Angularity						+0.74	Open Rib
Rump Angle						+0.02	Low Pins
Thurl Width						+1.11	Wide
R. Legs-S View						+1.74	Sickled
Foot Angle						-1.71	Low
Locomotion						+0.17	Excellent
F. Udder Att.						+0.75	Tight
R. Udder Ht.						+0.92	Very high
Udder Cleft						-0.21	Broken
Udder Depth						+0.32	Above hock
F. Teat Place						+0.94	Close
R. Teat Place						+0.99	Close
Teat Length						-0.86	Short
Teat Sideview						+0.88	Apart

Alta UK abide by the ADHB & Holstein UK established code of Advertising. Bulls tested free for genetic recessives will not show these codes for formatting reasons. Prices are subject to change. Terms and conditions apply. Proud to use independent data powered by AHDB Dairy.

## CONFORMATION

Type Merit	0.96	Mammary	1.15
Legs & Feet	-0.13	Rel	53%

## PRODUCTION (0 UK Daughters in 0 UK Herds)

Milk	+559 Kgs	+73% Rel
Protein	+27.3 Kgs	+0.10%
Fat	+42.3 Kgs	+0.22%

## HEALTH & MANAGEMENT

Lifespan	107	Ease of Milk	+0.03
Fertility	+14.1	Temperament	+0.4
SCC	-9	Maintenance	-5
MAST	-1	Dairy Carcass	1.0
Calf Survival	+1.6	TB Advantage	2.0 44%
Lameness Advantage	+1.6	Gestation Length	-1 49%
Digital Dermatitis	+0.2	Feed Advantage	+105 43%
Healthy Cow	+229 56%	Enviro Cow	+3.5 69%

## CALVING TRAITS

Direct CE	0.1	+63% Rel	Maternal CE	0.9	+53% Rel
-----------	-----	----------	-------------	-----	----------

# PEAK AltaSTRONGHOLD-ET

POWERSTAR X ZILLION X PURSUIT



**NEW**

H0840M003257827578

DOB 5/6/2023

Kappa-Casein AB | Beta-Casein A2A2

aAa 435 | DMS 345,456 | EFI 12.2 %

Haplotypes HH1F HH2F HH3F HH4F HH5C HCDF HH6F HMW0

Genetic Codes TC TD TE TL TP TR TV TY

Current Proof GBR-202412 | Genomic Young Sire

AHDB Dairy & Holstein UK 12/2024

## CONFORMATION 0 UK Daughters in 0 UK Herds (53% Rel)

	-2	-1	0	1	2		
Type Merit						+1.40	
Mammary						+0.95	
Legs & Feet						+0.86	
Stature						+0.25	Tall
Chest Width						+1.44	Wide
Body Depth						+0.59	Deep
Angularity						+0.75	Open Rib
Rump Angle						-0.38	High Pins
Thurl Width						+1.06	Wide
R. Legs-S View						+0.91	Sickled
Foot Angle						-0.43	Low
Locomotion						0.90	Excellent
F. Udder Att.						0.69	Tight
R. Udder Ht.						0.12	Very high
Udder Cleft						0.67	Strong
Udder Depth						0.06	Above hock
F. Teat Place						1.03	Close
R. Teat Place						1.44	Close
Teat Length						-1.09	Short
Teat Sideview						1.32	Apart

PLI  
Rel 66%

813



## PRODUCTION 0 UK Daughters in 0 UK Herds (73% Rel)

Milk	+770 Kgs	73% Rel
Protein	+36.5 Kgs	+0.12%
Fat	+45.7 Kgs	+0.16%

## HEALTH & MANAGEMENT

Lifespan	119	Ease of Milk	0.91		
Fertility	+3.0	Temperament	0.27		
SCC	-25	Maintenance	10		
MAST	-1	Dairy Carcass	1.6		
Calf Survival	+1.3	Digital Dermatitis	-0.2		
Lameness Advantage	+0.1	Gestation Length	-1	48% Rel	
TB Advantage	2.8	44% Rel	Feed Advantage	+71	43% Rel
Healthy Cow	+169	56% Rel	Enviro Cow	+3.9	69% Rel

## CALVING TRAITS

Direct CE	-0.4	63% Rel	Maternal CE	1.0	52% Rel
-----------	------	---------	-------------	-----	---------

Alta UK abide by the ADHB & Holstein UK established code of Advertising Prices are subject to change. Terms and conditions apply.  
Proud to use independent data powered by AHDB Dairy.



© Lisa Jordan  
Light Photo Photography

PLI **+836** Rel 66%

# AltaSUNDAY

65003258824748

OCD ALTASUNDAY-ET  
ZAPPY X CONWAY X ACURA  
HO840M003258824748 | DOB 11/27/2022

aAa 342 | DMS 234,345 | EFI 11.9 %  
Kappa-Casein: BB Beta-Casein: A2A2  
Haplotype: HH6C | Genetic Codes: TC TD TE TL TP TR TV TY  
AHDB Dairy & Holstein UK 202412 - GENOMIC



## CONFORMATION

Type Merit	0.58	Mammary	0.99
Legs & Feet	0.43	Rel	53%

## PRODUCTION (0 UK Daughters in 0 UK Herds)

Milk	+586 Kgs	+72% Rel
Protein	+30.6 Kgs	+0.12%
Fat	+45.3 Kgs	+0.24%

## HEALTH & MANAGEMENT

Lifespan	149	Ease of Milk	+0.63
Fertility	+8.4	Temperament	-0.1
SCC	-17	Maintenance	-8
MAST	-2	Dairy Carcass	0.1
Calf Survival	+0.7	TB Advantage	3.1 43%
Lameness Advantage	+2.0	Gestation Length	-3 49%
Digital Dermatitis	+0.6	Feed Advantage	+127 45%
Healthy Cow	+227 56%	Enviro Cow	+4.1 68%

## CALVING TRAITS

Direct CE	0.3	+63% Rel	Maternal CE	1.3	+53% Rel
-----------	-----	----------	-------------	-----	----------

## CONFORMATION (0 UK Daughters in 0 UK Herds)

	-2	-1	0	1	2		
Stature						-0.34	Short
Chest Width						-0.62	Narrow
Body Depth						-0.76	Shallow
Angularity						+0.21	Open Rib
Rump Angle						+0.87	Low Pins
Thurl Width						+0.32	Wide
R. Legs-S View						+0.81	Sickled
Foot Angle						-0.36	Low
Locomotion						+0.41	Excellent
F. Udder Att.						+1.63	Tight
R. Udder Ht.						+0.17	Very high
Udder Cleft						-0.11	Broken
Udder Depth						+1.02	Above hock
F. Teat Place						+0.51	Close
R. Teat Place						+0.50	Close
Teat Length						-0.68	Short
Teat Sideview						-0.20	Close

Alta UK abide by the ADHB & Holstein UK established code of Advertising. Bulls tested free for genetic recessives will not show these codes for formatting reasons. Prices are subject to change. Terms and conditions apply.

# CALF'S CHOICE TOTAL® 100

Only whole bovine colostrum replacers provide newborns with the colostrum protein, colostrum fat and other critical ingredients required within hours of birth.

- ◆ Whole Bovine Colostrum - not a manufactured formula
- ◆ High in Colostral Fat - important energy source required by calves immediately after birth
- ◆ Free of disease causing organisms - tested for safety and efficacy. EBL free, TB free
- ◆ Convenient - mixing in under 15 seconds
- ◆ GMP+ FSA Assured

Available in a 4.9kg pail or a box of 15 individual servings

For more information, contact your local Alta advisor or email us at [info@altagenetics.com](mailto:info@altagenetics.com) | [uk.altagenetics.com](http://uk.altagenetics.com)





# AltaTABLOID

**NEW**

65003269404962

PEAK ALTATABLOID-ET  
 TYROL X HIGH ENERGY X TROPIC  
 HO840M003269404962 | DOB 7/10/2023

aAa 234 | DMS 234,123 | EFI 11.4 %  
 Kappa-Casein: AB Beta-Casein: A1A2  
 Haplotype: HH6C | Genetic Codes: TC TD TE TL TP TR TV TY  
 AHDB Dairy & Holstein UK 202412 - GENOMIC



**PLI** +547 Rel 66%

## CONFORMATION (0 UK Daughters in 0 UK Herds)

	-2	-1	0	1	2		
Stature						+1.77	Tall
Chest Width						+0.31	Wide
Body Depth						+0.84	Deep
Angularity						+1.57	Open Rib
Rump Angle						-1.22	High Pins
Thurl Width						+1.10	Wide
R. Legs-S View						-0.28	Straight
Foot Angle						+0.31	Steep
Locomotion						+1.01	Excellent
F. Udder Att.						+1.71	Tight
R. Udder Ht.						+2.32	Very high
Udder Cleft						+1.71	Strong
Udder Depth						+1.83	Above hock
F. Teat Place						+0.49	Close
R. Teat Place						+0.99	Close
Teat Length						-0.07	Short
Teat Sideview						+0.76	Apart

Alta UK abide by the ADHB & Holstein UK established code of Advertising. Bulls tested free for genetic recessives will not show these codes for formatting reasons. Prices are subject to change. Terms and conditions apply.

## CONFORMATION

Type Merit	1.42	Mammary	2.39
Legs & Feet	0.83	Rel	53%

## PRODUCTION (0 UK Daughters in 0 UK Herds)

Milk	+624 Kgs	+73% Rel
Protein	+24.6 Kgs	+0.04%
Fat	+24.1 Kgs	-0.01%

## HEALTH & MANAGEMENT

Lifespan	107	Ease of Milk	+1.55
Fertility	+10.8	Temperament	+0.5
SCC	-3	Maintenance	15
MAST	0	Dairy Carcass	0.2
Calf Survival	+2.0	TB Advantage	2.4 44%
Lameness Advantage	+1.7	Gestation Length	-1 48%
Digital Dermatitis	+0.4	Feed Advantage	-28 43%
Healthy Cow	+210 56%	Enviro Cow	+2.2 69%

## CALVING TRAITS

Direct CE	-1.0	+63% Rel	Maternal CE	0.9	+53% Rel
-----------	------	----------	-------------	-----	----------



# AltaTHUNDERBIRD

65003250026269 | HO8183

PEAK ALTATHUNDERBIRD-ET  
 PERFECT X AltaMAGNIFIQUE X AltaZAZZLE  
 HO840M003250026269 | DOB 2/21/2023

aAa 243 | DMS 135 | EFI 11.4 %  
 Kappa-Casein: BB Beta-Casein: A2A2  
 Genetic Codes: TC TD TE TL TP TR TV TY  
 AHDB Dairy & Holstein UK 202412 - GENOMIC



**PLI** +653 Rel 67%

## CONFORMATION (0 UK Daughters in 0 UK Herds)

	-2	-1	0	1	2		
Stature						+0.99	Tall
Chest Width						+1.14	Wide
Body Depth						+1.00	Deep
Angularity						+1.30	Open Rib
Rump Angle						-0.23	High Pins
Thurl Width						+2.51	Wide
R. Legs-S View						+0.44	Sickled
Foot Angle						+0.31	Steep
Locomotion						+1.76	Excellent
F. Udder Att.						+0.99	Tight
R. Udder Ht.						+0.73	Very high
Udder Cleft						+0.59	Strong
Udder Depth						+0.39	Above hock
F. Teat Place						+1.18	Close
R. Teat Place						+1.02	Close
Teat Length						+0.32	Long
Teat Sideview						+0.38	Apart

Alta UK abide by the ADHB & Holstein UK established code of Advertising. Bulls tested free for genetic recessives will not show these codes for formatting reasons. Prices are subject to change. Terms and conditions apply. Proud to use independent data powered by AHDB Dairy.

## CONFORMATION

Type Merit	1.77	Mammary	1.33
Legs & Feet	1.43	Rel	55%

## PRODUCTION (0 UK Daughters in 0 UK Herds)

Milk	+630 Kgs	+73% Rel
Protein	+31.0 Kgs	+0.11%
Fat	+42.8 Kgs	+0.19%

## HEALTH & MANAGEMENT

Lifespan	76	Ease of Milk	+0.98
Fertility	+3.3	Temperament	+0.1
SCC	-1	Maintenance	14
MAST	-1	Dairy Carcass	0.0
Calf Survival	+0.2	TB Advantage	3.4 44%
Lameness Advantage	+0.1	Gestation Length	-1 55%
Digital Dermatitis		Feed Advantage	+19 45%
Healthy Cow	+111 57%	Enviro Cow	+3.1 69%

## CALVING TRAITS

Direct CE	-0.4	+64% Rel	Maternal CE	1.5	+52% Rel
-----------	------	----------	-------------	-----	----------



# PROGENESIS VANCE-ET

HOLYSMOKES X AltaPLINKO X CRIMSON

HO840M003252197819

DOB 08/16/2022

Kappa-Casein BB | Beta-Casein A2A2

DMS 123,135 | EFI 12%

Haplotypes HH1F HH2F HH3F HH4F HH5F HCDF HH6F HMW0

Genetic Codes TC TD TE TL TP TR TV TY

Current Proof GBR-202412 | Genomic Young Sire

AHDB Dairy & Holstein UK 12/2024

## CONFORMATION based on 0 dtrs/0 hds (54% Rel)

Type Merit					
Type Merit					+0.93
Mammary					+0.90
Legs & Feet					+0.66
	-2	-1	0	1	2
Stature					+0.52 Tall
Chest Width					+0.48 Wide
Body Depth					+0.29 Deep
Angularity					+0.76 Open Rib
Rump Angle					+0.42 Low Pins
Thurl Width					+0.14 Wide
R. Legs S View					+0.07 Sickled
Foot Angle					+0.49 Steep
Locomotion					+1.17 Excellent
F. Udder Att.					+0.54 Tight
R. Udder Ht					+1.06 Very High
Udder Cleft					+0.47 Strong
Udder Depth					-0.07 Above Hock
F. Teat Place					+0.19 Close
R. Teat Place					+0.99 Close
Teat Length					+0.03 Long
Teat Sideview					+1.12 Apart

**PLI 718** Rel 66%

## PRODUCTION

Milk	+815 kgs	73 % Rel
Protein	+34.4 kgs	+0.08%
Fat	+41.3 kgs	+0.09%

## HEALTH & MANAGEMENT

Lifespan	64	Ease of Milk	-0.56
Fertility	5.6	Temperament	-0.15
SCC	-15	Maintenance	6
MAST	-1	Dairy Carcass	1.4
Calf Survival	-0.7	Digital Dermatitis	0.4
Lameness Advantage	+1.2	Gestation Length	-1 55% Rel
TB Advantage	1.8 43% Rel	Feed Advantage	+83 45% Rel
Healthy Cow	+129 57% Rel	Enviro Cow	+3.4 69% Rel

## CALVING TRAITS

Direct CE	-0.6 64% Rel	Maternal CE	1.2 51% Rel
-----------	--------------	-------------	-------------



**PLI +790** Rel 66%

# AltaVANDYKE

65003247843547 | H07876

PROGENESIS ALTAVANDYKE-ET

AltaZEMINI X AltaPLINKO X CRIMSON

HO840M003247843547 | DOB 4/20/2022

aAa 234 | DMS 234,345 | EFI 12.3 %

Kappa-Casein: BB Beta-Casein: A2A2

Genetic Codes: TC TD TE TL TP TR TV TY

AHDB Dairy & Holstein UK 202412 - GENOMIC



## CONFORMATION

Type Merit	-0.07	Mammary	0.29
Legs & Feet	0.05	Rel	54%

## PRODUCTION (0 UK Daughters in 0 UK Herds)

Milk	+891 Kgs	+73% Rel
Protein	+35.0 Kgs	+0.06%
Fat	+51.8 Kgs	+0.17%

## HEALTH & MANAGEMENT

Lifespan	113	Ease of Milk	+0.34
Fertility	-0.3	Temperament	+0.1
SCC	-24	Maintenance	-1
MAST	-1	Dairy Carcass	1.1
Calf Survival	+0.6	TB Advantage	3.9 44%
Lameness Advantage	+2.9	Gestation Length	-2 55%
Digital Dermatitis	+0.7	Feed Advantage	+139 45%
Healthy Cow	+129 56%	Enviro Cow	+4.1 69%

## CALVING TRAITS

Direct CE	-0.4 +63% Rel	Maternal CE	0.9 +52% Rel
-----------	---------------	-------------	--------------

Alta UK abide by the AHDB & Holstein UK established code of Advertising. Bulls tested free for genetic recessives will not show these codes for formatting reasons. Prices are subject to change. Terms and conditions apply. Proud to use independent data powered by AHDB Dairy.



# AltaWARWICK

**NEW**

65003269404878

PEAK ALTAWARWICK-ET  
ACHIEVE X AltaZEOLITE X CRIMSON  
HO840M003269404878 | DOB 6/20/2023

aAa 243 | DMS 135 | EFI 11.9 %

Kappa-Casein: AA Beta-Casein: A1A2  
Haplotype: HH6C | Genetic Codes: TC TD TE TL TP TR TV TY  
AHDB Dairy & Holstein UK 202412 - GENOMIC



PLI **+762** Rel 66%

## CONFORMATION (0 UK Daughters in 0 UK Herds)

	-2	-1	0	1	2		
Stature						+0.42	Tall
Chest Width						+1.71	Wide
Body Depth						+0.76	Deep
Angularity						+0.14	Open Rib
Rump Angle						-0.42	High Pins
Thurl Width						+1.36	Wide
R. Legs-S View						-0.25	Straight
Foot Angle						+0.37	Steep
Locomotion						-0.48	Poor
F. Udder Att.						+1.20	Tight
R. Udder Ht.						+0.88	Very high
Udder Cleft						-0.33	Broken
Udder Depth						+0.92	Above hock
F. Teat Place						-0.10	Outside
R. Teat Place						+0.22	Close
Teat Length						+0.30	Long
Teat Sideview						+0.53	Apart

Alta UK abide by the ADHB & Holstein UK established code of Advertising. Bulls tested free for genetic recessives will not show these codes for formatting reasons. Prices are subject to change. Terms and conditions apply.

## CONFORMATION

Type Merit	0.66	Mammary	1.29
Legs & Feet	-0.49	Rel	53%

## PRODUCTION (0 UK Daughters in 0 UK Herds)

Milk	+848 Kgs	+73% Rel
Protein	+32.2 Kgs	+0.04%
Fat	+49.6 Kgs	+0.17%

## HEALTH & MANAGEMENT

Lifespan	119	Ease of Milk	+0.44
Fertility	+3.9	Temperament	+1.3
SCC	-21	Maintenance	14
MAST	-3	Dairy Carcass	1.1
Calf Survival	+0.5	TB Advantage	2.3 42%
Lameness Advantage	+1.4	Gestation Length	0 49%
Digital Dermatitis	-0.2	Feed Advantage	+48 43%
Healthy Cow	+171 56%	Enviro Cow	+3.6 69%

## CALVING TRAITS

Direct CE	-0.4	+62% Rel	Maternal CE	0.8	+52% Rel
-----------	------	----------	-------------	-----	----------



# AltaWOODSIDE

64000014074900 | HO7585

PEAK ALTAWOODSIDE-ET  
AltaWHEELHOUSE X LIONEL X ACHIEVER  
HOCANM000014074900 | DOB 7/19/2021

aAa 354 | DMS 135,345 | EFI 12.5 %

Kappa-Casein: AB Beta-Casein: A2A2  
Haplotype: HMW1 | Genetic Codes: MW TC TD TL TP TR TV TY  
AHDB Dairy & Holstein UK 202412 - GENOMIC



PLI **+629** Rel 67%

## CONFORMATION (0 UK Daughters in 0 UK Herds)

	-2	-1	0	1	2		
Stature						+0.03	Tall
Chest Width						+1.03	Wide
Body Depth						+0.09	Deep
Angularity						+0.95	Open Rib
Rump Angle						-1.03	High Pins
Thurl Width						+1.67	Wide
R. Legs-S View						+0.50	Sickled
Foot Angle						-0.80	Low
Locomotion						+0.18	Excellent
F. Udder Att.						+1.02	Tight
R. Udder Ht.						+1.86	Very high
Udder Cleft						+0.53	Strong
Udder Depth						+0.26	Above hock
F. Teat Place						+0.50	Close
R. Teat Place						+1.11	Close
Teat Length						-1.17	Short
Teat Sideview						+1.72	Apart

Alta UK abide by the ADHB & Holstein UK established code of Advertising. Bulls tested free for genetic recessives will not show these codes for formatting reasons. Prices are subject to change. Terms and conditions apply. Proud to use independent data powered by AHDB Dairy.

## CONFORMATION

Type Merit	1.50	Mammary	1.80
Legs & Feet	0.14	Rel	55%

## PRODUCTION (0 UK Daughters in 0 UK Herds)

Milk	+968 Kgs	+73% Rel
Protein	+31.1 Kgs	-0.01%
Fat	+41.7 Kgs	+0.03%

## HEALTH & MANAGEMENT

Lifespan	55	Ease of Milk	+1.05
Fertility	+2.1	Temperament	+0.7
SCC	-19	Maintenance	5
MAST	-1	Dairy Carcass	2.0
Calf Survival	+0.3	TB Advantage	0.4 48%
Lameness Advantage	+1.4	Gestation Length	-2 99%
Digital Dermatitis		Feed Advantage	+56 45%
Healthy Cow	+118 58%	Enviro Cow	+2.8 69%

## CALVING TRAITS

Direct CE	-0.5	+74% Rel	Maternal CE	0.7	+52% Rel
-----------	------	----------	-------------	-----	----------



# AltaXMAN

**NEW**

65003251556220

FB PEAK ALTAXMAN-ET  
MIRRORIMAGE X GAMEDAY X ENTITY  
HO840M003251556220 | DOB 7/31/2023

aAa 324 | DMS 126,561 | EFI 12.0 %  
Kappa-Casein: AA Beta-Casein: A2A2  
Genetic Codes: TC TD TE TL TP TV TY  
AHDB Dairy & Holstein UK 202412 - GENOMIC



**PLI** +791 Rel 66%

## CONFORMATION (0 UK Daughters in 0 UK Herds)

	-2	-1	0	1	2		
Stature						-0.72	Short
Chest Width						+0.17	Wide
Body Depth						-0.11	Shallow
Angularity						+0.58	Open Rib
Rump Angle						+0.23	Low Pins
Thurl Width						+1.02	Wide
R. Legs-S View						+1.45	Sickled
Foot Angle						-0.57	Low
Locomotion						-0.14	Poor
F. Udder Att.						+0.18	Tight
R. Udder Ht.						-0.30	Very Low
Udder Cleft						-0.30	Broken
Udder Depth						-0.40	Below Hock
F. Teat Place						+0.98	Close
R. Teat Place						+0.46	Close
Teat Length						-0.99	Short
Teat Sideview						+0.23	Apart

Alta UK abide by the ADHB & Holstein UK established code of Advertising. Bulls tested free for genetic recessives will not show these codes for formatting reasons. Prices are subject to change. Terms and conditions apply.

## CONFORMATION

Type Merit	0.37	Mammary	0.19
Legs & Feet	0.14	Rel	53%

## PRODUCTION (0 UK Daughters in 0 UK Herds)

Milk	+595 Kgs	+73% Rel
Protein	+27.4 Kgs	+0.09%
Fat	+49.3 Kgs	+0.28%

## HEALTH & MANAGEMENT

Lifespan	88	Ease of Milk	+0.21
Fertility	+7.1	Temperament	+0.2
SCC	-24	Maintenance	-7
MAST	-2	Dairy Carcass	1.6
Calf Survival	+1.3	TB Advantage	-0.1 43%
Lameness Advantage	+2.5	Gestation Length	0 49%
Digital Dermatitis	+0.3	Feed Advantage	+154 43%
Healthy Cow	+195 56%	Enviro Cow	+3.8 69%

## CALVING TRAITS

Direct CE	0.2	+63% Rel	Maternal CE	0.6	+53% Rel
-----------	-----	----------	-------------	-----	----------



# AltaYOUNBETCHA

65003236692425 | H07707

PEAK ALTAYOUNBETCHA-ET  
AltaWHEELHOUSE X SOLUTION X MEDLEY  
HO840M003236692425 | DOB 7/15/2021

aAa 432 | DMS 135,345 | EFI 12.2 %  
Kappa-Casein: AB Beta-Casein: A2A2  
Genetic Codes: TC TD TE TL TP TR TV TY  
AHDB Dairy & Holstein UK 202412 - GENOMIC



**PLI** +750 Rel 67%

## CONFORMATION (0 UK Daughters in 0 UK Herds)

	-2	-1	0	1	2		
Stature						-0.88	Short
Chest Width						+1.50	Wide
Body Depth						-0.89	Shallow
Angularity						-0.74	Coarse
Rump Angle						+0.88	Low Pins
Thurl Width						+0.80	Wide
R. Legs-S View						+1.01	Sickled
Foot Angle						-0.83	Low
Locomotion						+0.41	Excellent
F. Udder Att.						-0.17	Loose
R. Udder Ht.						+0.16	Very high
Udder Cleft						-0.91	Broken
Udder Depth						-0.28	Below Hock
F. Teat Place						+0.09	Close
R. Teat Place						+0.02	Close
Teat Length						-0.42	Short
Teat Sideview						+1.36	Apart

Alta UK abide by the ADHB & Holstein UK established code of Advertising. Bulls tested free for genetic recessives will not show these codes for formatting reasons. Prices are subject to change. Terms and conditions apply. Proud to use independent data powered by AHDB Dairy.

## CONFORMATION

Type Merit	0.05	Mammary	0.23
Legs & Feet	0.26	Rel	56%

## PRODUCTION (0 UK Daughters in 0 UK Herds)

Milk	+749 Kgs	+74% Rel
Protein	+31.5 Kgs	+0.07%
Fat	+42.1 Kgs	+0.13%

## HEALTH & MANAGEMENT

Lifespan	125	Ease of Milk	+0.15
Fertility	+4.5	Temperament	-0.1
SCC	-17	Maintenance	2
MAST	-1	Dairy Carcass	1.6
Calf Survival	+0.6	TB Advantage	1.3 48%
Lameness Advantage	+0.8	Gestation Length	-2 90%
Digital Dermatitis	-0.1	Feed Advantage	+118 45%
Healthy Cow	+155 58%	Enviro Cow	+3.8 70%

## CALVING TRAITS

Direct CE	0.2	+76% Rel	Maternal CE	1.5	+52% Rel
-----------	-----	----------	-------------	-----	----------





# AltaYOUWIN

**NEW**

65003266190255

PEAK ALTAYOUWIN-ET  
AltaWOODSIDE X AltaPLINKO X DISCJOCKEY  
HO840M003266190255 | DOB 3/10/2023

aAa 432 | DMS 456,345 | EFI 11.6 %

Kappa-Casein: AA Beta-Casein: A1A2  
Haplotype: HH5C | Genetic Codes: TC TD TE TL TP TR TV TY  
AHDB Dairy & Holstein UK 202412 - GENOMIC



**PLI** +706 Rel 66%

## CONFORMATION

Type Merit	0.63	Mammary	0.87
Legs & Feet	-0.20	Rel	53%

## PRODUCTION (0 UK Daughters in 0 UK Herds)

Milk	+614 Kgs	+73% Rel
Protein	+29.3 Kgs	+0.10%
Fat	+48.7 Kgs	+0.27%

## HEALTH & MANAGEMENT

Lifespan	76	Ease of Milk	-0.06
Fertility	+4.9	Temperament	0.0
SCC	-22	Maintenance	6
MAST	-1	Dairy Carcass	0.8
Calf Survival	-0.6	TB Advantage	2.4 43%
Lameness Advantage	+1.5	Gestation Length	-2 55%
Digital Dermatitis	+0.3	Feed Advantage	+50 43%
Healthy Cow	+138 57%	Enviro Cow	+3.3 69%

## CALVING TRAITS

Direct CE	0.4	+63% Rel	Maternal CE	0.8	+53% Rel
-----------	-----	----------	-------------	-----	----------

## CONFORMATION (0 UK Daughters in 0 UK Herds)

	-2	-1	0	1	2		
Stature						+0.16	Tall
Chest Width						+0.91	Wide
Body Depth						-0.16	Shallow
Angularity						+0.53	Open Rib
Rump Angle						-0.46	High Pins
Thurl Width						+1.45	Wide
R. Legs-S View						-0.28	Straight
Foot Angle						-0.04	Low
Locomotion						-0.11	Poor
F. Udder Att.						+0.67	Tight
R. Udder Ht.						+1.62	Very high
Udder Cleft						+0.51	Strong
Udder Depth						+0.26	Above hock
F. Teat Place						-0.77	Outside
R. Teat Place						+0.10	Close
Teat Length						-0.22	Short
Teat Sideview						+0.66	Apart

Alta UK abide by the ADHB & Holstein UK established code of Advertising. Bulls tested free for genetic recessives will not show these codes for formatting reasons. Prices are subject to change. Terms and conditions apply.



# PEAK ZOWIE-ET



MIRRORIMAGE X AltaKEVLOW X AltaZAZZLE

HO840M003263337365

DOB 07/07/2023

Kappa-Casein AA | Beta-Casein A2A2

DMS 126,123 | EFI 12.6%

Haplotypes HH1F HH2F HH3F HH4F HH5F HCDF HH6F HMWO

Genetic Codes TC TD TE TL TP TR TV TY

Current Proof GBR-202412 | Genomic Young Sire

AHDB Dairy & Holstein UK 12/2024

## CONFORMATION based on 0 dtrs/0 hnds (53% Rel)

	-2	-1	0	1	2		
Type Merit						+0.63	
Mammary						+0.80	
Legs & Feet						+0.19	
Stature						+0.07	Tall
Chest Width						-0.37	Narrow
Body Depth						-0.95	Shallow
Angularity						+0.40	Open Rib
Rump Angle						-0.13	High Pins
Thurl Width						+0.41	Wide
R.Legs S View						-0.09	Straight
Foot Angle						+0.35	Steep
Locomotion						+0.19	Excellent
F.Udder Att.						+0.60	Tight
R.Udder Ht						+0.89	Very High
Udder Cleft						+0.51	Strong
Udder Depth						+0.88	Above Hock
F.Teats Place						+0.17	Close
R.Teats Place						+0.65	Close
Teat Length						-0.06	Short
Teat Sideview						-0.53	Close

Alta UK abide by the ADHB & Holstein UK established code of Advertising. Proud to use independent data powered by AHDB Dairy.

25

**PLI** 759 Rel 66%

## PRODUCTION

Milk	+604 kgs	72% Rel
Protein	+28.6 kgs	+0.01%
Fat	+52.4 kgs	+0.32%

## HEALTH & MANAGEMENT

Lifespan	70	Ease of Milk	0.02
Fertility	+6.2	Temperament	0.13
SCC	-18	Maintenance	-3
MAST	-1	Dairy Carcass	0.6
Calf Survival	-0.2	Digital Dermatitis	0.3
Lameness Advantage	+2.2	Gestation Length	-2 49% Rel
TB Advantage	4.0 43% Rel	Feed Advantage	+115 43% Rel
Healthy Cow	+146 56% Rel	Enviro Cow	+3.6 68% Rel

## CALVING TRAITS

Direct CE	+0.5	63% Rel	Maternal CE	0.6	52% Rel
-----------	------	---------	-------------	-----	---------

Prices are subject to change. Terms and conditions apply.

# BEEF X DAIRY

Ask your breeding advisor about our full range of beef sires and male sexed options.

BELGIAN BLUE | AltaSUPERBLUE



AltaSUPERBLUE  
NL 898157947  
**AI code** BB1836  
**Birthdate** 02-22-2019

BELGIAN BLUE | ALTASILVERBLU



AltaSILVERBLU  
NL 566458354  
**AI code** BB1943  
**Birthdate** 05-18-2020

ANGUS | STEP UP



Step Up  
US 19379557  
**AI code** AA1759  
**Birthdate** 03-18-2018

ANGUS | PARAGON



Paragon  
US 19833548  
**AI code** 011AN02294  
**Birthdate** 08-15-2020

CULARD CHAROLAIS | GRISY



Grisy  
FR6950643724  
**AI code** CH3977  
**Birthdate** 7-30-2011

SIMMENTAL | MISSILE



Missile  
3594131  
**AI code** SG1366  
**Birthdate** 04-16-2018

LIMOUSIN | IFOR



Ifor  
MGD13-8897  
**AI code** LN2553  
**Birthdate** 09-26-2013

HEREFORD | TIMELINE



Timeline  
US PC02930348  
**AI code** H9314  
**Birthdate** 02-28-2009

## ASK ABOUT OUR ALTA ANGUS BLEND 7

Mix of three high fertility Angus Sires ♦ Short Gestation Length ♦ Low Birth Weight



# TRENT-WAY RAE-BAN-RED-ET

NETWORK-RED X AltaALTUVE\*RC X RESOLVE

HO840M003261835770

DOB 12/09/2022

Kappa-Casein AB | Beta-Casein A1A2

DMS 234,345 | EFI 11.6%

Haplotypes HH1F HH2F HH3F HH4F HH5F HCDF HH6F HMW0

Genetic Codes TC TD TE TL TP TV TY

Current Proof GBR-202412 | Genomic Young Sire

AHDB Dairy & Holstein UK 12/2024

## CONFORMATION based on 0 dtrs/0 hnds (54% Rel)

Type Merit					
Type Merit					+0.95
Mammary					+0.70
Legs & Feet					+0.75
	-2	-1	0	1	2
Stature					+0.71 Tall
Chest Width					+0.41 Wide
Body Depth					+0.66 Deep
Angularity					+1.13 Open Rib
Rump Angle					-0.17 High Pins
Thurl Width					+0.14 Wide
R.Legs S View					+0.62 Sickled
Foot Angle					-0.34 Low
Locomotion					+1.12 Excellent
F.Udder Att.					+0.19 Tight
R.Udder Ht					+0.88 Very High
Udder Cleft					+0.48 Strong
Udder Depth					-0.40 Above Hock
F.Teat Place					+0.64 Close
R.Teat Place					+0.38 Close
Teat Length					+0.64 Long
Teat Sideview					+0.02 Apart

**PLI 513** Rel 66%

## PRODUCTION

Milk	812 kgs	73 % Rel
Protein	+26.2 kgs	-0.01%
Fat	+27.3 kgs	-0.06%

## HEALTH & MANAGEMENT

Lifespan	92	Ease of Milk	-0.52
Fertility	1.2	Temperament	+0.43
SCC	-12	Maintenance	7
MAST	1	Dairy Carcass	0.1
Calf Survival	+2.0	Digital Dermatitis	0.7
Lameness Advantage	+2.3	Gestation Length	-3 51% Rel
TB Advantage	0.9 44% Rel	Feed Advantage	+40 45% Rel
Healthy Cow	+123 55% Rel	Enviro Cow	+2.5 68% Rel

## CALVING TRAITS

## RED SIRES



# AltaRUTILANT-RED

63000549118594 | H07519

KOEPEON ALTARUTILANT-RED-ET

SPUTNIK RDC X AltaALTUVE\*RC X SALVATORE RC

HONLDM000549118594 | DOB 3/14/2021

aAa 432561 | DMS 123,126 | EFI 11.2 %

Kappa-Casein: BB Beta-Casein: A1A1

Genetic Codes: TC TD TE TL TP TV TY

AHDB Dairy & Holstein UK 202412 - GENOMIC



**PLI +667** Rel 67%

## CONFORMATION (0 UK Daughters in 0 UK Herds)

	-2	-1	0	1	2	
Stature						+0.03 Tall
Chest Width						-0.01 Narrow
Body Depth						-0.52 Shallow
Angularity						+0.43 Open Rib
Rump Angle						+1.45 Low Pins
Thurl Width						+0.59 Wide
R. Legs-S View						+0.49 Sickled
Foot Angle						-0.07 Low
Locomotion						+1.27 Excellent
F. Udder Att.						+0.06 Tight
R. Udder Ht.						+1.23 Very high
Udder Cleft						-0.13 Broken
Udder Depth						-0.02 Below Hock
F. Teat Place						+0.96 Close
R. Teat Place						+0.67 Close
Teat Length						+0.11 Long
Teat Sideview						-0.17 Close

## CONFORMATION

Type Merit	0.58	Mammary	0.43
Legs & Feet	1.14	Rel	55%

## PRODUCTION (0 UK Daughters in 0 UK Herds)

Milk	+1065 Kgs	+73% Rel
Protein	+32.1 Kgs	-0.04%
Fat	+35.3 Kgs	-0.08%

## HEALTH & MANAGEMENT

Lifespan	119	Ease of Milk	-0.65
Fertility	+2.2	Temperament	+0.2
SCC	-26	Maintenance	-1
MAST	-1	Dairy Carcass	0.1
Calf Survival	+1.5	TB Advantage	-0.4 42%
Lameness Advantage	+1.7	Gestation Length	-2 99%
Digital Dermatitis	+0.4	Feed Advantage	+84 45%
Healthy Cow	+169 56%	Enviro Cow	+3.2 69%

## CALVING TRAITS

Direct CE	-0.9	+76% Rel	Maternal CE	0.4	+51% Rel
-----------	------	----------	-------------	-----	----------



# AltaRUSHMORE-PP

65003251555972 | HO8182

PEAK ALTARUSHMORE-PP-ET  
 SPLENDIDO-P X MENDEL-P X HEROIC  
 HO840M003251555972 | DOB 4/5/2023

aAa 243 | DMS 135,561 | EFI 12.1 %  
 Kappa-Casein: AA Beta-Casein: A2A2  
 Genetic Codes: PO PP TC TD TE TL TR TV TY  
 AHDB Dairy & Holstein UK 202412 - GENOMIC



PLI **+584** Rel 66%

## CONFORMATION

Type Merit	1.28	Mammary	1.19
Legs & Feet	0.22	Rel	53%

## PRODUCTION (0 UK Daughters in 0 UK Herds)

Milk	+596 Kgs	+73% Rel
Protein	+22.6 Kgs	+0.03%
Fat	+40.4 Kgs	+0.18%

## HEALTH & MANAGEMENT

Lifespan	76	Ease of Milk	+1.16
Fertility	+6.0	Temperament	+0.5
SCC	0	Maintenance	-7
MAST	+1	Dairy Carcass	1.3
Calf Survival	+1.5	TB Advantage	0.5 45%
Lameness Advantage	+1.7	Gestation Length	-1 49%
Digital Dermatitis	+0.1	Feed Advantage	+106 45%
Healthy Cow	+122 56%	Enviro Cow	+2.9 69%

## CALVING TRAITS

Direct CE	-0.1	+63% Rel	Maternal CE	1.1	+53% Rel
-----------	------	----------	-------------	-----	----------

## CONFORMATION (0 UK Daughters in 0 UK Herds)

	-2	-1	0	1	2		
Stature						-0.25	Short
Chest Width						-0.30	Narrow
Body Depth						-0.29	Shallow
Angularity						+1.32	Open Rib
Rump Angle						-0.15	High Pins
Thurl Width						-0.21	Narrow
R. Legs-S View						+0.98	Sickled
Foot Angle						-0.69	Low
Locomotion						+0.10	Excellent
F. Udder Att.						+0.57	Tight
R. Udder Ht.						+1.06	Very high
Udder Cleft						+0.10	Strong
Udder Depth						+0.36	Above hock
F. Teat Place						+0.19	Close
R. Teat Place						+0.96	Close
Teat Length						-1.15	Short
Teat Sideview						+1.04	Apart

Alta UK abide by the ADHB & Holstein UK established code of Advertising. Bulls tested free for genetic recessives will not show these codes for formatting reasons. Prices are subject to change. Terms and conditions apply.

Rumilife® CAL24™ Calcium Supplement

# 3 REASONS TO CHOOSE CAL24

## IT'S SIMPLE.

### SAVE TIME AND LABOR

give two boluses right after calving

No need for a second bolus 12 hours later



## IT'S UNIQUE.

### TWO FORMS OF READILY AVAILABLE CALCIUM

plus magnesium & vitamin D

allow for optimal calcium absorption



## IT'S COMPLETE.

### PROVIDES IMMEDIATE AND SUSTAINED RELEASE CALCIUM

**CALCIUM CHLORIDE** acts rapidly for immediate absorption in the rumen

**CALMIN** regulates absorption over time as a combination of highly-absorbable calcium & magnesium

**VITAMIN D** helps facilitate active, sustained calcium transfer beyond the rumen



# DAUGHTER PROVEN SIRES



## AltaANTONIO

65003138948148 | H05198

AURORA ALTAANTONIO-ET  
BANDARES X COMMANDER X MAYFIELD  
H0840M003138948148 | DOB 10/16/2016

aAa 351 | DMS 135,561 | EFI 10.4 %

Kappa-Casein: BB Beta-Casein: A2A2

Genetic Codes: TC TD TE TL TP TR TV TY

AHDB Dairy & Holstein UK 2024:12 - DAUGHTER PROVEN



PLI **+613** Rel 95%

### CONFORMATION

Type Merit	1.21	Mammary	0.31
Legs & Feet	1.27	Rel	91%

### PRODUCTION (479 UK Daughters in 75 UK Herds)(3763D | 860H 14% US)

Milk	+653 Kgs	+99% Rel
Protein	+26.0 Kgs	+0.05%
Fat	+28.5 Kgs	+0.02%

### HEALTH & MANAGEMENT

Lifespan	85	Ease of Milk	+2.09
Fertility	+6.2	Temperament	+0.2
SCC	-8	Maintenance	-2
MAST	0	Dairy Carcass	0.1
Calf Survival	+2.7	TB Advantage	-8.7 95%
Lameness Advantage	+3.1	Gestation Length	+1 99%
Digital Dermatitis	+0.8	Feed Advantage	+84 62%
Healthy Cow	+172 89%	Enviro Cow	+2.8 98%

### CALVING TRAITS

Direct CE	-0.3	+91% Rel	Maternal CE	-0.4	+80% Rel
-----------	------	----------	-------------	------	----------

### CONFORMATION (121 UK Daughters in 21 UK Herds)(1047 D | 283 H 96%R US)

	-2	-1	0	1	2		
Stature						-0.69	Short
Chest Width						+0.95	Wide
Body Depth						+1.14	Deep
Angularity						+1.00	Open Rib
Rump Angle						+0.69	Low Pins
Thurl Width						+0.54	Wide
R. Legs-S View						+1.74	Sickled
Foot Angle						-2.20	Low
Locomotion						+1.46	Excellent
F. Udder Att.						0.00	Loose
R. Udder Ht.						+0.08	Very high
Udder Cleft						-0.07	Broken
Udder Depth						-1.05	Below Hock
F. Teat Place						+1.29	Close
R. Teat Place						+0.75	Close
Teat Length						-1.34	Short
Teat Sideview						+0.62	Apart



## PEAK HAXL-ET

AXL X DOC X MONTEREY

H0840M003212150432

DOB 02/08/2020

Kappa-Casein BB | Beta-Casein A2A2

DMS 246,126 | EFI 11.1%

Haplotypes HH1F HH2F HH3F HH4F HH5F HCDF HH6F HMWO

Genetic Codes TC TD TE TL TP TR TV TY

Current Proof GBR-2024:12 | Genomic Young Sire

AHDB Dairy & Holstein UK 12/2024



### CONFORMATION based on 0 dtrs/0 hrd (67% Rel)

	-2	-1	0	1	2		
Type Merit						+0.47	
Mammary						+2.17	
Legs & Feet						+0.96	
Stature						+3.84	Tall
Chest Width						+1.05	Wide
Body Depth						+2.07	Deep
Angularity						+1.74	Open Rib
Rump Angle						-1.41	High Pins
Thurl Width						+3.27	Wide
R.Legs S View						-1.46	Straight
Foot Angle						+1.78	Steep
Locomotion						+0.74	Excellent
F.Udder Att.						+2.39	Tight
R.Udder Ht						+2.12	Very High
Udder Cleft						+2.31	Strong
Udder Depth						+2.33	Above Hock
F.Teats Place						+1.20	Close
R.Teats Place						+1.75	Close
Teat Length						-0.20	Short
Teat Sideview						+0.44	Close

PLI **188** Rel 75%

### PRODUCTION

Milk	+668 kgs	83 % Rel
Protein	+19.6 kgs	-0.03%
Fat	+12.0 kgs	-0.17%

### HEALTH & MANAGEMENT

Lifespan	27	Ease of Milk	1.69	
Fertility	-2.0	Temperament	0.37	
SCC	-2	Maintenance	39	
MAST	-1	Dairy Carcass	-0.8	
Calf Survival	+0.9	Digital Dermatitis	+0.3	
Lameness Advantage	+0.4	Gestation Length	-2 94% Rel	
TB Advantage	2.8	45% Rel	Feed Advantage	-164 52% Rel
Healthy Cow	+54	60% Rel	Enviro Cow	+0.4 77% Rel

### CALVING TRAITS

Direct CE	-1.4	72% Rel	Maternal CE	0.6	55% Rel
-----------	------	---------	-------------	-----	---------

# DAUGHTER PROVEN SIRES



## AltaINDIGO

65003147839890 | HO5843

PEAK ALTAINDIGO-ET  
IMAX X DRACO X SUPERSIRE  
HO840M003147839890 | DOB 11/21/2017

aAa 342 | DMS 345,135 | EFI 11.8 %  
Kappa-Casein: AE Beta-Casein: A1A2  
Genetic Codes: TC TD TE TL TP TR TV TY  
AHDB Dairy & Holstein UK 202412 - GENOMIC



PLI **+397** Rel 93%

### CONFORMATION (99 UK Daughters in 22 UK Herds) (417 D | 115 H 94%R US)

	-2	-1	0	1	2		
Stature						+0.73	Tall
Chest Width						+1.05	Wide
Body Depth						+0.22	Deep
Angularity						+1.13	Open Rib
Rump Angle						+0.37	Low Pins
Thurl Width						+1.00	Wide
R. Legs-S View						-0.07	Straight
Foot Angle						+0.29	Steep
Locomotion						+0.43	Excellent
F. Udder Att.						+0.24	Tight
R. Udder Ht.						+1.17	Very high
Udder Cleft						+0.24	Strong
Udder Depth						+0.36	Above hock
F. Teat Place						+0.06	Close
R. Teat Place						-0.06	Apart
Teat Length						+1.00	Long
Teat Sideview						+0.55	Apart

### CONFORMATION

Type Merit	1.10	Mammary	0.91
Legs & Feet	0.66	Rel	89%

### PRODUCTION (419 UK Daughters in 72 UK Herds)(2295D | 445H 22% US)

Milk	+490 Kgs	+99% Rel
Protein	+22.8 Kgs	+0.07%
Fat	+26.4 Kgs	+0.07%

### HEALTH & MANAGEMENT

Lifespan	34	Ease of Milk	+1.64
Fertility	-1.2	Temperament	+0.2
SCC	0	Maintenance	11
MAST	+1	Dairy Carcass	2.1
Calf Survival	+2.1	TB Advantage	4.0 85%
Lameness Advantage	+0.3	Gestation Length	-2 99%
Digital Dermatitis	+0.1	Feed Advantage	-25 61%
Healthy Cow	+39 85%	Enviro Cow	+1.8 97%

### CALVING TRAITS

Direct CE	-0.6	+90% Rel	Maternal CE	0.5	+59% Rel
-----------	------	----------	-------------	-----	----------

Alta UK abide by the ADHB & Holstein UK established code of Advertising. Bulls tested free for genetic recessives will not show these codes for formatting reasons. Prices are subject to change. Terms and conditions apply. Proud to use independent data powered by AHDB Dairy.



# Improve Conception Rates

with Alta CONCEPT PLUS high fertility sires



**2-5%**

**CONVENTIONAL DAIRY**  
conception rate advantage  
with CONCEPT PLUS

**DxD sires**



**3-7%**

**SEXED SEMEN**  
conception rate advantage  
with CONCEPT PLUS

**511 sires**



**2-4%**

**BEEF X DAIRY**  
conception rate advantage  
with CONCEPT PLUS

**BxD sires**

# DAUGHTER PROVEN SIRES



PLI **+564** Rel 87%

## AltaWHEELHOUSE

65003209641362 | HO6603

PEAK WHEELHOUSE-ET  
PURSUIT X DUKE X RUBICON  
HO840M003209641362 | DOB 9/2/2019

aAa 423 | DMS 135,345 | EFI 12.0 %  
Kappa-Casein: AB Beta-Casein: A2A2  
Haplotype: HMW1 | Genetic Codes: MW TC TD TL TP TR TV TY  
AHDB Dairy & Holstein UK 202412 - GENOMIC



### CONFORMATION

Type Merit	0.17	Mammary	0.82
Legs & Feet	-0.17	Rel	79%

### PRODUCTION (85 UK Daughters in 14 UK Herds) (3572D | 437H 62% US)

Milk	+831 Kgs	+93% Rel
Protein	+27.6 Kgs	0.00%
Fat	+40.2 Kgs	+0.07%

### HEALTH & MANAGEMENT

Lifespan	82	Ease of Milk	
Fertility	+4.3	Temperament	+0.9
SCC	-9	Maintenance	10
MAST	0	Dairy Carcass	1.7
Calf Survival	-1.0	TB Advantage	1.7 52%
Lameness Advantage	+1.8	Gestation Length	-1 99%
Digital Dermatitis	-0.2	Feed Advantage	+10 59%
Healthy Cow	+102 76%	Enviro Cow	+2.7 89%

### CALVING TRAITS

Direct CE	0.1	+91% Rel	Maternal CE	1.8	+61% Rel
-----------	-----	----------	-------------	-----	----------

### CONFORMATION (0 UK Daughters in 0 UK Herds) (869 D | 176 H 99%R US)

	-2	-1	0	1	2		
Stature						+0.23	Tall
Chest Width						+1.57	Wide
Body Depth						+0.18	Deep
Angularity						+0.61	Open Rib
Rump Angle						+2.34	Low Pins
Thurl Width						+2.69	Wide
R. Legs-S View						+0.27	Sickled
Foot Angle						-0.85	Low
Locomotion						-0.06	Poor
F. Udder Att.						-0.40	Loose
R. Udder Ht.						+0.72	Very high
Udder Cleft						+0.19	Strong
Udder Depth						-0.25	Below Hock
F. Teat Place						+1.18	Close
R. Teat Place						+1.69	Close
Teat Length						-1.59	Short
Teat Sideview						+1.88	Apart



PLI **+690** Rel 73%

## AltaZEMINI

65003215425541 | HO7503

PEAK ALTAZEMINI-ET  
AltaZAZZLE X AltaLAWSON X FRAZZLED  
HO840M003215425541 | DOB 6/3/2020

aAa 324 | DMS 234,246 | EFI 11.8 %  
Kappa-Casein: BB Beta-Casein: A1A2  
Genetic Codes: TC TD TE TL TP TR TV TY  
AHDB Dairy & Holstein UK 202412 - GENOMIC



### CONFORMATION

Type Merit	0.28	Mammary	0.47
Legs & Feet	-0.07	Rel	58%

### PRODUCTION (0 UK Daughters in 0 UK Herds)

Milk	+768 Kgs	+83% Rel
Protein	+33.6 Kgs	+0.09%
Fat	+43.9 Kgs	+0.14%

### HEALTH & MANAGEMENT

Lifespan	64	Ease of Milk	+0.70
Fertility	-0.3	Temperament	+0.2
SCC	-19	Maintenance	2
MAST	-1	Dairy Carcass	1.1
Calf Survival	+1.0	TB Advantage	2.4 51%
Lameness Advantage	+2.2	Gestation Length	-4 96%
Digital Dermatitis	+0.2	Feed Advantage	+84 46%
Healthy Cow	+103 62%	Enviro Cow	+3.4 75%

### CALVING TRAITS

Direct CE	0.3	+75% Rel	Maternal CE	0.8	+58% Rel
-----------	-----	----------	-------------	-----	----------

### CONFORMATION (0 UK Daughters in 0 UK Herds)

	-2	-1	0	1	2		
Stature						+0.26	Tall
Chest Width						+0.17	Wide
Body Depth						-0.12	Shallow
Angularity						+0.86	Open Rib
Rump Angle						-0.71	High Pins
Thurl Width						+1.07	Wide
R. Legs-S View						+0.75	Sickled
Foot Angle						-0.12	Low
Locomotion						+0.20	Excellent
F. Udder Att.						+0.90	Tight
R. Udder Ht.						+0.27	Very high
Udder Cleft						-0.89	Broken
Udder Depth						+0.10	Above hock
F. Teat Place						+0.31	Close
R. Teat Place						-0.66	Apart
Teat Length						-0.20	Short
Teat Sideview						-0.38	Close

Alta UK abide by the ADHB & Holstein UK established code of Advertising. Bulls tested free for genetic recessives will not show these codes for formatting reasons. Prices are subject to change. Terms and conditions apply. Proud to use independent data powered by AHDB Dairy.

# There are *TWO* Alta 4-EVENT COWS in the maternity pen!



During the FRESH event, the TWO 4-EVENT COWS include the cow that just freshened and her newborn heifer calf that is a future member of your milking herd.

## HOW DO WE HELP BOTH THE COW AND CALF BECOME ALTA 4-EVENT COWS?



### FOR YOUR FRESH COW

#### Rumilife CAL24 calcium supplement

- ◆ Uniquely formulated calcium bolus
- ◆ Contains Vitamin D & Magnesium
- ◆ Sustained 24 hour calcium release
- ◆ 100gm Calcium application
- ◆ 2 boluses with 1 application



### FOR YOUR NEWBORN CALF

#### Calf's Choice Total 100

- ◆ Whole Bovine Colostrum
- ◆ Safe & Effective
- ◆ High in colostrum fat
- ◆ Convenient
- ◆ GMP+ FSA Assured

Talk to your trusted Alta advisor and help them both become Alta 4-EVENT COWS!

## Alta Ltd

1c Leachfield Industrial Estate  
Garstang, Preston PR3 1PR | Tel: 01995 600196  
info@altagenetics.com | uk.altagenetics.com

